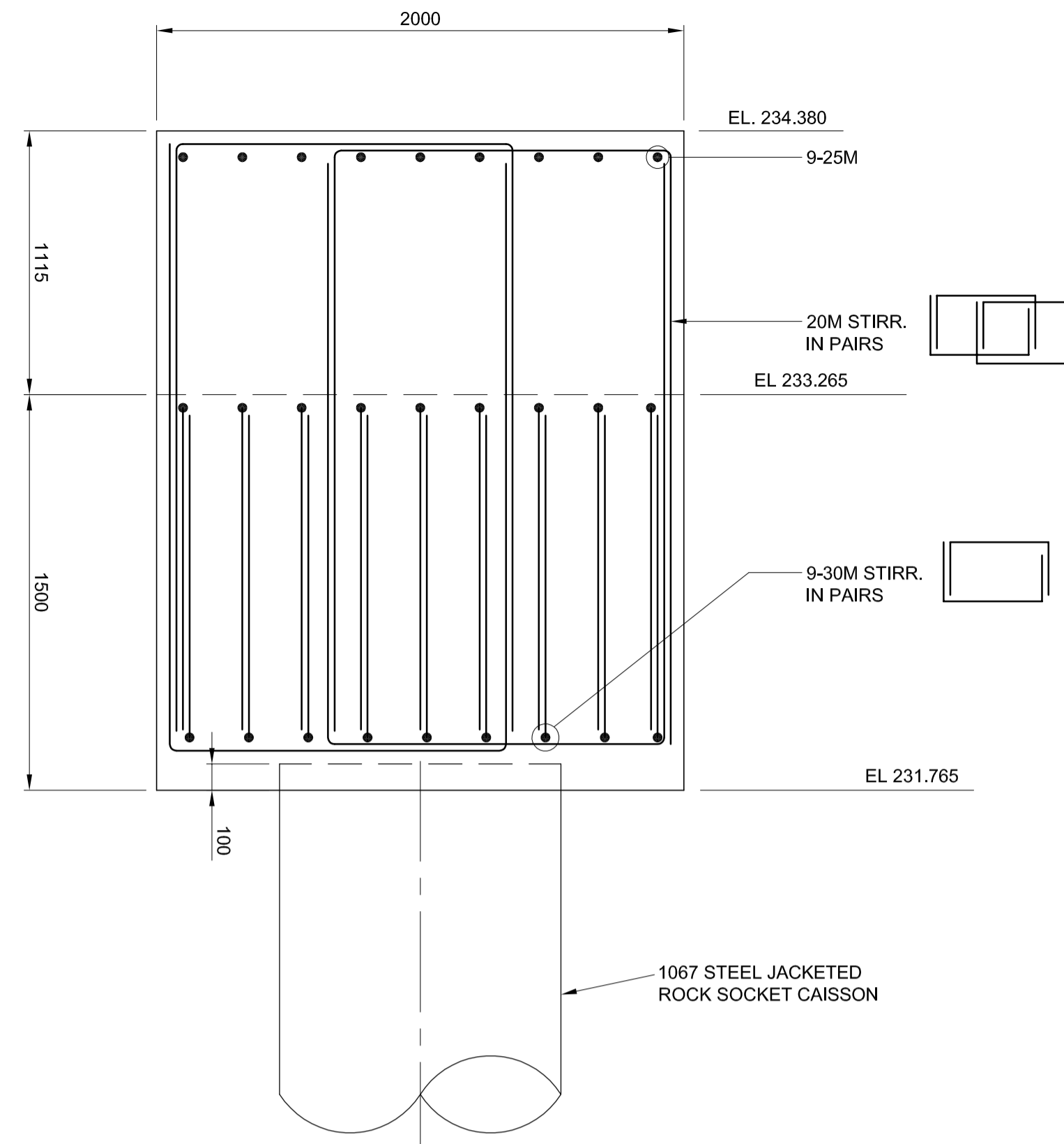
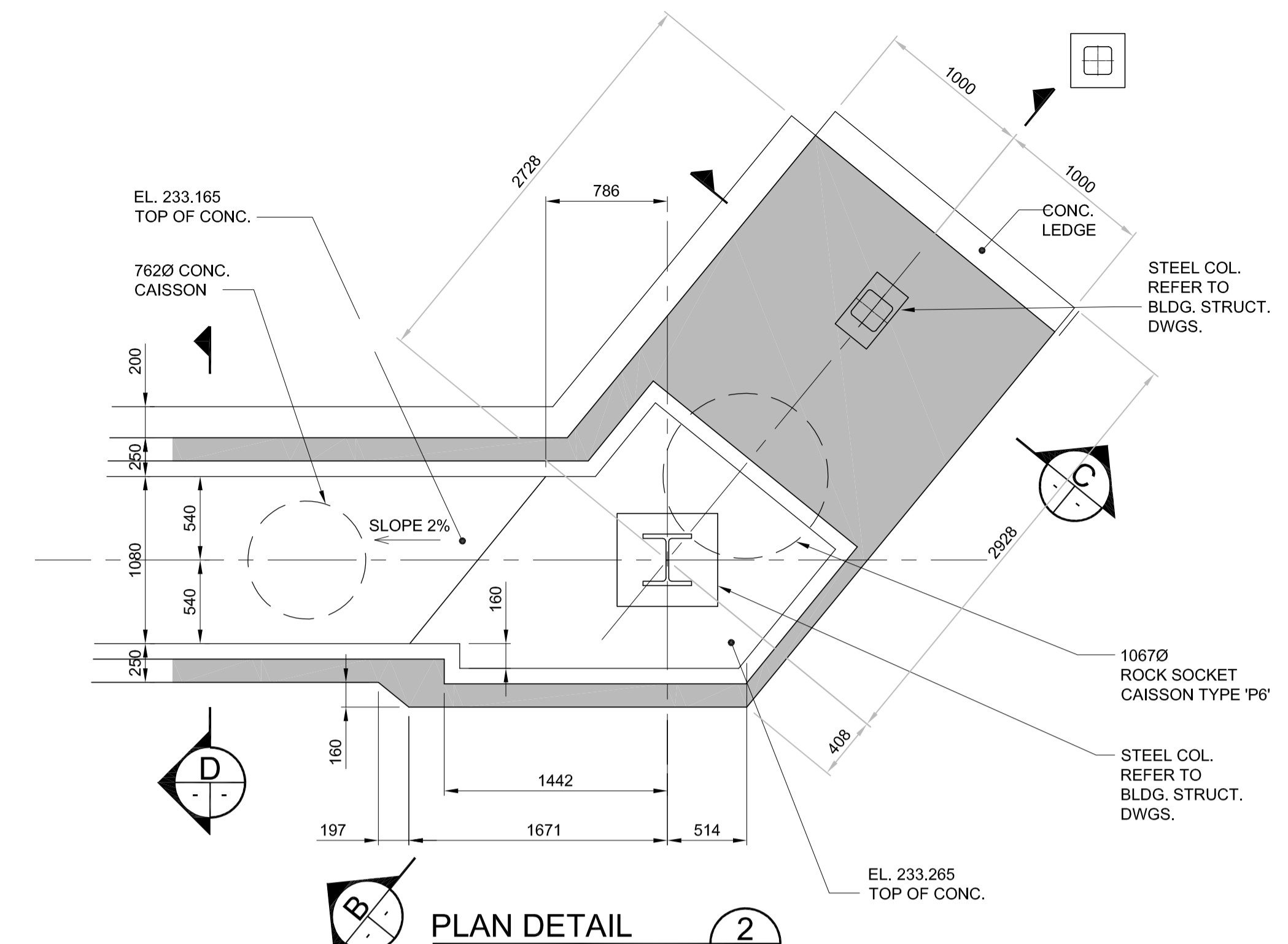


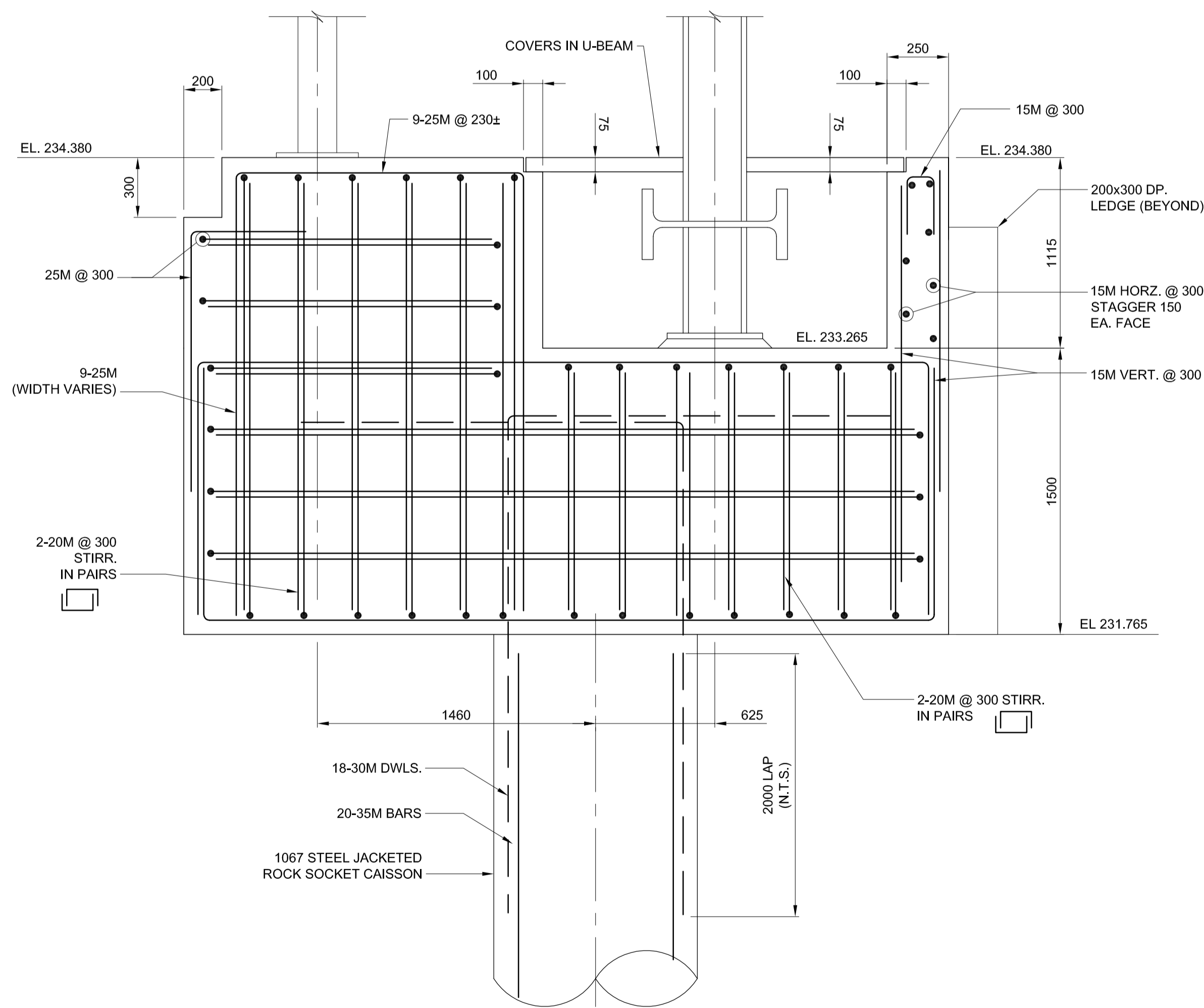
PLAN DETAIL 1
SCALE 1:30



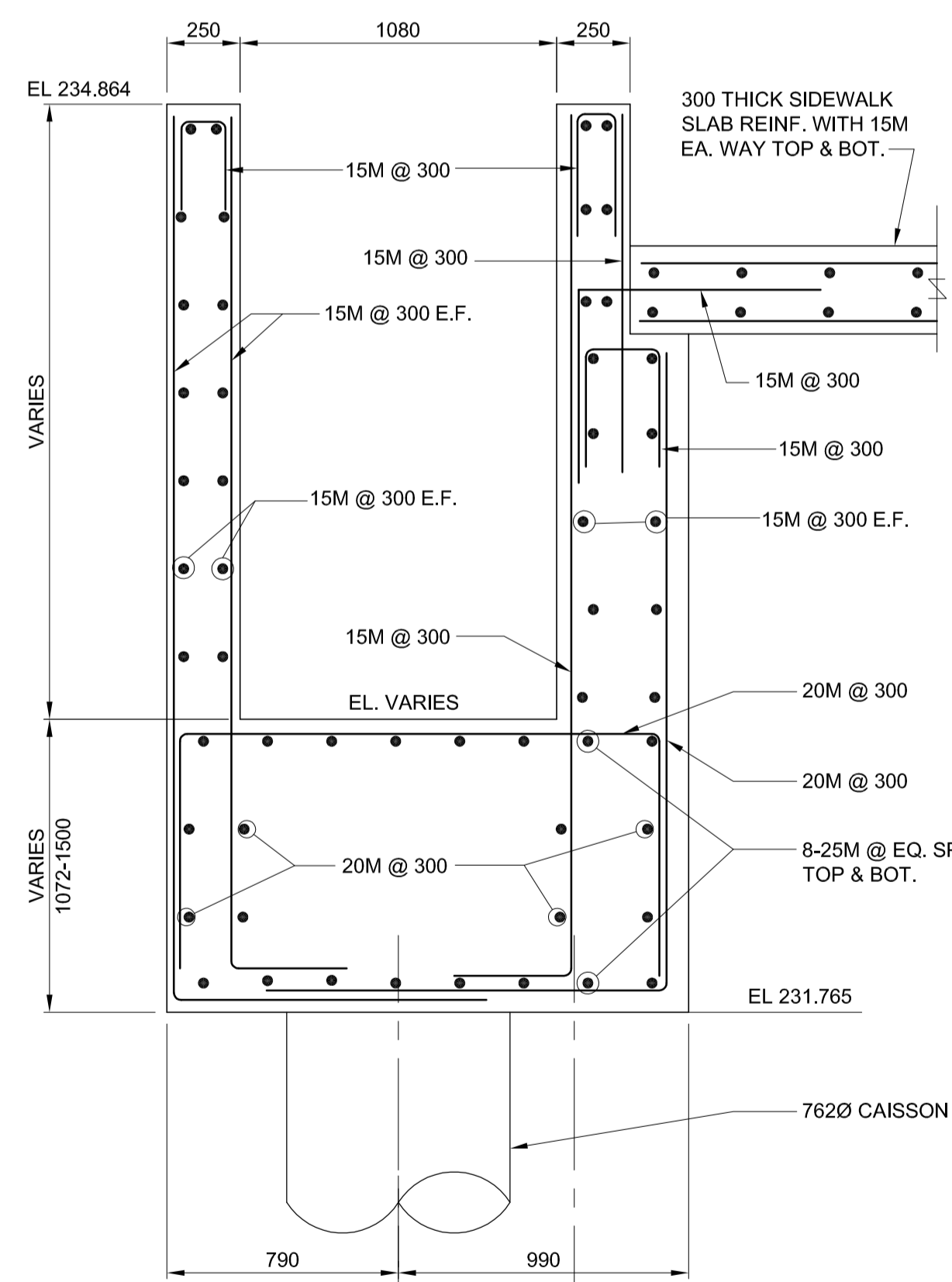
SECTION C
SCALE 1:20



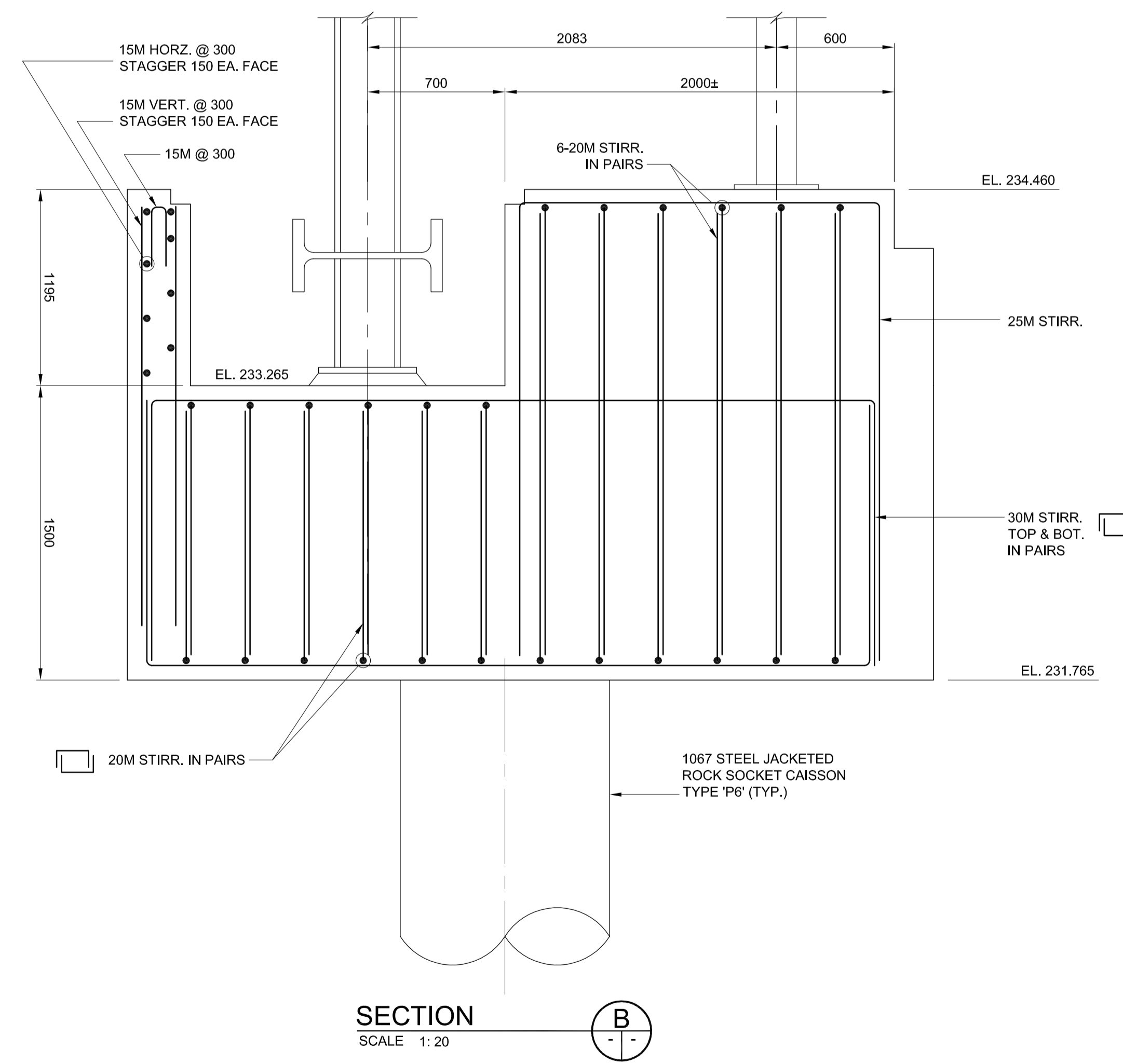
PLAN DETAIL 2
SCALE 1:30



SECTION A
SCALE 1:20



SECTION D
SCALE 1:20



SECTION B
SCALE 1:20

G:\CAD\088813\Contract\Contract 5-Osborne Station\Current\Bridges\C5-S1143- EAST STATION SECTION 3 OF 4.dwg

LOCATION UNDERGROUND APPROVED STRUCTURES SUPPLY U/G STRUCTURES COMMITTEE DATE	B.M. ELEV. 654265 (633392.694, 5525026.192) 232.518	DESIGNED BY FAK DRAWN BY NBG CHECKED BY SSR APPROVED BY DPK		ENGINEER'S SEAL PROVINCE OF MANITOBA ORIGINAL STAMPED BY S.S. RIHAL 2010/05/14 REGISTERED PROFESSIONAL ENGINEER		THE CITY OF WINNIPEG TRANSIT DEPARTMENT SOUTHWEST RAPID TRANSIT CORRIDOR - STAGE 1 OSBORNE STATION & ASSOCIATED WORKS	CITY DRAWING NUMBER B237-10- 59 SHEET OF 59 OF 121
NOTE: LOCATION OF UNDERGROUND STRUCTURES AS SHOWN ARE BASED ON THE BEST INFORMATION AVAILABLE BUT NO GUARANTEE IS GIVEN THAT ALL EXISTING UTILITIES ARE SHOWN OR THAT THE GIVEN LOCATIONS ARE EXACT. CONFIRMATION OF EXISTENCE AND EXACT LOCATION OF ALL SERVICES MUST BE OBTAINED FROM THE INDIVIDUAL UTILITIES BEFORE PROCEEDING WITH CONSTRUCTION.	2 ISSUED FOR ADDENDUM #2 10/06/11 DPK 1 ISSUED FOR TENDER 10/05/14 DPK	HOR. SCALE VERTICAL DATE 2010/05/14	RELEASED FOR CONSTRUCTION ORIGINAL SIGNED BY RANDY FINGAS DATE 2010/05/14	CONSULTANT PROJECT NO. 088813	EAST END RETAINING WALLS - SECTIONS & DETAILS 3 OF 4	CONSULTANT DRAWING NUMBER C5-S1144-T	

