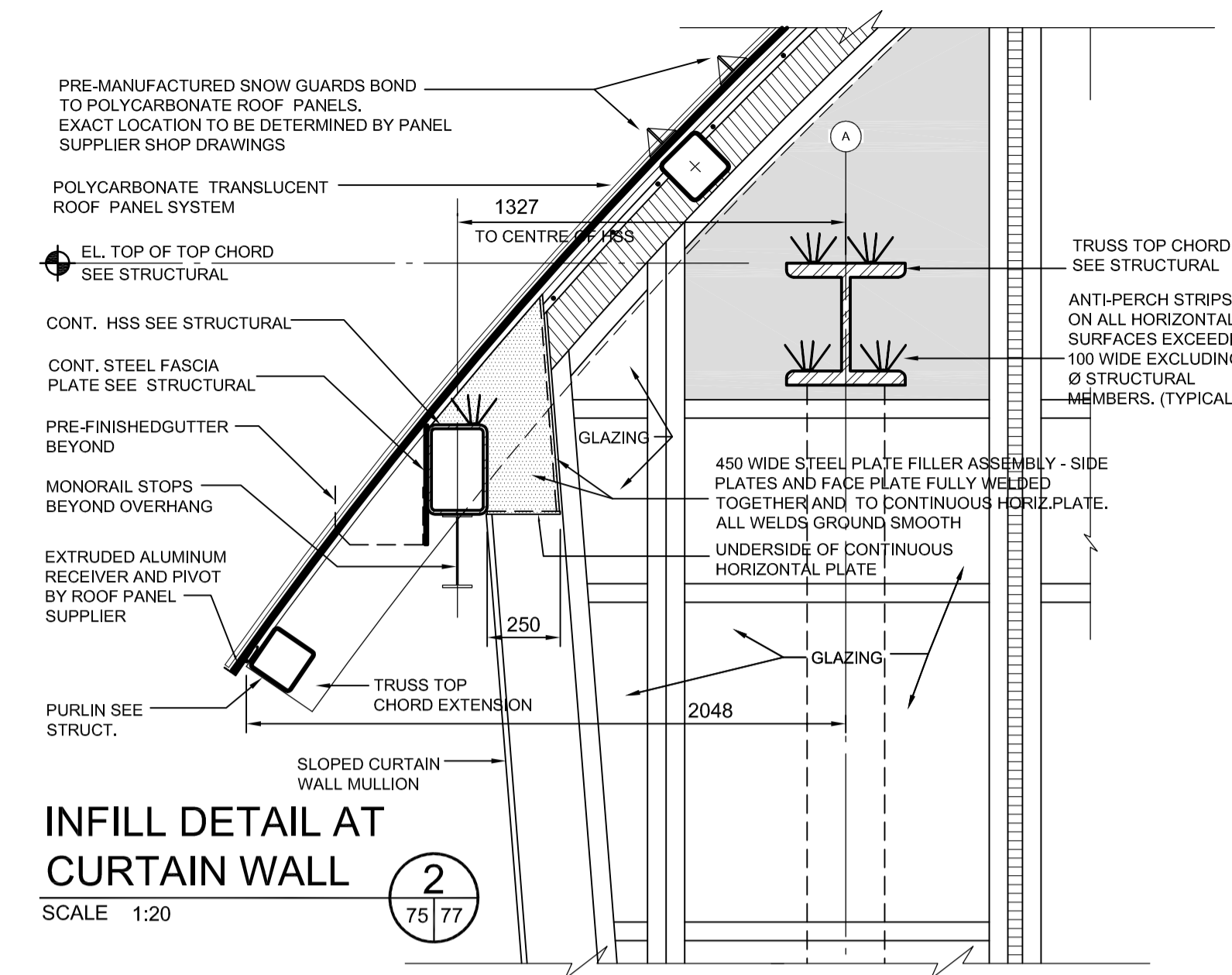
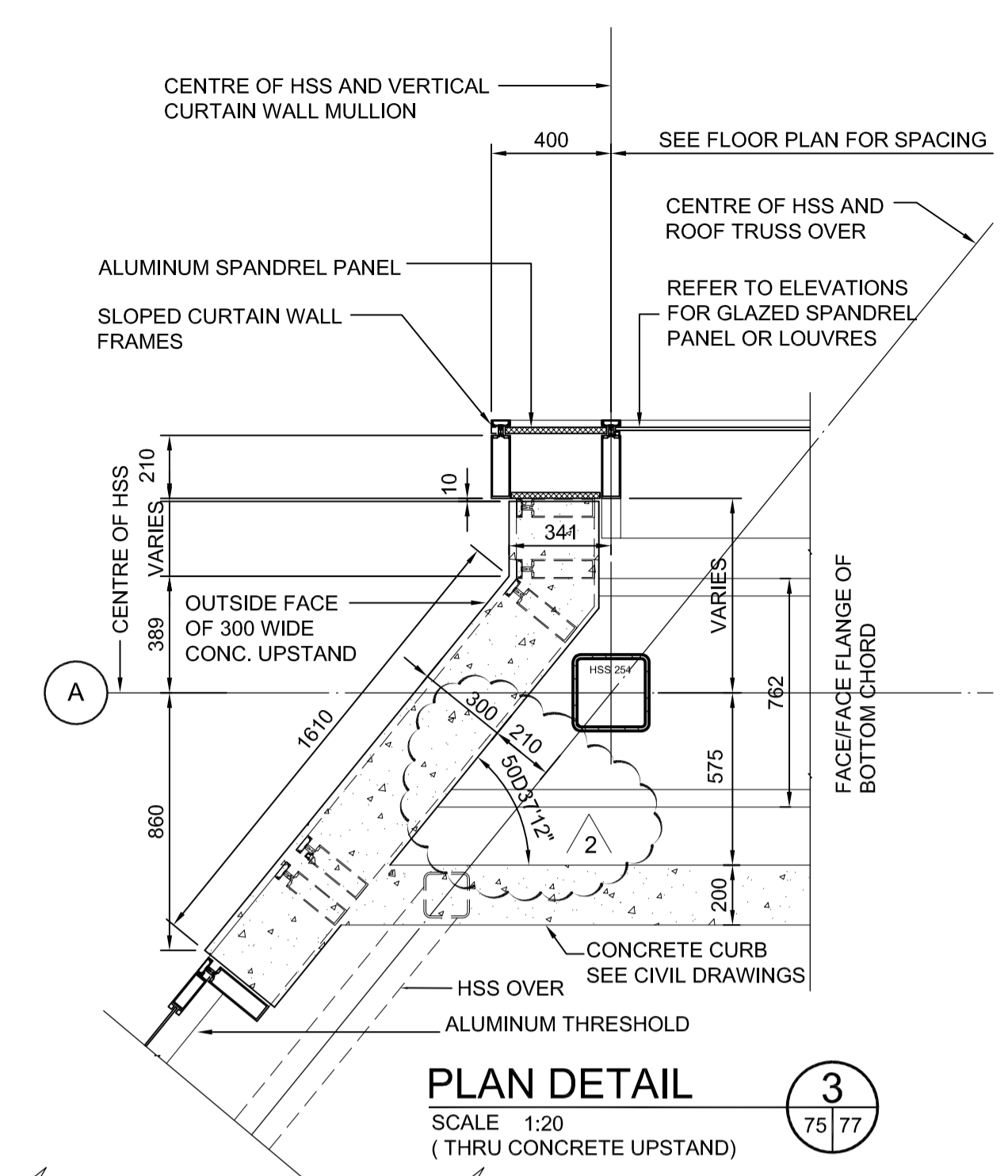


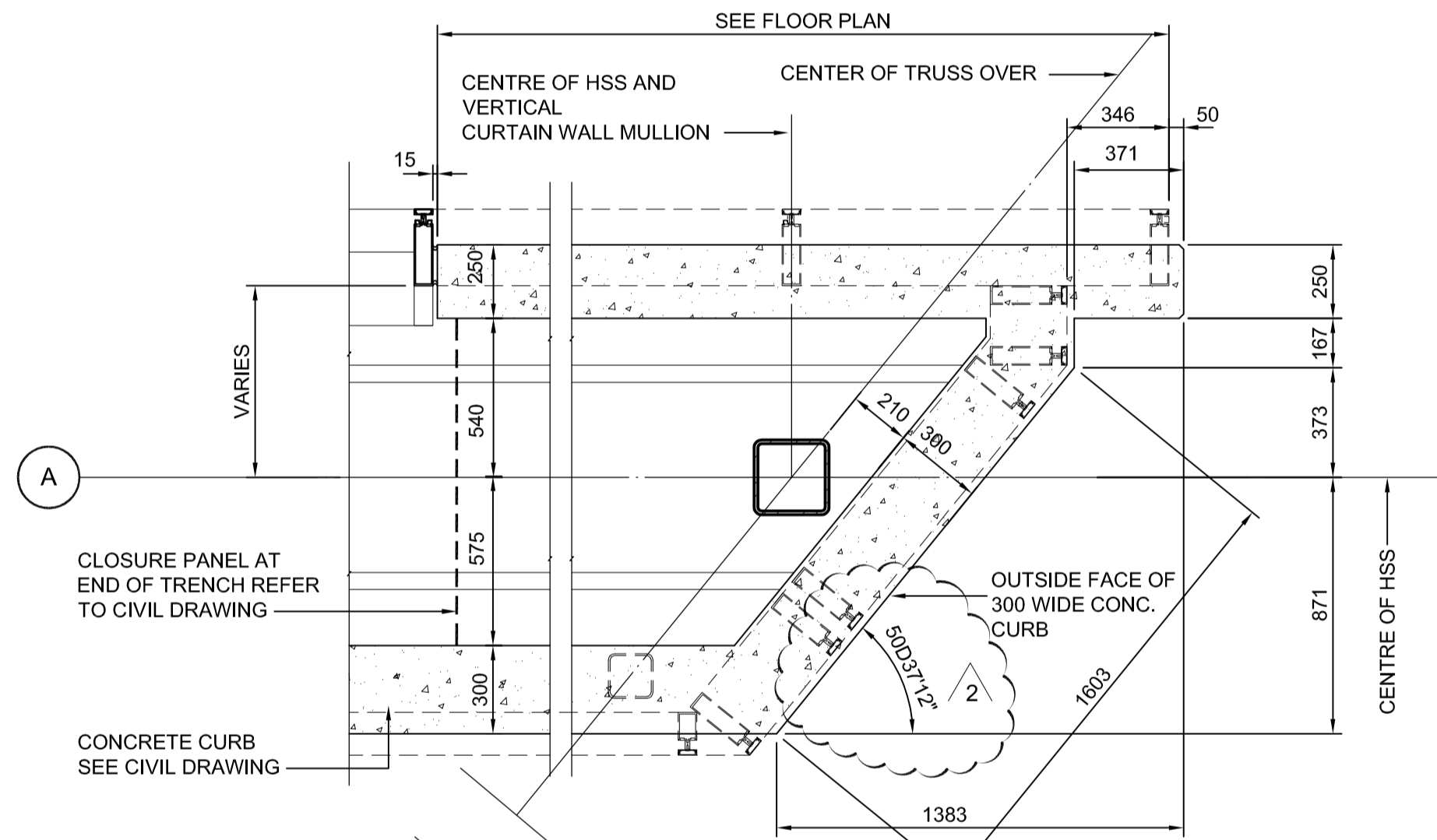
INFILL DETAIL AT CURTAIN WALL
SCALE 1:20



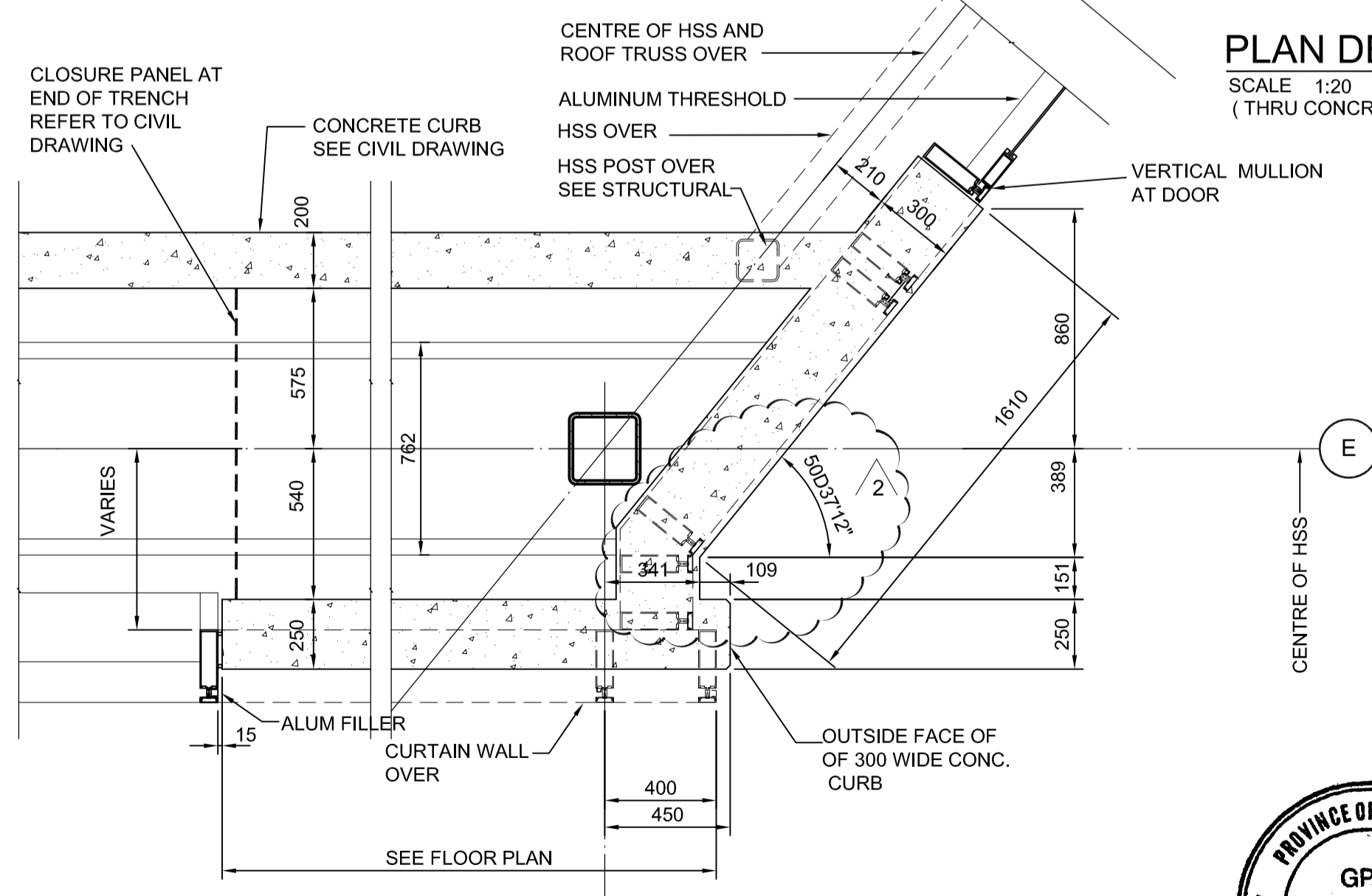
INFILL DETAIL AT CURTAIN WALL
SCALE 1:20



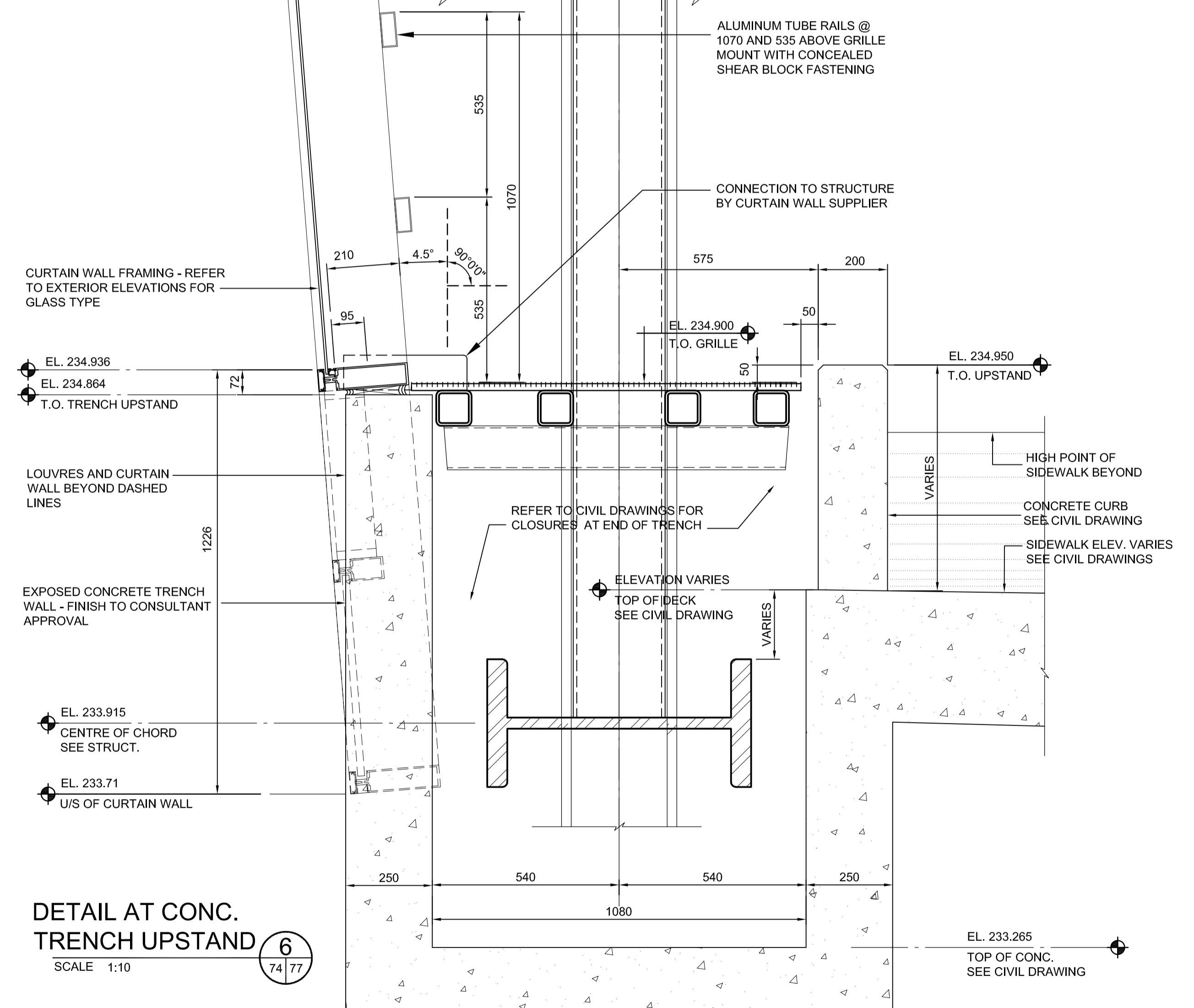
PLAN DETAIL
SCALE 1:20
(THRU CONCRETE UPSTAND)



PLAN DETAIL
SCALE 1:20
(THRU CONCRETE UPSTAND)



PLAN DETAIL
SCALE 1:20
(THRU CONCRETE UPSTAND)



DETAIL AT CONC. TRENCH UPSTAND
SCALE 1:10



LOCATION UNDERGROUND	APPROVED STRUCTURES	B.M. ELEV.	DESIGNED BY	gpparchitecture			THE CITY OF WINNIPEG TRANSIT DEPARTMENT Winnipeg	SOUTHWEST RAPID TRANSIT CORRIDOR - STAGE 1 OSBORNE STATION & ASSOCIATED WORKS SECTIONS AND MISC. DETAILS	CITY DRAWING NUMBER B237-10-77 SHEET 77 OF 121 CONSULTANT DRAWING NUMBER C5-A2006-T
SUPPLY U/G STRUCTURES COMMITTEE	DATE		DRAWN BY	dk DG					
NOTE:			CHECKED BY						
LOCATION OF UNDERGROUND STRUCTURES AS SHOWN ARE BASED ON THE BEST INFORMATION AVAILABLE BUT NO GUARANTEE IS GIVEN THAT ALL EXISTING UTILITIES ARE SHOWN OR THAT THE GIVEN LOCATIONS ARE EXACT. CONFIRMATION OF EXISTENCE AND EXACT LOCATION OF ALL SERVICES MUST BE OBTAINED FROM THE INDIVIDUAL UTILITIES BEFORE PROCEEDING WITH CONSTRUCTION.			APPROVED BY						
2	ISSUED FOR ADDENDUM #2	10/06/11	HOR. SCALE	as noted					
1	ISSUED FOR TENDER	10/05/14	VERTICAL						
NO.	REVISIONS	DATE	BY	DATE	2010/05/04				

H:\2009\09193 Osborne BR Station\Wd\C5-A2006-T-Sections and Misc. details.dwg