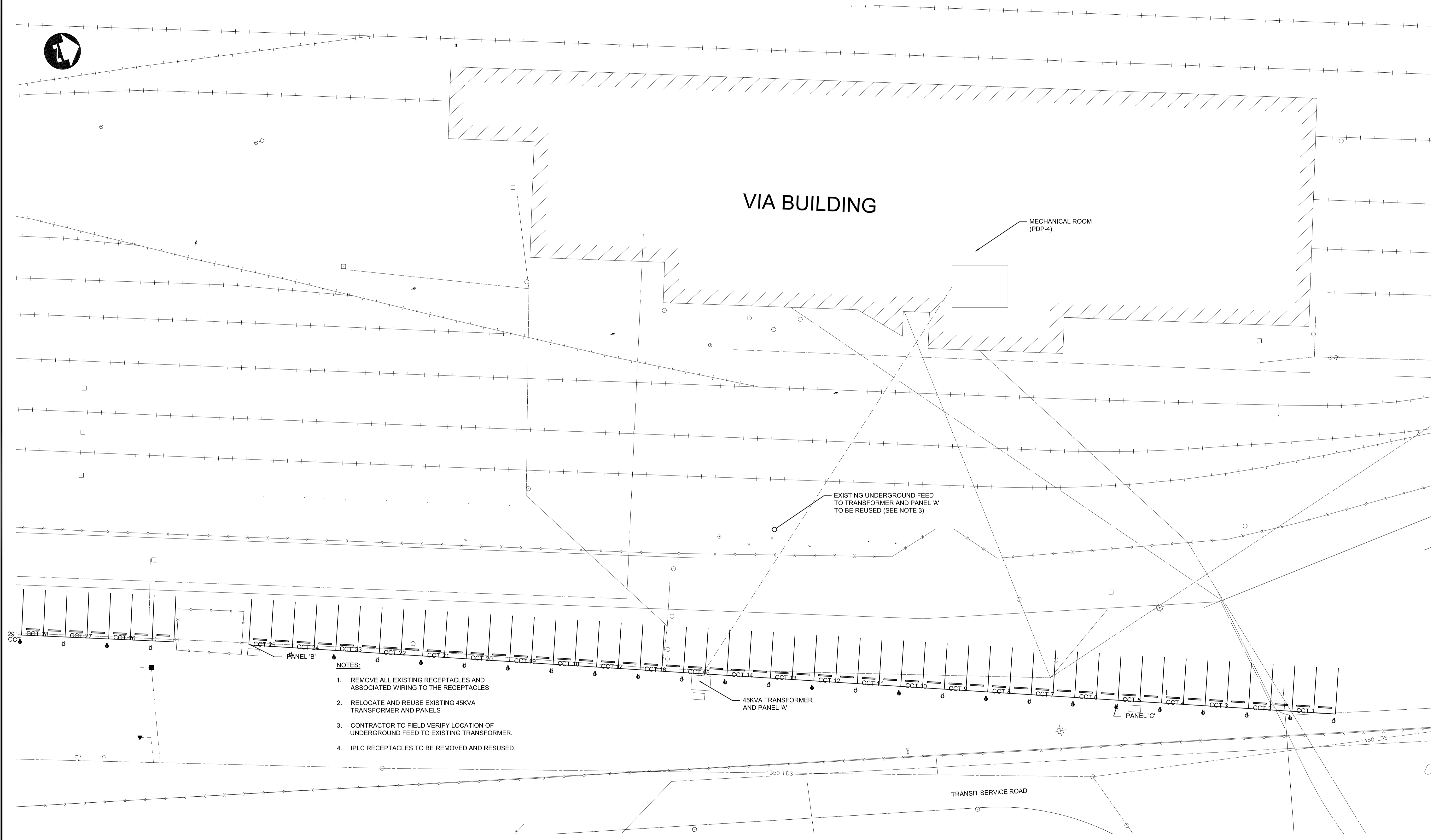


TRANSITWAY



- NOTES:**
1. REMOVE ALL EXISTING RECEPTACLES AND ASSOCIATED WIRING TO THE RECEPTACLES
  2. RELOCATE AND REUSE EXISTING 45KVA TRANSFORMER AND PANELS
  3. CONTRACTOR TO FIELD VERIFY LOCATION OF UNDERGROUND FEED TO EXISTING TRANSFORMER.
  4. IPLC RECEPTACLES TO BE REMOVED AND RESUSED.



<b>LOCATION UNDERGROUND STRUCTURES</b> SUPPLY, U/G STRUCTURES COMMITTEE DATE	<b>APPROVED STRUCTURES</b> DATE	B.M. ELEV.	DESIGNED BY: ML DRAWN BY: JV CHECKED BY: ORIGINAL SIGNED BY AA APPROVED BY: ORIGINAL SIGNED BY W.C.D. HOR. SCALE: VERTICAL		ENGINEER'S SEAL PROVINCE OF MANITOBA ORIGINAL STAMPED BY W.C.D. DEGAGNE 04/23/10 REGISTERED PROFESSIONAL ENGINEER	<b>THE CITY OF WINNIPEG</b> TRANSIT DEPARTMENT	SOUTHWEST RAPID TRANSIT CORRIDOR - STAGE 1 TRANSITWAY CONSTRUCTION, LANDSCAPING & ASSOCIATED WORKS	CITY DRAWING NUMBER: P-3317-74 SHEET OF: 74 OF 84
NOTE: LOCATION OF UNDERGROUND STRUCTURES AS SHOWN ARE BASED ON THE BEST INFORMATION AVAILABLE, BUT NO GUARANTEE IS GIVEN THAT ALL EXISTING UTILITIES ARE SHOWN OR THAT THE GIVEN LOCATIONS ARE EXACT. CONFIRMATION OF EXISTENCE AND EXACT LOCATION OF ALL SERVICES MUST BE OBTAINED FROM THE INDIVIDUAL UTILITIES BEFORE PROCEEDING WITH CONSTRUCTION.			1 ADDENDUM #2 04/23/10 MCL NO. REVISIONS DATE BY	RELEASED FOR CONSTRUCTION ORIGINAL SIGNED BY RANDY FINGAS DATE: 04/23/10	CONSULTANT PROJECT NO. 088813	ELECTRICIAL - VIA RAIL STATION PARKING LOT DEMOLITION	CONSULTANT DRAWING NUMBER: C6-C3053-T	

G:\CAD\088813\Contract\Contract 6-Busway\Current\Electrical\Via Parking LOT\E2-E3.dwg