

NOTE: CHAINAGES SHOWN ARE ALONG E OF BERRY ST

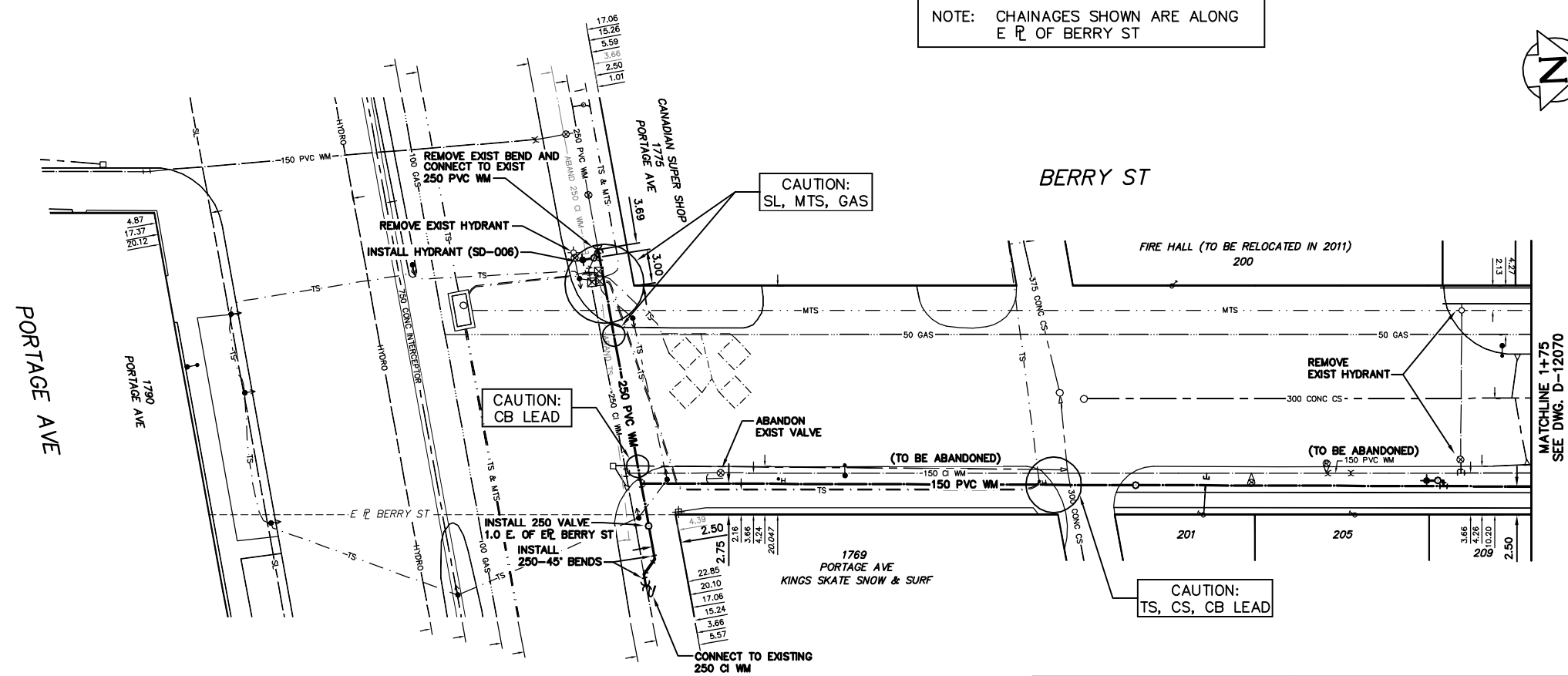
WATER SERVICE INFORMATION

ADDRESS	SIZE(mm) & TYPE (STREET)	SIZE(mm) & TYPE (PROP)	SHORT & LONG MEASUREMENT	CORP. LOCATION	REMARKS
200 BERRY ST	-	-	8 N OF S SIDE BLDG	-	-
RESIDENTIAL	-	-	7.62 FROM HYD	-	-
201 BERRY ST	20	20	3.61 S/NHL	0.3 N S/C	-
RESIDENTIAL	COPPER	COPPER	-	-	-
205 BERRY ST	-	20	IN LINE S/S FRONT STEP	-	-
RESIDENTIAL	-	COPPER	4.57 L/R HOUSE LINE	-	-
209 BERRY ST	-	-	1.83 S OF NL BLDG	-	-
RESIDENTIAL	-	-	12.19 FROM HYD	-	-
1769 PORTAGE AV	25	25	7.18 E OF W SIDE	-	-
COMMERCIAL	COPPER	COPPER	-	-	-
1775 PORTAGE AV	12	-	1.68 W OF E BLDG IN PVENT	-	-
COMMERCIAL	COPPER	-	-	-	-

\*SERVICES TO BE RENEWED TO R. ALL OTHERS TO BE RECONNECTED

CONSTRUCTION NOTES

1. EXPOSE EXISTING WATERMAIN & CONFIRM INVERTS PRIOR TO CONSTRUCTION.
2. LOCATION OF ALL SERVICES TO BE CONFIRMED IN THE FIELD.
3. INSTALL WATERMAIN BY TRENCHLESS METHODS.
4. TRENCHES AND EXCAVATIONS WITHIN 1 METRE OF A PAVED AREA INCLUDING SIDEWALKS SHALL BE CLASS 3 BACKFILL.
5. ALL MATERIALS SHALL CONFORM TO THE CITY OF WINNIPEG STANDARD CONSTRUCTION SPECIFICATIONS.
6. MINIMUM COVER TO TOP OF WATERMAIN SHALL BE 2.4 m.
7. REPLACE ALL EXISTING LEAD SERVICES FROM PROPOSED WATERMAIN TO R.
8. NOTIFY ALL AFFECTED RESIDENTS AND BUSINESSES 24 HOURS IN ADVANCE OF ANY WATER SHUTDOWNS OR DISRUPTION OF SERVICE.



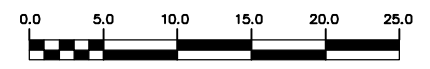
METRIC

WHOLE NUMBERS INDICATE MILLIMETRES  
DECIMALIZED NUMBERS INDICATE METRES

NOTE: ALL VALVES TO BE INSTALLED COUNTERCLOCKWISE TO CLOSE

WARNING

IF POWER EQUIPMENT OR EXPLOSIVES ARE TO BE USED FOR EXCAVATION ON THIS PROJECT THE CONTRACTOR MUST:  
1) NOTIFY THE GAS COMPANY OF THE PROPOSED LOCATION OF EXCAVATION.  
2) TAKE PRECAUTION TO AVOID DAMAGE TO GAS COMPANY INSTALLATIONS.  
SEE PROVINCIAL REGULATION 210/72 FOR DETAILS



EXISTING	LEGEND-PLAN	PROPOSED	EXISTING	LEGEND-PLAN	PROPOSED	EXISTING	LEGEND-PROFILE	PROPOSED
200 WM	WATERMAIN	200 WM	SL, HYDRO	SL, HYDRO	150 WM	WATERMAIN	150 WM	WATERMAIN
+	HYDRANT	+	MTS	MTS	+	HYDRANT	+	HYDRANT
o	VALVE	o	TRAFFIC SIGNALS	TRAFFIC SIGNALS	+	VALVE	+	VALVE
525 LDS	LAND DRAINAGE SEWER	525 LDS	50 GAS	50 GAS	300 LDS	LAND DRAINAGE SEWER	300 LDS	LAND DRAINAGE SEWER
375 WWS	WASTEWATER SEWER	375 WWS	SURVEY BAR	SURVEY BAR	250 WWS	WASTEWATER SEWER	250 WWS	WASTEWATER SEWER
o	MANHOLE	o	FENCE	FENCE	o	PROFILE	o	PROFILE
□	CATCH BASIN	□	POLE - HYDRO, MTS	POLE - HYDRO, MTS	—	GROUND ABOVE PIPE	—	GROUND ABOVE PIPE
▽	CURB INLET	▽	CURB STOP	CURB STOP	—	☉ DITCH (NORTH & WEST)	—	☉ DITCH (NORTH & WEST)
▽	REDUCER	▽	GUY ANCHOR	GUY ANCHOR	—	☉ DITCH (SOUTH & EAST)	—	☉ DITCH (SOUTH & EAST)
X	COUPLER	X	LIGHT STANDARD	LIGHT STANDARD	—	☉ GUTTER (NORTH & WEST)	—	☉ GUTTER (NORTH & WEST)
o	ANODE	o	TREE	TREE	—	☉ GUTTER (SOUTH & EAST)	—	☉ GUTTER (SOUTH & EAST)

LOCATION APPROVED	B.M. ELEV.	FIELD BOOK #:
UNDERGROUND STRUCTURES	POSTED TO LBS	
SUPV. U/G STRUCTURES COMMITTEE	DATE	
NOTE:		
LOCATION OF UNDERGROUND STRUCTURES AS SHOWN ARE BASED ON THE BEST INFORMATION AVAILABLE BUT NO GUARANTEE IS GIVEN THAT ALL EXISTING UTILITIES ARE SHOWN OR THAT THE GIVEN LOCATIONS ARE EXACT. CONFIRMATION OF EXISTENCE AND EXACT LOCATION OF ALL SERVICES MUST BE OBTAINED FROM THE INDIVIDUAL UTILITIES BEFORE PROCEEDING WITH CONSTRUCTION.		
NO.	REVISIONS	DATE BY

CITY OF WINNIPEG  
WATER AND WASTE  
ENGINEERING DIVISION

DESIGNED BY: RC  
CHECKED BY: SC

DRAWN BY: KB/DVG  
APPROVED BY: KZ

HOR. SCALE: 1:250  
VERTICAL: 1:50

DATE: 2010 06 16

ENGINEER'S SEAL

ORIGINAL SIGNED BY S.R.J. COUNROYER 10/06/02

BID OPPORTUNITY 397-2010  
FILENAME: D-12069.dwg  
PLOT DATE: 2010 06 16

THE CITY OF WINNIPEG  
WATER AND WASTE DEPARTMENT

2010 WATERMAIN RENEWALS  
CONTRACT 6  
BERRY STREET  
PORTAGE AVENUE TO  
75 N OF PORTAGE AVENUE

SHEET 5 OF 9  
CITY DRAWING NUMBER  
D-12069