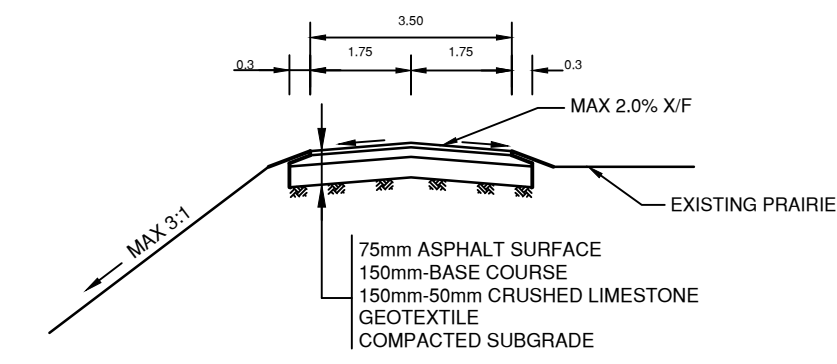


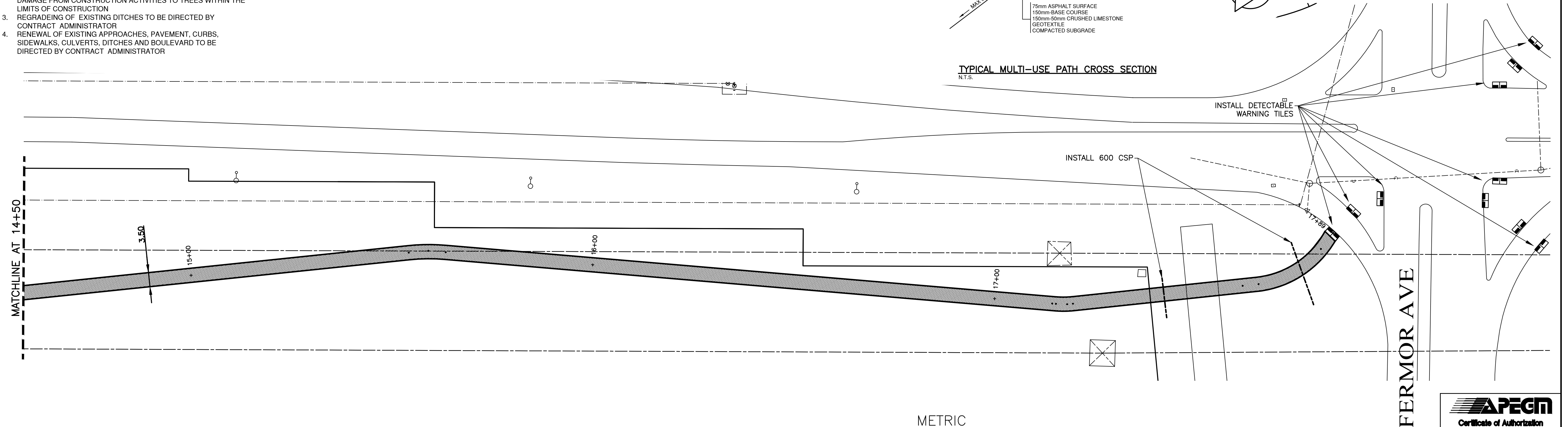
NOTES:

1. LOCATION OF PATHWAY, DITCHES, BOULEVARD, AND CULVERTS TO BE FINALIZED IN THE FIELD BY CONTRACT ADMINISTRATOR
2. TO BE FINALIZED IN THE FIELD BY CONTRACT ADMINISTRATOR CONTRACTOR TO TAKE PRECAUTIONARY STEPS TO AVOID DAMAGE FROM CONSTRUCTION ACTIVITIES TO TREES WITHIN THE LIMITS OF CONSTRUCTION
3. REGRADEING OF EXISTING DITCHES TO BE DIRECTED BY CONTRACT ADMINISTRATOR
4. RENEWAL OF EXISTING APPROACHES, PAVEMENT, CURBS, SIDEWALKS, CULVERTS, DITCHES AND BOULEVARD TO BE DIRECTED BY CONTRACT ADMINISTRATOR

CHAINAGE ALONG CENTER OF PATH
LAGIMODIERE BLVD



TYPICAL MULTI-USE PATH CROSS SECTION
N.T.S.



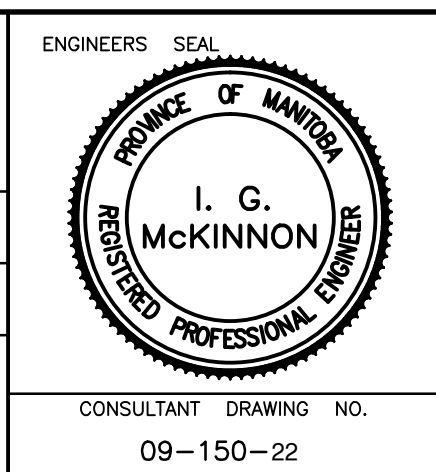
METRIC
WHOLE NUMBERS INDICATE MILLIMETRES
DECIMALIZED NUMBERS INDICATE METRES



	WATERMAIN		HYDRO		CENTER LINE
	HYDRANT		M.T.S.		NORTH GUTTER LINE
	VALVE		CONCRETE		SOUTH GUTTER LINE
	LAND DRAINAGE SEWER		ASPHALT		WATERMAIN
	WASTE WATER SEWER		PROPERTY LINE		VALVE
	MANHOLE		SURVEY BAR		LAND DRAINAGE SEWER
	CATCH BASIN		CURB STOP		WASTE WATER SEWER
	CURB INLET		C.B. LEAD		JUNCTIONS
	TRAFFIC SIGNAL		SIDEWALK		CULVERT
	STEAM HT.		SIDEWALK RAMP		ASPH./CONC. PAD
	GAS		ELEVATIONS		GARAGE PAD
	EXISTING		PROPOSED		EXISTING
	LEGEND - PLAN		LEGEND - PROFILE		PROPOSED

LOCATION APPROVED		SUPV. U/G STRUCTURES COMMITTEE		DATE
NOTE: LOCATION OF UNDERGROUND STRUCTURES AS SHOWN ARE BASED ON THE BEST INFORMATION AVAILABLE BUT NO GUARANTEE IS GIVEN THAT ALL EXISTING UTILITIES ARE SHOWN OR THAT THE GIVEN LOCATIONS ARE EXACT. CONFIRMATION OF EXISTENCE AND EXACT LOCATION OF ALL SERVICES MUST BE OBTAINED FROM THE INDIVIDUAL UTILITIES BEFORE PROCEEDING WITH CONSTRUCTION.				
NO.	REVISIONS	DATE	BY	

		ENGINEERS SEAL	
DESIGNED BY	MBS	CHECKED BY	SM
DRAWN BY	MBS	APPROVED BY	IMcK
HOR. SCALE:	1:500	RELEASED FOR CONSTRUCTION	
VERT. SCALE:	1:50	DATE	AUGUST 2010



THE CITY OF WINNIPEG
PUBLIC WORKS DEPARTMENT

2010 ACTIVE TRANSPORTATION INFRASTRUCTURE STIMULUS PROGRAM
LAGIMODIERE MULTI-USE PATH
FROM MATCHLINE AT STATION 14+50 TO FERMOR AVE

CITY DRAWING NO.	N/A
SHEET	13
TENDER NO.	544-2010