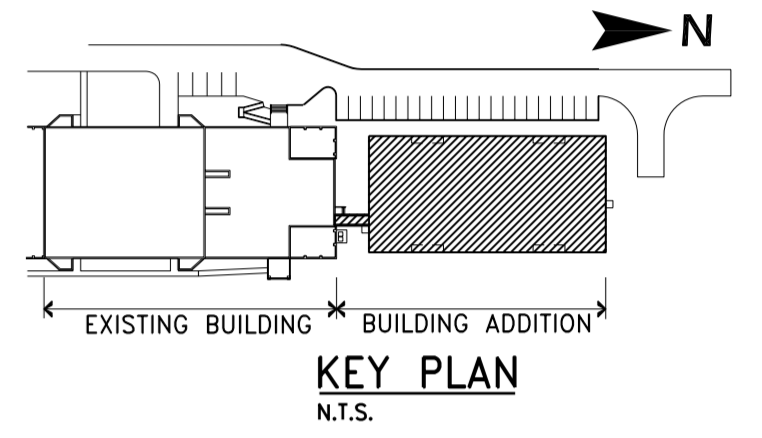
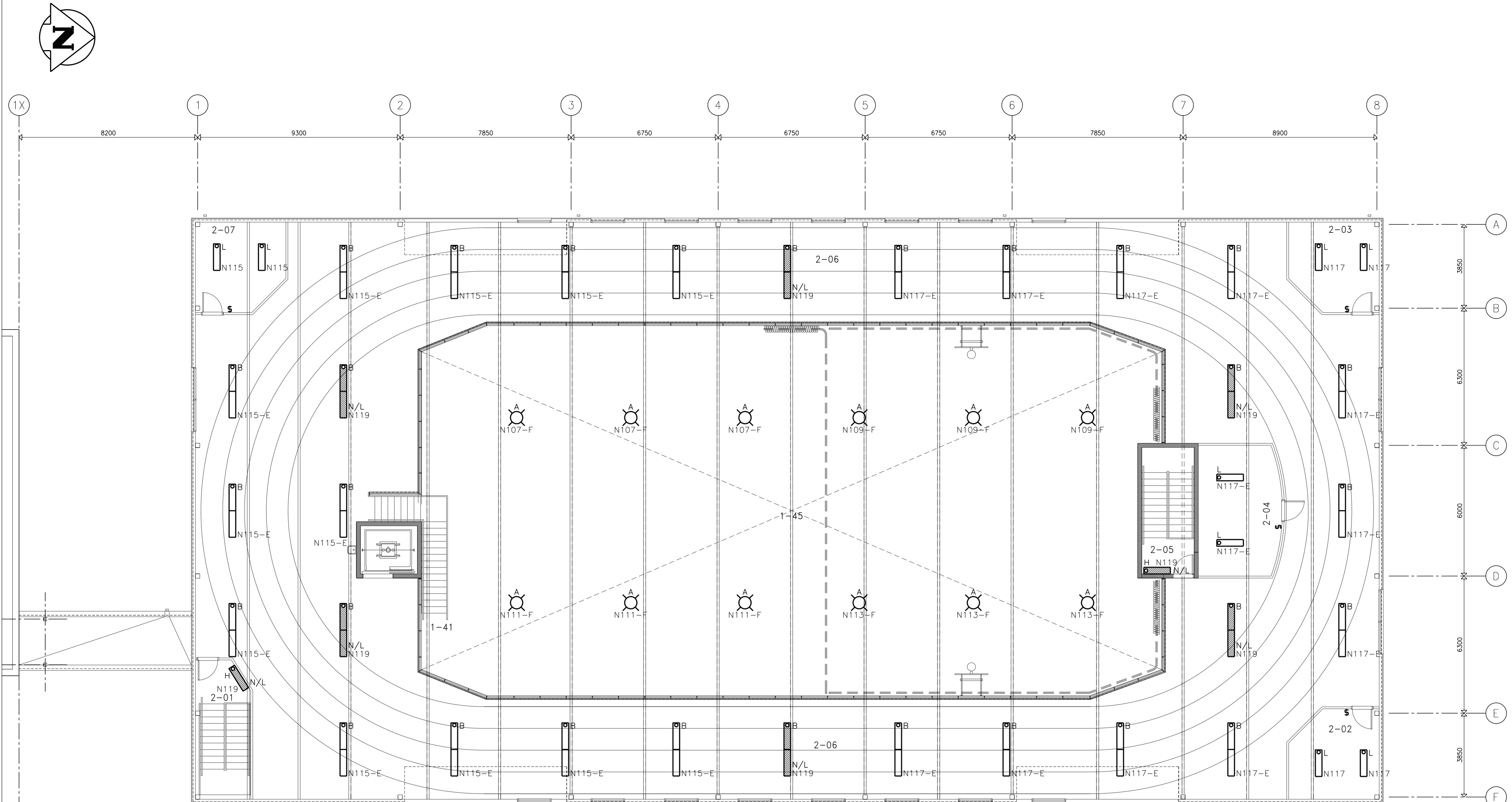


NOTES:

- REFER TO ARCHITECTURAL REFLECTED CEILING PLAN FOR EXACT LOCATION OF CEILING MOUNTED LUMINAIRES.



- THIS DRAWING MUST NOT BE SCALED.
- THE GENERAL CONTRACTOR SHALL VERIFY ALL DIMENSIONS, DATUMS, AND LEVELS PRIOR TO COMMENCEMENT OF WORK. ALL ERRORS AND OMISSIONS TO BE REPORTED TO WARDROP ENGINEERING INC. BEFORE PROCEEDING.
- VARIATIONS AND MODIFICATIONS TO WORK SHOWN ON THESE DRAWINGS SHALL NOT BE CARRIED OUT WITHOUT WRITTEN PERMISSION OF WARDROP ENGINEERING INC.
- THIS DRAWING IS THE EXCLUSIVE PROPERTY OF WARDROP ENGINEERING INC AND THE COPYRIGHT IN THE SAME BEING RESERVED TO THEM. IT MAY BE REPRODUCED ONLY WITH THE PERMISSION OF WARDROP ENGINEERING INC, IN WHICH CASE THE REPRODUCTION MUST BEAR THEIR NAME.

▲		
▲		
▲		
▲		
▲		
▲	ISSUED FOR TENDER	7 MAY 2003
No.	REVISED/ ISSUED/ PLOTTED	DATE

1 MEZZANINE FLOOR PLAN
1 : 100

number Number **TEN** Architectural Group
310-115 Bannatyne Ave. Phone (204) 942-0981
Winnipeg, Manitoba Fax (204) 947-9625
Canada R3B 0R3 E-mail 10@number10.com

ST. JAMES-ASSINIBOIA CENTENNIAL POOL
FITNESS FACILITY ADDITION
644 PARKDALE ST. WINNIPEG, MB
PROJECT

ELECTRICAL
MEZZANINE FLOOR LIGHTING
SHEET TITLE

WARDROP Engineering Inc.
CONSULTING ENGINEER

ARCHITECTURAL SEAL	SEAL
--------------------	------

DRAWN BY	H.P.C.C.	SCALE	AS NOTED
CHECKED BY	L.K.	DATE	MAY 2003
TENDER NO.	10/2003		
PROJECT NO.	02049	SHEET NO.	E2.2

