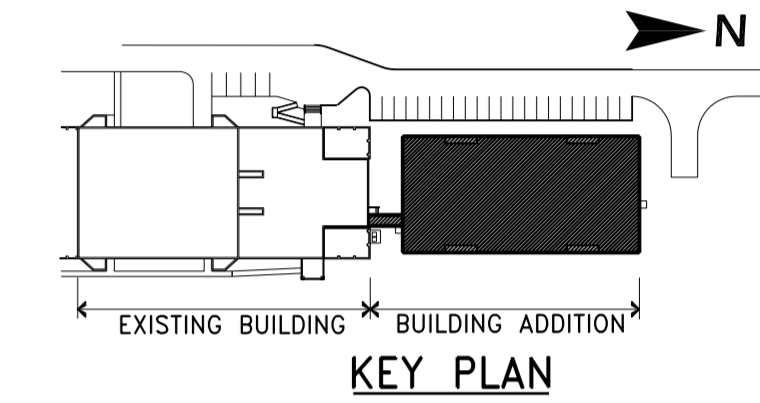


LEGEND

BD BALANCE DAMPER

NOTE:

1. SUPPLY DUCT TO RUN IN TRUSS SPACE



- THIS DRAWING MUST NOT BE SCALED.
- THE GENERAL CONTRACTOR SHALL VERIFY ALL DIMENSIONS, DATINGS, AND LEVELS PRIOR TO COMMENCEMENT OF WORK. ALL ERRORS AND OMISSIONS TO BE REPORTED TO WARDROP ENGINEERING INC. BEFORE PROCEEDING.
- VARIATIONS AND MODIFICATIONS TO WORK SHOWN ON THESE DRAWINGS SHALL NOT BE CARRIED OUT WITHOUT WRITTEN PERMISSION OF WARDROP ENGINEERING INC.
- THIS DRAWING IS THE EXCLUSIVE PROPERTY OF WARDROP ENGINEERING INC. AND THE COPYRIGHT IN THE SAME BEING RESERVED TO THEM. IT MAY BE REPRODUCED ONLY WITH THE PERMISSION OF WARDROP ENGINEERING INC. IN WHICH CASE THE REPRODUCTION MUST BEAR THEIR NAME.

△		
△		
△		
△		
△	ISSUED FOR TENDER	7 MAY 2003
No.	REVISED/ ISSUED/ PLOTTED	DATE

number Number **TEN** Architectural Group
 310-115 Barnabyne Ave. Phone (204) 942-0981
 Winnipeg, Manitoba Fax (204) 947-9626
 Canada R3B 0R3 E-mail 10@numberten.com

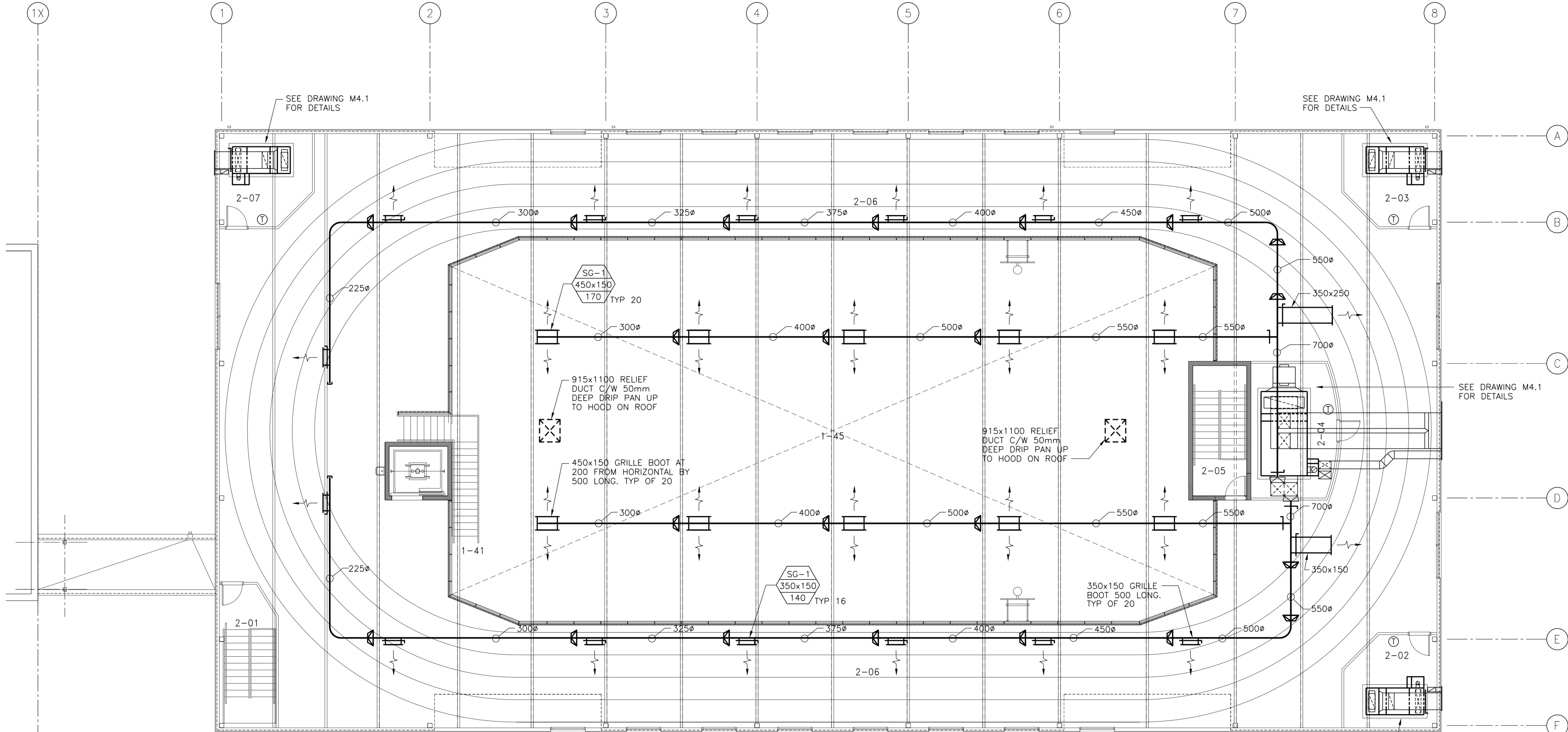
ST. JAMES-ASSINIBOIA CENTENNIAL POOL FITNESS FACILITY ADDITION

644 PARKDALE ST. WINNIPEG, MB

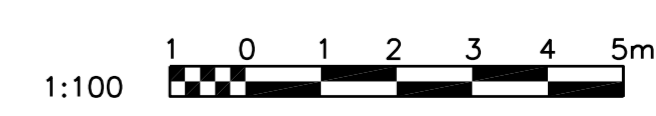
MECHANICAL MEZZANINE FLOOR HVAC

WARDROP Engineering Inc.
 CONSULTING ENGINEER

ARCHITECTURAL SEAL	SEAL
DRAWN BY: H.P.C.C./E.V.	SCALE: AS NOTED
CHECKED BY: M.B./J.B.	DATE: MAY 2003
TENDER NO. 10/2003	SHEET NO. M2.2
PROJECT NO. 02049	



1 MEZZANINE FLOOR PLAN
 1 : 100



0223140100-M2