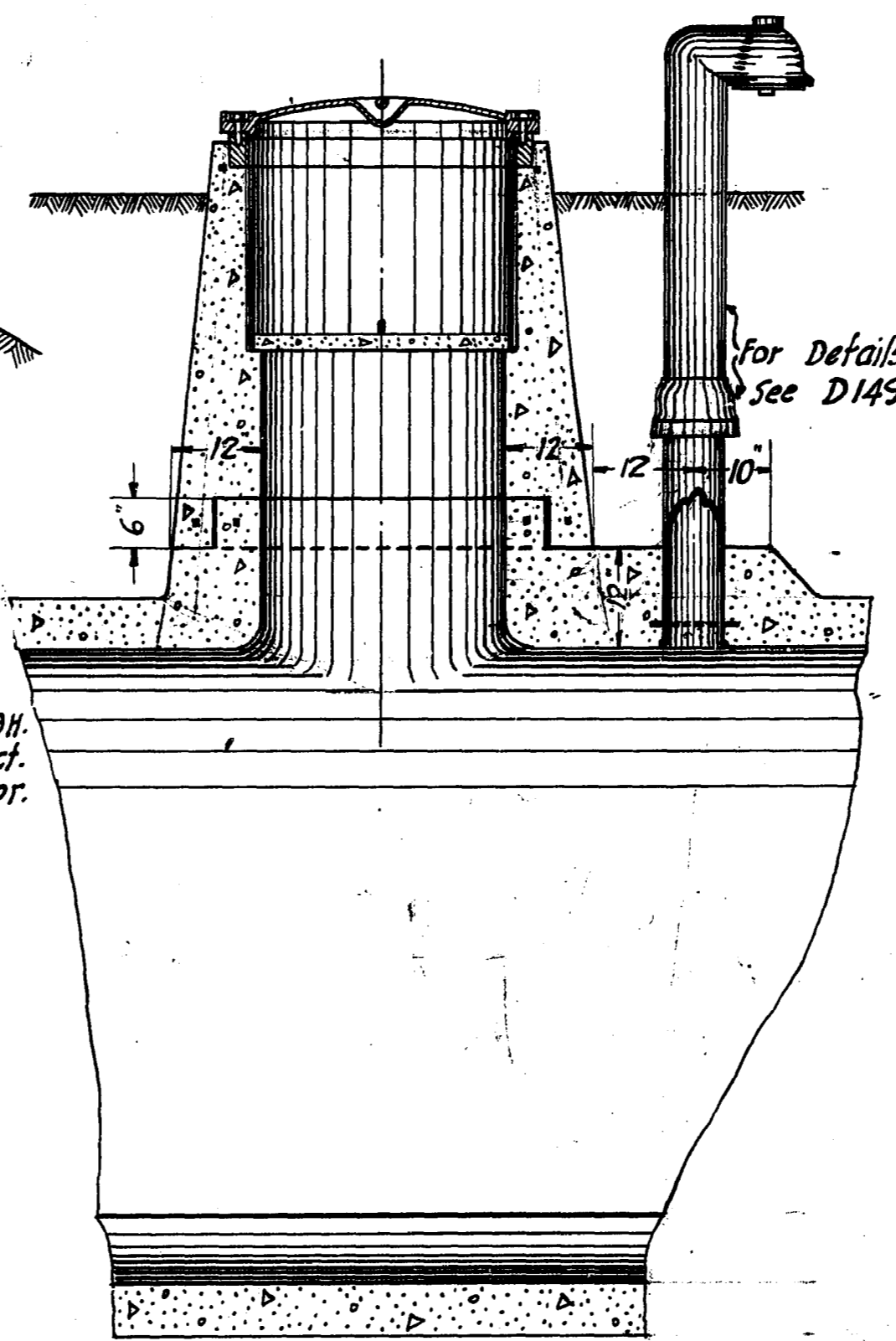
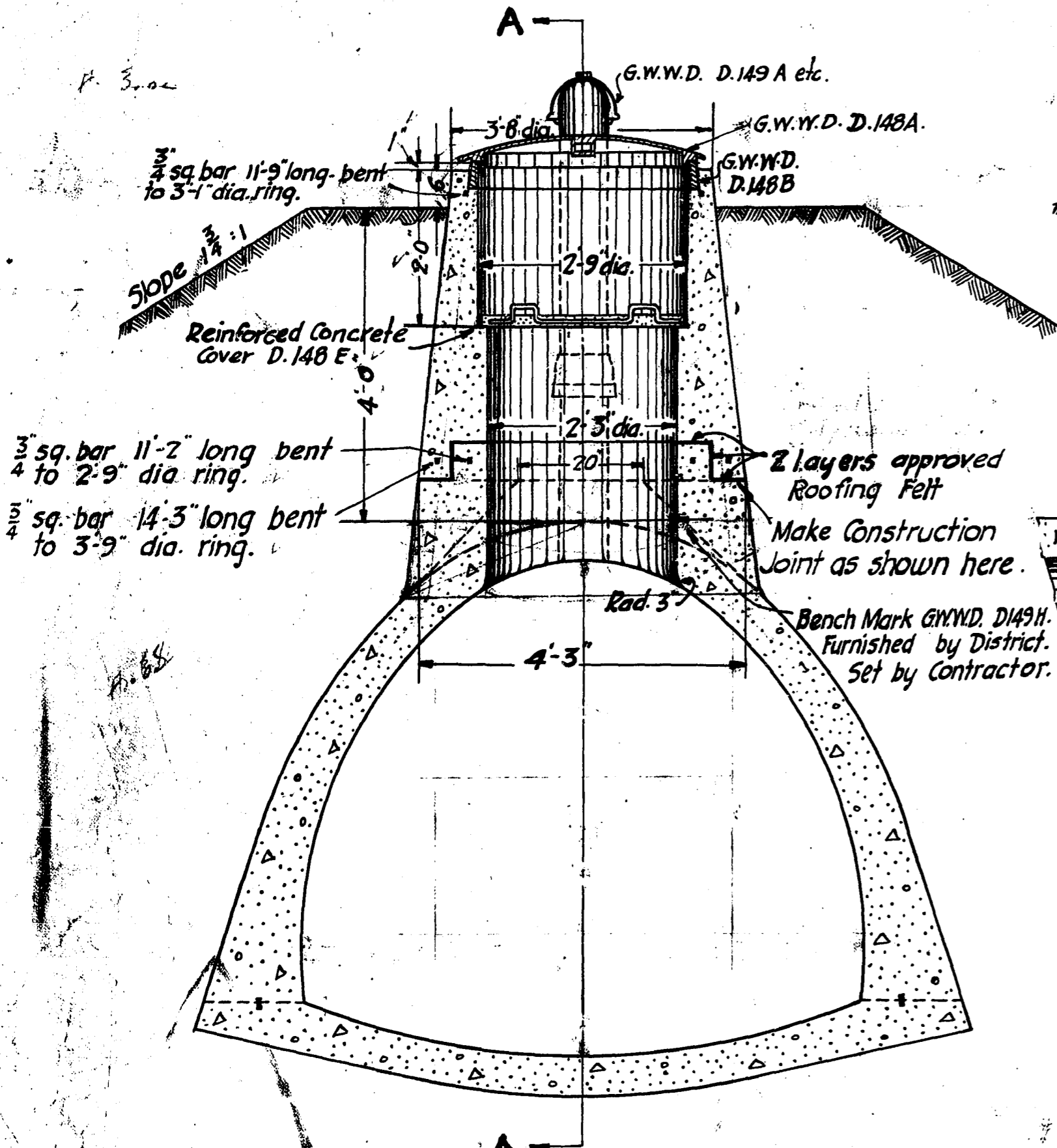


B.221



Section on AA.

LOCATED AT

YEAR	STATION	CONTRACT
1915	1132 + 50	30
	1233 + 70	
	1287 + 50	
	1335 + 00	
		31
1756 + 00		
1808 + 00		
2265 + 00		
		32
2710 + 00		
3059 + 00		
3115 + 00		
		33
3450 + 00		
3777 + 00		
3815 + 00		
		34
4155 + 00		
4520 + 00		
	4572 + 00	

STEEL 71.0 LBS ✓
CONCRETE 1.54 Cu.Yds. ✓

GENERAL DRAWING

NOTE:

Locate Expansion Joints in Aqueduct symmetrically about Manhole.
All Iron Work to be painted two coats Sherwin-Williams Metallastic or equivalent

FOR FURTHER DETAILS SEE D.148 & D.149

B.221

Drawn by: T.H.K.
Traced by: T.H.K.
Checked by: D.F.P.
Approved: M.W. Sawyer

Amounts of Steel & Concrete added Feb. 22-17 1/16.

Joe A. Fuentes
CONSULTING ENGINEER
W. Schaefer
CHIEF ENGINEER

GREATER WINNIDEG WATER DISTRICT
SECTION THROUGH TYPICAL
MANHOLE
March 30th 1915 scale: 1/2" = 1'