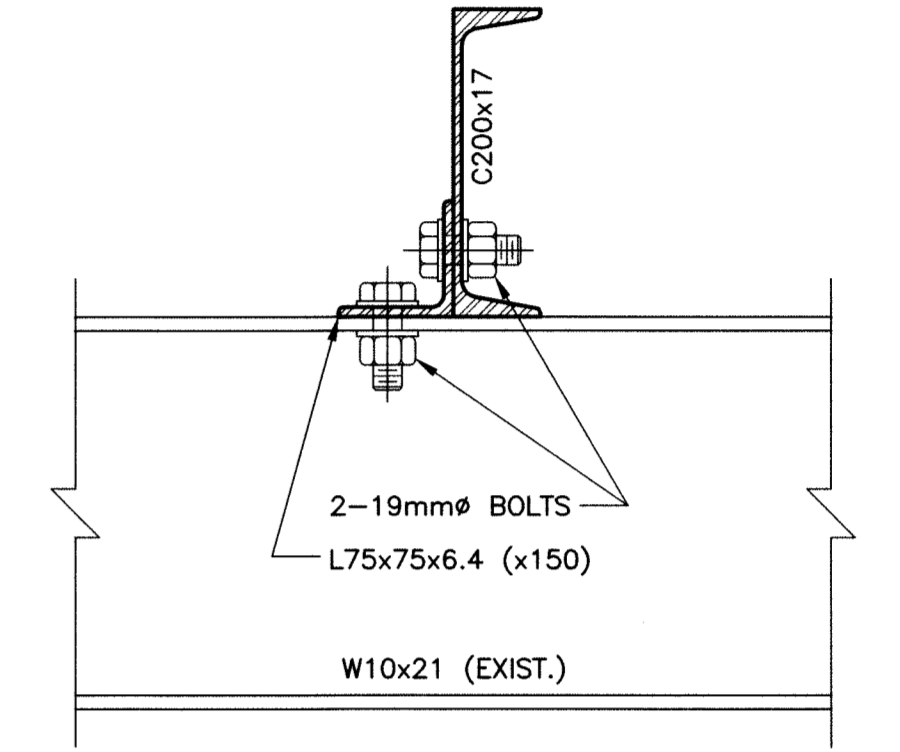


1 ROOF/CEILING SPACE PLAN
 SCALE: 1:100mm (24"x36")
 1:200mm (11"x17")

- SCOPE OF WORK NOTES:**
- 1 PROVIDE NEW STAIR FROM CEILING SPACE - REF. DWG P1-S3.
 - 2 PROVIDE CHANNEL FRAMES TO SUPPORT NEW AIR HANDLING UNITS, DIMENSIONS TO SUIT FINALIZED UNIT DIMENSIONS.
 - 3 PROVIDE NEW CATWALK AND HANDRAIL AS REQUIRED TO ACCESS NEW AHU's AND NEW STAIR, IN LOCATIONS WHERE EXISTING DUCT IS REMOVED; REMOVE CATWALK WHICH IS OVER DUCT AND REPLACE WITH LEVEL WALKWAY.
 - 4 PROVIDE RAISED CURB AND MEMBRANE AT ALL PIPE ROOF PENETRATIONS.
 - 5 PROVIDE 3-38x290 WD BLOCKING CURBS FOR ROOF TOP UNITS ABOVE AHU 1 AND 2.
- CONTINUED ON DRAWING "S-2"



2 DETAIL SECTION
 SCALE: 1:5mm (24"x36")
 1:10mm (11"x17")

- STRUCTURAL AND MISCELLANEOUS STEEL**
1. STRUCTURAL AND MISCELLANEOUS STEEL FABRICATION AND ERECTION SHALL BE IN ACCORDANCE WITH CAN/CSA-S16.1-M89.
 2. STRUCTURAL STEEL SHALL MEET THE REQUIREMENTS OF CAN/CSA-G40.20/G40.21-M92.
 ROLLED SHAPES & PLATES CSA G40.21-300W
 ANCHOR BOLTS (GALV.) ASTM A307M
 BOLTS, NUTS & WASHERS ASTM A325M
 WELDING ELECTRODES CSA W48.1 M1980
 3. WELDING SHALL BE IN ACCORDANCE WITH CSA W59-M1989, BY WELDERS CERTIFIED AND QUALIFIED IN ACCORDANCE WITH CSA W47.1-1983. ALL WELDS TO BE 6mm UNLESS NOTED OTHERWISE.
 4. FIELD CONNECTIONS SHALL BE BOLTED 19mm DIAMETER A325 FRICTION TYPE UNLESS NOTED OTHERWISE. BOLTS SHALL BE TORQUED IN ACCORDANCE WITH CAN/CSA S16.1-M89.
 5. STRUCTURAL AND MISCELLANEOUS STEEL NOT EMBEDDED IN CONCRETE SHALL BE SURFACE PREPPED AND SHOP PRIMED WITH RED OXIDE PRIMER UNLESS OTHERWISE SPECIFIED.
- UNIT MASONRY**
1. MASONRY UNITS SHALL BE MANUFACTURED IN ACCORDANCE WITH CAN3-A165.1-M85. CONSTRUCT MASONRY IN ACCORDANCE WITH CAN3-A371-M84.
 2. ALL CONCRETE MASONRY TO BE AS NOTED AND DETAILED WITH A MINIMUM NET COMPRESSIVE STRENGTH OF 15 MPa.

3. MORTAR SHALL BE TYPE 'S' AND MANUFACTURED TO CSA A179-M76.
4. CONCRETE IN-FILL SHALL BE 25 MPa CONCRETE; MAX. AGGREGATE 3/8"; MAX. SLUMP 4" (HORIZONTAL IN-FILL) 8" (VERTICAL IN-FILL).
5. PROVIDE 9 GA. LADDER TYPE 'DUR-O-WAL' (OR EQUAL) HORIZONTAL JOINT REINFORCEMENT AT EVERY 2ND COURSE.
6. FASTEN VENEER TO BACKUP WALL WITH FERRO TIES SPECIFIED FOR STONEMWORK.

NO.	REVISIONS	DATE	BY
1	ISSUED FOR ADDENDUM NO. 1	10/02/26	RJL
0	ISSUED FOR TENDER	10/01/28	RJL

KGS GROUP CONSULTING ENGINEERS & PROJECT MANAGERS
 WINNIPEG (204) 896-1209
 THUNDER BAY (807) 345-2233

DESIGNED BY: RJL
 CHECKED BY:
 DRAWN BY: MB
 APPROVED BY:
 RELEASED FOR CONSTRUCTION: DATE

HOR. SCALE: AS SHOWN
 VERTICAL:

ENGINEER'S SEAL
 THE ORIGINAL ISSUE REV. 0 WAS STAMPED, DATED AND SIGNED
 BY: R.J.LONG, P.ENG.
 ON: 2010/01/21

CONSULTANT DRAWING NO. P1-S1

THE CITY OF WINNIPEG
 PUBLIC WORKS DEPARTMENT

PROJECT TITLE: FORT ROUGE LEISURE CENTRE HVAC UPGRADES - PHASE 1

SHEET 001 OF 003
 COMPUTER FILE NAME: 08-0107-09-P1-S1
 CITY DRAWING NUMBER

ROOF/CEILING SPACE PLAN AND DETAILS