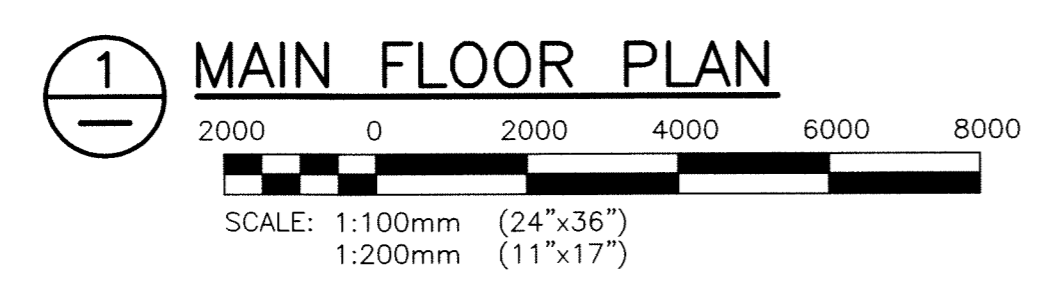


- NOTES:**
1. PROVIDE A SIX ZONE LIGHTING CONTROL PANEL. PROVIDE A SWITCH PANEL AT DOOR TO SELECT EACH ZONE. SWITCHES SHALL HAVE A LOCKABLE COVER.
 2. ALL LIGHTING WITHIN ROOM TO BE ON A LIGHTING CONTACTOR. CONTACTOR TO BE CONTROLLED FROM A KEYSWITCH AT DOOR.
 3. PROVIDE BATTERY BANKS WITH A 30 MINUTE RUN TIME RATING. BATTERY BANKS SHALL BE 360W AND SUFFICIENT IN NUMBER TO ACCOMMODATE ALL HEADS (ESTIMATED NINE BATTERY BANKS). PROVIDE A TOTAL OF 18 ZONES OF SENSING FOR EMERGENCY LIGHTING (ESTIMATED TWO PER BATTERY BANK). THESE SHALL BE CONNECTED TO TURN ON DURING LOSS OF POWER TO ANY OF THE AREA LIGHTING CIRCUITS. GROUP BATTERY BANKS INTO TWO LOCATIONS AND CONFIGURE FOR EASY SERVICE. ALL BATTERY BANKS AND HEADS SHALL BE CLEARLY LABELLED.
 4. EXISTING BATTERY BANKS PROVIDE POWER FOR EXIT LIGHTING ALL READY IN PLACE. ENSURE EXIT SIGN POWER IS MAINTAINED.
 5. UNLESS NOTED AS EXISTING (E), ALL LOCATIONS ARE NEW.

- LEGEND:**
- FLUORESCENT LUMINAIRE (1'x4') HATCHING DENOTES NIGHT LIGHT (TYP.)
 - WALL MOUNTED LUMINAIRE
 - DUAL REMOTE EMERGENCY LIGHTING HEADS
HD = HEAVY DUTY
N = NEW LOCATION (NOTE 5)
 - SINGLE POLE SWITCH
 - EMERGENCY LIGHTING BATTERY UNIT (NOTE 4)

GENERAL NOTES:
WHERE NEW LIGHTING OR EMERGENCY LIGHTING IS INSTALLED, REMOVE AND DISPOSE OF EXISTING EQUIPMENT BEING REPLACED.



1 MAIN FLOOR PLAN

B.M. ELEV. :		KGS GROUP CONSULTING ENGINEERS & PROJECT MANAGERS WINNIPEG (204) 896-1209 THUNDER BAY (807) 345-2233	ENGINEER'S SEAL	THE CITY OF WINNIPEG PUBLIC WORKS DEPARTMENT
			THE ORIGINAL ISSUE REV. 0 WAS STAMPED, DATED AND SIGNED	
DESIGNED BY	AP	CHECKED BY	BY A. PAWLKOWICH, P. ENG.	FORT ROUGE LEISURE CENTRE HVAC UPGRADES - PHASE 1
DRAWN BY	BGO	APPROVED BY	ON 2010/01/27	
1 ADDENDUM 03/03/10		HOR. SCALE: AS SHOWN	RELEASED FOR CONSTRUCTION:	SHEET 001 OF 001 COMPUTER FILE NAME 08-0107-09E05 CITY DRAWING NUMBER
0 ISSUED FOR TENDER 27/01/10		VERTICAL:	DATE	
NO. REVISIONS DATE BY DATE		CONSULTANT DRAWING NO. P1-E05		MAIN FLOOR PLAN LIGHTING ARRANGEMENT