



01_S_Bank_Toe_027_080530_DY.jpg



02_N_Bank_From_South_041_080530_DY.jpg



04_N_Bank_Toe_078_080530_DY.jpg



05_N_Bank_From_South_044_080530_DY.jpg



05_N_Bridge_and_Piers_064_080530_DY.jpg



11_S_Pipe_Approaches_024_080530_DY.jpg



12_N_Bank_From_South_053_080530_DY.jpg



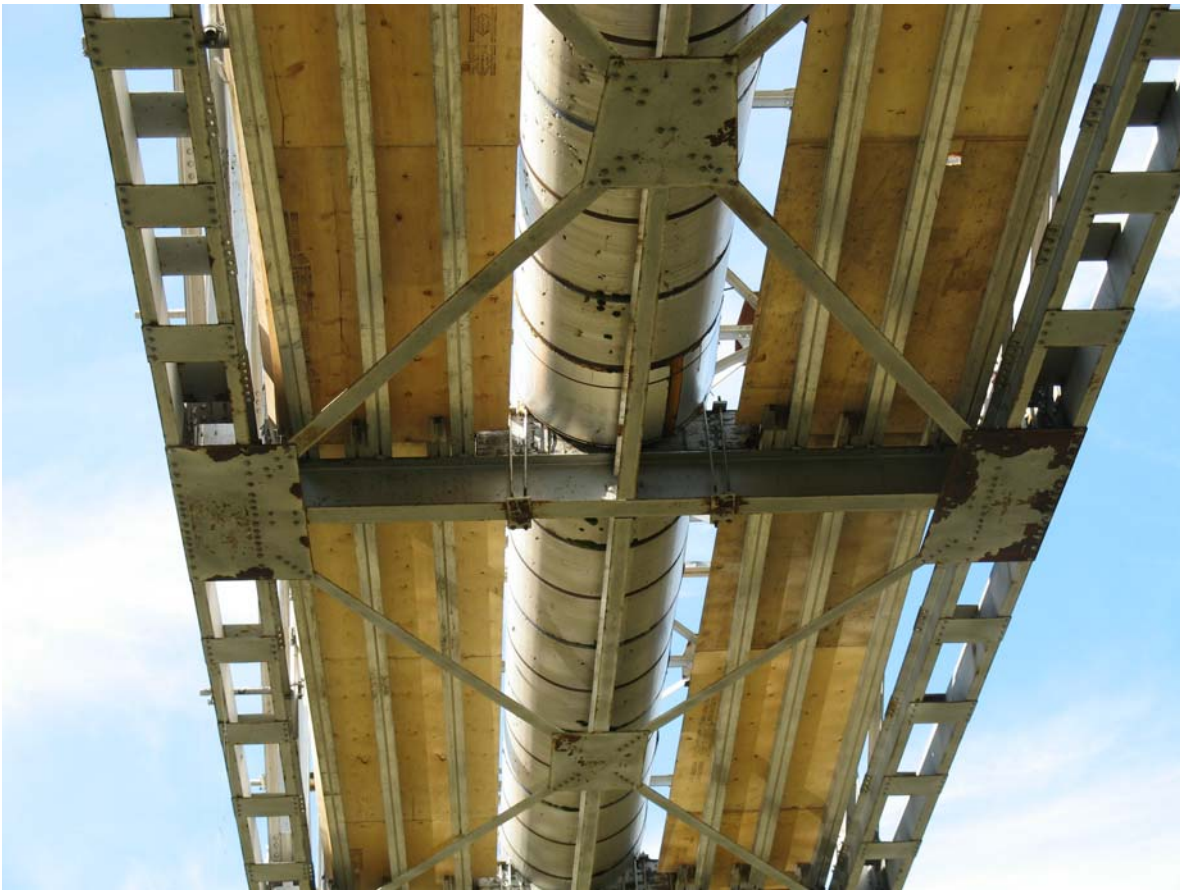
15_S_Bridge_and_Piers_195_080530_DY.jpg



16_N_Pipe_Approaches_088_080530_DY.jpg



A3-01 - East Elevation form NE .JPG



A3-02 - Closeup of Bottom of Bridge (with temp walkways on top).JPG



A3-03 - Closeup of Typ Floor Beam and Pipe Cradle (with temp walkways in place).JPG



A3-04 - Member i-l West Half Bottom Flange Deformed at Holddown for Pipe.JPG



A3-05- Member i=l West Half Bottom Flange Deformed at Pipe Holddown.JPG



A3-06 - Top of Bridge East Half.JPG



A3-07 - Top of Bridge West half.JPG



A3-08 - Top of Bridge.JPG



A3-09 - Pipe Insulation and Cladding-South End.JPG



A3-10 - Existing Pipeline and Insulation on Bridge.jpg



A3-11 - Existing Pipe Coatings, Insulation and Cladding.jpg



A3-12 - Existing Pipe Coating.jpg