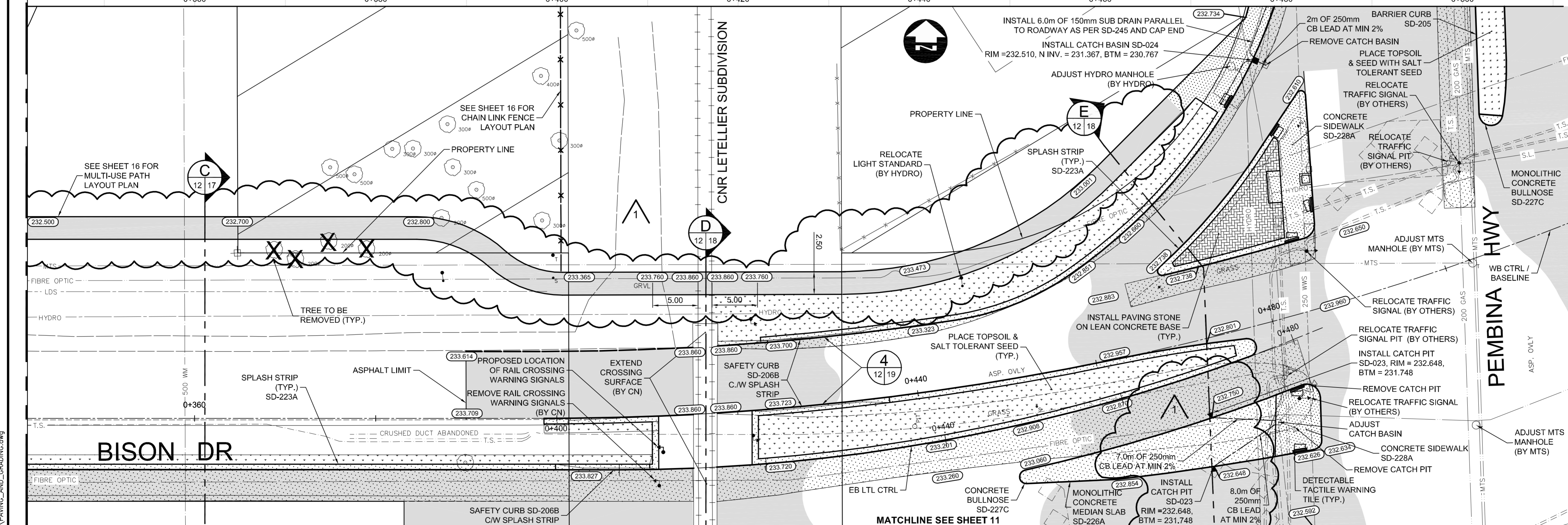


- CONSTRUCTION NOTES:**
- THE CONTRACTOR MUST COMPLY WITH ALL SPECIFICATIONS OUTLINED IN E23 - OPERATING CONSTRAINTS FOR WORK IN CLOSE PROXIMITY TO FEEDERMAINS.
 - PROPOSED WATERMAIN RENEWAL TO BE COMPLETED BY OTHERS IN JUNE / JULY 2011.
 - EXIST. ALUMINUM GUARDRAIL TO BE SALVAGED AND DELIVERED TO CITY YARD. IN ACCORDANCE WITH E21



- METRIC**
WHOLE NUMBERS INDICATE MILLIMETRES
DECIMALIZED NUMBERS INDICATE METRES
- WARNING**
IF POWER EQUIPMENT OR EXPLOSIVES ARE TO BE USED FOR EXCAVATION ON THIS PROJECT THE CONTRACTOR MUST:
- NOTIFY THE GAS COMPANY OF THE PROPOSED LOCATION OF EXCAVATION.
 - TAKE PRECAUTION TO AVOID DAMAGE TO GAS COMPANY INSTALLATIONS SEE PROVINCIAL REGULATION 210/72 FOR DETAILS.
 - OBTAIN EXCAVATION PERMITS PRIOR TO CONSTRUCTION.

150 WM	WATERMAIN	150 WM	HYDRO	HYDRO	150 mm W.M.	WATERMAIN	150 mm W.M.
300 LDS	LAND DRAINAGE SEWER	300 LDS	MTS	M.T.S.	300 mm L.D.S.	LAND DRAINAGE SEWER	300 mm L.D.S.
250 WWS	WASTE WATER SEWER	250 WWS	CONCRETE	CONCRETE	250 mm W.W.S.	WASTE WATER SEWER	250 mm W.W.S.
○	MANHOLE	○	ASPHALT	ASPHALT	○	MANHOLE	○
□	CATCH BASIN	□	PLANING	PLANING	□	CATCH BASIN	□
▽	CURB INLET	▽	SIDEWALK	SIDEWALK	▽	CURB INLET	▽
+	JUNCTIONS	+	PAVING STONES	PAVING STONES	+	JUNCTIONS	+
—	CULVERT	—	PARTIAL DEPTH REPAIR	PARTIAL DEPTH REPAIR	—	CULVERT	—
100 GAS	GAS	100 GAS	PROPERTY LINE	PROPERTY LINE	100 GAS	GAS	100 GAS
EXISTING	LEGEND-PLAN	PROPOSED	SURVEY BAR	SURVEY BAR	EXISTING	LEGEND-PROFILE	PROPOSED
			CURB RAMP	CURB RAMP			

UNDERGROUND STRUCTURES

SUPPLY, U/G STRUCTURES COMMITTEE DATE

NOTE:
LOCATION OF UNDERGROUND STRUCTURES AS SHOWN ARE BASED ON THE BEST INFORMATION AVAILABLE BUT NO GUARANTEE IS GIVEN THAT ALL EXISTING UTILITIES ARE SHOWN OR THAT THE GIVEN LOCATIONS ARE EXACT. CONFIRMATION OF EXISTENCE AND EXACT LOCATION OF ALL SERVICES MUST BE OBTAINED FROM THE INDIVIDUAL UTILITIES BEFORE PROCEEDING WITH CONSTRUCTION.

B.M. 654271 N 5517192.470 E 632610.651
ELEV. 233.084

DESIGNED BY	RTP
DRAWN BY	PMW
CHECKED BY	JNC
APPROVED BY	DPK
HOR. SCALE	1:250
VERTICAL	1:10
RELEASED FOR CONSTRUCTION	DATE 11/06/23
ORIGINAL SIGNED BY B. KIBBINS	

NO.	REVISIONS	DATE	BY
2	ISSUED FOR ADDENDUM #1	11/07/04	JNC
1	ISSUED FOR TENDER	11/06/23	JNC
		2011/06/23	



THE CITY OF WINNIPEG
PUBLIC WORKS DEPARTMENT

BISON DRIVE & PEMBINA HIGHWAY
INTERSECTION IMPROVEMENTS

CITY DRAWING NUMBER: P-3327-12
SHEET 12 OF 24
CONSULTANT DRAWING NUMBER

PAVING AND GRADING
STA: 0+340 TO 0+505 WESTBOUND CONTROL LINE

CONSULTANT PROJECT NUMBER: 11-4587

G:\CAD\114587\Contract\Curren\PAVING_AND_GRADING.dwg