

- CONSTRUCTION NOTES:**
1. THE CONTRACTOR MUST COMPLY WITH ALL SPECIFICATIONS OUTLINED IN E23 - OPERATING CONSTRAINTS FOR WORK IN CLOSE PROXIMITY TO FEEDERMAINS.
  2. PROPOSED WATERMAIN RENEWAL TO BE COMPLETED BY OTHERS IN JUNE / JULY 2011.
  3. EXIST. ALUMINUM GUARDRAIL TO BE SALVAGED AND DELIVERED TO CITY YARD. IN ACCORDANCE WITH E21

MATCHLINE AT STA: 1+840

MATCHLINE AT STA: 1+665

**METRIC**  
WHOLE NUMBERS INDICATE MILLIMETRES  
DECIMALIZED NUMBERS INDICATE METRES

- WARNING**
- IF POWER EQUIPMENT OR EXPLOSIVES ARE TO BE USED FOR EXCAVATION ON THIS PROJECT THE CONTRACTOR MUST:
1. NOTIFY THE GAS COMPANY OF THE PROPOSED LOCATION OF EXCAVATION.
  2. TAKE PRECAUTION TO AVOID DAMAGE TO GAS COMPANY INSTALLATIONS SEE PROVINCIAL REGULATION 210/72 FOR DETAILS.
  3. OBTAIN EXCAVATION PERMITS PRIOR TO CONSTRUCTION.

150 WM	150 WM	HYDR	HYDR	HYDR	150 mm W.M.	WATERMAIN	150 WM

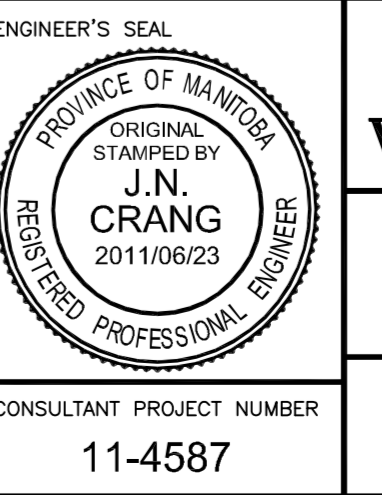
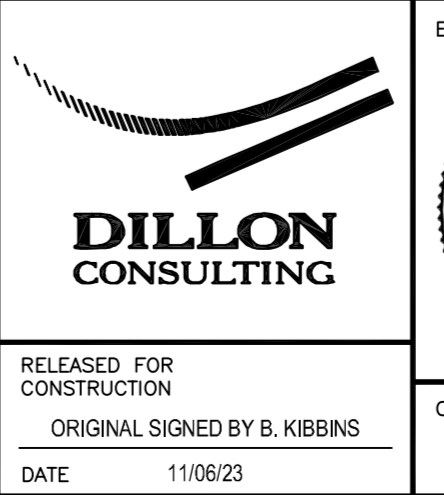
**UNDERGROUND STRUCTURES**

DATE: \_\_\_\_\_

NOTE: LOCATION OF UNDERGROUND STRUCTURES AS SHOWN ARE BASED ON THE BEST INFORMATION AVAILABLE BUT NO GUARANTEE IS GIVEN THAT ALL EXISTING UTILITIES ARE SHOWN OR THAT THE GIVEN LOCATIONS ARE EXACT. CONFIRMATION OF EXISTENCE AND EXACT LOCATION OF ALL SERVICES MUST BE OBTAINED FROM THE INDIVIDUAL UTILITIES BEFORE PROCEEDING WITH CONSTRUCTION.

B.M. 654271 N	5517192.470 E	632610.651
ELEV. 233.084		
NO.	REVISIONS	DATE
2	ISSUED FOR ADDENDUM #1	11/07/04
1	ISSUED FOR TENDER	11/06/23

DESIGNED BY	RTP
DRAWN BY	PMW
CHECKED BY	JNC
APPROVED BY	DPK
HOR. SCALE	1:250
VERTICAL	1:10
DATE	2011/06/23



**THE CITY OF WINNIPEG**  
PUBLIC WORKS DEPARTMENT

BISON DRIVE & PEMBINA HIGHWAY INTERSECTION IMPROVEMENTS

PAVING AND GRADING  
STA: 1+665 TO 1+840

CITY DRAWING NUMBER: P-3327-8  
SHEET: 8 OF 24  
CONSULTANT DRAWING NUMBER