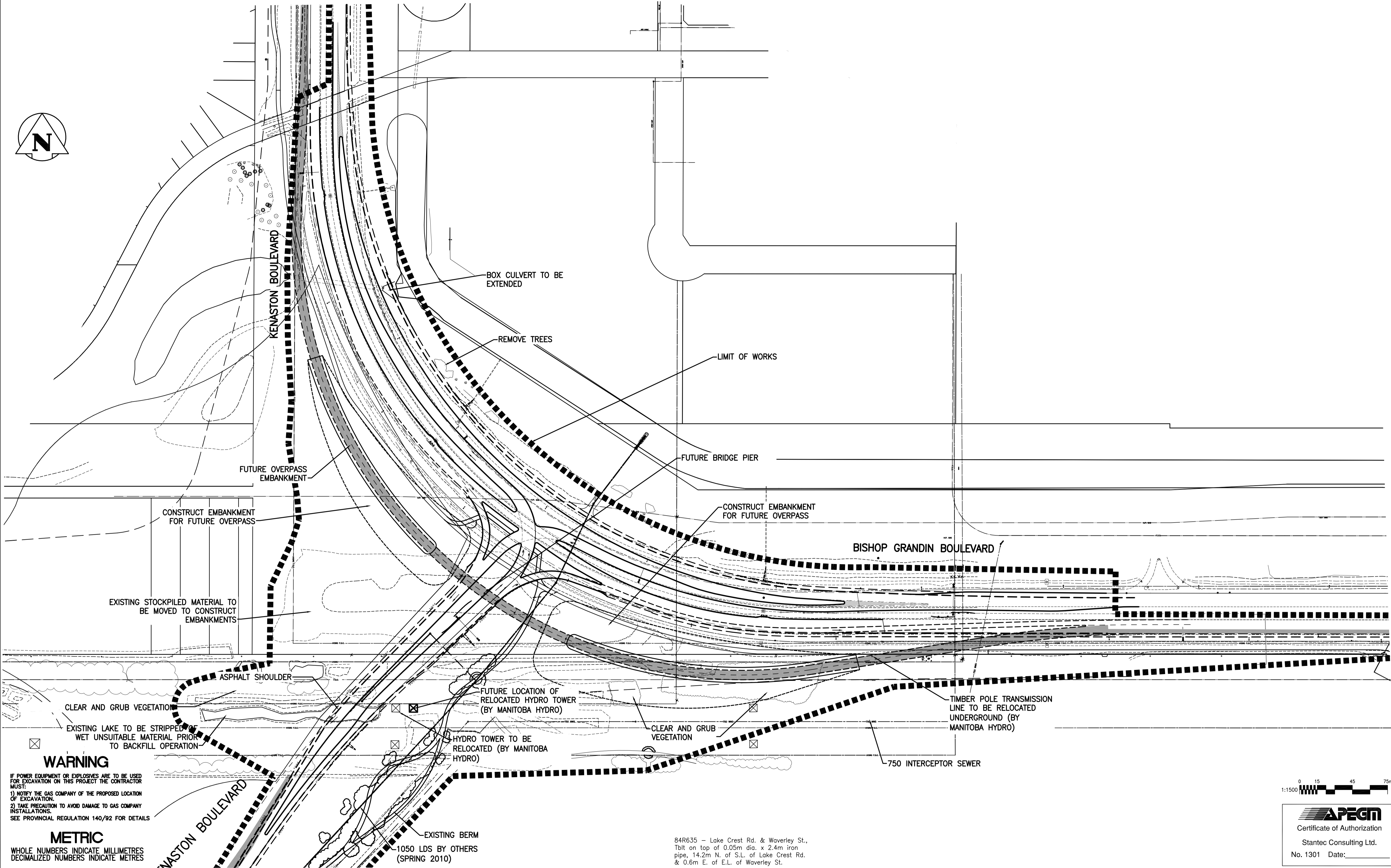
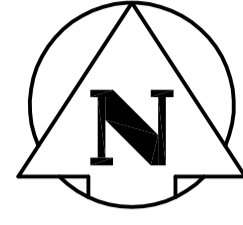
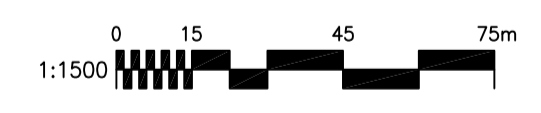


APPENDIX E – CONCEPTUAL PLAN OF FLYOVER STRUCTURE



WARNING
 IF POWER EQUIPMENT OR EXPLOSIVES ARE TO BE USED FOR EXCAVATION ON THIS PROJECT THE CONTRACTOR MUST:
 1) NOTIFY THE GAS COMPANY OF THE PROPOSED LOCATION OF EXCAVATION.
 2) TAKE PRECAUTION TO AVOID DAMAGE TO GAS COMPANY INSTALLATIONS.
 SEE PROVINCIAL REGULATION 140/92 FOR DETAILS

METRIC
 WHOLE NUMBERS INDICATE MILLIMETRES
 DECIMALIZED NUMBERS INDICATE METRES



APEGM
 Certificate of Authorization
 Stantec Consulting Ltd.
 No. 1301 Date: _____

B.M. 84R635
 ELEV. 232.457m
 Bolt on top of 0.05m dia. x 2.4m iron pipe, 14.2m N. of S.L. of Lake Crest Rd. & 0.6m E. of E.L. of Waverley St.

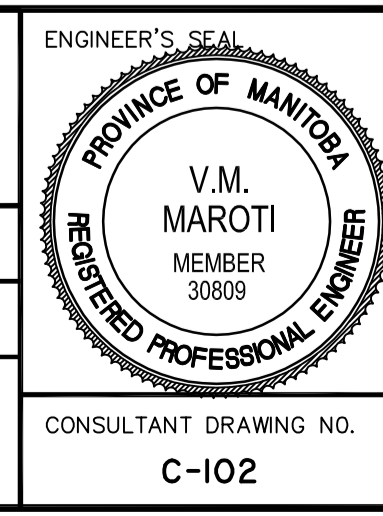
EXISTING	LEGEND-PLAN	PROPOSED	EXISTING	LEGEND-PLAN	PROPOSED	EXISTING	LEGEND-PROFILE	PROPOSED
150 WM	WATERMAIN	150 WM	HYDRO	M.T.S.	150 WM	WATERMAIN	150 WM	
+	HYDRANT	+	+	X	+	HYDRANT, VALVE	+	
⊗	VALVE	⊗	CONCRETE	300 LDS	300 LDS	LAND DRAINAGE SEWER	300 LDS	
---	LAND DRAINAGE SEWER	---	ASPHALT	250 WWS	250 WWS	WASTE WATER SEWER	250 WWS	
---	WASTE WATER SEWER	---	SIDEWALK	X	X	PROFILE		
○	MANHOLE	○	PROPERTY LINE	□	□	NORTH OR WEST GUTTER		
□	CATCH BASIN	□	SURVEY BAR	+	+	SOUTH OR EAST GUTTER		
▽	CURB INLET	▽	GEODETIC BENCHMARK	◇	◇	NORTH OR WEST DITCH		
→	JUNCTIONS	→	DITCH	○	○	SOUTH OR EAST DITCH		
---	CULVERT	---	ELEVATION	(32.23)	△	NORTH OR WEST DITCH		
---	GAS	---	SIDEWALK RAMP	▽	▽	SOUTH OR EAST DITCH		
---	LEGEND-PLAN	---	PROPOSED	---	---	LEGEND-PROFILE	---	---

LOCATION APPROVED UNDERGROUND STRUCTURES
 SUPV. U/G STRUCTURES COMMITTEE DATE
 NOTE:
 LOCATION OF UNDERGROUND STRUCTURES AS SHOWN ARE BASED ON THE BEST INFORMATION AVAILABLE BUT NO GUARANTEE IS GIVEN THAT ALL EXISTING UTILITIES ARE SHOWN OR THAT THE GIVEN LOCATIONS ARE EXACT. CONFIRMATION OF EXISTENCE AND EXACT LOCATION OF ALL SERVICES MUST BE OBTAINED FROM THE INDIVIDUAL UTILITIES BEFORE PROCEEDING WITH CONSTRUCTION.

NO.	ISSUED FOR TENDER	DATE	BY
0	ISSUED FOR TENDER	11.07.15	V.M.M.
	NO. REVISIONS	DATE	BY

Stantec Consulting Ltd.
 905 Waverley Street, Winnipeg, Manitoba
 Tel 204-489-5900 Fax 204-453-9012

DESIGNED BY	V.M.M.	CHECKED BY	S.B.C.
DRAWN BY	T.G.	APPROVED BY	V.M.M.
HOR. SCALE:	1:1500	RELEASED FOR CONSTRUCTION:	
VERTICAL:		DATE	09.06.17



THE CITY OF WINNIPEG
 PUBLIC WORKS DEPARTMENT
 ENGINEERING DIVISION

Wwarp Part I
 KENASTON BOULEVARD EXTENSION - N.B. LANES
 NORTH TOWN ROAD TO BISHOP GRANDIN BOULEVARD
 SITE PLAN
 EARTH WORKS/ROAD WORKS

SHEET 2 OF 65
 CAD FILE DRAWING NUMBER 04840c-102-XXX.dwg
 CITY DRAWING NUMBER P-3316-02

CONSULTANT DRAWING NO. C-102

V:\137\warp\113704840\warp\102_design\warp_102.dwg
 2010-03-15 09:54AM Br: gpl