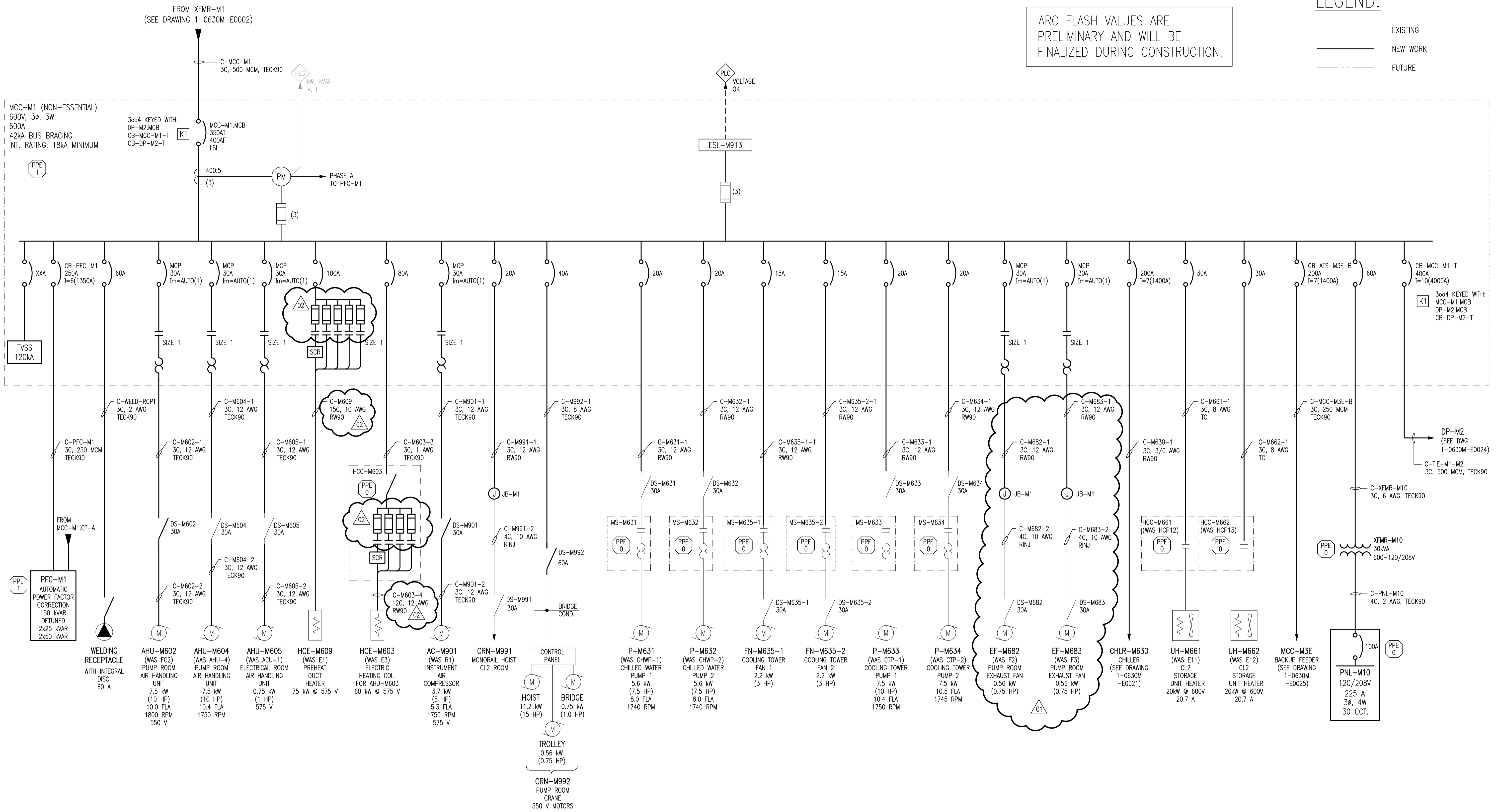


LEGEND:

- EXISTING
- NEW WORK
- - - FUTURE

ARC FLASH VALUES ARE PRELIMINARY AND WILL BE FINALIZED DURING CONSTRUCTION.



LAST SAVE: 2012/08/23 - 9:03am
PATH: M:\508955\AENG\47ELE\DD - General DWG\1-0630M-E0023-001-02.dwg

1-0630M-E0028	MCC SCHEDULES
1-0630M-E0026	MCC ELEVATION AND DETAILS
1-0630M-E0004	SINGLE LINE DIAGRAM, DP-M2
1-0630M-E0001	ELECTRICAL SINGLE LINE DIAGRAM LEGEND AND DETAILS
DRAWING NUMBER	REFERENCE DRAWINGS



NO.	REVISIONS	DATE	DESIGN	CHECK
02	ADDENDUM 2, BID OPP. 490-2012	2012/08/22	BJC	CJR
01	ADDENDUM 1, BID OPP. 490-2012	2012/08/14	BJC	CJR
00	ISSUED FOR TENDER, BID OPP. 490-2012	2012/07/23	BJC	CJR

SNC-LAVALIN INC.
148 Nature Park Way
Winnipeg, MB, Canada R3P 0X7
204-786-8080

DESIGNED BY: B. CLEVEN
CHECKED BY: C. REIMER

DRAWN BY: S. FUNK
APPROVED BY: C. REIMER

SCALE: NTS
RELEASED FOR CONSTRUCTION BY: [Signature]

DATE: 2011/01/25
DATE: [Blank]

CONSULTANT NO.: 508955-0000-47DD-0023

ENGINEER'S SEAL

PRELIMINARY
NOT TO BE
USED FOR
CONSTRUCTION

THE CITY OF WINNIPEG
WATER AND WASTE DEPARTMENT

MACLEAN WATER PUMPING STATION

ELECTRICAL SINGLE LINE DIAGRAM
MCC-M1

CITY DRAWING NUMBER: 1-0630M-E0023

SHEET: 001

REV: 02

SIZE: A1

1-0630M-E0023-001-02.dwg