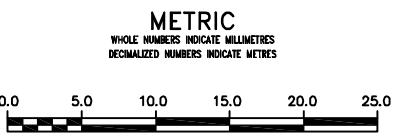
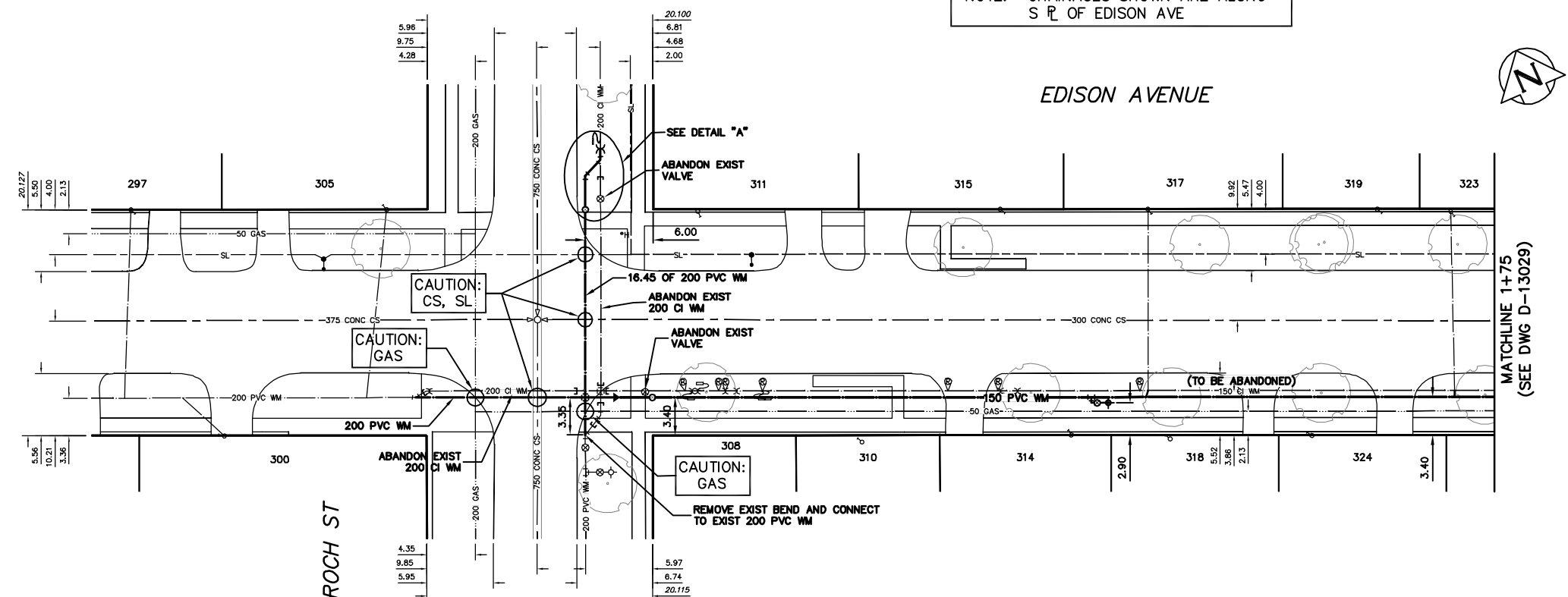


- 0+50
- 0+75 REMOVE EXIST BEND AND CONNECT TO EXIST 200 PVC WM
- 0+79.89 EXIST BEND
- 0+80.14 EXIST COUPLING
- 0+94.02 INSTALL 200X200X200X150 CROSS
- 0+95.39 REMOVE EXIST 200X200X200X150 CROSS
- 0+98.75 INSTALL 200X150 REDUCER
- 0+99.35 ABANDON EXIST VALVE
- 1+00 E E ROCH ST & INSTALL 150 VALVE
- 1+25
- 1+39.09 INSTALL 150X150X150 TEE
- 1+40.84 INSTALL HYDRANT (SD-006)
- 1+50
- 1+70.00 GRADE CHANGE
- 1+75 MATCHLINE

NOTE: CHAINAGES SHOWN ARE ALONG S R L OF EDISON AVE

WATER SERVICE INFORMATION					
ADDRESS	SIZE (mm) MATERIAL (STREET)	SIZE (mm) MATERIAL (PROP.)	SHORT & LONG MEASUREMENT	CORP. LOCATION	REMARKS
308 EDISON AVE	-	20	-	-	SERV. OFF ROCH
RESIDENTIAL	-	COPPER	12.35 SSL EDISON	-	-
310 EDISON AVE	-	20	-	-	-
RESIDENTIAL	-	COPPER	18.65 EEL ROCH	-	-
311 EDISON AVE	-	20	-	-	-
RESIDENTIAL	-	COPPER	3.99 EEL ROCH	-	-
314 EDISON AVE	-	20	-	-	-
RESIDENTIAL	-	COPPER	37.23 EEL ROCH	-	-
315 EDISON AVE	-	20	-	-	-
RESIDENTIAL	-	COPPER	30.83 EEL ROCH	-	-
317 EDISON AVE	20	20	-	-	-
RESIDENTIAL	COPPER	COPPER	44.07 EEL ROCH	OPP S/C	-
318 EDISON AVE	-	20	-	-	-
RESIDENTIAL	-	COPPER	45.92 EEL ROCH	-	-
319 EDISON AVE	-	20	-	-	-
RESIDENTIAL	-	COPPER	64.54 EEL ROCH	-	-
323 EDISON AVE	20	20	-	-	-
RESIDENTIAL	COPPER	COPPER	70.98 EEL ROCH	0.3 E OF S/C	-
324 EDISON AVE	-	20	-	-	-
RESIDENTIAL	-	COPPER	58.70 EEL ROCH	-	-

* SERVICES TO BE RENEWED TO R. ALL OTHERS TO BE RECONNECTED



WARNING
IF POWER EQUIPMENT OR EXPLOSIVES ARE TO BE USED FOR EXCAVATION ON THIS PROJECT THE CONTRACTOR MUST:
1) NOTIFY THE GAS COMPANY OF THE PROPOSED LOCATION OF EXCAVATION.
2) TAKE PRECAUTION TO AVOID DAMAGE TO GAS COMPANY INSTALLATIONS.
SEE PROVINCIAL REGULATION 210/72 FOR DETAILS

LOCATION APPROVED UNDERGROUND STRUCTURES
SUPV. U/G STRUCTURES COMMITTEE DATE
NOTE:
LOCATION OF UNDERGROUND STRUCTURES AS SHOWN ARE BASED ON THE BEST INFORMATION AVAILABLE BUT NO GUARANTEE IS GIVEN THAT ALL EXISTING UTILITIES ARE SHOWN OR THAT THE GIVEN LOCATIONS ARE EXACT. CONFIRMATION OF EXISTENCE AND EXACT LOCATION OF ALL SERVICES MUST BE OBTAINED FROM THE INDIVIDUAL UTILITIES BEFORE PROCEEDING WITH CONSTRUCTION.

B.M. ELEV.	
CONSTRUCTION COMPLETION DATE: YYYY MM DD	
DESIGNED BY	NC
CHECKED BY	SC
DRAWN BY	CJH
APPROVED BY	KZ
SCALE:	
HORIZONTAL	1:250
VERTICAL	1:50
RELEASED FOR CONSTRUCTION	
K.R. ZUREK	
DATE	2012 03 27
DATE	JULY 30, 2012
PLOT DATE:	2012 08 02

ENGINEER'S SEAL
ORIGINAL SIGNED BY S.R.J. COURNOYER 12-07-30
CONSULTANT DRAWING NUMBER

THE CITY OF WINNIPEG
WATER AND WASTE DEPARTMENT
ENGINEERING DIVISION
2012 WATERMAIN RENEWALS
EDISON AVENUE
ROCH STREET TO
75 E OF ROCH STREET
SHEET 5 OF 9
CITY DRAWING NUMBER
D-13028