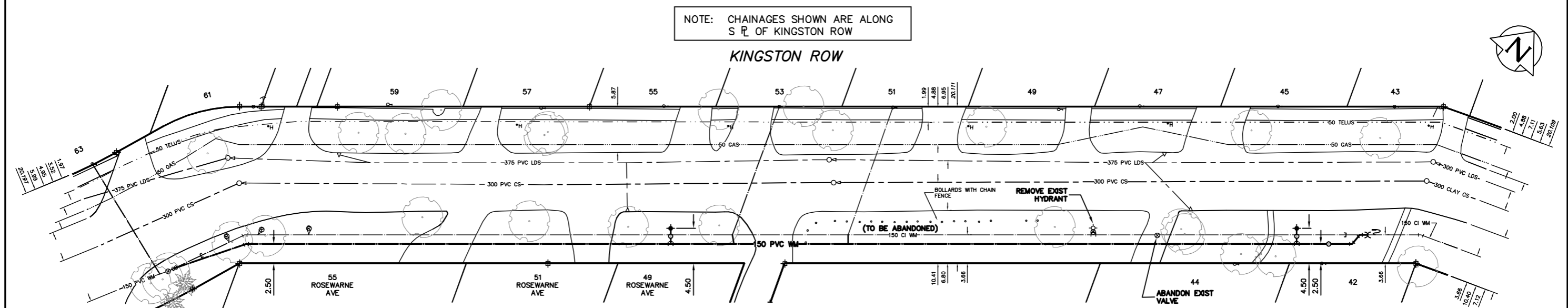


NOTE: CHAINAGES SHOWN ARE ALONG S R OF KINGSTON ROW



**WATER SERVICE INFORMATION**

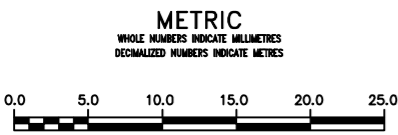
ADDRESS	SIZE (mm) MATERIAL (STREET)	SIZE (mm) MATERIAL (PROP.)	SHORT & LONG MEASUREMENT	CORP. LOCATION	REMARKS
42 KINGSTON ROW RESIDENTIAL	12 COPPER	12 COPPER	0.57 W/L HSE 187.82 E OF ROSEWARNE	-	-
43 KINGSTON ROW RESIDENTIAL	12 LEAD	12 COPPER	5.80 W/L HSE 192.28 E OF ROSEWARNE	-	-
44 KINGSTON ROW RESIDENTIAL	12 LEAD	12 COPPER	5.04 W/L HSE 156.53 E OF ROSEWARNE	-	-
45 KINGSTON ROW RESIDENTIAL	12 LEAD	12 COPPER	2.88 W/L HSE 187.35 E OF ROSEWARNE	-	-
47 KINGSTON ROW RESIDENTIAL	12 LEAD	12 COPPER	4.40 W/L HSE 149.58 E OF ROSEWARNE	-	-
49 KINGSTON ROW RESIDENTIAL	12 LEAD	12 COPPER	0.71 W/L HSE 139.15 E OF ROSEWARNE	-	-

**WATER SERVICE INFORMATION**

ADDRESS	SIZE (mm) MATERIAL (STREET)	SIZE (mm) MATERIAL (PROP.)	SHORT & LONG MEASUREMENT	CORP. LOCATION	REMARKS
51 KINGSTON ROW RESIDENTIAL	20 COPPER	20 COPPER	3.91 E/W HSE 117.85 E OF ROSEWARNE	5.6 W OF S/C	-
53 KINGSTON ROW RESIDENTIAL	20 COPPER	20 COPPER	5.27 E/W HSE 103.27 E OF ROSEWARNE	6.0 W OF S/C	-
55 KINGSTON ROW RESIDENTIAL	20 COPPER	20 COPPER	2.88 W/L HSE 88.70 E OF ROSEWARNE	-	-
57 KINGSTON ROW RESIDENTIAL	20 COPPER	20 COPPER	7.93 W/L HSE 72.70 E OF ROSEWARNE	-	-
59 KINGSTON ROW RESIDENTIAL	12 LEAD	12 COPPER	9.29 W/L HSE 53.19 E OF ROSEWARNE	-	-
61 KINGSTON ROW RESIDENTIAL	20 COPPER	20 COPPER	1.08 W/L HSE 35.86 E OF ROSEWARNE	-	-

\*SERVICES TO BE RENEWED TO R ALL OTHERS TO BE RECONNECTED

NOTE: ALL VALVES TO BE INSTALLED COUNTER-CLOCKWISE TO CLOSE



**WARNING**  
IF POWER EQUIPMENT OR EXPLOSIVES ARE TO BE USED FOR EXCAVATION ON THIS PROJECT THE CONTRACTOR MUST:  
1) NOTIFY THE GAS COMPANY OF THE PROPOSED LOCATION OF EXCAVATION.  
2) TAKE PRECAUTION TO AVOID DAMAGE TO GAS COMPANY INSTALLATIONS.  
SEE PROVINCIAL REGULATION 210/72 FOR DETAILS

**LOCATION APPROVED UNDERGROUND STRUCTURES**  
SUPV. U/G STRUCTURES COMMITTEE DATE  
NOTE: LOCATION OF UNDERGROUND STRUCTURES AS SHOWN ARE BASED ON THE BEST INFORMATION AVAILABLE BUT NO GUARANTEE IS GIVEN THAT ALL EXISTING UTILITIES ARE SHOWN OR THAT THE GIVEN LOCATIONS ARE EXACT. CONFIRMATION OF EXISTENCE AND EXACT LOCATION OF ALL SERVICES MUST BE OBTAINED FROM THE INDIVIDUAL UTILITIES BEFORE PROCEEDING WITH CONSTRUCTION.

NO.	REVISIONS	DATE	BY
1	ADDENDUM REVISIONS (TEXT MASKING)	12/08/02	CJH

DESIGNED BY	CHECKED BY
NC	SC
DRAWN BY	APPROVED BY
CJH	KZ
SCALE:	RELEASED FOR CONSTRUCTION
HORIZONTAL 1:250 VERTICAL 1:50	K.R. ZUREK DATE JULY 30, 2012

ENGINEER'S SEAL  
**ORIGINAL SIGNED BY S.R.J. COURNOYER 12-07-30**

**THE CITY OF WINNIPEG**  
WATER AND WASTE DEPARTMENT  
ENGINEERING DIVISION  
2012 WATERMAIN RENEWALS  
KINGSTON ROW  
18.5 N OF ROSEWARNE AVENUE TO  
195 N OF ROSEWARNE AVENUE  
SHEET 7 OF 9  
CITY DRAWING NUMBER  
D-13030