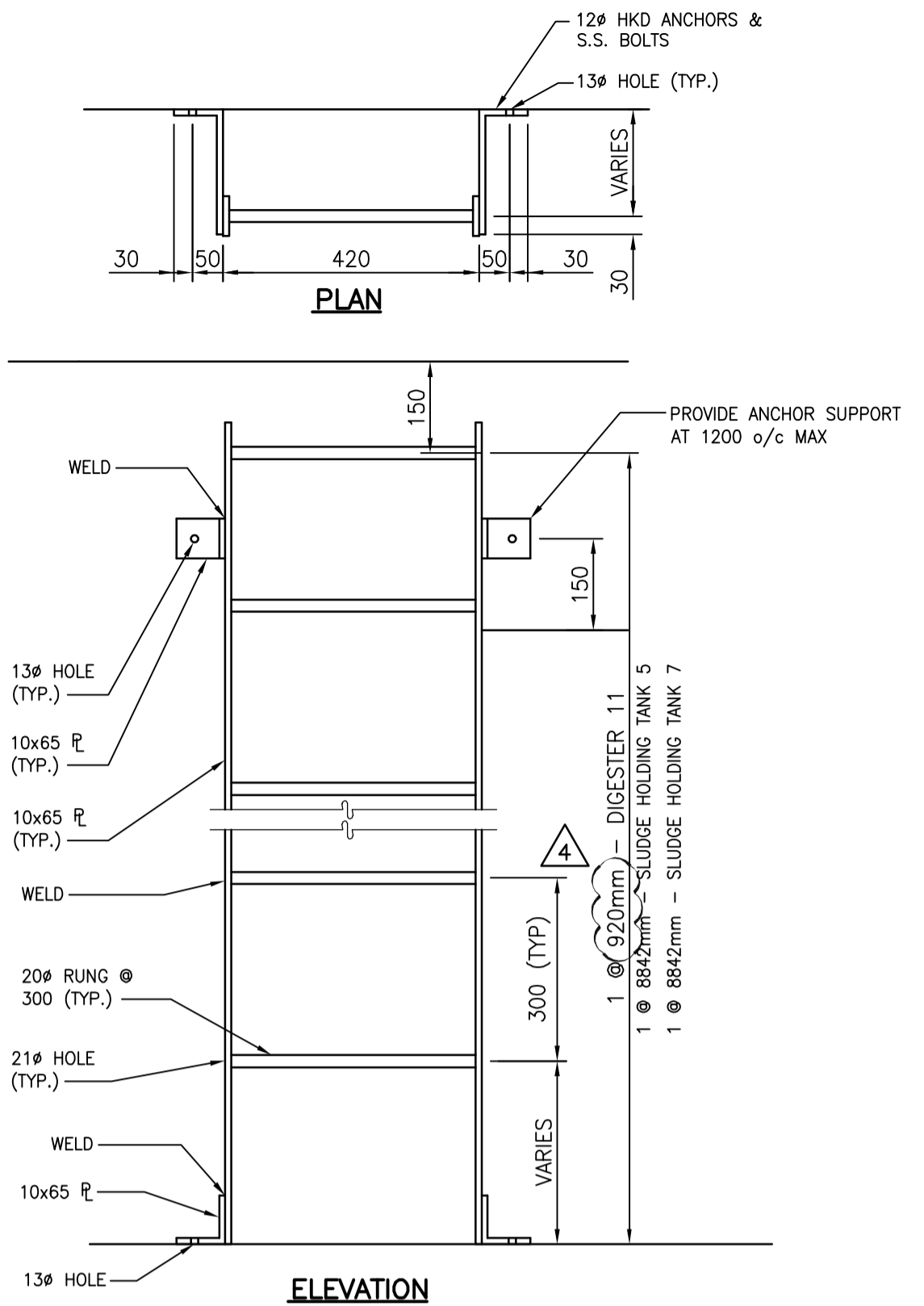
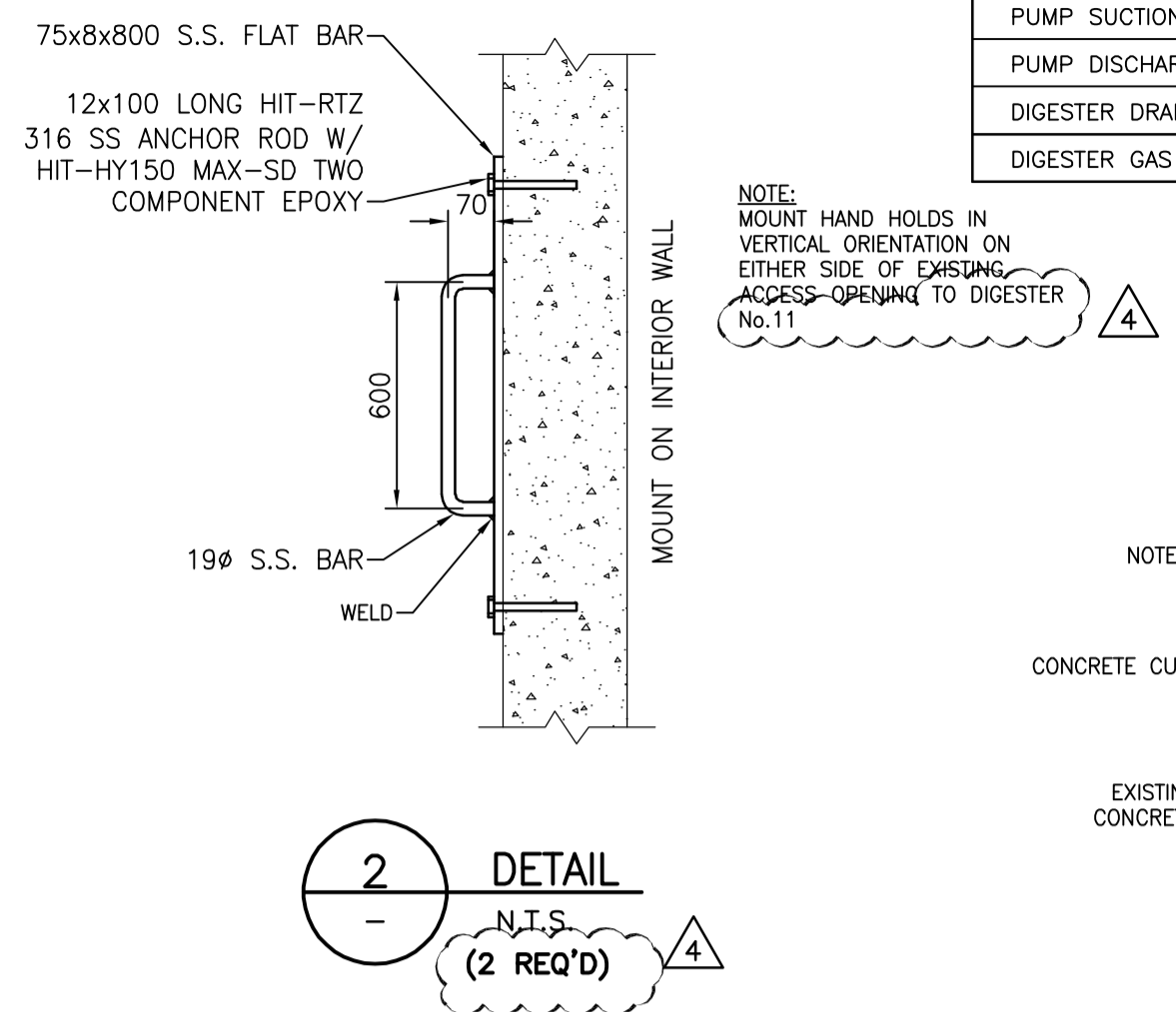


- NOTES**
- ANCHOR BOLTS: STAINLESS STEEL HILTI AS NOTED.
  - SUBMIT SHOP DRAWINGS FOR REVIEW PRIOR TO FABRICATION. ALL MISCELLANEOUS METAL IS STAINLESS STEEL UNLESS NOTED OTHERWISE.
  - ALL LADDERS TO BE INSTALLED AFTER ALL CONCRETING AND TANK COATINGS ARE COMPLETE.
  - REFER TO STRUCTURAL DRAWING 1-0101D-S1004-001 FOR CURB DETAILS.

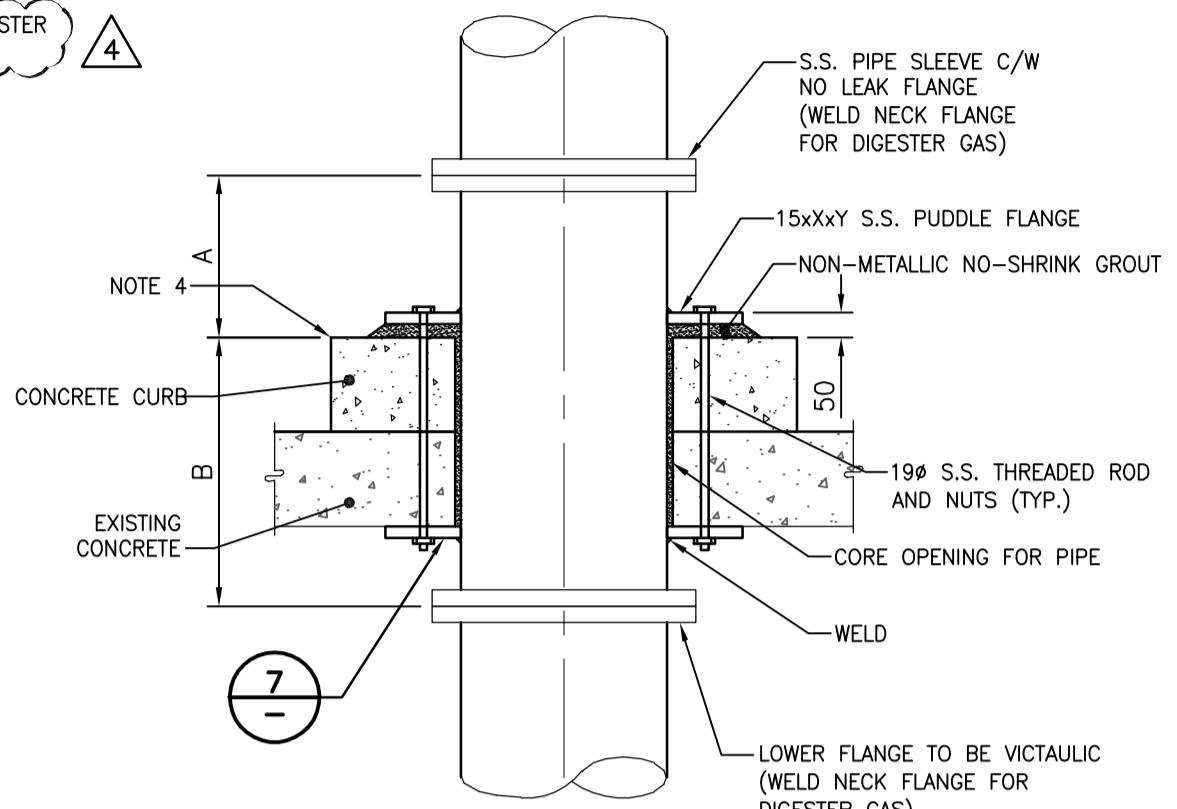
| PIPE DESCRIPTION  | SIZE | QUANTITY | LENGTH A | LENGTH B | LENGTH X | LENGTH Y |
|-------------------|------|----------|----------|----------|----------|----------|
| PUMP SUCTION      | 600# | 1        | 215      | 500      | 800      | 800      |
| PUMP DISCHARGE    | 500# | 1        | 215      | 300      | 700      | 700      |
| DIGESTER DRAIN    | 200# | 1        | 215      | 300      | 400      | 400      |
| DIGESTER GAS PIPE | 300# | 1        | 300      | -        | 500      | 500      |



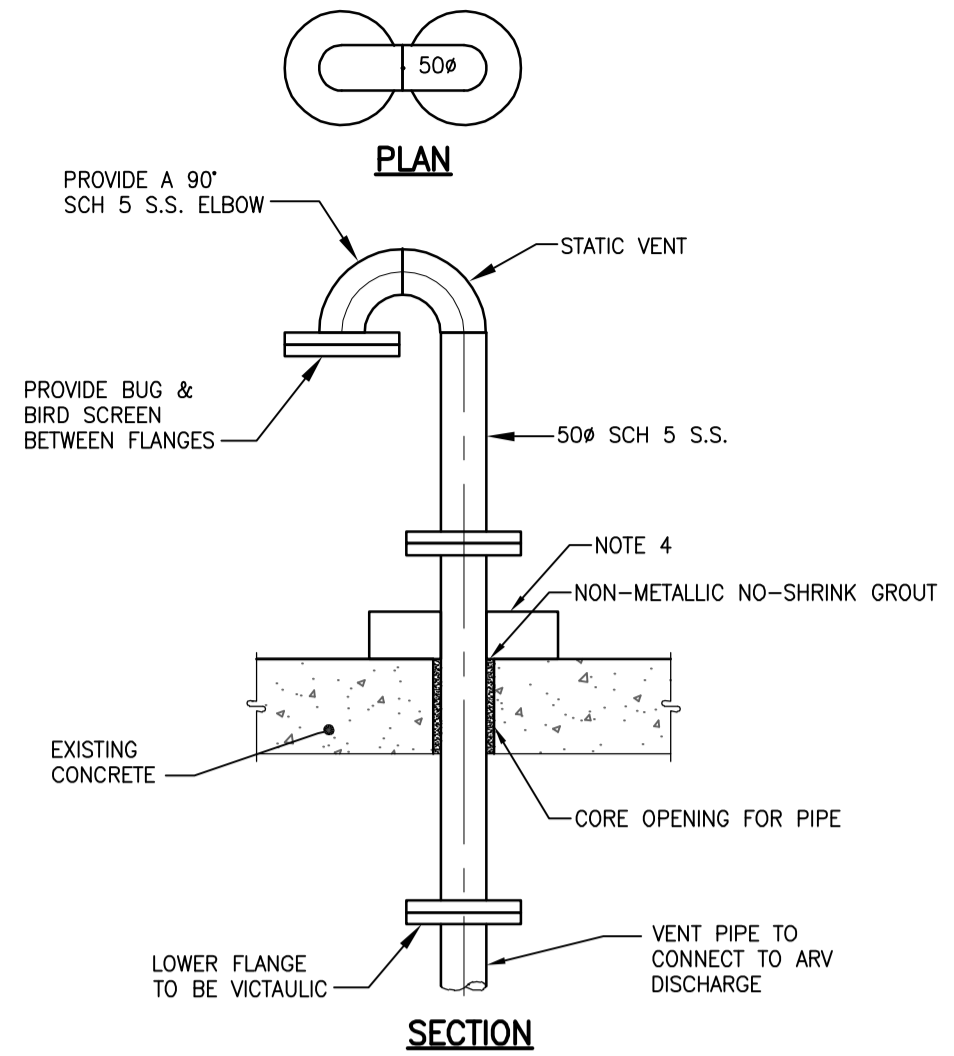
**1** DETAIL  
-  
1:20  
(3 REQ'D)  
NOTE: TO BE TYPE 316 STAINLESS STEEL



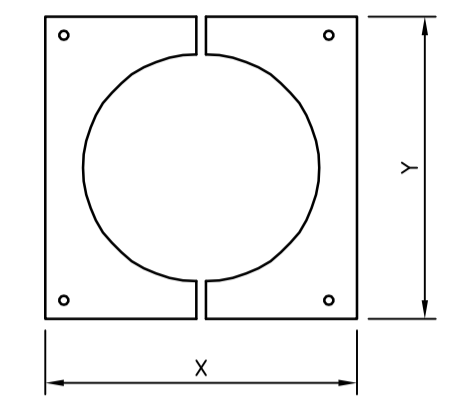
**2** DETAIL  
-  
N.T.S.  
(2 REQ'D)



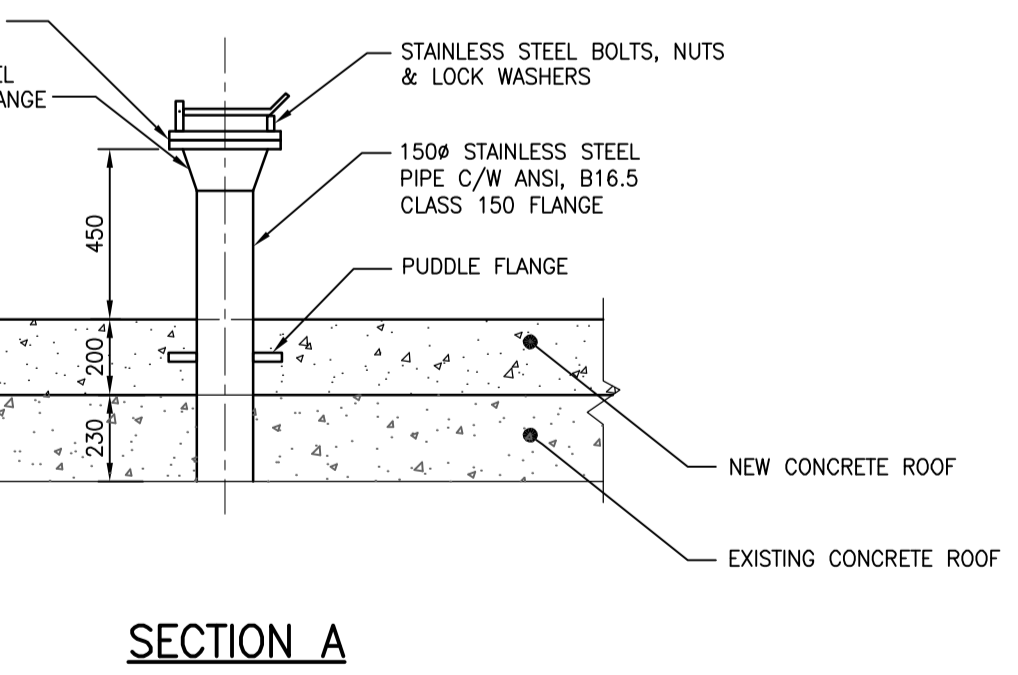
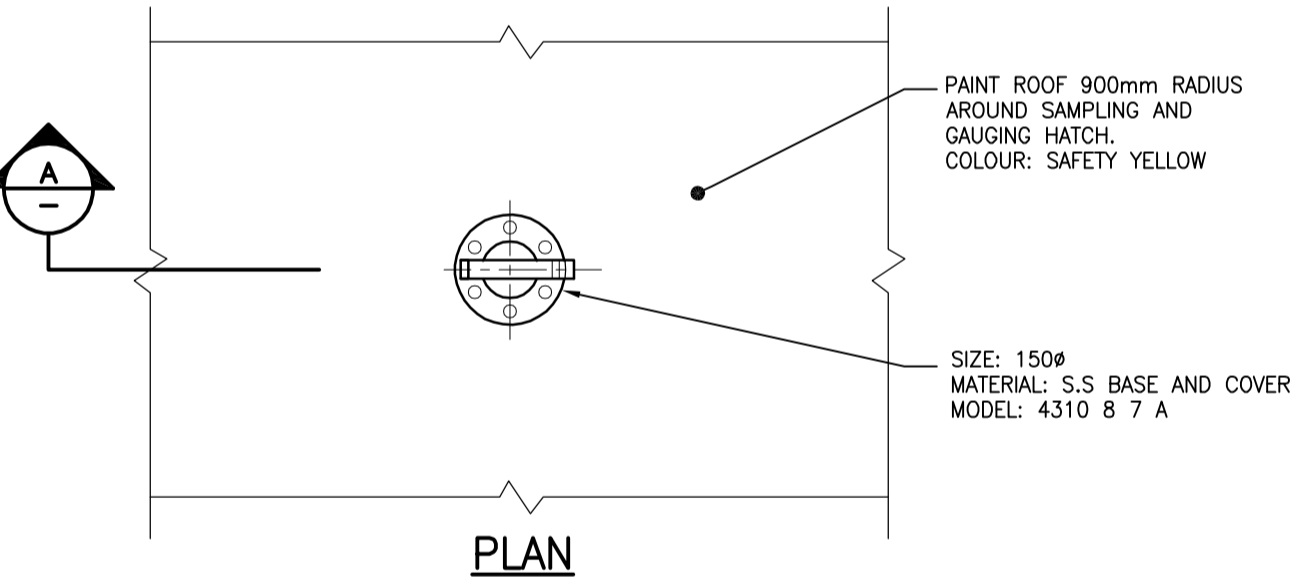
**3** DETAIL  
-  
N.T.S.  
(3 REQ'D)



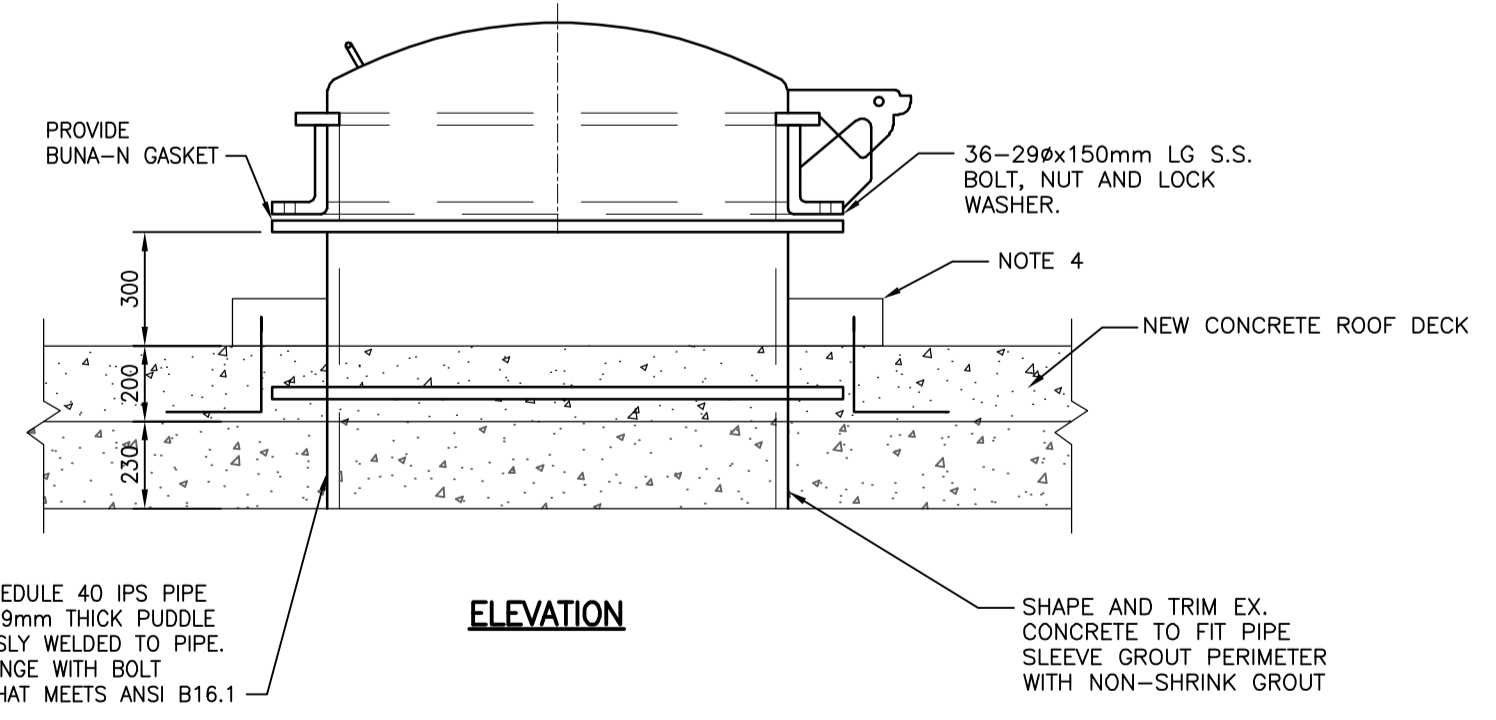
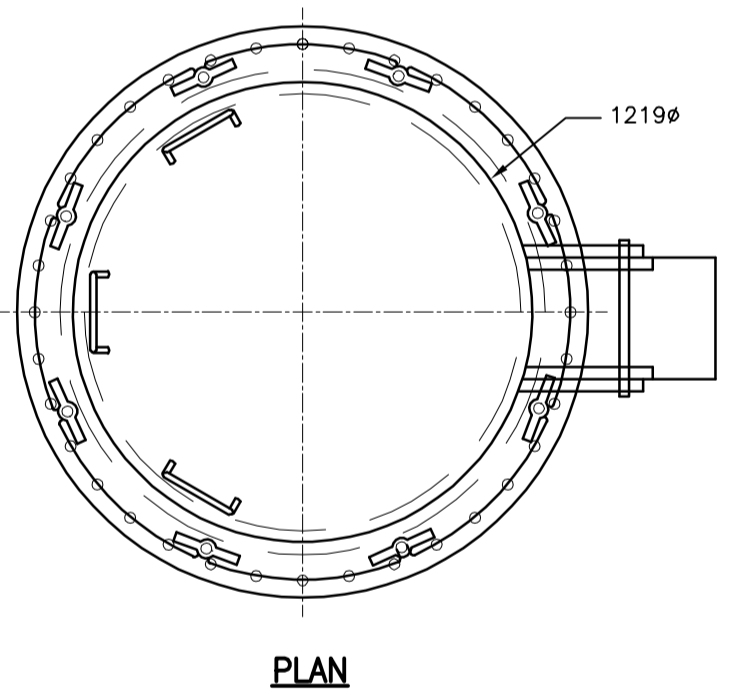
**4** DETAIL  
-  
N.T.S.  
(2 REQ'D)



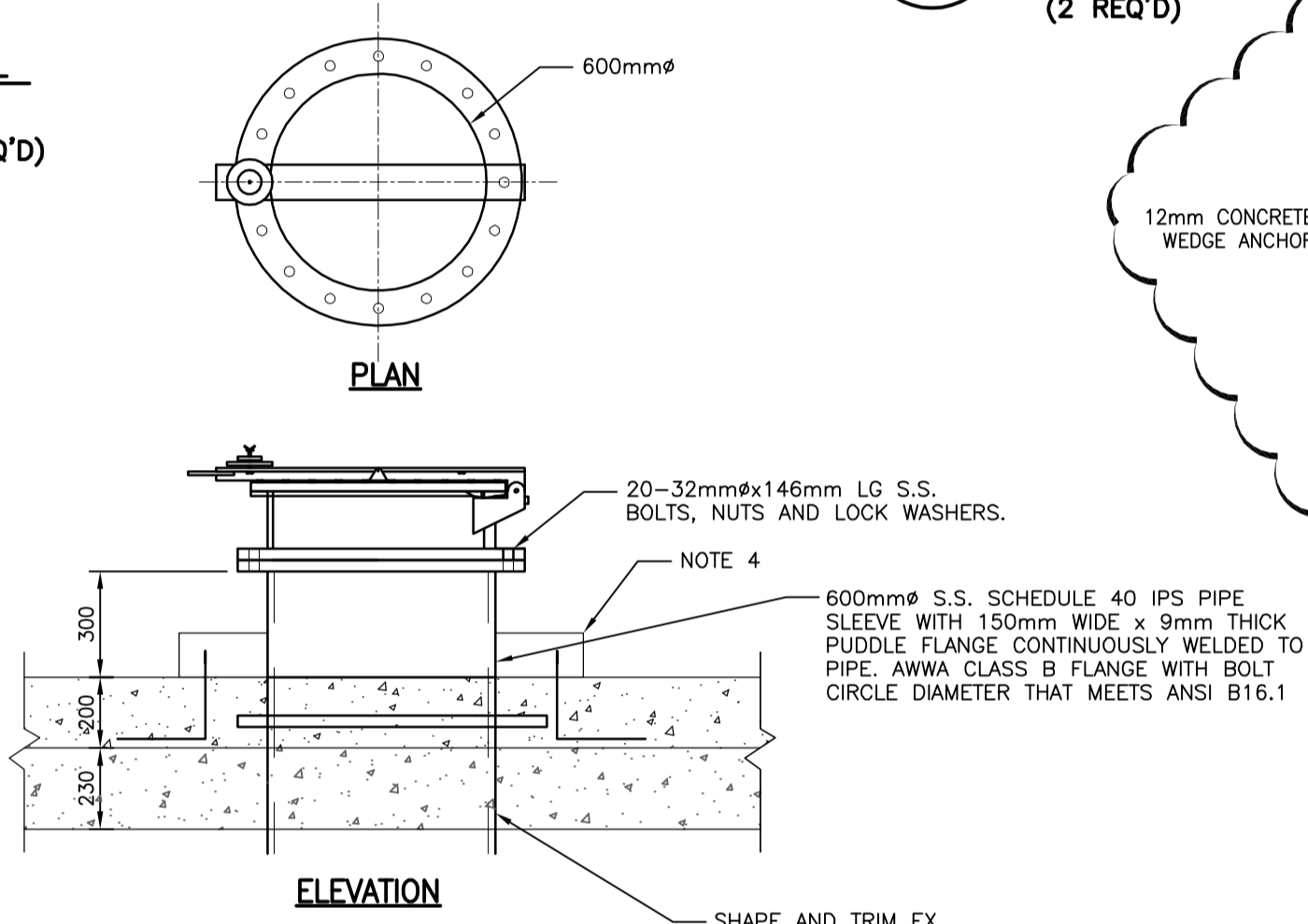
**5** PUDDLE FLANGE DETAIL  
-  
1:20



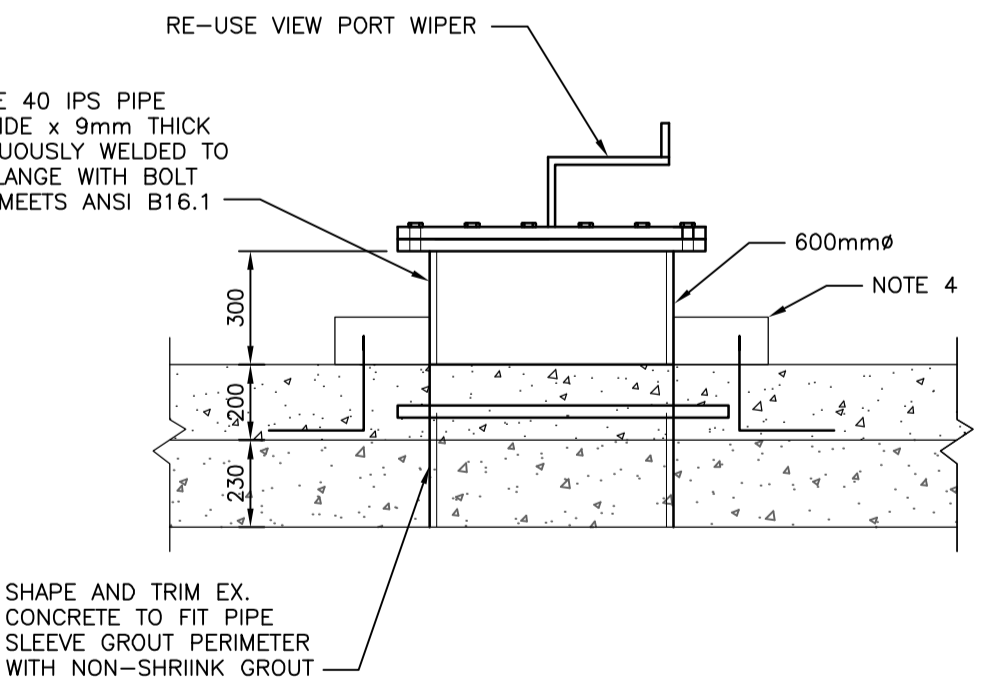
**6** DETAIL  
-  
1:20



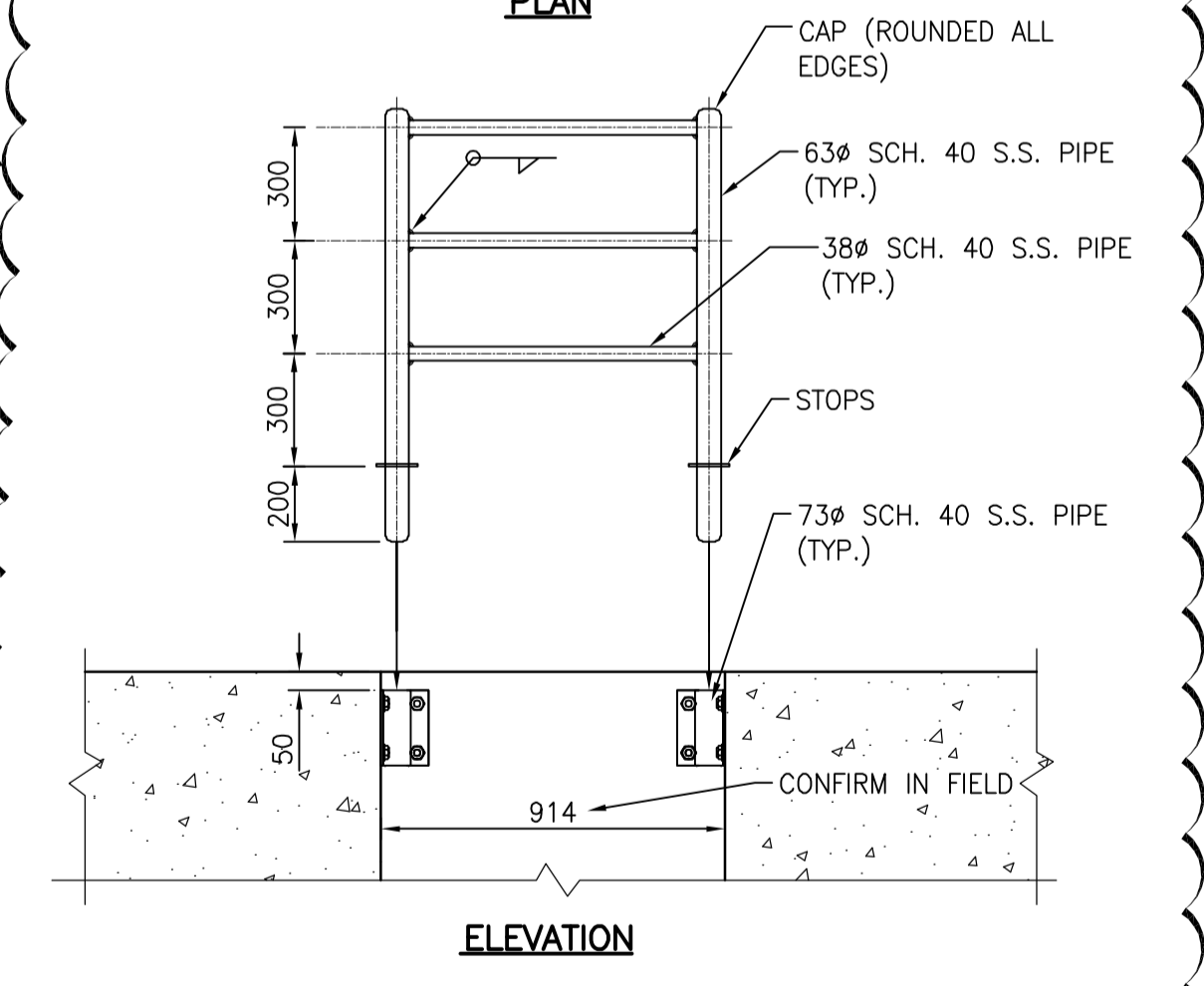
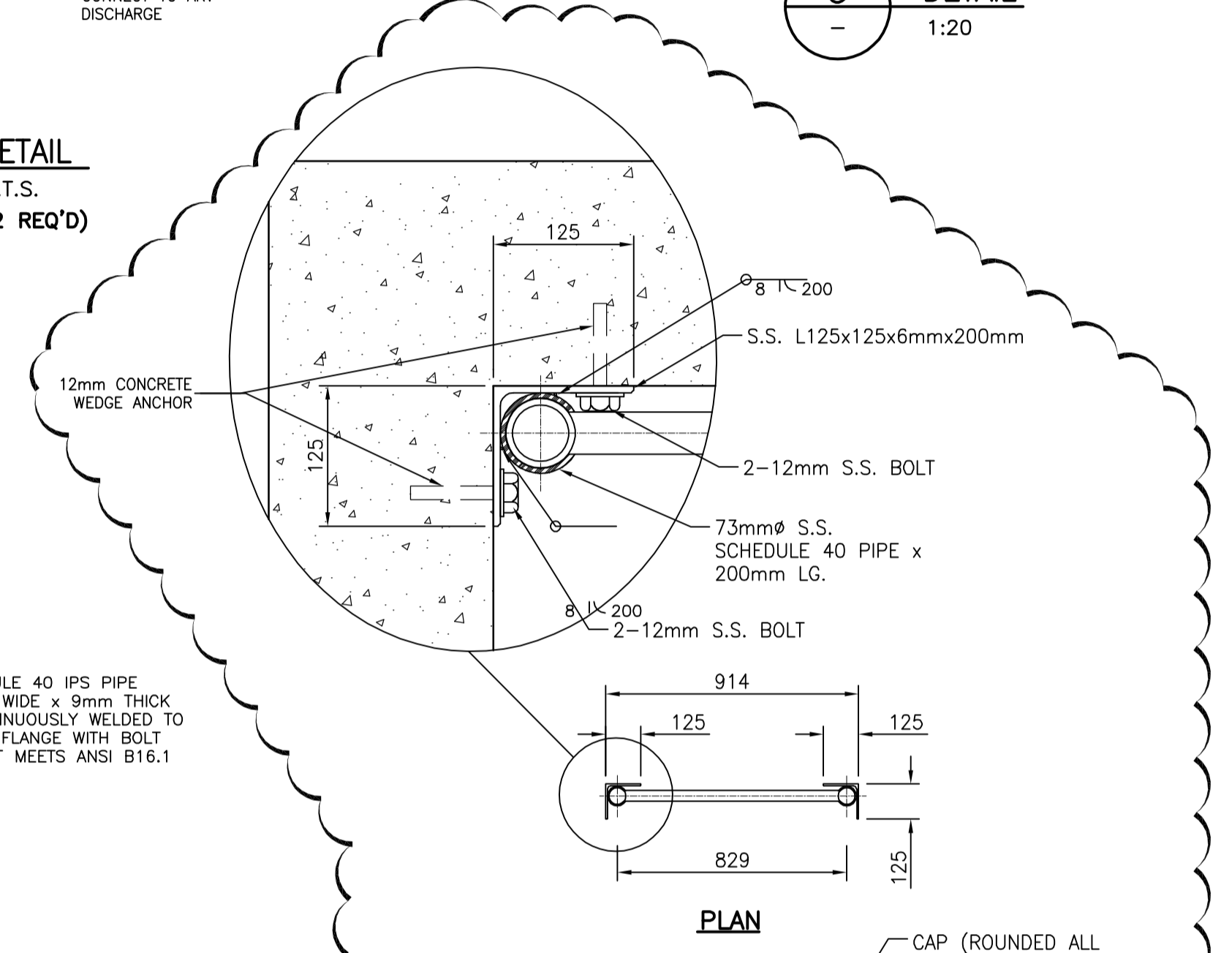
**7** ROOF MANHOLE COVER W/SELF-LOCKING PEDAL DETAIL  
-  
1:20



**8** EMERGENCY RELIEF MANHOLE COVER DETAIL  
-  
1:20



**9** ROOF VIEW PORT DETAIL  
-  
1:20



**10** REMOVABLE GRAB BAR  
-  
1:20  
NOTE: PROVIDED RUBBER CAPS TO SEAL ANCHORS WHEN HAND HOLD IS REMOVED

|               |                       |          |        |      |          |
|---------------|-----------------------|----------|--------|------|----------|
| B.M. ELEV.    |                       |          |        |      |          |
|               |                       |          |        |      |          |
|               |                       |          |        |      |          |
|               |                       |          |        |      |          |
| 4.            | ISSUED FOR ADDENDUM 3 | 12.11.23 | J.R.B. |      |          |
| 3.            | ISSUED FOR TENDER     | 12.11.01 | S.K.B. |      |          |
| 2.            | ISSUED FOR 95% REVIEW | 12.09.12 | S.K.B. |      |          |
| 1.            | ISSUED FOR 60% REVIEW | 12.07.27 | S.K.B. |      |          |
| NO. REVISIONS |                       | DATE     | BY     | DATE | 12.07.03 |

**Stantec Consulting Ltd.**  
905 Waverley Street, Winnipeg, Manitoba  
Tel 204-489-5900 Fax 204-453-9012

ENGINEER'S SEAL  
ORIGINAL SEALED BY  
A.H. BEGHIN  
P. ENG.  
12/10/31

**THE CITY OF WINNIPEG**  
WATER AND WASTE DEPARTMENT  
Winnipeg  
NORTH END WATER POLLUTION CONTROL CENTRE  
REHABILITATION OF DIGESTER No. II AND  
SLUDGE HOLDING TANK No. 5 AND 7  
MISCELLANEOUS MECHANICAL AND METAL DETAILS  
CITY DRAWING NUMBER  
**1-OIOID-MOOIO-001**  
SHEET 16 OF 29

**METRIC**  
WHOLE NUMBERS INDICATE MILLIMETRES  
DECIMALIZED NUMBERS INDICATE METRES