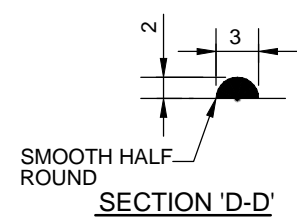
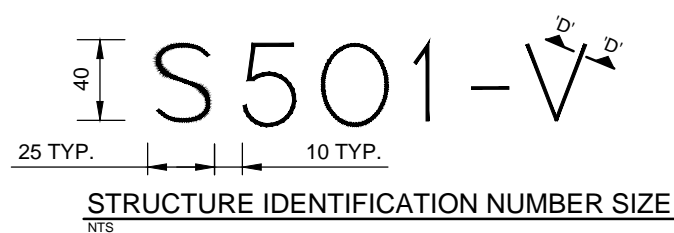


NOTES
1. PROVIDE "RAISED" IDENTIFICATION NO. WITH WELDING ELECTRODE FOR THE SIGN STRUCTURE.
2. GRIND ALL SHARP POINTS AND EDGES.



BILL OF MATERIALS		
MK	QTY	DESCRIPTION
1	1	DODECAGONAL SHAFT 355 A/F x 6.4 THICK PLATE
2	1	BACK-UP STRIP 38 x 6
3	1	BASE PLATE 600 DIA. x 38 THICK
4	1	TOP PLATE 12 THICK
5	2	DODECAGONAL GUSSET PLATE 8 THICK
6	1	DODECAGONAL ARM 355 A/F TO 125 A/F x 6.4 THICK PLATE
7	1	DODECAGONAL END PLATE 125 A/F x 6.4 THICK
8	1	BACK-UP STRIP 38 x 5
9	2	FLANGE PLATE 32 THICK
10	16	25 DIA. BOLTS C/W NUT & 2 WASHERS, ASTM A325 GALV.
11	2	SIDE GUSSET PLATE 20 THICK
12	1	GUSSET PLATE 12 THICK
13	1	GUSSET PLATE 12 THICK
		HANDHOLE MARK H1
14	1	COVER PLATE 11 GA. x 160x 340 (A569)
15	1	REINFORCING RING 8 x 65 x 830
* 16	2	CLAMP BAR 6 x 40 x 180
* 17	2	10 DIA. x 140 BOLT S/S (TYPE 316)
* 18	1	GROUND STUD ASSEMBLY 10 DIA. x 40
		HANDHOLE MARK H2
19	1	COVER PLATE 11 GA. x 130 x 220 (A569)
20	1	REINFORCING RING 8 x 65 x 555
* 21	1	CLAMP BAR 6 x 40 x 150
* 17	1	10 DIA. x 140 BOLT S/S (TYPE 316)
* 18	1	GROUND STUD ASSEMBLY 10 DIA. x 40

***NOTES:**
1. MARK NO. 16 & 21 C/W 8-DIA. PUNCHED 10 N.C. TAPPED AT THE CENTER OF PLATE.
2. MARK NO. 17 C/W CUP WASHER.
3. MARK NO. 18 C/W 2-10 DIA. HEX NUT, 2-TERMINAL WASHER. & 1-LOCKWASHER

GENERAL NOTES
1. **DESIGN DATA**
AASHTO STANDARD SPECIFICATIONS FOR STRUCTURAL SUPPORTS FOR HIGHWAY SIGNS, LUMINAIRES, AND TRAFFIC SIGNALS, 5TH EDITION, 2009.
DESIGN WIND LOAD = 1.44 kPa (30 PSF)
DESIGN ICE LOAD = 0.15 kPa (3 PSF)
2. ALL MATERIALS SHALL BE CSA G40.21 - 300W STRUCTURAL STEEL
3. ALL MATERIALS EXCEPT STAINLESS STEEL AND ALUMINUM SHALL BE HOT-DIP GALVANIZED IN ACCORDANCE WITH ASTM A123 TO A MIN. NET RETENTION OF 610 g/m²
4. INSTALL HOLES IN THE GUSSET PLATES FOR DRAINAGE DURING GALVANIZING AS DETAILED.
5. ALL AREAS OF DAMAGED GALVANIZING SHALL BE REPAIRED WITH SELF-FLUXING LOW TEMPERATURE, ZINC BASED ALLOY ROD OR SPRAY-ON COATING CALLED "ZINGA".
6. VERIFY ARM LENGTH PRIOR TO FABRICATION AFTER PILE INSTALLATION.
7. **SIGNS**
2 SIGN PLATES, MAXIMUM SIZE 915 x 915 mm EACH. SUPPLIED AND INSTALLED BY THE CITY OF WINNIPEG TRAFFIC SERVICES BRANCH.



NO.	REVISIONS	DATE	BY
2	ISSUED FOR ADDENDUM 1	09/13/12	CDW
1	ISSUED FOR TENDER	09/12/12	CDW

DESIGNED BY	CDW
DRAWN BY	JLD
CHECKED BY	SSR
APPROVED BY	
HOR. SCALE	NTS
VERTICAL	NTS
DATE	09/12/12



THE CITY OF WINNIPEG PUBLIC WORKS DEPARTMENT		CITY DRAWING NUMBER OHSS-12-05
STEEL OVERHEAD SIGN SUPPORT STRUCTURES - 2012 MAINTENANCE WORKS		SHEET 05 OF 07
STRUCTURE NO. S501 DETAILS		CONSULTANT DRAWING NUMBER