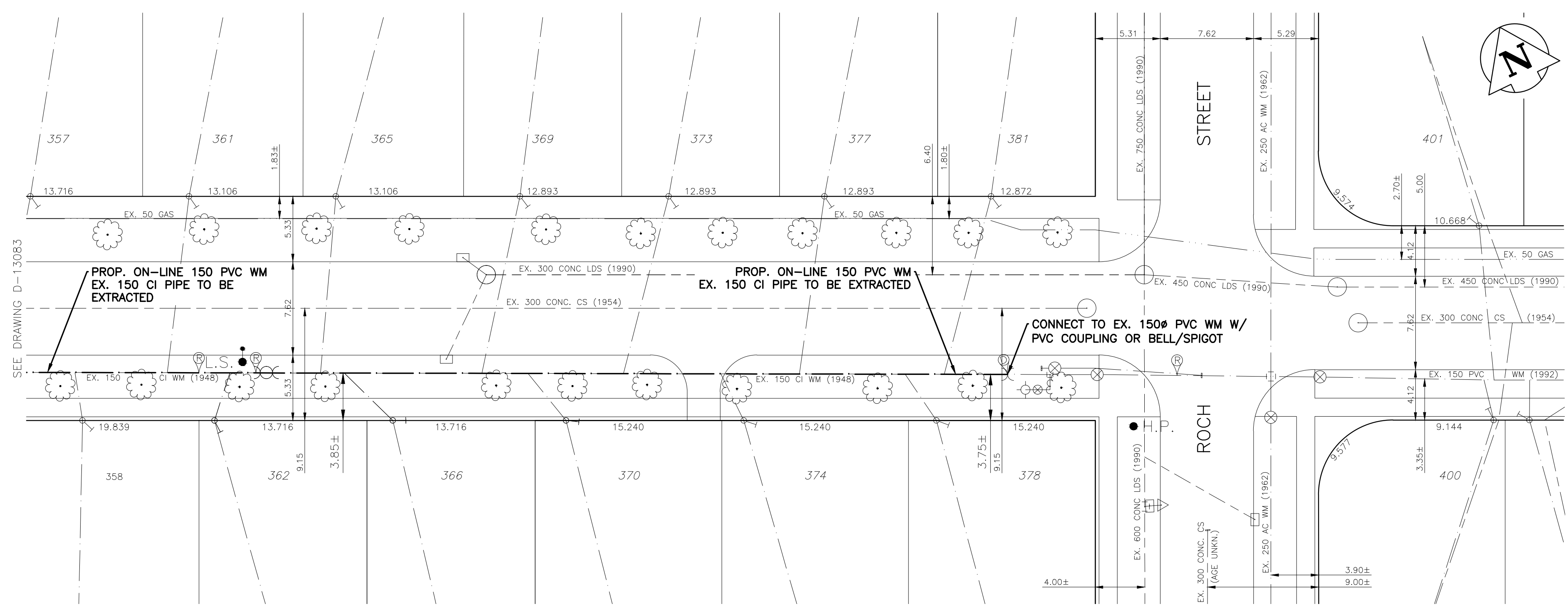
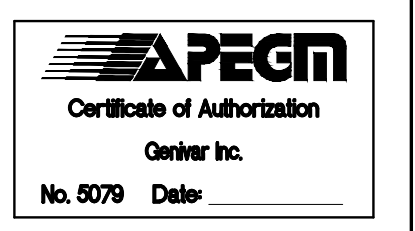


CHAINAGE ALONG SOUTH P OF DUNROBIN AVENUE
DUNROBIN AVENUE

HOUSE WATER SERVICE INFORMATION				
ADDRESS & NATURE	SIZE (mm) & TYPE	SHORT & LONG	CORP LOCATION	REMARKS
357 Dunrobin Ave. Residential	12 Copper	2.0 E W COR HSE LINE	3.5 E OF HYDT	
358 Dunrobin Ave. Residential	12 Copper	3.8 E W/H/L	9.8 E OF HYDT	
361 Dunrobin Ave. Residential	20 Copper	2.3 E WL 11.6 OUT	17.4 E OF HYDT	
362 Dunrobin Ave. Residential	12 Copper	RIGHT ON W/H/L	22.6 E OF HYDT	
365 Dunrobin Ave. Industrial	12 Copper	1.2 E W COR HSE LINE	29.9 E OF HYDT	
366 Dunrobin Ave. Residential	12 Copper	RIGHT ON W/H/L	31.4 E OF HYDT	
369 Dunrobin Ave. Residential	12 Copper	3.0 EWL OF HOUSE	50.0 W OF HYDT	
370 Dunrobin Ave. Residential	12 Copper	1.2 E W/H/L	46.6 W OF HYDT	
373 Dunrobin Ave. Residential	12 Copper	2.4 EWL OF HOUSE	38.4 W OF HYDT	
374 Dunrobin Ave. Industrial	12 Copper	1.5 WWL OF HOUSE	30.8 W OF HYDT	
377 Dunrobin Ave. Residential	12 Copper	2.4 EWL OF HOUSE	24.1 W OF HYDT	
378 Dunrobin Ave. Residential	12 Copper	1.1 E/WBL	12.2 W/E HYDT	
381 Dunrobin Ave. Residential	12 Copper	3.4 EWL OF HOUSE 7.8 OUT	12.2 W OF HYDT	



- NOTES:**
- ALL GATE VALVES ARE CLOCKWISE TO OPEN WITH A RED OPERATING NUT UNLESS NOTED OTHERWISE.
 - WATERMAIN TO BE INSTALLED BY TRENCHLESS METHODS.
 - BACKFILL IS CLASS 5 WITHIN BOULEVARD AND CLASS 3 WHEN WITHIN 1.0m OF PAVEMENT OR SIDEWALK.
 - WATER SERVICES ARE 19mm UNLESS OTHERWISE NOTED.
 - MINIMUM COVER TO TOP OF WATERMAIN SHALL BE 2.4m.
 - LOCATION OF ALL SERVICES TO BE CONFIRMED IN FIELD.
 - EXPOSE EXISTING WATERMAIN TO CONFIRM DEPTH PRIOR TO CONSTRUCTION.
 - ALL LEAD AND CAST IRON SERVICES TO BE RENEWED TO PROPERTY LINE.
 - SERVICES TO BE RENEWED SHALL BE REPLACED FROM WATERMAIN TO PROPERTY LINE. ALL OTHERS TO BE RECONNECTED.



METRIC
WHOLE NUMBERS INDICATE MILLIMETRES
DECIMALIZED NUMBERS INDICATE METRES

"Description of property limits, and existing and/or proposed features relative to these limits as shown on this drawing do not represent a Legal Survey. GENIVAR makes no representation or guarantee that the property limit information is accurate. GENIVAR accepts no responsibility for damages, if any, suffered by any third party as a result of decisions made or actions based on this drawing."

---	WATERMAIN	---	ANODE	---	WATERMAIN	---
○	HYDRANT	●	REDUCER	---	VALVE	---
○	VALVE	●	PLUG	---	LAND DRAINAGE SEWER	---
○	CURB STOP	●	TREE	---	WASTE WATER SEWER	---
---	WASTE WATER SEWER	---	LAMP STANDARD	---	CENTERLINE	---
---	LAND DRAINAGE SEWER	---	GAS	---		
---	C.B. LEAD	---	HYDRO	---		
○	MANHOLE	●	M.T.S.	---		
□	CATCH BASIN	■	TRAFFIC SIGNAL	---		
---	TEE	---	CONCRETE/ASPHALT	---		
---	BEND	---	SIDEWALK	---		
---	EXISTING	---	EXISTING	---	LEGEND - PROFILE	---
---	LEGEND - PLAN	---	PROPOSED	---	EXISTING	---
---	PROPOSED	---	PROPOSED	---	PROPOSED	---

LOCATION APPROVED
UNDERGROUND STRUCTURES

SUPV. U/G STRUCTURES COMMITTEE DATE

NOTE:
LOCATION OF UNDERGROUND STRUCTURES AS SHOWN ARE BASED ON THE BEST INFORMATION AVAILABLE BUT NO GUARANTEE IS GIVEN THAT ALL EXISTING UTILITIES ARE SHOWN OR THAT THE GIVEN LOCATIONS ARE EXACT. CONFIRMATION OF EXISTENCE AND EXACT LOCATION OF ALL SERVICES MUST BE OBTAINED FROM THE INDIVIDUAL UTILITIES BEFORE PROCEEDING WITH CONSTRUCTION.

B.M. ELEV.	CWBM 27-017	230.204
NO.	REVISIONS	DATE BY
1	DESIGN REVIEW W&W	APR/13 P.R.

GENIVAR
10 PRAIRIE WAY WINNIPEG, MANITOBA R2J 3J8
PH: (204)-477-6650 FAX: (204)-474-2864

DESIGNED BY P.R. CHECKED BY S.M.
DRAWN BY P.R. APPROVED BY I.McK.
HR. SCALE: 1:250
VERT. SCALE: 1:50
13 APRIL 2013

ENGINEERS SEAL
PROVINCE OF MANITOBA
REGISTERED PROFESSIONAL ENGINEER
I. G. MCKINNON

CONSULTANT DRAWING NO.
131-12754-00-05

THE CITY OF WINNIPEG
WATER AND WASTE DEPARTMENT

2013 CAPITAL WORKS
WATERMAIN RENEWALS
DUNROBIN AVENUE
83M WWL OF ROCH STREET TO
7M WWL OF ROCH STREET

SHEET 2 OF 2
CITY DRAWING NO.
D-13120