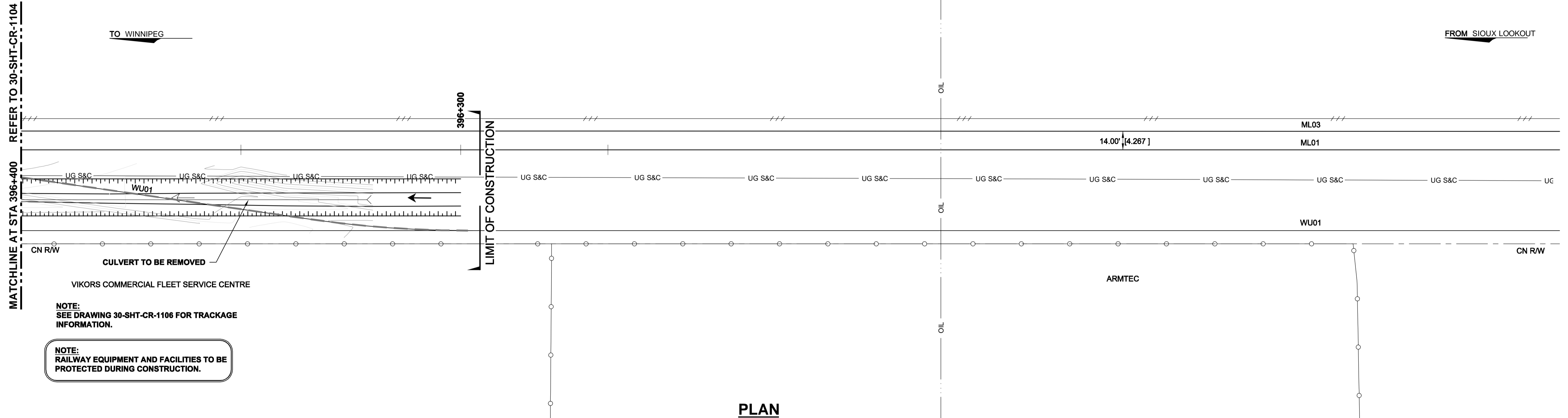
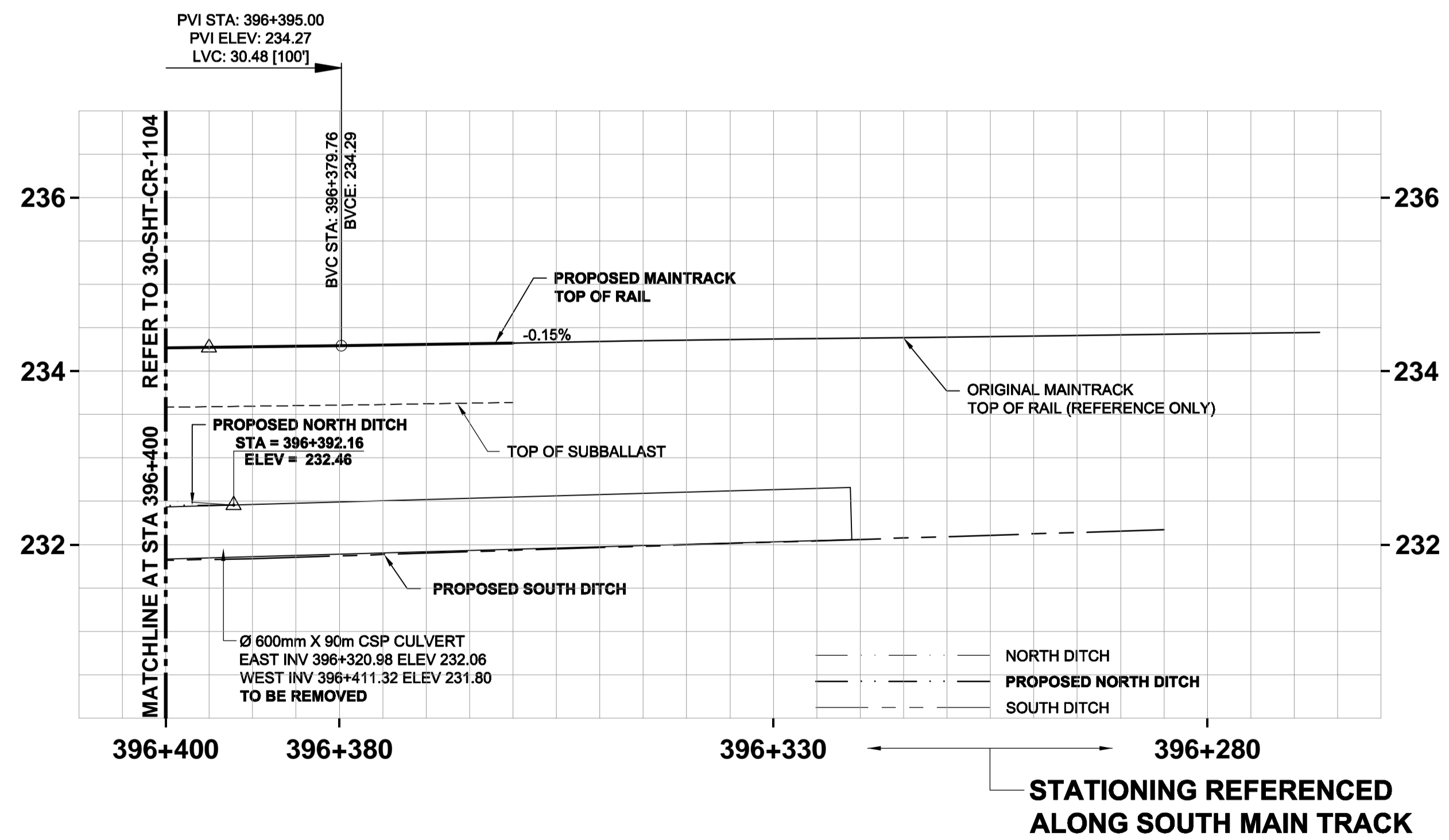
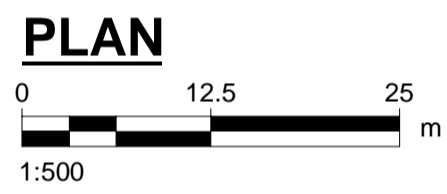


KEY PLAN



NOTE:  
SEE DRAWING 30-SHT-CR-1106 FOR TRACKAGE  
INFORMATION.

NOTE:  
RAILWAY EQUIPMENT AND FACILITIES TO BE  
PROTECTED DURING CONSTRUCTION.



STATIONING REFERENCED  
ALONG SOUTH MAIN TRACK

**APEGM**  
Certificate of Authorization  
AECOM Canada Ltd.  
No. 4671 Date: 2013/12/10  
BID OPPORTUNITY NO. 712-2013

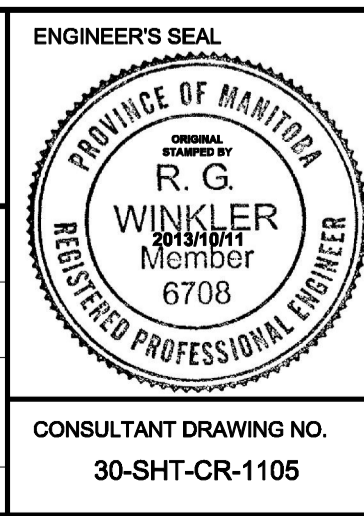
LOCATION APPROVED  
UNDERGROUND STRUCTURES

SUPV. U/G STRUCTURES COMMITTEE DATE

NOTE:  
LOCATION OF UNDERGROUND STRUCTURES AS SHOWN ARE BASED ON THE BEST INFORMATION AVAILABLE. BUT NO GUARANTEE IS GIVEN THAT ALL EXISTING UTILITIES ARE SHOWN OR THAT THE GIVEN LOCATIONS ARE EXACT. CONFIRMATION OF EXISTENCE AND EXACT LOCATION OF ALL SERVICES MUST BE OBTAINED FROM THE INDIVIDUAL UTILITIES BEFORE PROCEEDING WITH CONSTRUCTION.

B.M. ELEV.	NO.	REVISIONS	DATE	BY
	1	Issued For Addendum	13/12/10	RCP
	0	Issued For Tender	13/10/15	RCP

<b>AECOM</b>	
DESIGNED BY: BRP	CHECKED BY: BJM
DRAWN BY: WD	APPROVED BY: RCP
HOR. SCALE: 1:500	RELEASED FOR CONSTRUCTION BY:
VERTICAL: 1:50	DATE: 2013/12/10



**THE CITY OF WINNIPEG PUBLIC WORKS DEPARTMENT**

PLESSIS ROAD TWINNING AND GRADE SEPARATION AT CN REDDITT SUBDIVISION CONTRACT 3

SHOOFLY REMOVAL AND FINAL CONFIGURATION  
PLAN AND PROFILE  
Sta. 396+280 to Sta. 396+400

CITY DRAWING NUMBER: U238-2014-2205  
SHEET 05 OF 14  
CR-1105