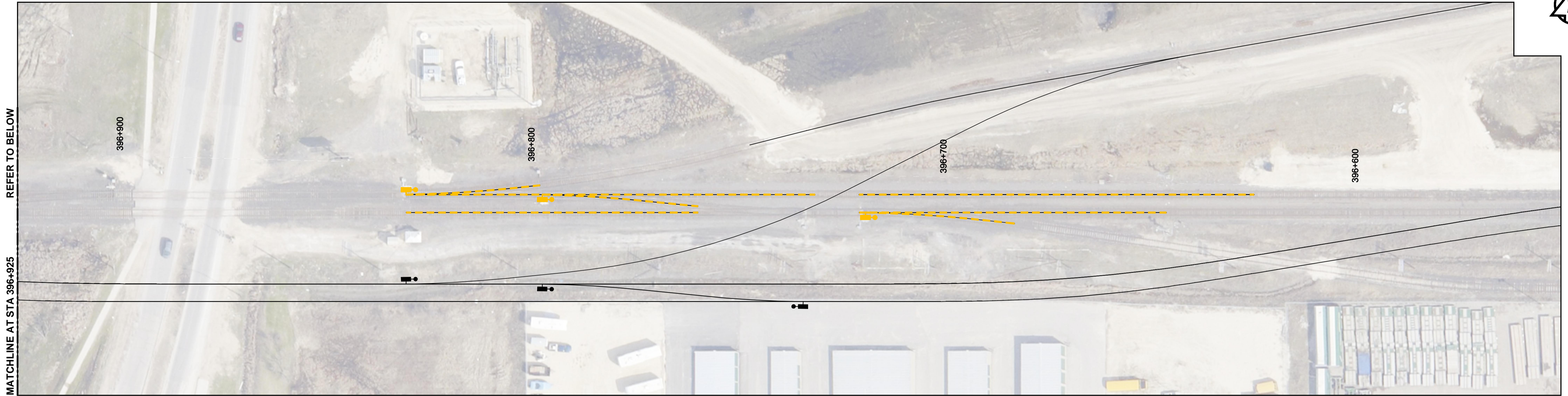
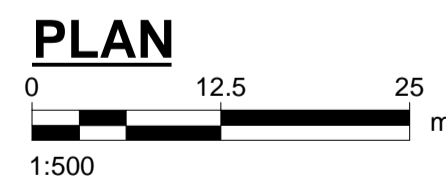
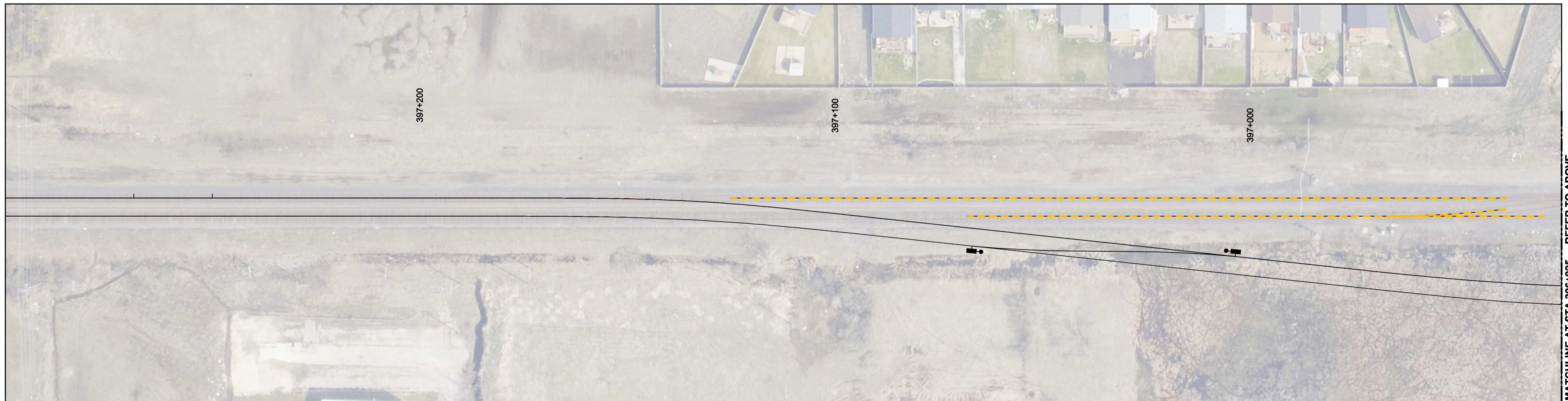


EAST SIDE OF STAGE A



WEST SIDE OF STAGE A



GENERAL NOTES:

1. ALL DIMENSIONS ARE METRIC UNLESS NOTED OTHERWISE.
2. ALL PROPERTY LINES ARE PROVIDED FOR INFORMATION PURPOSES ONLY.
3. ALL NEW TURNOUTS COMPLETE WITH TEMPORARY SWITCH STAND.
4. ALL TRACK PANELS COMPLETE AND 39' LONG.
5. ALL LENGTHS SHOWN ARE APPROXIMATE, CONFIRM PRIOR TO CONDUCTING WORK.

**APEGM**  
 Certificate of Authorization  
 AECOM Canada Ltd.  
 No. 4671 Date: 2013/12/10  
 BID OPPORTUNITY NO. 712-2013

LEGEND

- REMOVED TRACK: Dashed yellow line
- RELINED TRACK: Dashed green line
- PROPOSED TRACK: Solid red line
- CONSTRUCTED TRACK: Solid blue line
- PROPOSED PS: Red circle with dot
- EXISTING PS: Black circle with dot
- NEW PS: Blue circle with dot
- REMOVE PS: Yellow circle with dot
- PROPOSED ACCESS ROAD: Dashed black line
- EDGE ACCESS ROAD PLANKS: Dashed black line

LOCATION APPROVED UNDERGROUND STRUCTURES

SUPV. U/G STRUCTURES COMMITTEE DATE

NOTE:  
 LOCATION OF UNDERGROUND STRUCTURES AS SHOWN ARE BASED ON THE BEST INFORMATION AVAILABLE. BUT NO GUARANTEE IS GIVEN THAT ALL EXISTING UTILITIES ARE SHOWN OR THAT THE GIVEN LOCATIONS ARE EXACT. CONFIRMATION OF EXISTENCE AND EXACT LOCATION OF ALL SERVICES MUST BE OBTAINED FROM THE INDIVIDUAL UTILITIES BEFORE PROCEEDING WITH CONSTRUCTION.

| B.M. ELEV. | NO. | REVISIONS           | DATE     | BY  |
|------------|-----|---------------------|----------|-----|
|            | 0   | Issued For Addendum | 13/12/10 | RCP |



|             |       |                               |            |
|-------------|-------|-------------------------------|------------|
| DESIGNED BY | BRP   | CHECKED BY                    | BJM        |
| DRAWN BY    | WD    | APPROVED BY                   | RCP        |
| HOR. SCALE: | 1:500 | RELEASED FOR CONSTRUCTION BY: |            |
| VERTICAL:   | 1:50  | DATE                          | 2013/12/10 |

ENGINEER'S SEAL  
 PROVINCE OF MANITOBA  
**R. G. WINKLER**  
 Member 6708  
 REGISTERED PROFESSIONAL ENGINEER  
 CONSULTANT DRAWING NO.  
 30-SHT-CR-7101

**THE CITY OF WINNIPEG**  
 PUBLIC WORKS DEPARTMENT

PLESSIS ROAD TWINNING AND GRADE SEPARATION AT CN REDDITT SUBDIVISION CONTRACT 3

SHOOFLY REMOVAL AND FINAL CONFIGURATION STAGING PLAN STAGE A

CITY DRAWING NUMBER U238-2014-2271  
 SHEET 10 OF 14  
**CR-7101**