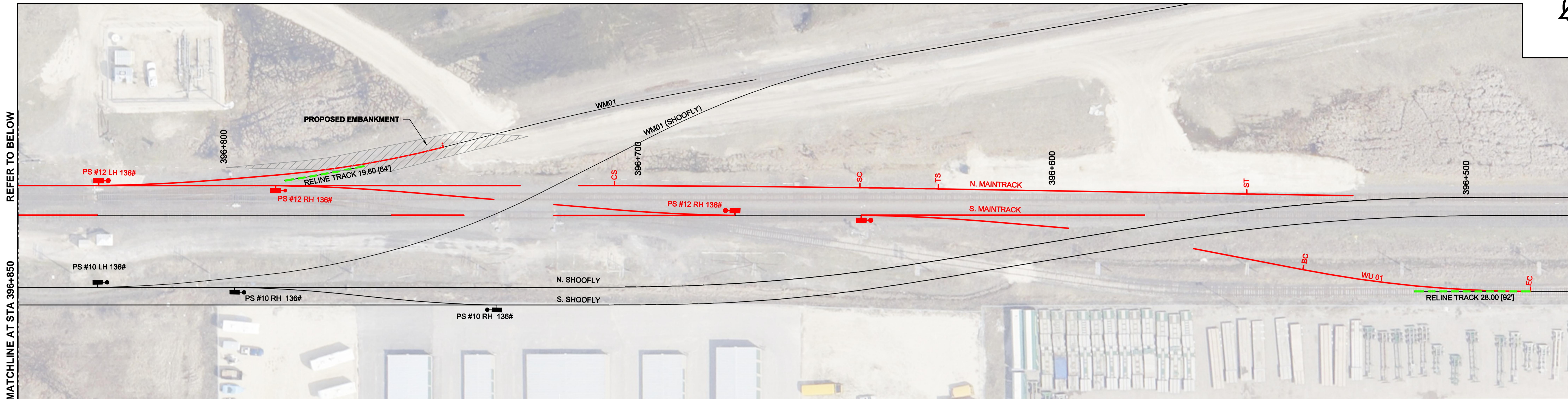
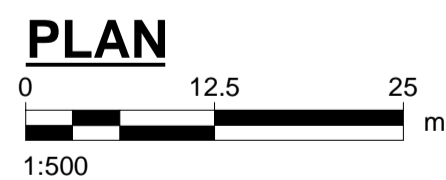
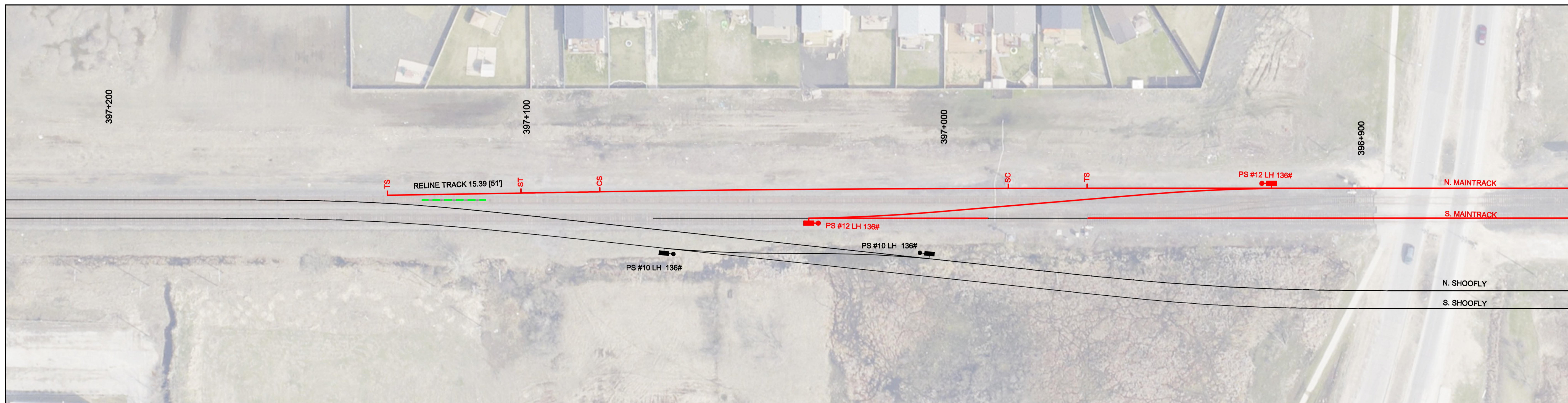


EAST SIDE OF STAGE B



WEST SIDE OF STAGE B



CONSTRUCTION STAGING

STAGE B

- i. COMPLETE EXISTING WM01 TRACK EMBANKMENT WITH APPROVED FILL / SUBBALLAST. CONSTRUCT FINAL NORTH AND SOUTH MAINTRACK TO TIE IN LIMITS INCLUDING ON BRIDGE, BALLAST AND SURFACE.
- ii.
 - a. CONSTRUCT IN PLACE 2-#12 136# LH FOR WEST N. MAINTRACK TO S. MAINTRACK X-OVER.
 - b. CONSTRUCT IN PLACE 1-#12 136# LH FOR WM01 CONNECTION FROM N. MAINTRACK.
 - c. CONSTRUCT IN PLACE 2-#12 136# RH FOR NEW EAST N. MAINTRACK TO S. MAINTRACK X-OVER.
 - d. CONSTRUCT IN PLACE 1-#12 136# RH FOR NEW WU01 CONNECTION.

GENERAL NOTES:

1. ALL DIMENSIONS ARE METRIC UNLESS NOTED OTHERWISE.
2. ALL PROPERTY LINES ARE PROVIDED FOR INFORMATION PURPOSES ONLY.
3. ALL NEW TURNOUTS COMPLETE WITH TEMPORARY SWITCH STAND.
4. ALL TRACK PANELS COMPLETE AND 39' LONG.
5. ALL LENGTHS SHOWN ARE APPROXIMATE, CONFIRM PRIOR TO CONDUCTING WORK.



BID OPPORTUNITY NO. 712-2013

LEGEND

- REMOVED TRACK: Dashed yellow line
- RELINING TRACK: Dashed green line
- PROPOSED TRACK: Solid red line
- CONSTRUCTED TRACK: Solid blue line
- PROPOSED PS: Red square with dot
- EXISTING PS: Black square with dot
- NEW PS: Blue square with dot
- REMOVE PS: Yellow square with dot
- PROPOSED ACCESS ROAD: Dashed black line
- EDGE ACCESS ROAD PLANKS: Dashed black line

LOCATION APPROVED UNDERGROUND STRUCTURES

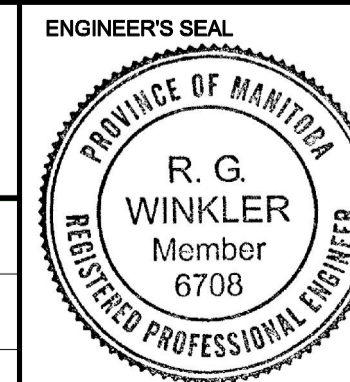
SUPV. U/G STRUCTURES COMMITTEE DATE

NOTE: LOCATION OF UNDERGROUND STRUCTURES AS SHOWN ARE BASED ON THE BEST INFORMATION AVAILABLE. BUT NO GUARANTEE IS GIVEN THAT ALL EXISTING UTILITIES ARE SHOWN OR THAT THE GIVEN LOCATIONS ARE EXACT. CONFIRMATION OF EXISTENCE AND EXACT LOCATION OF ALL SERVICES MUST BE OBTAINED FROM THE INDIVIDUAL UTILITIES BEFORE PROCEEDING WITH CONSTRUCTION.

B.M. ELEV.	NO.	REVISIONS	DATE	BY
	1	Issued For Addendum	14/01/22	RCP
	0	Issued For Addendum	13/12/10	RCP



DESIGNED BY	BRP	CHECKED BY	BJM
DRAWN BY	WD	APPROVED BY	RCP
HOR. SCALE:	1:500	RELEASED FOR CONSTRUCTION BY:	
VERTICAL:	1:50	DATE	2013/12/10



CONSULTANT DRAWING NO. 30-SHT-CR-7102



THE CITY OF WINNIPEG PUBLIC WORKS DEPARTMENT

PLESSIS ROAD TWINNING AND GRADE SEPARATION AT CN REDDITT SUBDIVISION CONTRACT 3

CITY DRAWING NUMBER U238-2014-2272 SHEET 11 OF 14

SHOOFLY REMOVAL AND FINAL CONFIGURATION STAGING PLAN STAGE B

CR-7102