

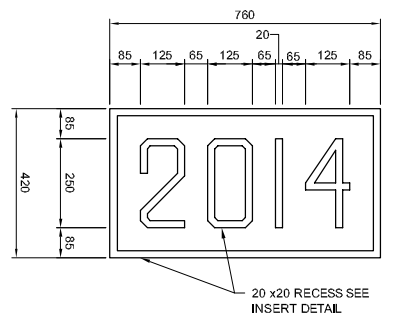
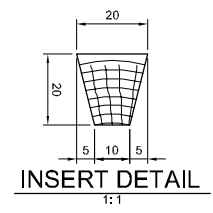
CONCRETE BARRIER AND ALUMINUM BARRIER RAIL LAYOUT
1:50

NOTE:
SHOWN WEST SIDE CONCRETE BARRIER ELEVATION
EAST SIDE CONCRETE BARRIER ELEVATION IS SIMILAR
BUT OPPOSITE HAND

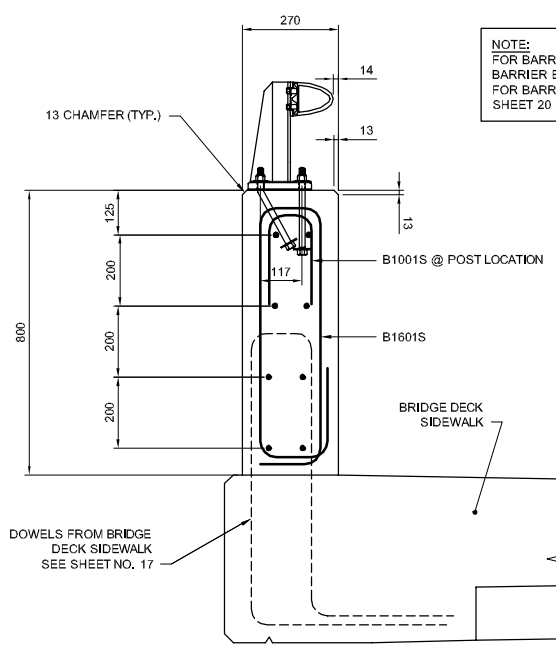
OUTLINE OF STRUCTURE
IDENTIFICATION DATE BEHIND
(LOCATION: NORTH END OF WEST SIDE
BARRIER FACING CREEK EMBANKMENT)
SEE THIS SHEET FOR DETAILS

CONCRETE BARRIER REINFORCEMENT				
PANEL TYPE	QUANTITY	NO. OF B1601S STIRRUP BARS	LONGITUDINAL BARS	EXTRA REBARS @ RAIL POST LOCATION
				P1
P2	2	24	4-B1604S EA. FACE	EA. OF 9 POST LOCATIONS
P3	3	20	4-B1605S EA. FACE	
CONSTRUCTION JOINT DOWELS				
NO. OF JOINT		REBAR DOWELS EACH JOINT		
7		3-B2501S		

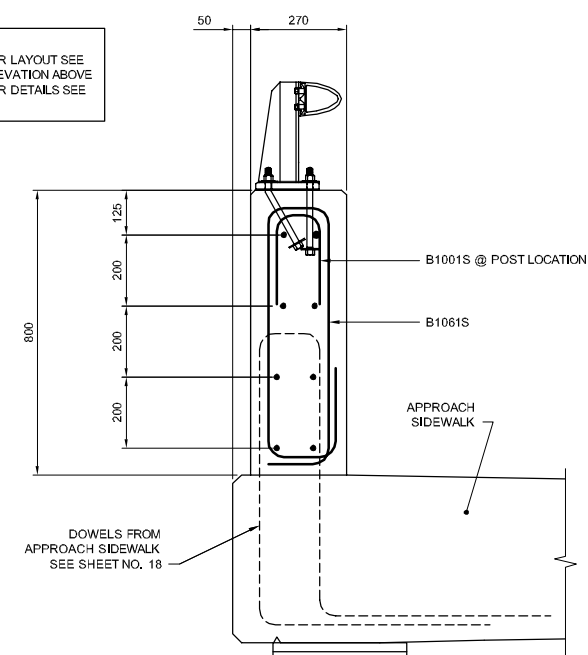
NOTE:
SHOWN WEST SIDE CONCRETE BARRIER REINFORCING
EAST SIDE CONCRETE BARRIER REINFORCING IS SIMILAR



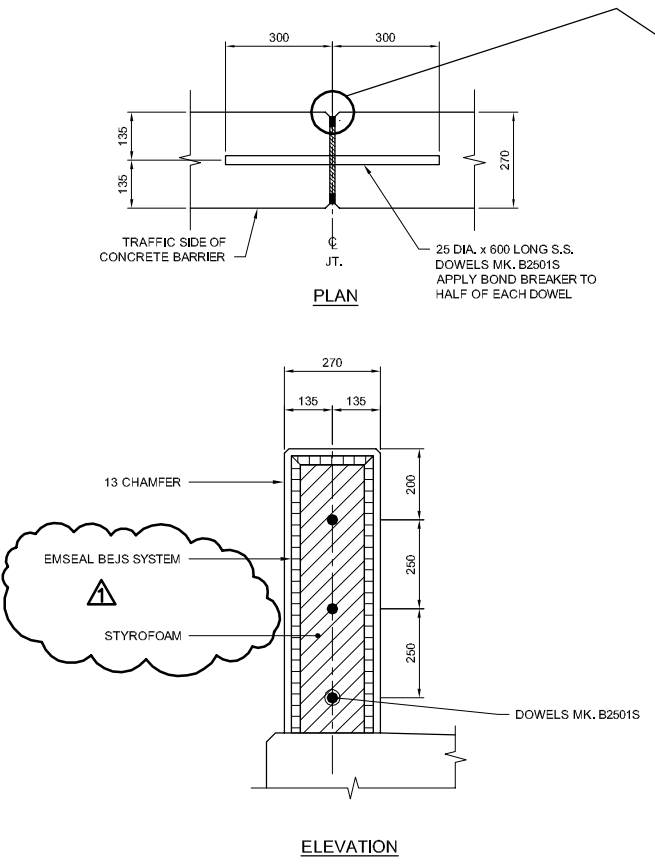
STRUCTURE IDENTIFICATION DATE
1:10



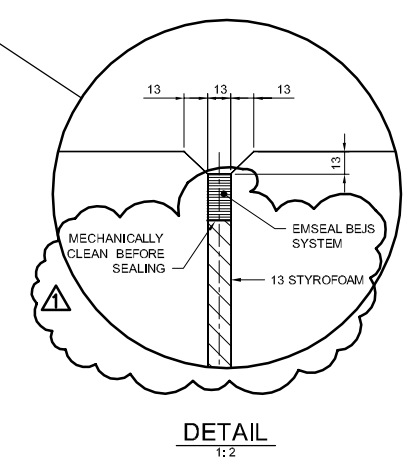
BRIDGE DECK CONCRETE BARRIER
1:10



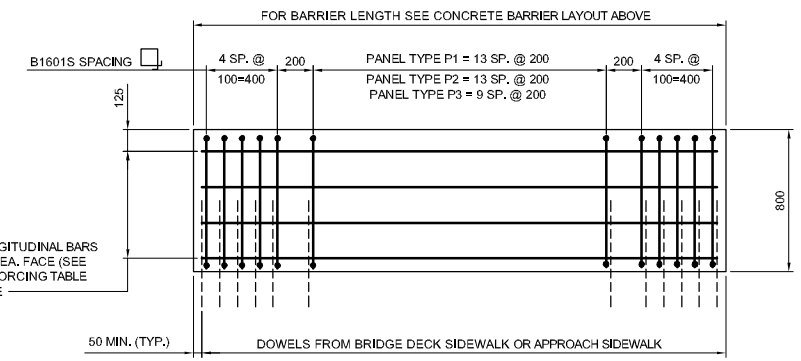
APPROACH CONCRETE BARRIER
1:10



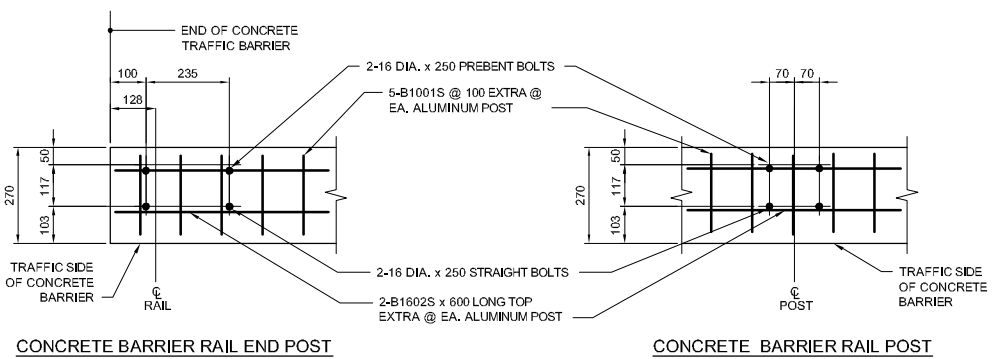
TYPICAL CONSTRUCTION JOINT DETAIL FOR CONCRETE BARRIER
1:10



DETAIL
1:2



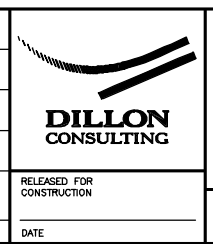
PANEL REINFORCING LAYOUT
1:20



TYPICAL ANCHOR BOLT LAYOUT FOR ALUMINUM RAIL POST
1:10



B.M. ELEV.	DESIGNED BY	SSR
	DRAWN BY	NBG
	CHECKED BY	CDW
	APPROVED BY	MBL
	HOR. SCALE	AS SHOWN
	VERTICAL	
NO.	REVISIONS	DATE BY
1	ADDENDUM NO. 2	13/11/13 CDW
0	ISSUED FOR TENDER	13/11/07 SSR



THE CITY OF WINNIPEG PUBLIC WORKS DEPARTMENT

RECONSTRUCTION OF THE ST. JAMES STREET BRIDGE OVER OMAND'S CREEK

CITY DRAWING NUMBER B126-13-19

SHEET 19 OF 26

CONSULTANT DRAWING NUMBER

13-7555

G:\CAD\137555\09-Structure\01-Contract\137555-09-BARRIER-RAILING-COM.dwg