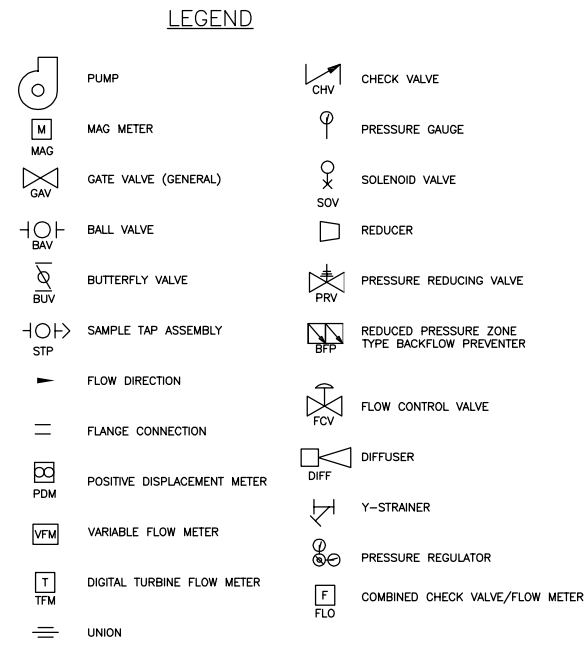
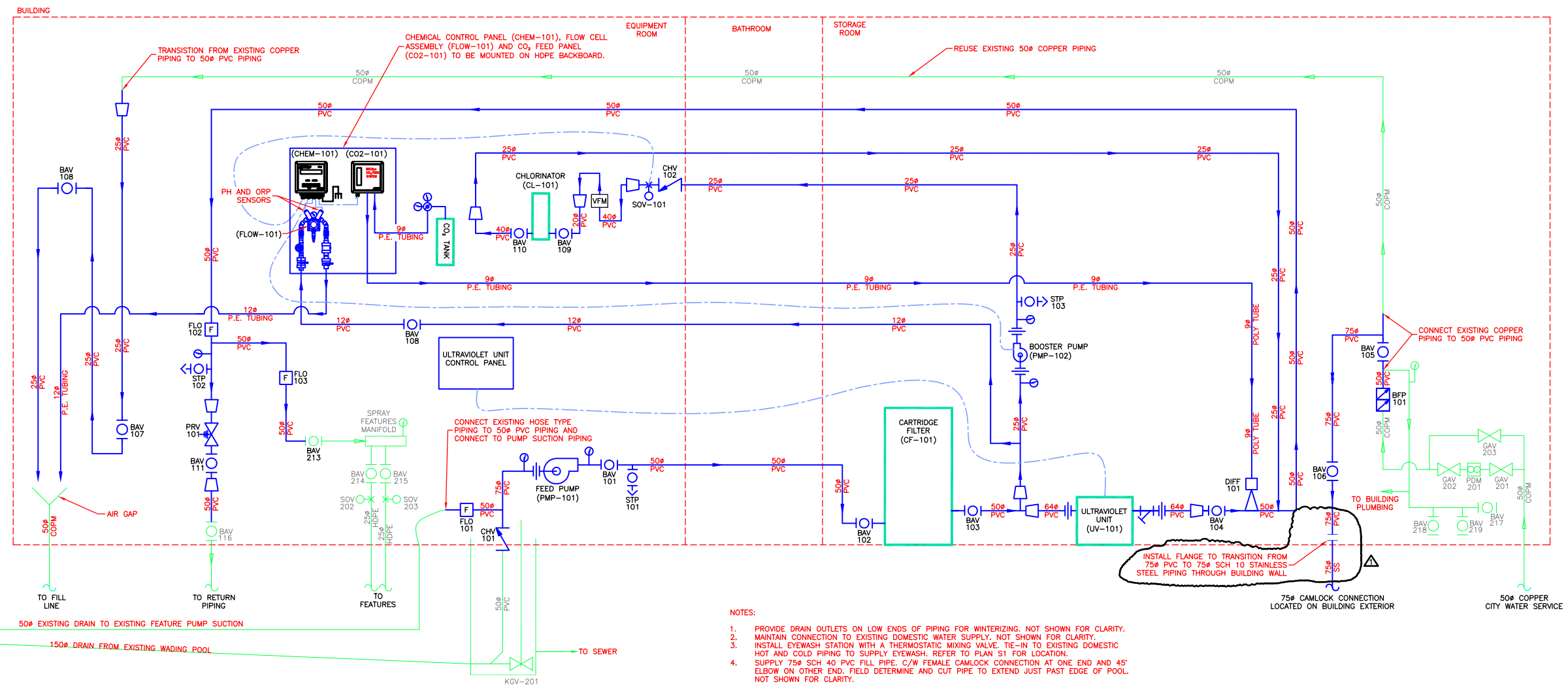


BILL OF MATERIAL	
NO.	DESCRIPTION
CHV-101	50# WAFER STYLE SILENT CHECK VALVE
CHV-102	25# BALL STYLE CHECK VALVE
FLO-101 TO FLO-103	50# FLOWIS COMBINED FLOW METER AND CHECK VALVE
CF-101	CARTRIDGE FILTER
UV-101	ULTRAVIOLET DISINFECTION UNIT
BFP-101	50# REDUCED ZONE BACKFLOW PREVENTER
BAV-101 TO BAV-105	50# FULL PORT TRUE UNION PVC BALL VALVE
BAV-106	75# FULL PORT TRUE UNION PVC BALL VALVE
BAV-107 & BAV-108	25# FULL PORT TRUE UNION PVC BALL VALVE
BAV-109	20# FULL PORT TRUE UNION PVC BALL VALVE
BAV-110	40# FULL PORT TRUE UNION PVC BALL VALVE
BAV-111	40# FULL PORT TRUE UNION PVC BALL VALVE
BAV-213	EXISTING IPEX 50# FULL PORT TRUE UNION PVC BALL VALVE TO REMAIN
BAV-214 & BAV-215	EXISTING IPEX 25# FULL PORT TRUE UNION PVC BALL VALVES TO REMAIN
BAV-216	EXISTING HAYWARD 50# FULL PORT TRUE UNION PVC BALL VALVE TO REMAIN
BAV-217 & BAV-219	EXISTING NCI 20# BRASS BALL VALVES TO REMAIN
BAV-218	EXISTING NCI 40# BRASS BALL VALVE TO REMAIN
GAV-201 GAV-202 GAV-203	50# GATE VALVES TO REMAIN
PDM-201	EXISTING BADGER POSITIVE DISPLACEMENT METER TO REMAIN
VFM	VARIABLE AREA FLOW METER RATED AT 0.88 TO 8.8 GPM
CL-101	EROSION TYPE CHLORINE CHEMICAL FEEDER. ACCU-TAB MODEL 3012 NSF 61 CERTIFIED CHLORINATOR
CO2-101	NATIONAL LINE MODEL NATIONAL 30 SCFH AUTOMATIC CARBON DIOXIDE FEED SYSTEM
PRV-101	40# PRESSURE REDUCING VALVE
PMP-101	PROCESS FEED PUMP
PMP-102	INLINE BOOSTER PUMP
CHEM-101	CHEMICAL CONTROL PANEL C/W CONTROLLER, PH/CL SENSORS AND FLOW CELL KIT (FLOW-101) MOUNTED ON HDPE BACKBOARD.
FLOW-101	FLOW CELL ASSEMBLY C/W FLOW CELL, FLOW SWITCH, PRESSURE GAUGE, 2 BALL VALVES AND A SAMPLE COCK.
KGV-201	200# EXISTING KNIFE GATE VALVE TO DRAIN WADING POOL.
STP-101 TO STP-103	SAMPLE TAP WITH WATTS BLF BACKFLOW PREVENTER AND ISOLATION VALVE.



PIPE MATERIAL CODE	
CODE	PIPE MATERIAL AND RATING
SS	STAINLESS STEEL SCHEDULE 10
PVC	PVC PIPE, SCHEDULE 80
TUBE	PLASTIC FLEXIBLE TUBING
CI	CAST IRON-RAIN WASTE VENT PIPE
COPM	COPPER PIPE
INS	INSULATED PIPE



- NOTES:**
- PROVIDE DRAIN OUTLETS ON LOW ENDS OF PIPING FOR WINTERIZING. NOT SHOWN FOR CLARITY.
  - MAINTAIN CONNECTION TO EXISTING DOMESTIC WATER SUPPLY. NOT SHOWN FOR CLARITY.
  - INSTALL EYEWASH STATION WITH A THERMOSTATIC MIXING VALVE. TIE-IN TO EXISTING DOMESTIC HOT AND COLD PIPING TO SUPPLY EYEWASH. REFER TO PLAN S1 FOR LOCATION.
  - SUPPLY 75# SCH 40 PVC FILL PIPE. C/W FEMALE CAMLOCK CONNECTION AT ONE END AND 45' ELBOW ON OTHER END. FIELD DETERMINE AND CUT PIPE TO EXTEND JUST PAST EDGE OF POOL. NOT SHOWN FOR CLARITY.



No.	REVISIONS	DATE	INITIALS
1	CHANGE BACKFLOW PREVENTER - ADDENDUM #2	15/01/27	RO
1	CLARIFICATION OF STAINLESS STEEL PIPING - ADDENDUM #2	15/01/26	RO

B.M. EL.

LOCATIONS OF UNDERGROUND STRUCTURES/UTILITIES AS SHOWN ARE BASED ON AVAILABLE INFORMATION BUT NO GUARANTEE IS GIVEN OR IMPLIED THAT ALL EXISTING UNDERGROUND STRUCTURES/UTILITIES ARE SHOWN OR THAT THE GIVEN LOCATIONS ARE EXACT. CONFIRMATION OF EXISTENCE AND EXACT LOCATION OF ALL UNDERGROUND STRUCTURES/UTILITIES MUST BE OBTAINED FROM THE APPROPRIATE AUTHORITY/OWNER, BY THE CONTRACTOR, BEFORE PROCEEDING WITH CONSTRUCTION.

ENGINEER'S SEAL

ORIGINAL DRAWING SIGNED AND SEALED BY R.M. OGER 15/01/14

**JR Cousin Consultants Ltd.**

91A Scurfield Blvd. Winnipeg MB R3Y 1G4  
p. (204) 489-0474  
f. (204) 489-0487  
www.jrcc.ca

ENGINEERING EXCELLENCE SINCE 1981

CODE: W-700.01	PROJECT: CITY OF WINNIPEG BROADWAY PARK WADING POOL WATER CIRCULATION & TREATMENT SYSTEM ALTERATIONS
DESIGNED BY: RO	TITLE: BROADWAY PARK WADING POOL PROCESS FLOW DIAGRAM
DRAWN BY: RO	BID OPPORTUNITY NO. 1145-2014
REVIEWED BY: JD	SCALE: NTS DATE: 14/12/02 PLAN: P1-R1 SHEET: 3 OF 4