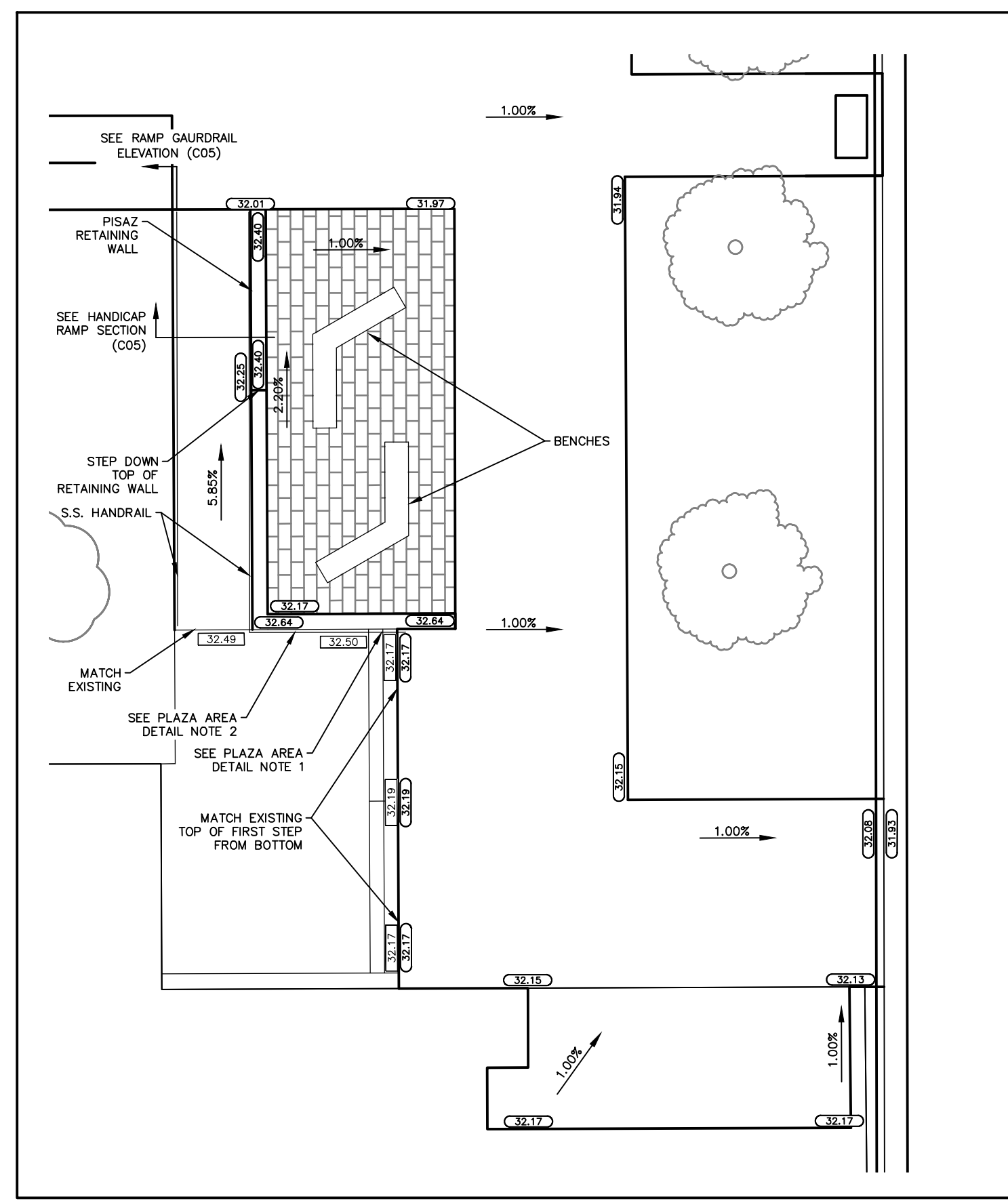
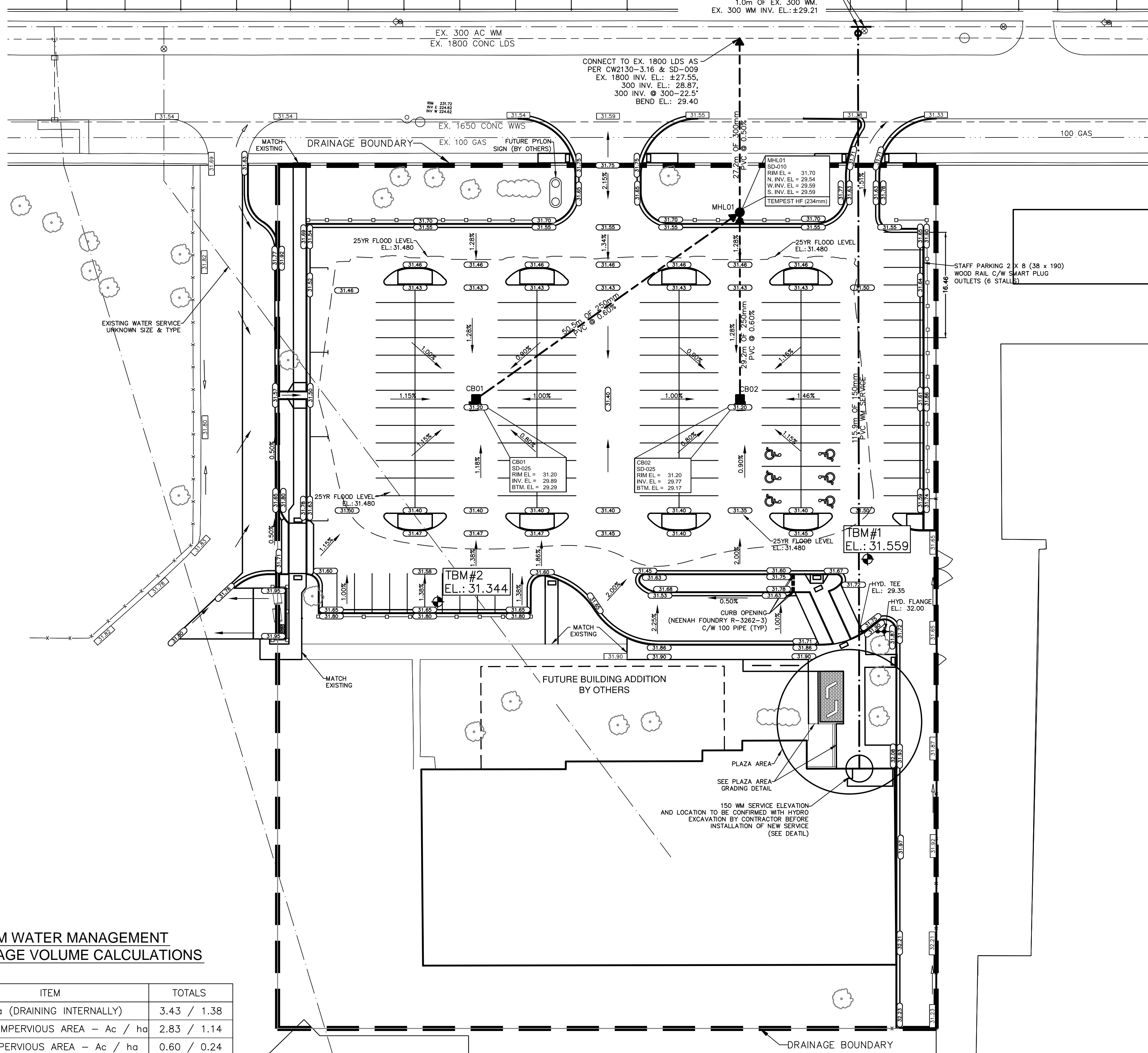


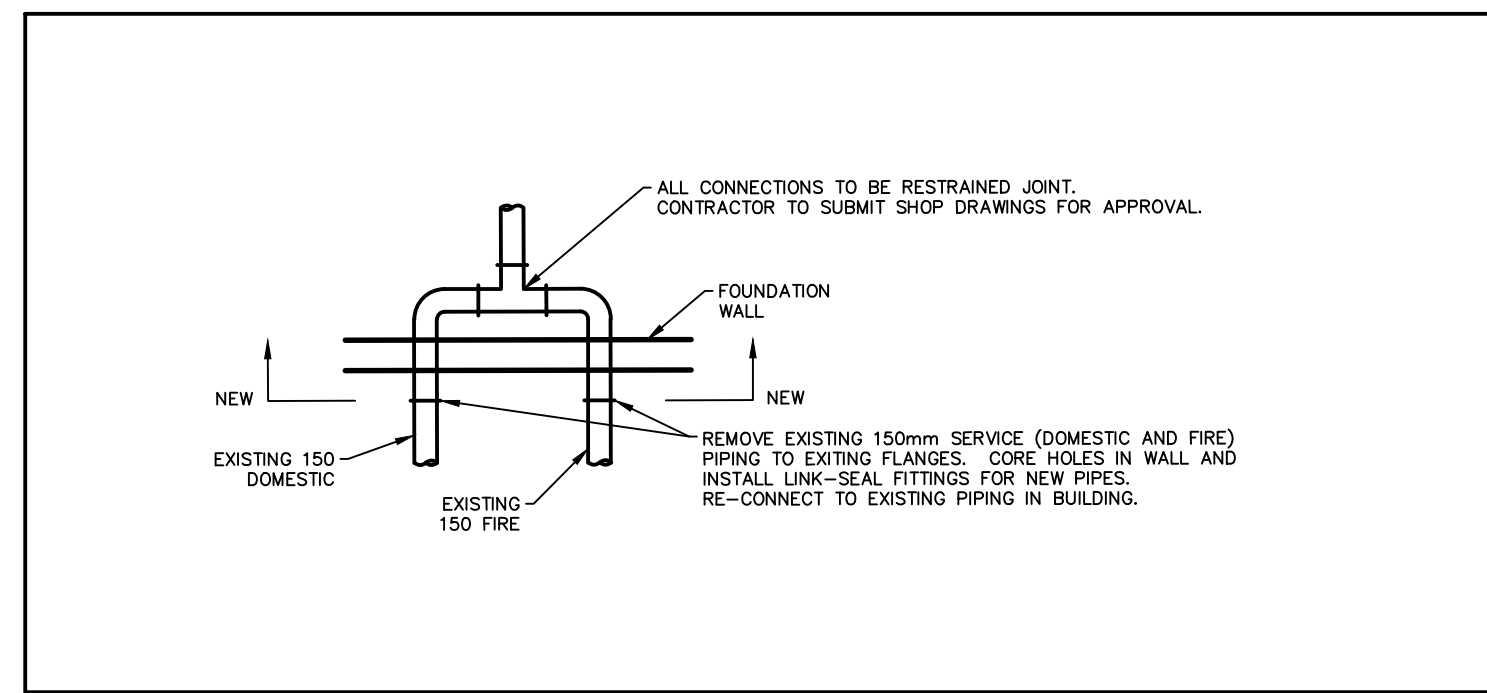
# ADSUM AVE.

ABANDON EX. SERVICE AND VALVE AS PER CW2110-3.16. INSTALL 3.0m OF 300mm PVC COMPLETE WITH 300X300X150 TEE, G.V. AND IRON COUPLINGS. LOCATE G.V. WITHIN 1.0m OF EX. 300 MM EX. 300 MM INV. EL.: ±29.21



PLAZA AREA GRADING DETAILS

1:100



WATER SERVICE CONNECTION DETAILS

1:100

- CONSTRUCTION NOTES**
- EXISTING AND DESIGN ELEVATIONS BASED ON TBM#1 AND TBM#2 AS IDENTIFIED ON THIS DRAWING.
  - USE GRANULAR BACKFILL FOR ALL UNDERGROUND WORKS INSTALLED UNDER PROPOSED PAVEMENT.
  - MAINTAIN 3.00 OF COVER ON WATERMAIN
  - ALL WATER LINES TO BE PRESSURE TESTED AND CHLORINATED PRIOR TO TURN ON IN ACCORDANCE WITH CW 2125
  - PIPE INSTALLED UNDER EXISTING PAVEMENT TO BE INSTALLED BY TRENCHLESS METHODS.
  - ALL WORK TO CONFORM TO THE CITY OF WINNIPEG STANDARD CONSTRUCTION SPECIFICATIONS.
  - ADD 200.000 TO ALL ELEVATIONS.

- PLAZA AREA DETAIL NOTES**
- REMOVE EXISTING STEEL HANDRAIL, CUT OFF FLUSH AND PATCH HOLE WITH NON-SHRINK GROUT.
  - INSTALL NEW 1070 HIGH (900 @ STAIR) S.S. HANDRAIL FROM NEW RAMP HANDRAIL ALONG NORTH SIDE OF LANDING AND DOWN STAIRS. DETAIL SIMILAR TO RAMP HANDRAIL EXCEPT WITHOUT H/C RAIL. EXTEND AROUND CORNER AND CONNECT TO NEW RAMP HANDRAIL. PROVIDE 300mm EXTENSION TO CODE AT BOTTOM OF STAIR. SUBMIT DETAILED SHOP DRAWINGS FOR HANDRAILS.

**STORM WATER MANAGEMENT STORAGE VOLUME CALCULATIONS**

ITEM	TOTALS
A - ha (DRAINING INTERNALLY)	3.43 / 1.38
TOTAL IMPERVIOUS AREA - Ac / ha	2.83 / 1.14
TOTAL PERVIOUS AREA - Ac / ha	0.60 / 0.24
C - ALLOWABLE COEFF.	0.35
T <sub>g</sub> FOR T <sub>c</sub> = 10 min $\frac{D}{R}$	4.31
Q <sub>s</sub> - CFS / CMS	5.17 / 0.146
STORAGE REQUIRED - m <sup>3</sup>	318
STORAGE AVAILABLE - m <sup>3</sup>	318

150 mm WM	WATERMAIN	150 mm WM	GAS	CHAIN LINK FENCE	LEGEND - PLAN	PROPOSED	EXISTING	LEGEND - PROFILE	PROPOSED	EXISTING
○	HYDRANT	●	HYDRO	-X-	PEDESTAL	---	---	---	---	---
⊗	VALVE	●	M.T.S.	□	GROUND ELEVATION	230.00	230.00	---	---	---
---	LAND DRAINAGE SEWER	---	---	---	PAVEMENT ELEVATION	(230.000)	(230.000)	---	---	---
---	WASTE WATER SEWER	---	---	---	PROPERTY LINE	---	---	---	---	---
□	MANHOLE	●	---	---	SURVEY BAR	---	---	---	---	---
○	CATCH BASIN	●	---	---	CURB STOP	---	---	---	---	---
△	CURB INLET	▲	---	---	TESTHOLE	---	---	---	---	---
▽	SIGN	●	---	---	---	---	---	---	---	---
○	LAMP STANDARD	●	---	---	---	---	---	---	---	---
•	UTILITY POLE	●	---	---	---	---	---	---	---	---

**LOCATION APPROVED UNDERGROUND STRUCTURES**

SUPV. U/G STRUCTURES COMMITTEE DATE

NOTE: LOCATION OF UNDERGROUND STRUCTURES AS SHOWN ARE BASED ON THE BEST INFORMATION AVAILABLE AND GUARANTEES IS GIVEN THAT ALL EXISTING UTILITIES ARE SHOWN OR THAT THE GIVEN LOCATIONS IS EXACT CONFIRMATION OF EXISTENCE AND EXACT LOCATION OF ALL SERVICES AND BE OBTAINED FROM THE INDIVIDUAL UTILITIES BEFORE PROCEEDING WITH CONSTRUCTION.

NO.	REVISIONS	DATE	BY
3	ADDED RETAINING WALL ELEVATIONS	14/07/08	BDE
2	ISSUED FOR TENDER	14/06/20	BDE
1	ISSUED FOR CLIENT SIGN OFF	14/04/30	BDE
0	ISSUED FOR REVIEW	14/01/17	BDE

**WSP**

1600 BUFFALO PLACE  
WINNIPEG, MB, CANADA R3T 6B8  
PHONE: 204-477-6650  
FAX: 204-474-2864  
WWW.WSPGROUP.COM

DESIGNED BY: B.D.E.  
DRAWN BY: M.B.S./R.H.  
CHECKED BY: B.J.  
APPROVED BY: B.J.  
HOR. SCALE: 1:400 (A1)  
VERT. SCALE:  
DATE: FEBRUARY 2014

ENGINEER'S SEAL

PROVINCE OF MANITOBA  
REGISTERED PROFESSIONAL ENGINEER  
P. B. JONSON  
14-06-14

CONSULTANT DRAWING NO. 131-20672-C03-R3

**THE CITY OF WINNIPEG**  
PLANNING, PROPERTY & DEVELOPMENT

Winnipeg

**SEVEN OAKS POOL PARKING LOT RECONSTRUCTION PROJECT**  
SITE GRADING AND SERVICING PLAN

CITY DRAWING NO. 23-2014-C03  
SHEET 3 OF 5  
REV. C03 3

**METRIC**  
WHOLE NUMBERS INDICATE MILLIMETRES  
DECIMALIZED NUMBERS INDICATE METRES

**APEGM**  
Certificate of Authorization  
WSP Canada Inc.  
No. 5079 Date: April 30, 2014