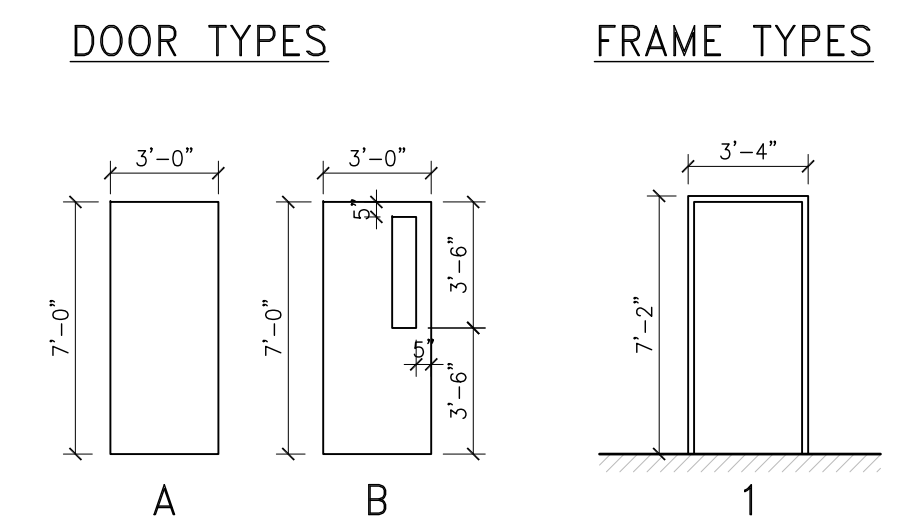


DOOR SCHEDULE															
DOOR										FRAME				RATING	REMARK
NO.	WIDTH x HEIGHT x THICK	TYPE	MATL	CORE	FIN	CLR	HWRE	TYPE	MATL	FIN	CLR				
D-001	36" x 84" x 1.75"	A	STL	HM	PT	1	2	1	STL	PT	TO MATCH DOOR	1 HOUR	-		
D-003	36" x 84" x 1.75"	A	STL	HM	PT	1	2	1	STL	PT	TO MATCH DOOR	1 HOUR	-		
D-004	36" x 84" x 1.75"	A	STL	HM	PT	1	1	1	STL	PT	TO MATCH DOOR	-	-		
D-005	36" x 84" x 1.75"	A	STL	HM	PT	1	2	1	STL	PT	TO MATCH DOOR	1 HOUR	-		
D-006	36" x 84" x 1.75"	A	STL	HM	PT	1	2	1	STL	PT	TO MATCH DOOR	-	-		
D-007A	36" x 84" x 1.75"	A	STL	HM	PT	1	3	1	STL	PT	TO MATCH DOOR	-	-		
D-007B	36" x 84" x 1.75"	A	STL	HM	PT	1	3	1	STL	PT	TO MATCH DOOR	-	-		
D-007C	36" x 84" x 1.75"	A	STL	HM	PT	1	3	1	STL	PT	TO MATCH DOOR	-	-		
D-007D	36" x 84" x 1.75"	B	STL	HM	PT	1	2	1	STL	PT	TO MATCH DOOR	-	-		
D-007E	36" x 84" x 1.75"	B	STL	HM	PT	1	4	1	STL	PT	TO MATCH DOOR	-	-		
D-008	36" x 84" x 1.75"	A	STL	HM	PT	1	4	1	STL	PT	TO MATCH DOOR	1 HOUR	-		
D-008A	36" x 84" x 1.75"	A	STL	HM	PT	1	4	1	STL	PT	TO MATCH DOOR	1 HOUR	-		
D-009	36" x 84" x 1.75"	A	STL	HM	PT	1	2	1	STL	PT	TO MATCH DOOR	1 HOUR	-		
D-010	36" x 84" x 1.75"	A	STL	HM	PT	1	2	1	STL	PT	TO MATCH DOOR	1 HOUR	-		
D-011	36" x 84" x 1.75"	A	STL	HM	PT	1	2	1	STL	PT	TO MATCH DOOR	1 HOUR	-		

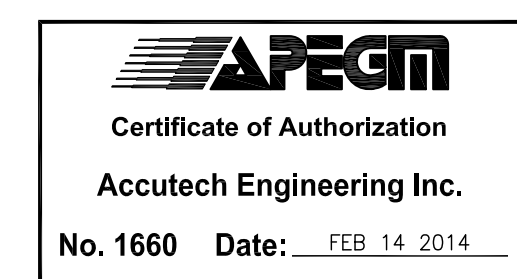
ROOM FINISH SCHEDULE																		
ROOM	FLOOR	BASE	NORTH WALL	SOUTH WALL	EAST WALL	WEST WALL	CEILING	REMARKS										
NO.	NAME	MATL	FIN	C	MATL	FIN	C	MATL	FIN	C	MATL	FIN	C	HT	MATL	FIN	C	
001	AIR HANDLING ROOM	CONC	HARDNER	GREY	RCB	-	-	CONC	-	-	CONC	-	-	-	-	-	-	-
002	MAIN CORRIDOR	CONC	VT	VT1	RCB	-	-	GWB	PT	GWB	PT	GWB	PT	PT2	GWB	PT	PT2	96ACT
003	STORAGE ROOM	CONC	VT	VT1	RCB	-	-	GWB	PT	GWB	PT	CONC	-	-	GWB	PT	PT2	-
004	WASHROOM	CONC	VSF	VSF1	RCB	-	-	GWB	PT	GWB	PT	CONC	-	-	GWB	PT	PT2	-
005	MECHANICAL ROOM	CONC	HARDNER	GREY	RCB	-	-	GWB	PT	GWB	PT	PT2	CONC	-	GWB	PT	PT2	-
006	MEETING ROOM	CONC	VT	VT1	RCB	-	-	GWB	PT	GWB	PT	PT2	GWB	PT	PT2	GWB	PT	96ACT
007A	TINY TOTS	CONC	CPT	CPT1	RCB	-	-	WD	-	WD	-	WD	-	-	WD	-	-	EXISTING CEILING
007B	TINY TOTS	CONC	VT	VT1	RCB	-	-	WD	-	WD	-	WD	-	-	WD	-	-	EXISTING CEILING
008	ACCESS CORRIDOR	CONC	VT	VT1	RCB	-	-	GWB	PT	GWB	PT	PT2	GWB	PT	PT2	GWB	PT	96ACT
009	OFFICE	CONC	HARDNER	GREY	RCB	-	-	CONC	-	-	GWB	PT	PT2	GWB	PT	PT2	-	-
010	ELECTRICAL ROOM	CONC	HARDNER	GREY	RCB	-	-	CONC	-	-	GWB	PT	PT2	CONC	-	-	-	-
011	METER ROOM	CONC	HARDNER	GREY	RCB	-	-	CONC	-	-	GWB	PT	PT2	GWB	PT	PT2	-	-

HARDWARE SCHEDULE				
HARDWARE GROUP 1				
3	HINGES	3CB1 4.5x4	652	IVES
1	DEADLOCK	B660P	626	SCHLAGE
1	DOOR PULL	112	320	RW
1	PUSH PLATE	70C	320	RW
1	DOOR CLOSER	4040T	689	LCN
1	KICK PLATE	K1050	320	RW
1	DOOR STOP	406	260	RW
HARDWARE GROUP 2				
3	HINGES	3CB1 4.5x4	652	IVES
1	PRIVACY SET	D405 ORB	626	SCHLAGE
1	DOOR CLOSER	4040T	689	LCN
1	KICK PLATE	K1050	320	RW
1	DOOR STOP	406	260	RW
HARDWARE GROUP 3				
3	HINGES	3CB1 4.5x4	630	IVES
1	PASSAGE SET	ND10S RHO	626	SCHLAGE
1	DOOR CLOSER	1461 SCUSH	689	LCN
HARDWARE GROUP 4				
3	HINGES	3CB1 4.5x4	630	IVES
1	EXIT DEVICE	98x996L TRIM	628	VON DUP
1	DOOR CLOSER	4040T	689	LCN
1	KICK PLATE	K1050	320	RW
1	DOOR STOP	406	320	RW
1	MAGNETIC HOLD OPEN CONNECTED TO FIRE ALARM	406	320	RW



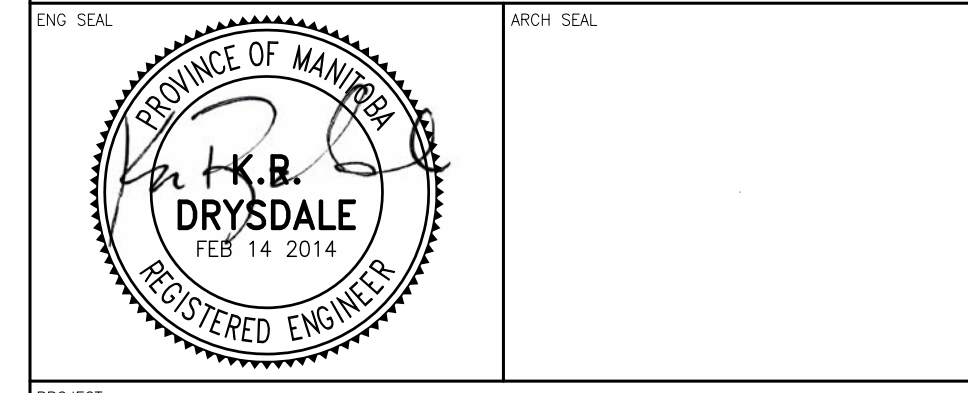
- WALL TYPES:**
- 1 NEW 6" STEEL STUDS @ 16" O/C
  - 2 NEW R20 BATT INSULATION
  - 3 NEW 6 MIL POLY VAPOUR BARRIER
  - 4 NEW 5/8" DRYWALL
  - 5 NEW 5/8" DRYWALL
  - 6 NEW 6" STEEL STUDS @ 16" O/C
  - 7 NEW R20 BATT INSULATION
  - 8 NEW 5/8" DRYWALL
  - 9 BLANK
  - 10 NEW 5/8" TYPE "X" DRYWALL
  - 11 NEW 3 5/8" STEEL STUDS @ 12" O/C
  - 12 NEW 65mm THICK ABSORPTIVE MATERIAL
  - 13 NEW 5/8" TYPE "X" DRYWALL
  - 14 (1 HOUR FIRE RATED NBCC S1b)
  - 15 NEW 6" STEEL STUDS @ 16 O/C
  - 16 NEW 5/8" DRYWALL
  - 17 NEW 5/8" TYPE "X" DRYWALL
  - 18 NEW 3 5/8" STEEL STUDS @ 12" O/C
  - 19 NEW 65mm THICK ABSORPTIVE MATERIAL
  - 20 NEW 5/8" TYPE "X" DRYWALL
  - 21 (1 HOUR FIRE RATED NBCC S1b)
- CONSTRUCTION KEYNOTES:**
- 1 FLOORING DIVISION TO ALIGN WITH EDGE OF WINDOW.
  - 2 BLANK.
  - 3 NEW KITCHENETTE. REFER TO DETAILS ON B500.
  - 4 NEW FLOORING. REFER TO ROOM FINISH SCHEDULE
  - 5 NEW FLOOR DRAIN, REPLACE TO MATCH EXISTING, INCLUDING EPOXY COATED CAST IRON.
  - 6 NEW PARTITION WALL.
  - 7 REINSTALL MECHANICAL EQUIPMENT, PLUMBING, PUMPS, ELECTRICAL, ETC.
  - 8 NEW CEILING. REFER TO ROOM FINISH SCHEDULE.
  - 9 NEW 1/2" ASPHALT IMPREGNATED FIBER BOARD JOINT, BETWEEN NEW SLAB AND EXISTING.
  - 10 NEW CONCRETE SLUMP PIT, C/W CHECKER PLATE COVER. REFER TO SECTION 3/S500.
  - 11 RE-INSTALL EXISTING OPEN SHELVING.
- GENERAL NOTES:**
- ALL ELECTRICAL AND MECHANICAL, INCLUDING LIGHTING, RECEPTACLES, SWITCHES ARE TO BE PRESERVED AND REUSED OR REPLACED TO MATCH EXISTING QUANTITIES AND LOCATIONS. ALL EXISTING UTILITY LINES, DRAINS, WEEP TILE, ETC., ARE TO BE REPLACED WITH NEW.
  - MAINTAIN FIRE RATING AT PENETRATIONS THROUGH ALL FIRE RATED WALLS.
  - REINSTALL AIR TRANSFER GRILLES AND FIRE EXTINGUISHERS IN ORIGINAL LOCATIONS.
  - DOOR DOOR: DOOR C/W MAGNETIC HOLD OPEN DEVICE CONNECTED TO FIRE ALARM. DOOR IN NORMAL HOLD OPEN; ON ALARM DOOR CLOSED.
- NOTES:**
- ALL INTERIOR WALLS TO EXTEND TO U/S OF STRUCTURE AND BE SEALED TO THE STRUCTURE.
  - ALL FIRE RATED WALLS TO EXTEND TO U/S OF THE CONCRETE STRUCTURE ABOVE.

**A** BASEMENT NEW FLOOR PLAN  
 1/4" = 1' - 0"  
 \* SET ELEVATION TOP OF BASEMENT SLAB = 7 1/2" BELOW BOTTOM OF EXISTING LAST STAIR TREAD  
 \* ELEVATION = 0.00



7				
6				
5	ISSUED WITH ADDENDUM #3	VCV	KRD	FEB 14 2014
4	RE-ISSUED FOR TENDER	VCV	KRD	JAN 09 2014
3	ISSUED WITH ADDENDUM	VCV	KRD	JUL 02 2013
2	ISSUED FOR TENDER	VCV	KRD	JUN 18 2013
1	ISSUED FOR 100% CLIENT REVIEW	VCV	KRD	MAY 16 2013
0	ISSUED FOR CLIENT REVIEW	VCV	KRD	APR 26 2013
REV	DESCRIPTION	DWN	APP	REV DATE

**Accutech Engineering Inc.**  
 Tomorrow's Technology Today  
 605-287 Broadway, Winnipeg, Manitoba Canada R3C 0R9  
 Phone 204.944.1555 Fax 204.944.1444  
 www.accutech.ca



**CITY OF WINNIPEG**  
**SIR JOHN FRANKLIN CC BASEMENT STRUCTURAL REPAIRS**

PROJECT: BASEMENT NEW FLOOR PLAN  
 BID OPPORTUNITY No. 32-2014

DRAWN BY: VCV	CHECKED BY: DBR	DATE: FEB 14 2014	SHEET NO: B102
DESIGNED BY: KR D	CHECKED BY: KR D	SCALE: AS NOTED	REVISION NO: 5