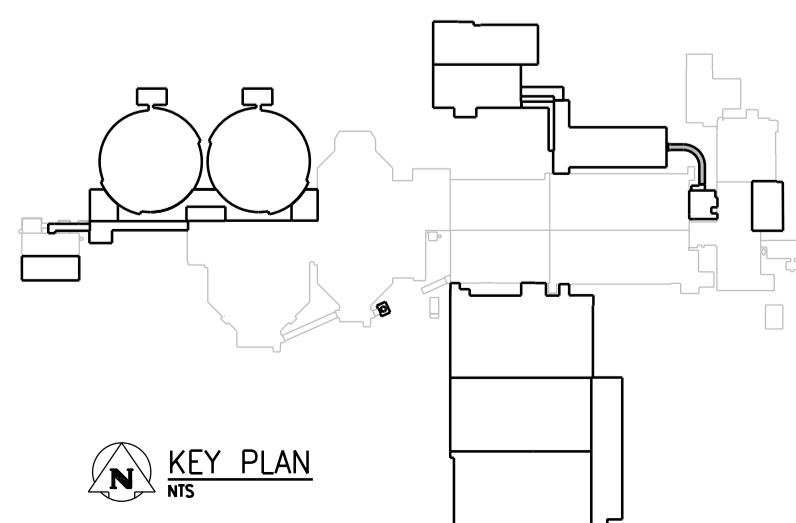


PILING PLAN
1:100



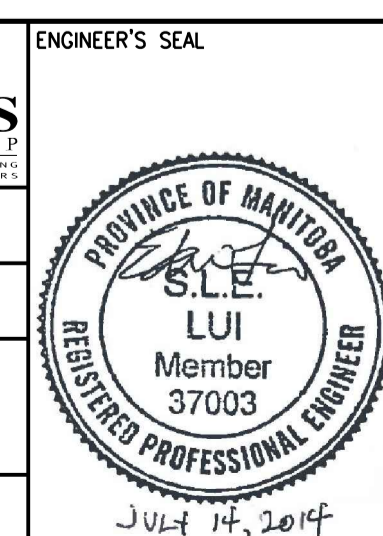
NOTES:

1. REFER TO DWG 1-0102-SGAD-A001 FOR GENERAL NOTES.
2. REFER TO DWG 1-0102-SGAD-A002 FOR OVERALL SITE PLAN AND SEQUENCING.
3. PILE DIAMETER (D) = 300mm
4. PILES CUT-OFF ELEVATION = 231.875 UNLESS NOTED OTHERWISE.
5. ESTIMATED PILE REFUSAL EL 212.000



NO.	REVISIONS	DATE	DESIGN	CHECK
00	ISSUED FOR ADDENDUM NO. 1	07/2014	G.O.	B.W.

CH2MHILL		KCS	
SNC-LAVALIN		REGISTERED PROFESSIONAL ENGINEER	
DESIGNED BY: E. LUI	CHECKED BY:		
DRAWN BY: G. OMORI	APPROVED BY:		
SCALE: 1:100	ISSUED FOR CONSTRUCTION BY:		
DATE:	DATE:		
CONSULTANT NO.: 474248			



THE CITY OF WINNIPEG WATER AND WASTE DEPARTMENT SOUTH END WATER POLLUTION CONTROL CENTRE SEWPCC UPGRADING/EXPANSION PROJECT STRUCTURAL HIGH RATE CLARIFICATION BUILDING INLET CHANNEL PILING PLAN			
CITY DRAWING NUMBER 1-0102-SFDW-K002	SHEET 001	REV. 00	SIZE A1