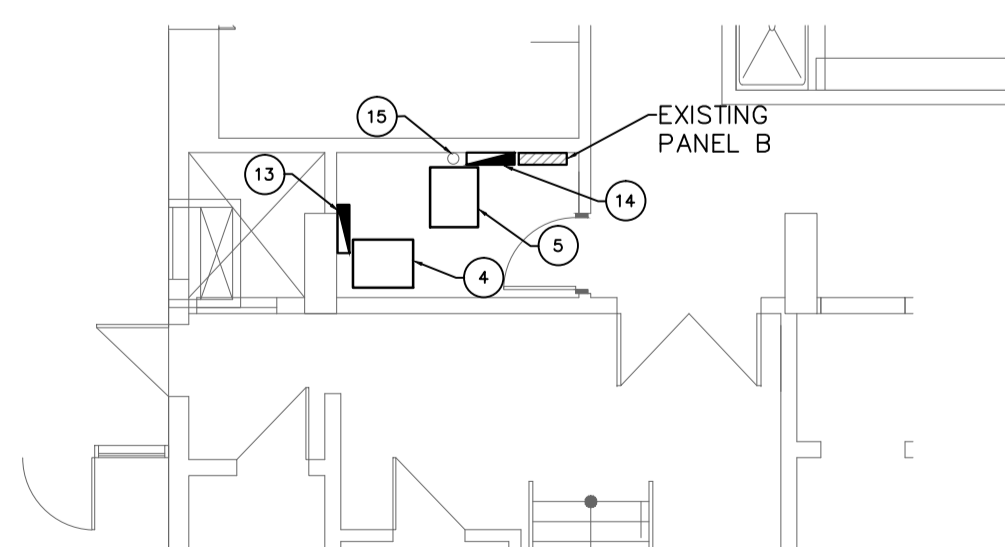


5	ISSUED FOR ADDENDUM #1	KO	23.06.14
4	ISSUED FOR TENDER AND CONSTRUCTION	KO	04.06.14
3	ISSUED FOR FINAL REVIEW	KO	17.04.14
2	ISSUED FOR REVIEW	KO	20.02.14
1	ISSUED FOR REVIEW	KO	12.11.13

No.	REVISION/DESCRIPTION	BY	DATE
SEAL			

**25 POSEIDON BAY - MAIN FLOOR PLAN POWER AND COMMUNICATIONS**  
 SCALE: 1/16"=1'-0"



**11 MAIN FLOOR COMMUNICATION ROOM**  
 SCALE: 1/8"=1'-0"

KEY NOTES:	
1	PROVIDE 12-CAT6 CABLES COILED UP IN CEILING. HANG CABLES FROM A DEDICATED LARGE J-HOOK. ENSURE CABLES ARE TERMINATED WITH RJ-45 CONNECTORS. PROVIDE A COVER TO PROTECT THE CABLE CONNECTORS. CABLES ARE TO BE EACH OF 25FT COILS FROM LOCATION OF J-HOOK. LOCATE J-HOOK NORTH OF COLUMN.
2	PROVIDE 6 NEW DATA OUTLETS IN MULTI-GANG BOX. RECESS OUTLETS IF POSSIBLE.
3	CONNECTION TO DEDICATED SWIMCLUB ROUTER.
4	EXISTING CCTV SYSTEM. RECONNECT WITH A NEW CAT 6 CONNECTION FROM MDR
5	EXISTING MAIN DATA RACK(MDR)
6	LOCATE OUTLET NEAR LARGE SCREEN MONITOR.
7	CABLING IN THIS AREA TO RUN BACK TO SDR-1
8	CABLING IN THIS AREA TO RUN BACK TO SDR-2
9	REMOVE OUTLETS FROM THIS LOCATION.
10	CABLING IN THIS AREA TO RUN BACK TO MDR
11	SEE LARGER PLAN.
12	COORDINATE FINAL LOCATION ON SITE WITH CONTRACT ADMINISTRATOR.

13	EXISTING SHAW WIFI (TO REMAIN AS-IS)
14	EXISTING MTS. PUNCH DOWN BIX
15	EXISTING TERRASSPAN FIBRE RISER FROM BELOW
16	PROVIDE A DEDICATED 120V, 15A DUPLEX RECEPTACLE AND #6 INSULATED GROUND FOR NEW DATA CABINET. RUN TO NEAREST PANEL WITH CAPACITY.
17	RELOCATE SPEAKER, VOLUME CONTROL AND CONDUIT TO SUIT SDR-2 LOCATION. RELOCATE PERIPHERAL EQUIPMENT SUCH AS FIRE EXTINGUISHER, ETC AS REQUIRED. SDR-2 TO BE ADJACENT TO EXISTING SOUND CABINET.
18	APPROXIMATE ROUTE OF NEW FIBRE RUN TO THIRD FLOOR SDR-3
19	REMOVE EXISTING SURFACE MOUNTED OUTLETS AND COILED CABLE. THESE DO CONNECT BACK TO A RACK. CONFIRM ON SITE WITH CONTRACT ADMINISTRATOR.
20	REMOVE OLD TEMPORARY WIRING AND PERMANENTLY CONNECT BACK TO THE MDR WITH CAT 6 CABLE.
21	PROVIDE A NEW RECEPTACLE AT THIS LOCATION. WIRE AND CONNECT BACK TO THE NEAREST PANEL WITH CAPACITY. USE A DEDICATED NEUTRAL CONDUCTOR.

DRAWING NOTES:	
1.	DATA OUTLETS DESIGNATED AS FOLLOWS: N: NEW OUTLET, H: NEW OUTLET AT HIGH LEVEL. UNMARKED OUTLETS ARE EXISTING TO BE RE-CABLED WITH NEW CAT 6 CABLE.
2.	COORDINATE ALL CORING, DRILLING AND ANY WORK IN ASBESTOS IDENTIFIED AREAS. ENSURE CONTRACT ADMINISTRATOR DEEMS AREA CLEAR TO WORK BEFORE PROCEEDING.
3.	CONTRACTOR TO PERFORM SCANNING PRIOR TO CORING.
4.	RECEPTACLES SUPPLYING POWER TO DATA RACKS AND CABINETS ARE TO HAVE INTEGRAL TVSS PROTECTION. HUBBELL HBL5260WSA.
5.	IN AREAS EXPOSED TO MOISTURE OR IN HUMID ENVIRONMENTS, PROVIDE GASKETED, SELF-CLOSING COVERS FOR DATA OUTLETS. USE PASS AND SEYMOUR #3723 WITH A BELDEN KEYCONNECT ADAPTER PLATE OR EQUAL. RECEPTACLES TO HAVE SELF CLOSING GASKETED COVERS.
6.	ALL RECEPTACLES WITHIN THE VICINITY OF THE POOL, INCLUDING POOL DECK TO BE GFCI PROTECTED.

DRAWN	CHECKED	DESIGNED	APPROVED
KOLO	DH	KO	KO
DATE: 2013.08.20	USER APPROVAL		

THE CITY OF WINNIPEG  
 PLANNING, PROPERTY AND DEVELOPMENT DEPARTMENT  
 MUNICIPAL ACCOMMODATIONS DIVISION  
 3-65 GARRY STREET, R3C 4K4

PROJECT  
**PAN AM POOL**  
 NETWORK INFRASTRUCTURE UPGRADE  
 499-2014  
 25 POSEIDON BAY

SHEET TITLE  
**MAIN FLOOR LEVEL**  
**POWER AND COMMUNICATIONS**

SCALE	PROJECT No:	SHEET No:
AS SHOWN	2013-034	E2