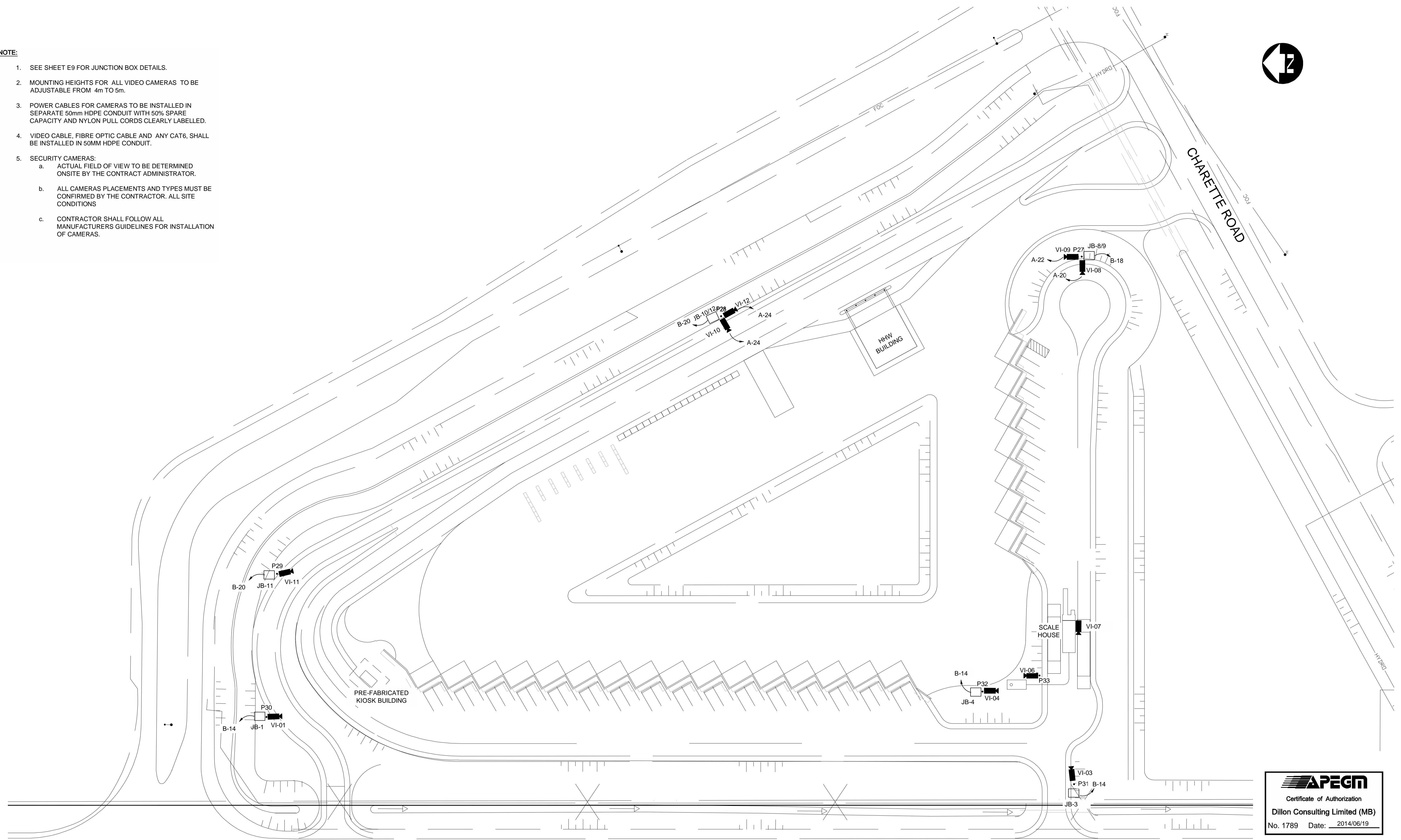
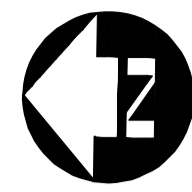


NOTE:

1. SEE SHEET E9 FOR JUNCTION BOX DETAILS.
2. MOUNTING HEIGHTS FOR ALL VIDEO CAMERAS TO BE ADJUSTABLE FROM 4m TO 5m.
3. POWER CABLES FOR CAMERAS TO BE INSTALLED IN SEPARATE 50mm HDPE CONDUIT WITH 50% SPARE CAPACITY AND NYLON PULL CORDS CLEARLY LABELLED.
4. VIDEO CABLE, FIBRE OPTIC CABLE AND ANY CAT6, SHALL BE INSTALLED IN 50MM HDPE CONDUIT.
5. SECURITY CAMERAS:
 - a. ACTUAL FIELD OF VIEW TO BE DETERMINED ONSITE BY THE CONTRACT ADMINISTRATOR.
 - b. ALL CAMERAS PLACEMENTS AND TYPES MUST BE CONFIRMED BY THE CONTRACTOR. ALL SITE CONDITIONS
 - c. CONTRACTOR SHALL FOLLOW ALL MANUFACTURERS GUIDELINES FOR INSTALLATION OF CAMERAS.



SITE PLAN - SECURITY CAMERA LAYOUT
1:500

APEGM
Certificate of Authorization
Dillon Consulting Limited (MB)
No. 1789 Date: 2014/06/19

METRIC

WHOLE NUMBERS INDICATE MILLIMETRES
DECIMALIZED NUMBERS INDICATE METRES

B.M. ELEV.			DESIGNED BY: JAD				
			DRAWN BY: MS			4R WINNIPEG DEPOT BRADY ROAD RESOURCE MANAGEMENT FACILITY	
			CHECKED BY: BM			CITY DRAWING NUMBER 1-0400A-E0007-001	
			APPROVED BY: ARR			SHEET 32 OF 35	
			HOR. SCALE: 1:500	RELEASED FOR CONSTRUCTION	CONSULTANT PROJECT NUMBER 13-8224	CONSULTANT DRAWING NUMBER E7 (AD-1)	
			VERTICAL	DATE	SITE PLAN SECURITY CAMERAS LAYOUT		
3 ISSUED FOR TENDER 14/06/19 ARR			DATE: JULY 2014	DATE			
NO. REVISIONS			DATE	BY	DATE		

G:\CAD\DFS\138224\04-Electrical\01-Contract\138224-04-ELEC-CON.dwg