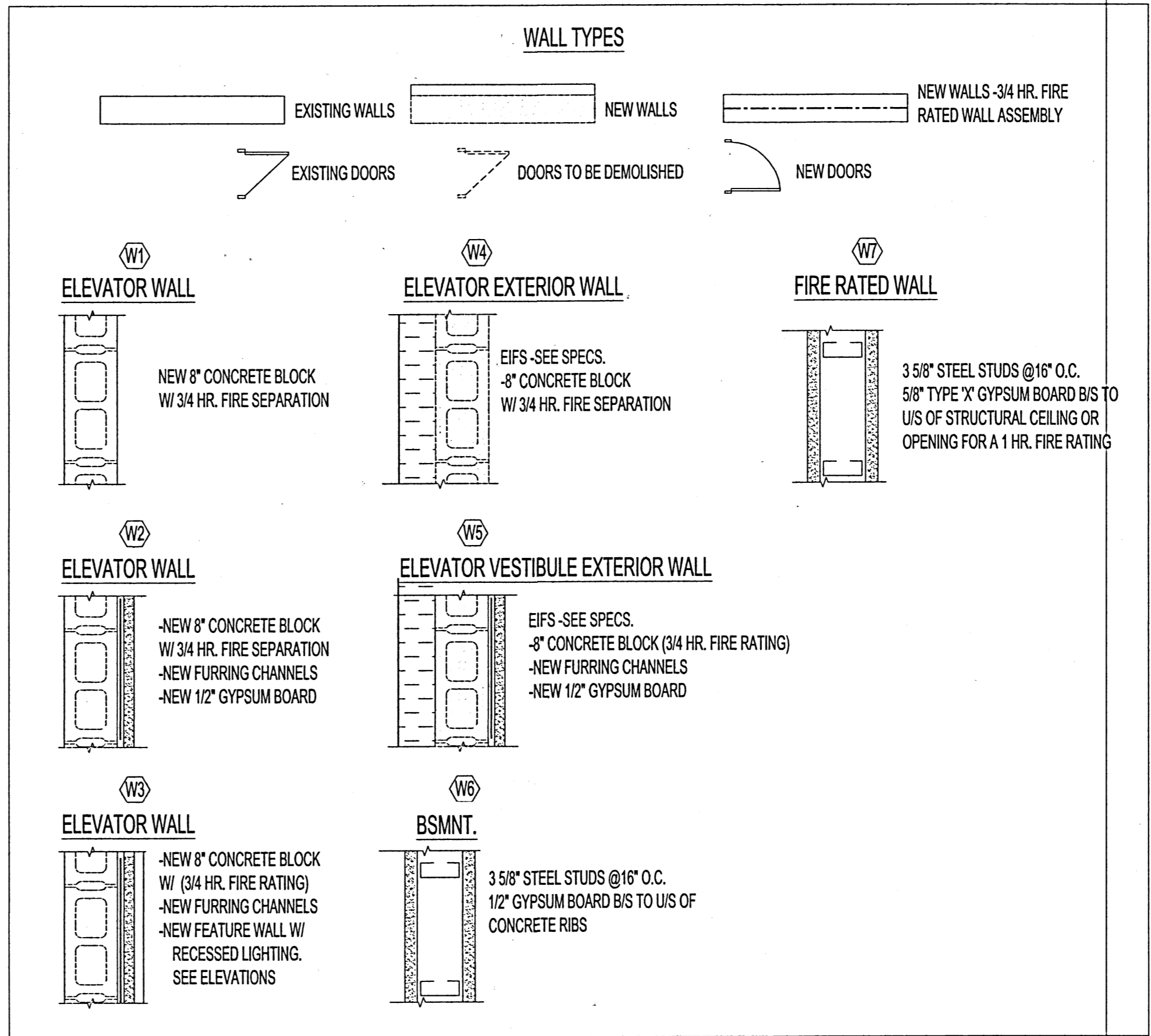
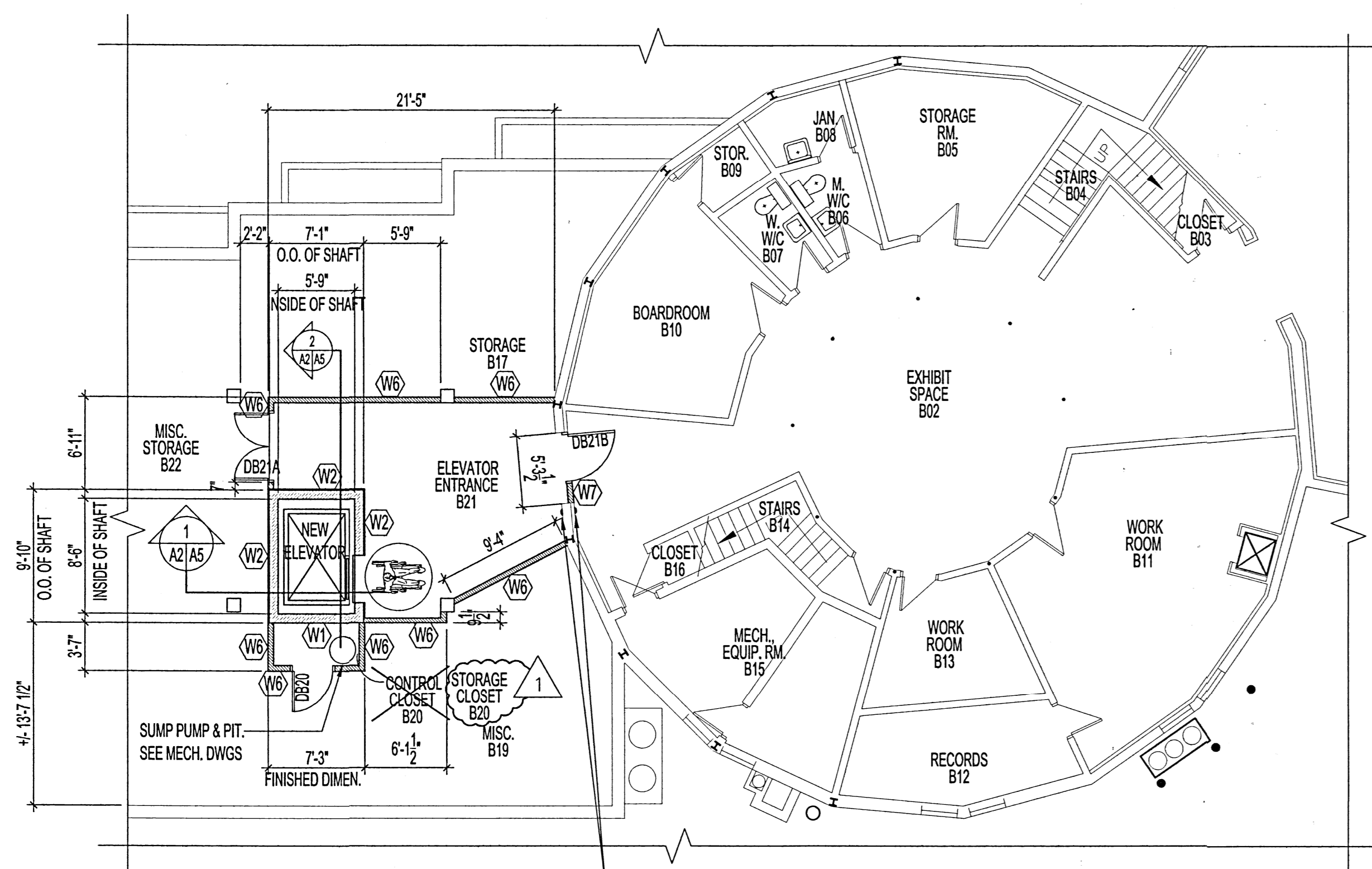
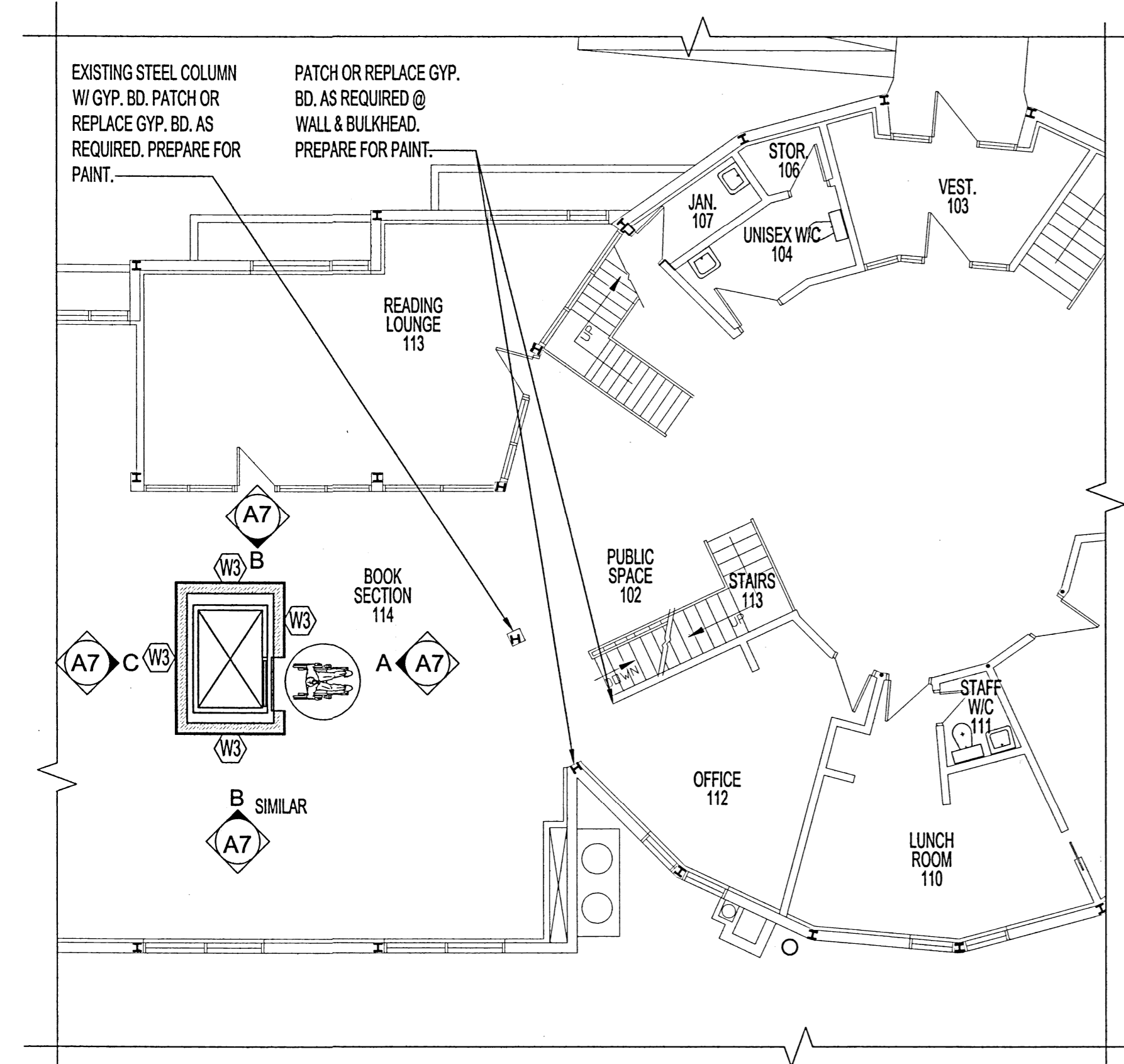


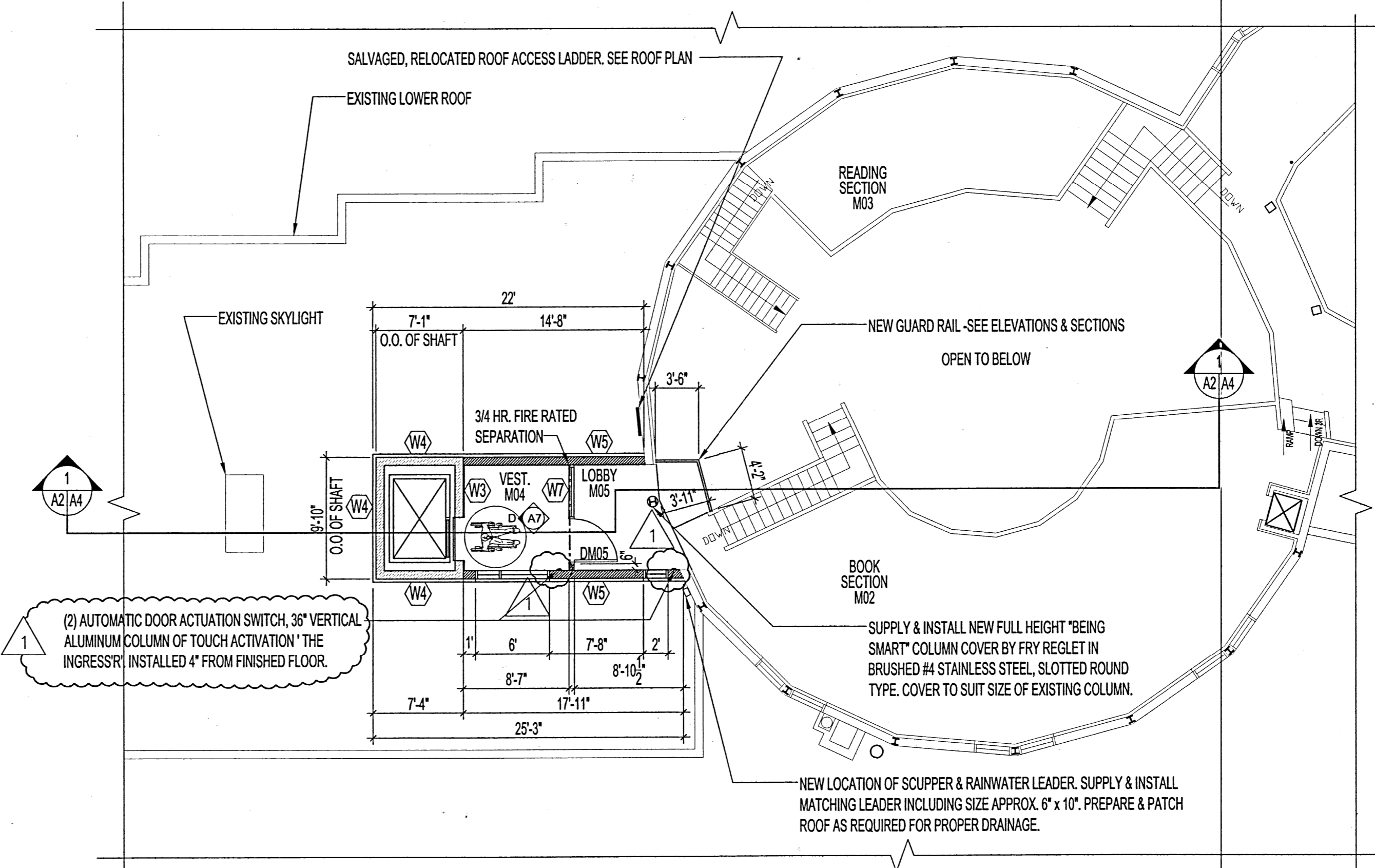
NOTES:
SEE SPECS FOR EIFS WALL SYSTEMS. WALL SYSTEM TO BE INSTALLED ACCORDING TO SPECIFICATIONS OUTLINED AND MANUFACTURERS RECOMMENDATIONS.



1 BASEMENT PLAN - RENOVATION
SCALE 1/4" = 1'-0"
(2) AUTOMATIC DOOR ACTUATION SWITCH, 36" VERTICAL ALUMINUM COLUMN OF TOUCH ACTIVATION 'THE INGRESS'R'. INSTALLED 4" FROM FINISHED FLOOR.



1 MAIN FLOOR PLAN - RENOVATION
SCALE 1/4" = 1'-0"



1 MEZZANINE FLOOR PLAN - RENOVATION
SCALE 1/4" = 1'-0"

No.	REVISION/DESCRIPTION	BY	DATE
1	-CHANGE CONTROL CLOSET B20 NAME TO STORAGE CLOSET B20		MMK 2014.10.06
	-VEST. M04 & LOBBY M05: MOTION DOOR OPENERS DELETED & CHANGED TO AUTOMATIC DOOR OPENERS WITH 36" HIGH WALL MOUNTED PILLARS AS SHOWN ON DWG.		



DRAWN	CHECKED	DESIGNED	APPROVED
MMK			
DATE: 2014.07.11	USER APPROVAL		

THE CITY OF WINNIPEG
PLANNING, PROPERTY AND
DEVELOPMENT DEPARTMENT
MUNICIPAL ACCOMMODATIONS DIVISION
3-65 GARRY STREET, R3C 4K4

PROJECT
**ST. VITAL LIBRARY
NEW ELEVATOR INSTALLATION**

6 FERMOR AVENUE
SHEET TITLE
PARTIAL BASEMENT, MAIN
& MEZZANINE FLOOR PLANS
-RENOVATION

SCALE	PROJECT No:	SHEET No:
AS SHOWN		A2R1

DRAWING SHEET SIZE: A1 (841mm x 594mm) PLOT 1:1