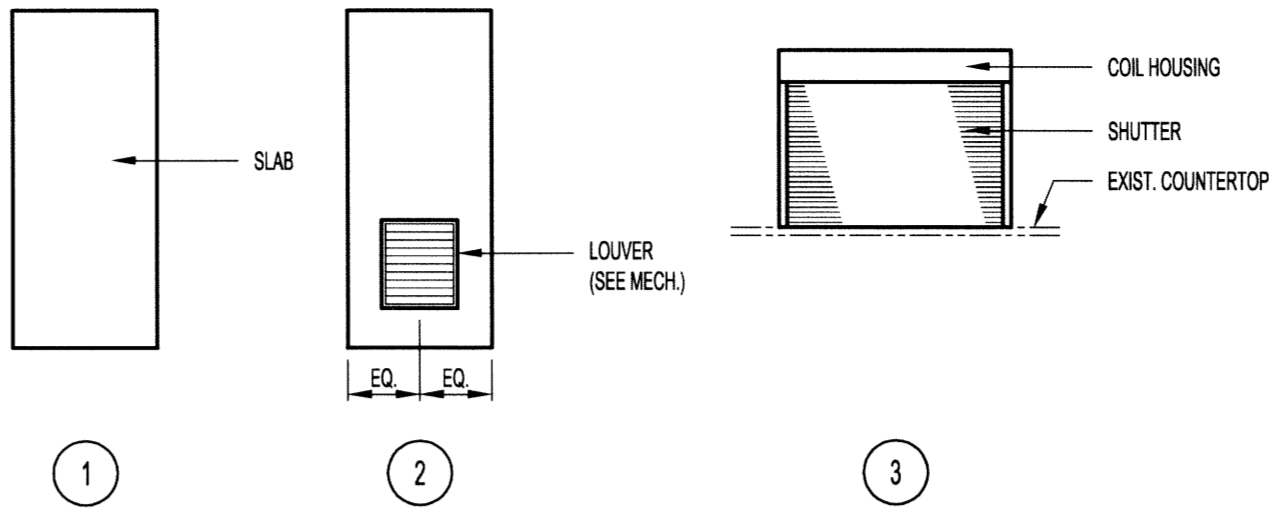


FILE NAME: 14-0107-021\_B21.dwg DATE: 2014.10.27 SHEET TITLE: SCHEDULES PROJECT No: 2013-73 ADDRESS: 381 SHERBROOK STREET

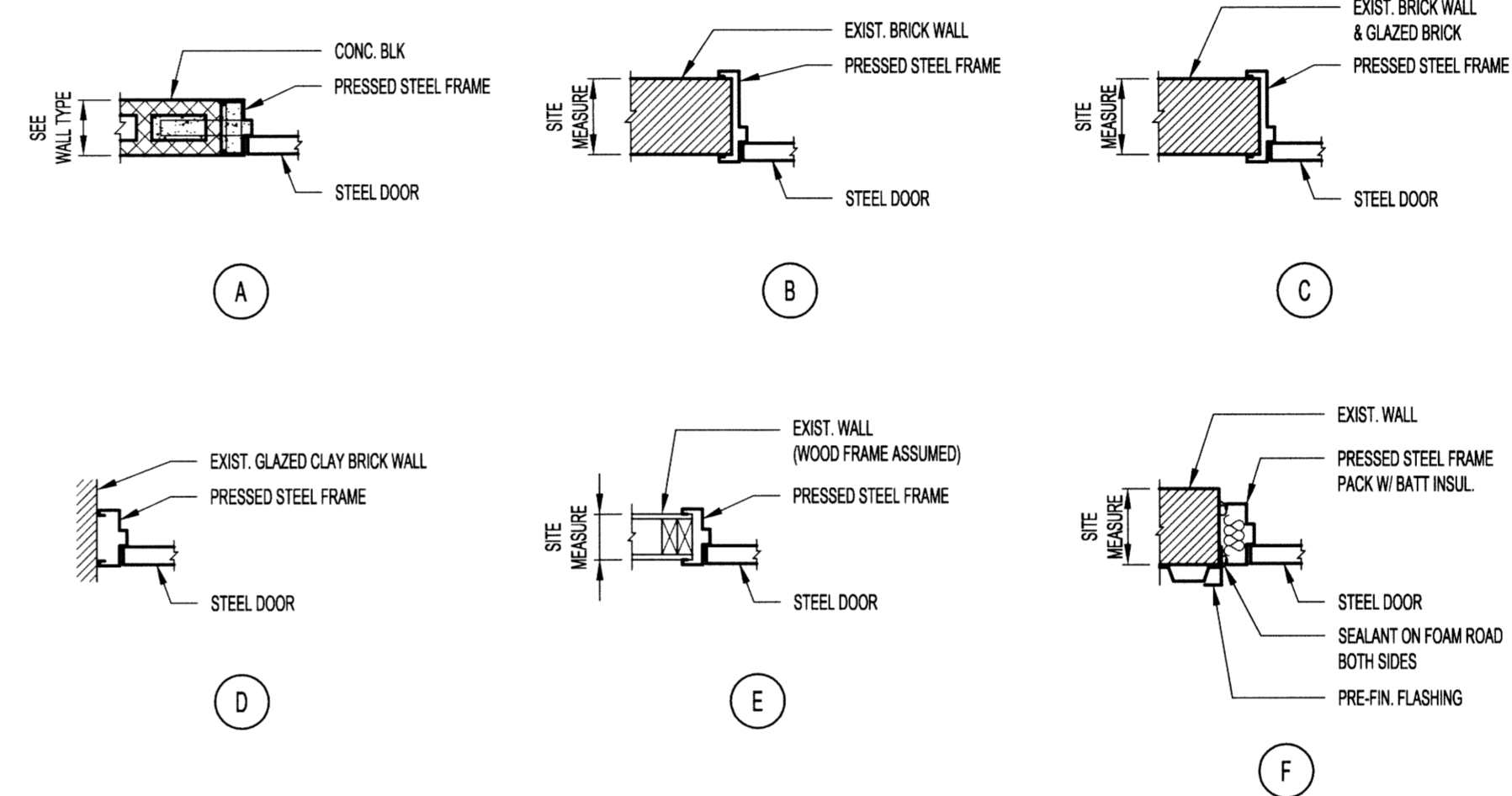
DOOR SCHEDULE												
DOOR NO.	DOOR						FRAME				FIRE RATING (HOURS)	DOOR HARDWARE SET
	SIZE	ELEV.	MATL.	CORE	FINISH	REMARKS	SECT.	MATL.	FINISH	REMARKS		
D-B01	3'-0" x 7'-0" x 1 3/4"	1	STL	KHC	P	TO MATCH EXIST.	A	STL	P	TO MATCH EXIST.	3/4	01
D-B04	4'-2" x 7'-0" x 1 3/4" (SITE CONFIRM)	1	STL	KHC	P	TO MATCH EXIST.	B	STL	P	TO MATCH EXIST.	3/4	02
D-B05	4'-2" x 7'-0" x 1 3/4" (SITE CONFIRM)	1	STL	KHC	P	TO MATCH EXIST.	C	STL	P	TO MATCH EXIST.	3/4	03
D-B06	4'-3" x 8'-0" x 1 3/4" (SITE CONFIRM)	2	STL	KHC	P	TO MATCH EXIST.	D	STL	P	TO MATCH EXIST.	-	04
D-112A	4'-4" x 10'-0" x 1 3/4" (SITE CONFIRM) ROLL-UP SHUTTER	3	STL	-	PF	TO MATCH EXIST.	-	STL	PF	TO MATCH EXIST.	-	05
D-112B	4'-4" x 10'-0" x 1 3/4" (SITE CONFIRM) ROLL-UP SHUTTER	3	STL	-	PF	TO MATCH EXIST.	-	STL	PF	TO MATCH EXIST.	-	06
D-114	4'-2" x 7'-0" x 1 3/4" (SITE CONFIRM)	1	STL	KHC	P	TO MATCH EXIST.	E	STL	P	TO MATCH EXIST.	3/4	06
D-120	3'-0" x 7'-0" x 1 3/4"	1	STL	KHC	P	ENLARGE EXIST. DOOR OPENG	E	STL	P	TO MATCH EXIST.	-	07
D-121	3'-0" x 7'-0" x 1 3/4"	1	STL	KHC	P	ENLARGE EXIST. DOOR OPENG	E	STL	P	TO MATCH EXIST.	-	07
D-202	4'-2" x 7'-0" x 1 3/4" (SITE CONFIRM)	1	STL	KHC	P	TO MATCH EXIST.	B	STL	P	TO MATCH EXIST.	3/4	08
D-209	4'-2" x 7'-0" x 1 3/4" (SITE CONFIRM)	1	STL	KHC	P	TO MATCH EXIST.	E	STL	P	TO MATCH EXIST.	3/4	08
D-R01	4'-3" x 7'-0" x 1 3/4" (SITE CONFIRM)	1	STL	INSUL.	P	TO MATCH EXIST.	F	STL	P	TO MATCH EXIST.	-	09



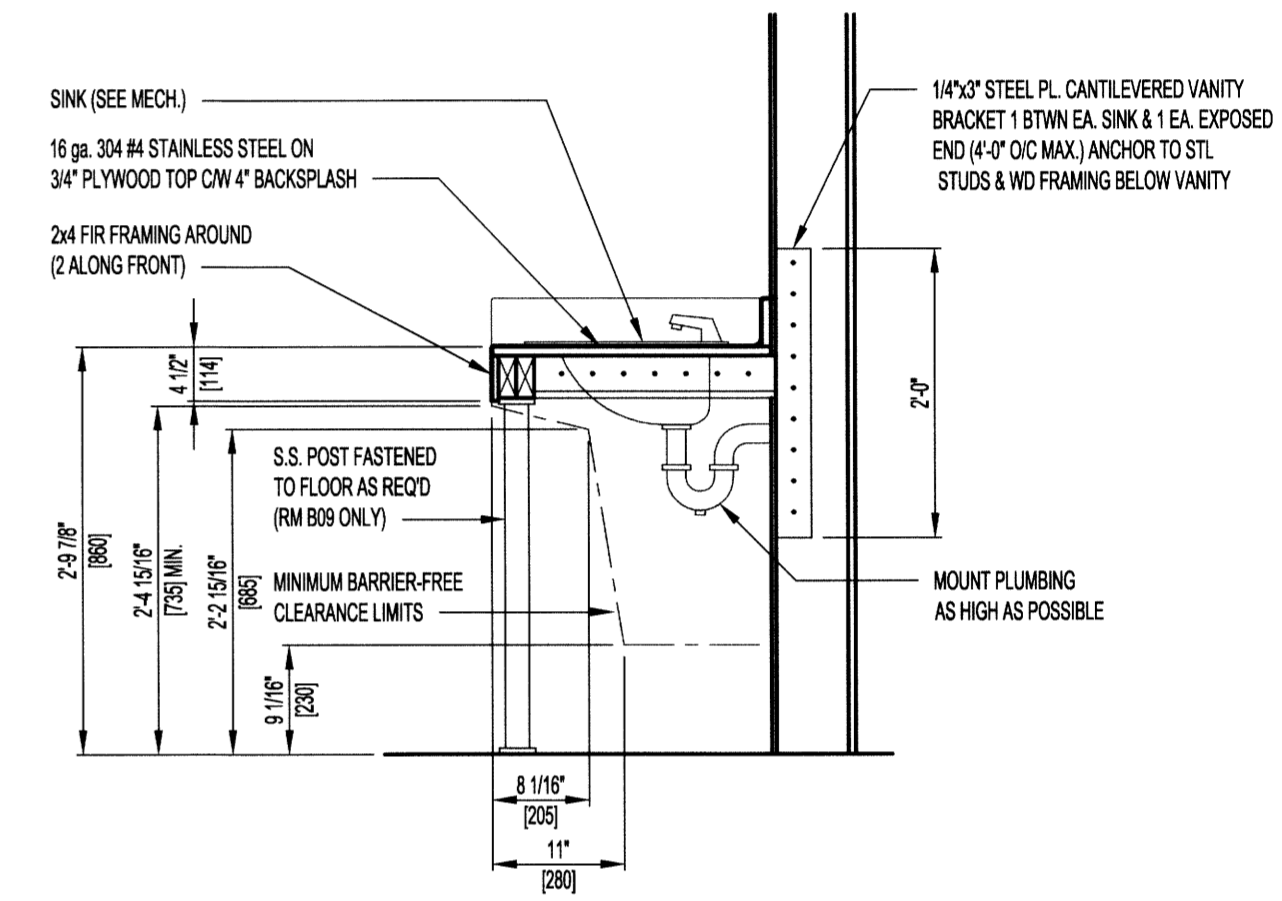
DOOR ELEVATIONS  
SCALE: 1/4"=1'-0"

- DOOR HARDWARE:
- ALL DOOR HARDWARE AS SPECIFIED OR APPROVED EQUAL IN ACCORDANCE WITH B7.
  - AUTO OPERATOR APPROVED ALTERNATE:  
- HORTON AUTOMATIC 7100 AS MANUFACTURED BY HORTON AUTOMATICS.  
- BESAM MODEL SW100 AUTOMATIC DOOR OPERATOR AS MANUFACTURED BY ASSA ABLLOY ENTRANCE SYSTEMS.  
- GYRO TECH G1850 HEAVY DUTY DOOR OPERATOR AS MANUFACTURED BY NABCO ENTRANCES INC.

DOOR HARDWARE SCHEDULE:			
<b>HARDWARE SET No. 01</b>			
3 EA. HINGE	5B81 4.5 X 4	652	
1 EA. FIRE EXIT HARDWARE	F-25-R-NL	630	
1 EA. SURFACE CLOSER	SC71 HDPA	689	
1 EA. KICK PLATE	8400 10"x1 1/2" LDW BAE	630	
1 EA. WALL STOP	WS406/407CVX	360	
1 SET SMOKE SEAL	W-21	BLK	
<b>HARDWARE SET No. 02</b>			
3 EA. HINGE	5B81 4.5 X 4	630	
1 EA. STOREROOM LOCK	WS81P8 DANE	626	
1 EA. SURFACE CLOSER	SC71 REG	689	
1 EA. KICK PLATE	8400 10"x1 1/2" LDW BAE	360	
1 EA. WALL STOP	WS406/407CVX	360	
1 SET SMOKE SEAL	W-21	BLK	
<b>HARDWARE SET No. 03</b>			
3 EA. HW HINGE	5B81 4.5 X 4	652	
1 EA. FIRE EXIT HARDWARE	F-25-R-TP-BE	630	
1 EA. OH STOP	410S	630	
1 EA. SURFACE CLOSER	SC71 HDPA	689	
1 EA. KICK PLATE	8400 10"x1 1/2" LDW BAE	630	
1 SET SMOKE SEAL	W-21	BLK	
<b>HARDWARE SET No. 04</b>			
3 EA. HINGE	5B81 4.5 X 4	652	
1 EA. CLASSROOM LOCK	WS61P8 DANE	626	
1 EA. SURFACE CLOSER	SC81 HDPA	689	
1 EA. KICK PLATE	8400 10"x1 1/2" LDW BAE	630	
1 EA. WALL STOP	WS406/407CVX	630	
<b>HARDWARE SET No. 05</b>			
3 EA. HINGE	5B81 4.5 X 4	652	
1 EA. FIRE EXIT HARDWARE	F-25-R-TP-BE	630	
1 EA. SURFACE CLOSER	SC81 HDPA	689	
1 EA. KICK PLATE	8400 10"x1 1/2" LDW BAE	630	
1 SET SMOKE SEAL	W-21	BLK	
<b>HARDWARE SET No. 06</b>			
3 EA. HINGE	5B81 4.5 X 4	652	
1 EA. ENTRY/OFFICE LOCK	WS11P8 DANE	626	
1 EA. OH STOP	410S	630	
1 EA. SURFACE CLOSER	SC71 HDPA	689	
1 EA. KICK PLATE	8400 10"x1 1/2" LDW BAE	630	
1 SET SMOKE SEAL	W-21	BLK	
<b>HARDWARE SET No. 07</b>			
3 EA. HINGE	5B81 4.5 X 4	630	
1 EA. PRIVACY LOCK	WS31S DANE	626	
1 EA. ELECTRIC STRIKE	6211-FSE-24VDC	630	
1 EA. INTERFACE BOX	JB7	GRAY	
1 EA. MORTAR GUARD	TAC-LD1-ES		
1 EA. AUTO OPERATOR	9131 REG (SEE NOTE 2)	689	
2 EA. ACTUATOR	8310-536T 3P	630	
1 EA. KICK PLATE	8400 10"x1 1/2" LDW BAE	630	
1 EA. OH STOP	410S	630	
1 EA. PUSH TO LOCK BUTTON	CM-400B	630	
1 EA. LED ANNUNCIATOR	CM-AF500	630	
1 EA. WASHROOM RELAY	EMF-2		
1 EA. DOOR CONTACT	678-05HM	BLK	
1 EA. MORTAR GUARD	TAC-LD1-DC		
<b>HARDWARE SET No. 08</b>			
3 EA. HINGE	5B81 4.5 X 4	652	
1 EA. FIRE EXIT HARDWARE	F-25-R-TP-BE	630	
1 EA. SURFACE CLOSER	SC81 HDPA	689	
1 EA. KICK PLATE	8400 10"x1 1/2" LDW BAE	630	
1 EA. WALL STOP	WS406/407CVX	630	
1 SET SMOKE SEAL	W-21	BLK	



FRAME SECTIONS  
SCALE: 3/4"=1'-0"



TYPICAL VANITY SECTION  
SCALE: 3/4"=1'-0"

FINISH SCHEDULE				
No./ITEM	DESCRIPTION	COLOUR	REMARKS	
<b>PAINT</b>				
PT1	WALLS	TBD	ROOM 108	
PT2	CEILING	TBD	ROOM 108	
PT3	MENS SHOWER ROOM CEILING	MATCH EXIST.		
PT4	PERSONNEL DOORS	MATCH EXIST.		
PT5	STEEL GUARDRAIL	TBD		
PT6	MEZZANINE WASHROOM	MATCH EXIST.		
PT7	SLOPED CONCRETE FLOOR	TBD		
<b>FLOOR FINISH</b>				
EP1	STONTEC EFC	GLACIER PEAK	MENS SHOWER AREA	
EP2	STONTEC EFC	GLACIER PEAK	WOMENS SHOWER AREA	
<b>WALL FINISH</b>				
WP1	PVC WALL PANELS	WHITE	ROOMS B08, B09 & B16	
<b>MISCELLANEOUS</b>				
MP1	TOILET PARTITIONS	SOLID PLASTIC TOILET PARTITIONS	TBD	ROOM B16
MP2	SECURITY SHUTTER	WHITE	ROOM 112	
MP3	BLEACHERS			
MP4	BLEACHER SUPPORT FRAMING	STEEL FRAMING	GALVANIZED	
MP5	ACOUSTIC PANELS	WILLTEC	WHITE	
MP6	EXIT STARS	STEEL FRAMING	GALVANIZED	

- FINISHES:
- ALL FINISHES AS SPECIFIED OR APPROVED EQUAL IN ACCORDANCE WITH B7.

WASHROOM HARDWARE AND ACCESSORIES					ROOM					
DESCRIPTION	SUPPLIER / MANUFACTURER	MODEL NO.	MOUNTING HEIGHT	QUANTITY						
				B08	B09	B16	B18	B19	B20	
PAPER TOWEL DISPENSER	N.I.C.				1	1	1	1	1	1
LIQUID SOAP DISPENSER	N.I.C.				1	1	1	1	1	1
TOILET TISSUE DISPENSER	N.I.C.					3				1
ELECTRIC AIR DRYER CW SWIVEL OUTLET	WORLD DRYER	XA	5'-0" A.F.F.	2	2	2			1	1
MIRROR (18" W x 36" H)	BOBRICK	B-165 1636	3'-6" A.F.F.				2			
MIRROR (24" W x 36" H)	BOBRICK	B-165 2436	3'-6" A.F.F.	2	4					1
FIXED TLT MIRROR (24" W x 36" H)	BOBRICK	B283 2436	2'-9" 1/4" A.F.F.						1	1
LOCKER ROOM BENCH (36" LONG, FIXED TO FLOOR)	SHANAHANS	LRB-8E-S-36	FASTEN TO FLOOR	2	4					
COAT HOOK	FROST	1150	5'-0" A.F.F.	2	4					
SHOWER CURTAIN CW HOOKS	SHANAHANS	F1144-503 & F1145-725S		2	4			1	1	
S/S SHELF	BOBRICK	B298-24	3'-4" A.F.F.	2						

- WASHROOM HARDWARE AND ACCESSORIES NOTES:
- ALL WASHROOM HARDWARE AND ACCESSORIES LISTED ABOVE SHALL BE CORROSION PROOF AND AS SPECIFIED OR APPROVED EQUAL IN ACCORDANCE WITH B7.
  - MOUNTING HEIGHT TO SUIT BARRIER-FREE INSTALLATION IN ROOMS 120 & 121. MOUNTING HEIGHTS INDICATED ARE FROM BOTTOM OF ITEM.
  - LOCKER ROOM BENCH APPROVED ALTERNATE:  
- HADRIAN LOCKER BENCH AS MANUFACTURED BY HADRIAN INC.
  - SHOWER CURTAIN & HOOK APPROVED ALTERNATES:  
- BOBRICK B-204-3 & B-204-1 AS MANUFACTURED BY BOBRICK WASHROOM EQUIPMENT INC.

NOTES:  
THESE DRAWINGS SHALL NOT BE SCALED.  
THE CONTRACTOR SHALL VISIT THE SITE AND SATISFY HIMSELF ALL DIMENSIONS, DATUM, AND DETAILED INFORMATION SHOWN ARE CORRECT.  
THE CONTRACTOR IS TO REVIEW AND COORDINATE ALL ARCHITECTURAL, MECHANICAL, ELECTRICAL AND STRUCTURAL DRAWINGS FOR ADDITIONAL OPENINGS THROUGH FLOORS, WALLS, AND CEILINGS FOR DUCT, PIPE & ELECTRICAL RISERS AND ALL OPENINGS NOT SHOWN ON DRAWINGS.  
ALL OPENINGS THROUGH FIRE ASSEMBLIES ARE TO BE FIRE STOPPED AND SEALED WITH UL-C APPROVED FIRE STOPPING TO MAINTAIN THE INTEGRITY OF THE FIRE SEPARATION, AND PROVIDE A SMOKE-TIGHT BARRIER.  
ALL PRODUCTS AND MATERIALS TO BE USED AND INSTALLED SHALL CONFORM WITH MANUFACTURER'S SPECIFICATIONS & APPLICABLE CODES.  
THE CONTRACTOR SHALL BE RESPONSIBLE TO PATCH AND MAKE GOOD ALL EXISTING CONSTRUCTION AFFECTED BY THE REMOVAL OF ALL ITEMS FORMING THE PART OF THE RENOVATION WORK.  
WHERE NEW FLOORING AND BASE IS TO BE INSTALLED IN EXISTING AREAS (REFER TO FLOOR PLAN AND ROOM SCHEDULE) THE EXISTING FLOORING SURFACE AND BASE MUST BE REMOVED, UNLESS OTHERWISE NOTED. ALL FLOOR SURFACES SHALL BE PREPARED IN ACCORDANCE TO MANUFACTURER'S RECOMMENDATIONS FOR INSTALLATION OF NEW FLOOR.  
WHERE PAINTING OF EXISTING WALLS IS INDICATED ON THE ROOM SCHEDULE, THESE WALLS MUST BE CLEANED OF ANY EXISTING WALL COVERING, PATCHED & PREPARED TO ACCEPT NEW MATERIAL, UNLESS OTHERWISE NOTED.

No.	REVISION/DESCRIPTION	BY	DATE
1	RE-ISSUED FOR CONSTRUCTION		15.03.11
0	ISSUED FOR CONSTRUCTION	R.L.	15.02.17



DATE	USER	APPROVAL
2014.10.27		

THE CITY OF WINNIPEG  
PLANNING, PROPERTY AND  
DEVELOPMENT DEPARTMENT  
MUNICIPAL ACCOMMODATIONS DIVISION  
3-65 GARRY STREET, R3C 4K4

PROJECT  
**SHERBROOK POOL**  
REFURBISHMENT OF SHERBROOK POOL

381 SHERBROOK STREET  
SHEET TITLE

BUILDING  
SCHEDULES

SCALE	PROJECT No:	SHEET No:
AS SHOWN	2013-173	B21

