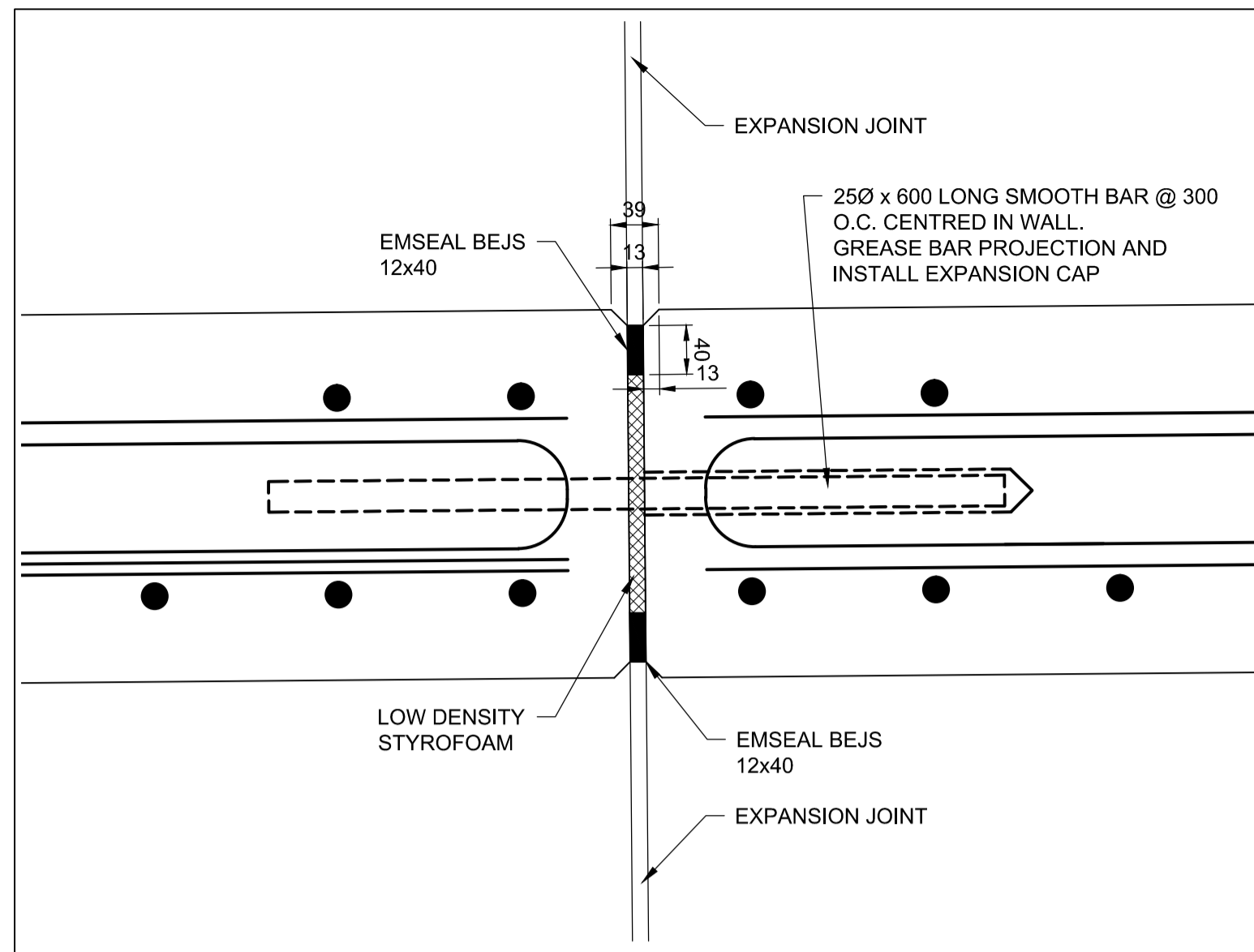
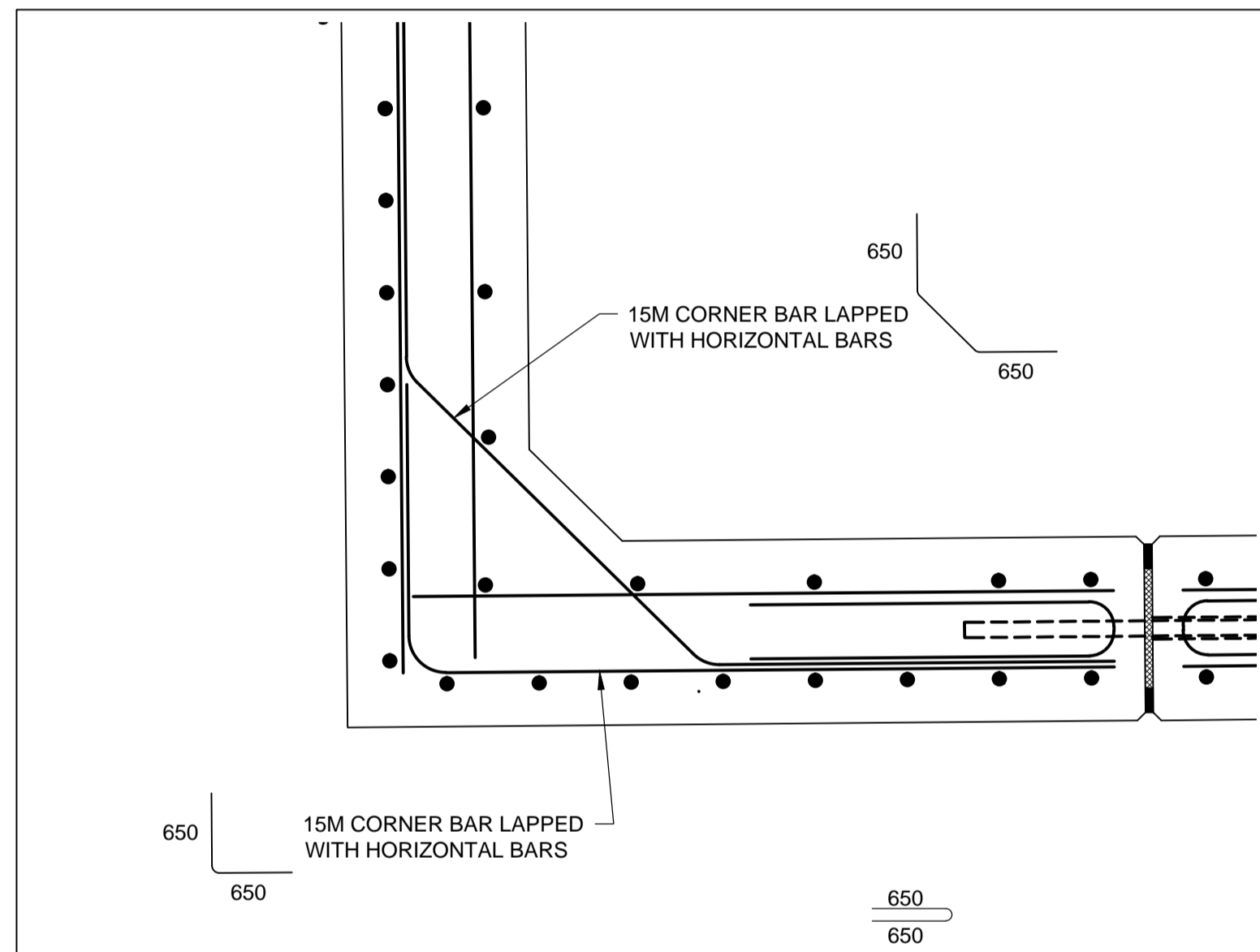


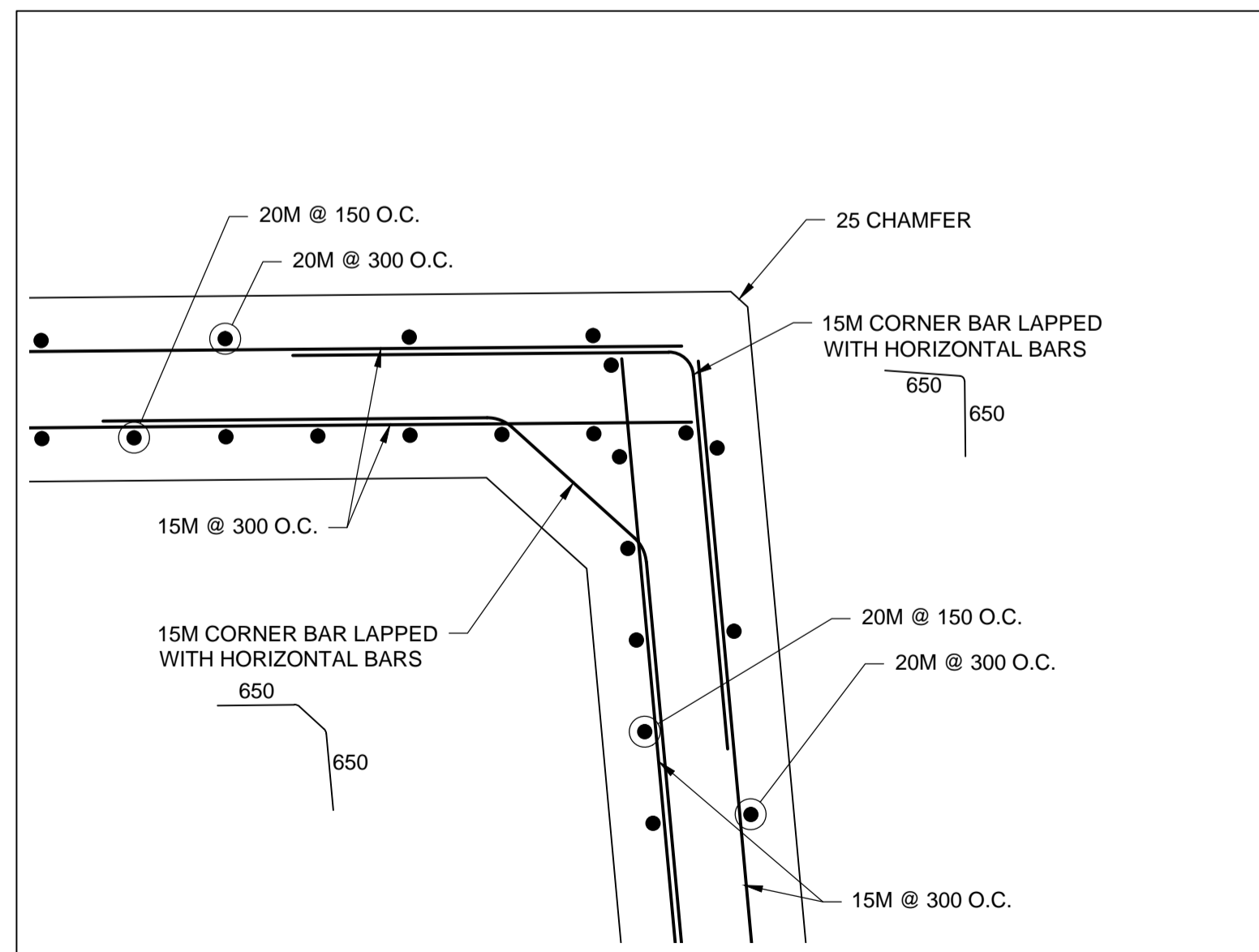
1 PLAN DETAIL
S3 1:10



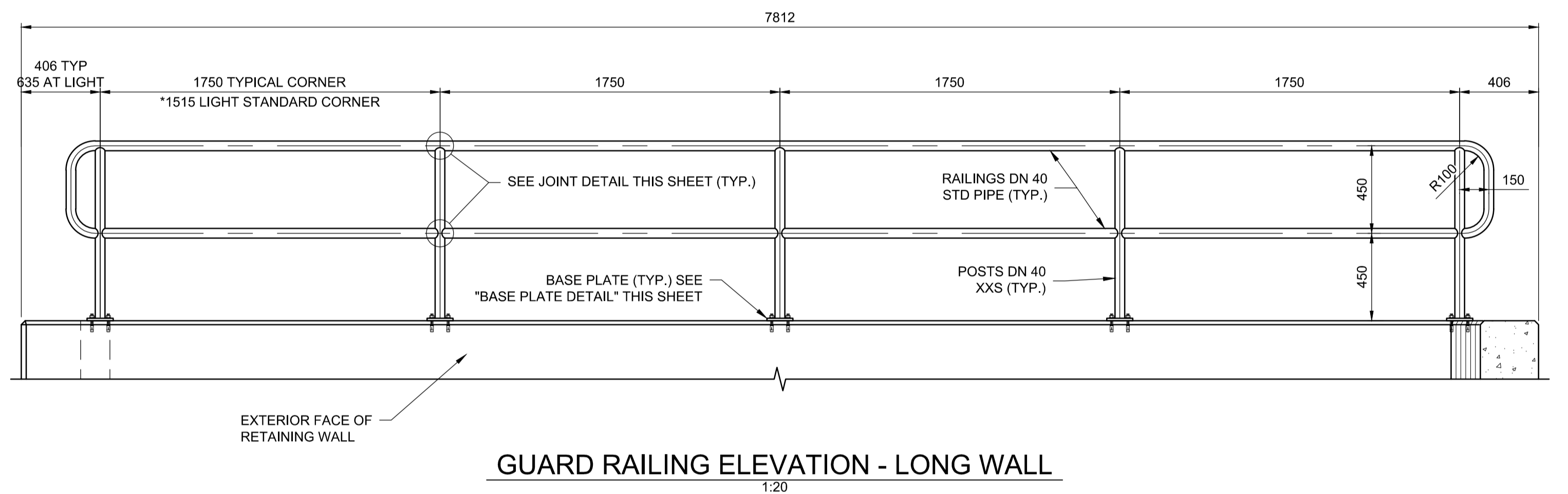
4 EXPANSION JOINT DETAIL
S5 1:5



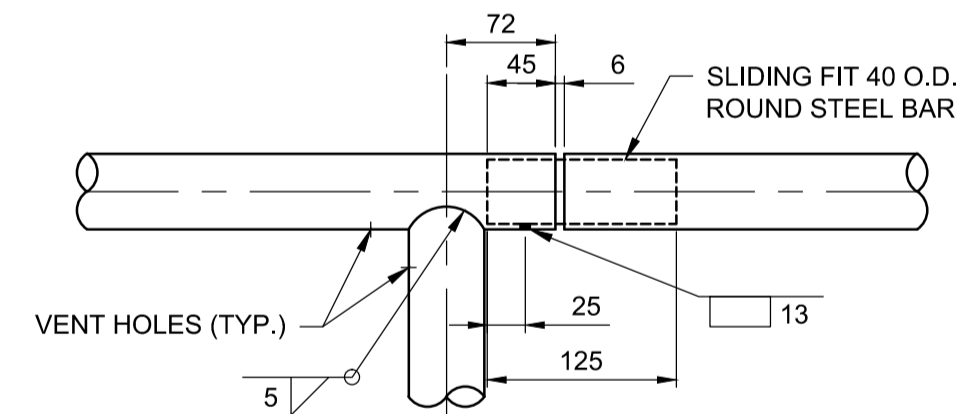
2 PLAN DETAIL
S3 1:10



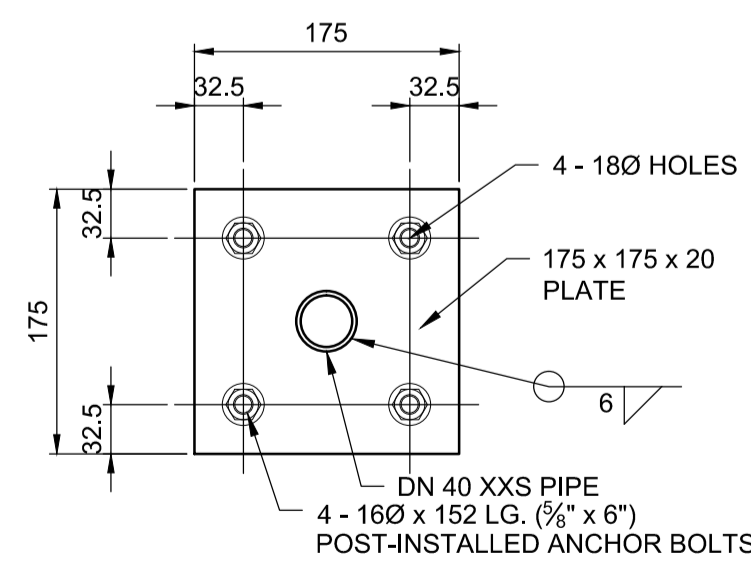
3 PLAN DETAIL
S3 1:10



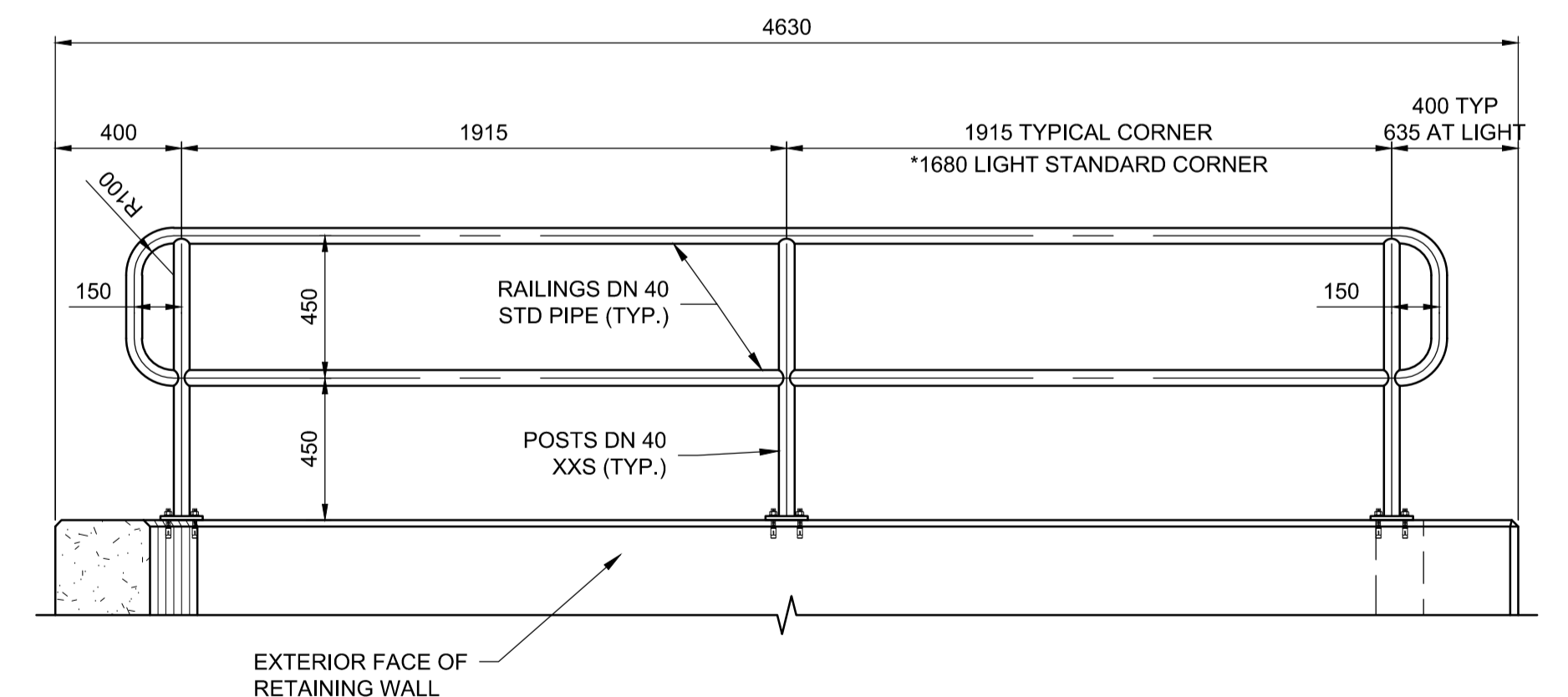
GUARD RAILING ELEVATION - LONG WALL
1:20



JOINT DETAIL
1:5



BASE PLATE DETAIL
1:5



GUARD RAILING ELEVATION - SHORT WALL METRIC
1:20

*NOTE: FOR DIMENSIONS INDICATED, VERIFY GAP BETWEEN LIGHT STANDARDS AND RAILING MAX 100mm.

WHOLE NUMBERS INDICATE MILLIMETRES
DECIMALIZED NUMBERS INDICATE METRES



NO.	REVISIONS	DATE	BY	DATE
2	ISSUED FOR ADDENDUM # 1	16/03/14	ARR	
1	ISSUED FOR TENDER	16/03/04	ARR	

DESIGNED BY	WH
DRAWN BY	PDR
CHECKED BY	NR
APPROVED BY	ARR
HOR. SCALE	AS NOTED
VERTICAL	VERTICAL

DILLON CONSULTING

RELEASED FOR CONSTRUCTION

DATE

ENGINEER'S SEAL

PROVINCE OF MANITOBA
ORIGINAL STAMPED BY
RATTANWANICHROEN
MARCH 4/16
Member
23609
REGISTERED PROFESSIONAL ENGINEER

CONSULTANT PROJECT NUMBER
13-8224

THE CITY OF WINNIPEG
PUBLIC WORKS DEPARTMENT

Winnipeg

4R WINNIPEG DEPOT
PACIFIC AVENUE

CITY DRAWING NUMBER
1-0851A-S0004-001

SHEET 12 OF 43

CONSULTANT DRAWING NUMBER
S-4

**RETAINING WALL PLAN DETAILS,
RAILING ELEVATIONS AND DETAILS**

C:\projects\win\working_directory\active\4046\138224-09-STRUCT-COIN-PACIFIC.dwg