

<b>PANEL 'A'</b>	VOLTAGE	120/240V-1PH-3W		
<b>MOUNTING SURFACE</b>	MAIN BUS	200A		
<b>LOCATION SERVICE ROOM</b>	REMARKS	C/W 200A-2P MAIN C.B.		
DESCRIPTION	BKR	CIRCUIT	BKR	DESCRIPTION
EXTERIOR LIGHTING	15	1	2	FORCE FLOW HEATER
LIGHTING	15	3	4	
H/C DOOR OPERATOR	15	5	6	FORCE FLOW HEATER
H/C DOOR OPERATOR	15	7	8	
H/C DOOR OPERATOR	15	9	10	FORCE FLOW HEATER
RECEPTACLES	15	11	12	
SC RECEPTACLE	15	13	14	FORCE FLOW HEATER
WP GF RECEPTACLE	15	15	16	
HAND DRYER	20	17	18	FORCE FLOW HEATER
HAND DRYER	20	19	20	
HAND DRYER	20	21	22	BASEBOARD HEATER
SF-1	15	23	24	
SP-1	20	25	26	SPACE
SPARE	15	27	28	RELOCATED SHELTER CIRCUIT
EF-1	15	29	30	RELOCATED SHELTER CIRCUIT
HWT-1	20	31	32	RELOCATED SHELTER CIRCUIT
		33	34	RELOCATED SHELTER CIRCUIT
EHC-1		35	36	SPARE
#10 WIRE		37	38	SPARE
SPACE		39	40	SPARE
SPACE		41	42	SPARE

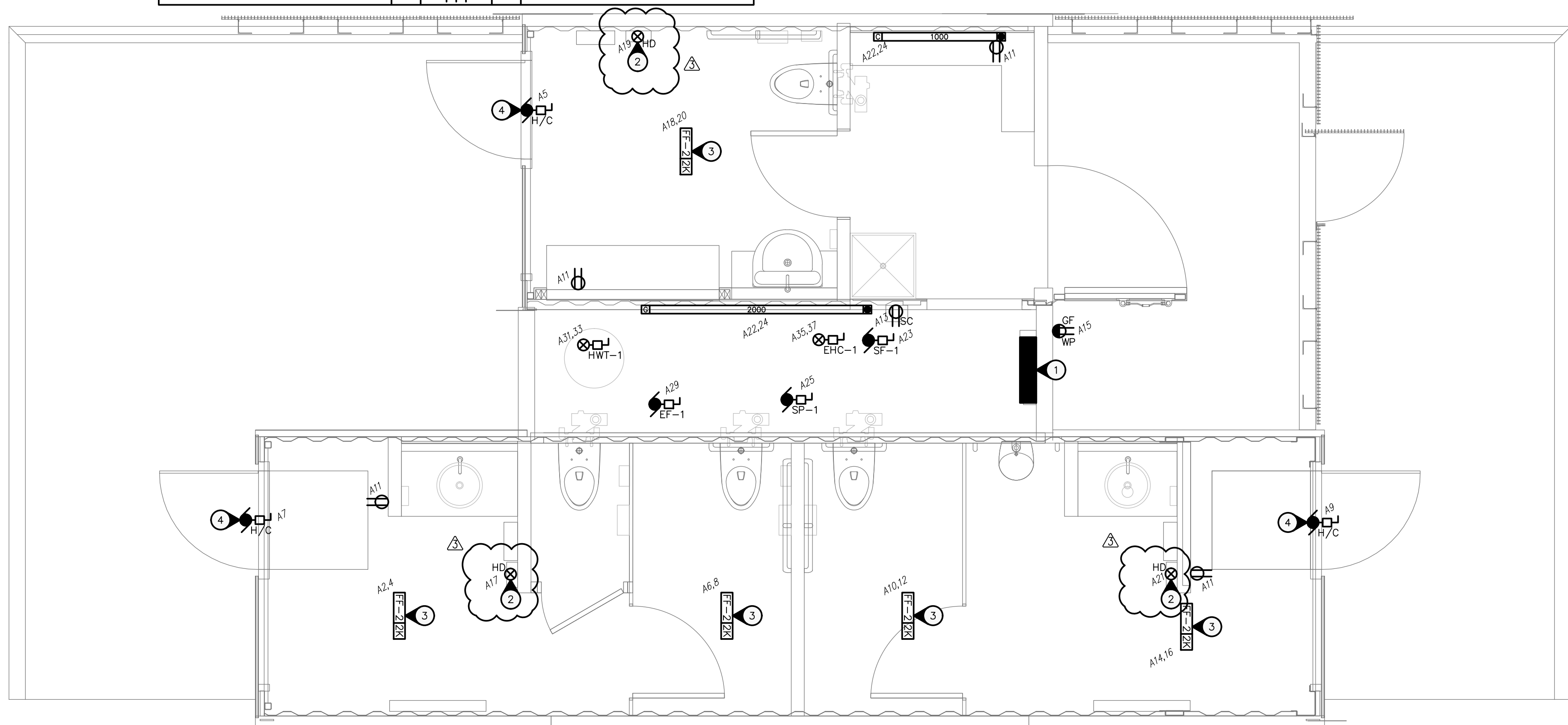
MOTOR SCHEDULE								
NO.	DESCRIPTION	LOCATION	VOLTAGE	HP/W/MCA	C.B.	COND.	STARTER	NOTES
EF-1	EXHAUST FAN	SERVICE CORRIDOR	120V-1PH	1.2 A	15A-1P	#12	TIMECLOCK	1,3
SF-1	SUPPLY FAN	SERVICE CORRIDOR	120V-1PH	1.2 A	15A-1P	#12	TIMECLOCK	1,3
EHC-1	ELECTRIC HEATING COIL	SERVICE CORRIDOR	240V-1PH	4 KW	30A-2P	#10	-	1
HWT-1	HOT WATER TANK	SERVICE CORRIDOR	240V-1PH	3 KW	20A-2P	#12	-	1
SP-1	SUMP PUMP	CRAWLSPACE	120V-1PH	1/2 HP	20A-1P	#12	MANUAL	1,2,3,4

**SPECIFIC NOTES**  
1. WIRE AND CONNECT AS REQUIRED. REFER TO MECHANICAL.  
2. MANUAL STARTER BY ELECTRICAL.  
3. TIMECLOCK BY MECHANICAL. WIRED BY ELECTRICAL.  
4. WIRE ALL CONTROL ALARMS AS REQUIRED (SEE MECHANICAL).

**GENERAL NOTES**  
A. MANUAL STARTERS TO BE C/W OVERCURRENT PROTECTION.  
B. ALL DISCONNECT SWITCHES TO BE SUPPLIED BY DIV. 16.  
C. ELECTRICAL CONTRACTOR TO PROVIDE CIRCUIT BREAKERS AND WIRING ACCORDING TO THE FINAL NAMEPLATES OF ALL THE MECHANICAL EQUIPMENT.  
D. ALL LOW VOLTAGE CONTROL WIRING BY DIV. 15.  
E. ALL LINE VOLTAGE CONTROL WIRING BY DIV. 16 - REFER TO MECHANICAL SECTION. CO-ORDINATE EXACT REQUIREMENTS WITH DIV. 15.

Owner  
City of Winnipeg  
190 River Road, Winnipeg, MB

No.	Date	Revision Notes
1.	2015.04.10	Issued for 66% REVIEW
2.	2015.05.08	Issued For Construction
3.	2015.06.16	Issued For Addendum #1



PROVINCE OF MANITOBA  
**THIELMANN**  
2015.06.18  
REGISTERED ENGINEER

**PEGM**  
Certificate of Authorization  
Nova 3 Engineering Ltd.  
No. 962 Date: 2015.06.18

This drawing must not be sealed. The contractors shall verify all dimensions and other data on site prior to commencement of work. Discrepancies, errors, and omissions are to be reported to the Architect prior to proceeding with the Work.

Drawings and specifications as instruments of service are the property of the Architect; the copyright in the same being reserved to him.

No reproduction or revision to these drawings may be made without the permission of the Architect, and when made, must bear his name. All prints to be returned to the Architect upon request.

Project  
St. Vital Park Washrooms

**1**  
**E2.0**  
**ELECTRICAL - POWER LAYOUT**  
SCALE: 1/30

HEATING SCHEDULE						
TYPE	WATTS	VOLTAGE	DESCRIPTION	MANUFACTURER	CATALOGUE NO.	NOTES
C	1000	240	BASEBOARD	OUELLET	ODB100	1
G	2000	240	BASEBOARD	OUELLET	ODB200	1
FF-2	2000	240	FORCE FLOW	OUELLET	WALL: OACU02000 CEILING: OACPU2000	2

**SPECIFIC HEATING NOTES:**  
1. C/W BUILT-IN THERMOSTAT OR WIRED TO REMOTE THERMOSTAT AS SHOWN ON DRAWINGS.  
2. RECESSED UNLESS OTHERWISE INDICATED. C/W BUILT-IN THERMOSTAT UNLESS OTHERWISE INDICATED

**GENERAL HEATING NOTES:**  
A. VOLTAGE TO BE AS INDICATED ABOVE UNLESS OTHERWISE NOTED ON DRAWINGS.

**SPECIFIC ELECTRICAL NOTES**

- 1. APPROXIMATE LOCATION OF NEW 200A-120/240V-1PH-3W PANEL 'A'.
- 2. PROVIDE 120V POWER SUPPLY FOR XLERATOR HAND DRYER (120V-PH, 12.5A) AS REQUIRED. MODEL #XL-BW-120.
- 3. CEILING MOUNTED FORCE FLOW HEATER.
- 4. WIRE AND CONNECT HANDICAPPED DOOR OPERATOR AND ALL ASSOCIATED CONTROLS AS REQUIRED. CONFIRM REQUIREMENTS ON SITE.

**NOVA 3 ENGINEERING LTD.**  
CONSULTING ENGINEERS

201-120 FORT STREET TEL.: (204) 943-6142  
WINNIPEG, MANITOBA R3C 1C7 FAX.: (204) 942-1276  
WWW.NOVA3.CA JN.: 35055e

THIS DRAWING IS THE EXCLUSIVE PROPERTY OF NOVA 3 ENGINEERING LTD. AND MAY ONLY BE REPRODUCED WITH THE WRITTEN PERMISSION OF NOVA 3 ENGINEERING LTD.

THE CONCEPT AND DESIGN INCORPORATED INTO THIS DRAWING ARE BASED ON INFORMATION PROVIDED BY THE CLIENT AND OTHER RELATED SOURCES. PROFESSIONAL ENGINEER ACCEPTS NO RESPONSIBILITY FOR DRAWING AND DESIGN UNLESS DRAWING IS ACCOMPANIED BY ORIGINAL SEALED LETTER OF INTENT OR EQUIVALENT ACCEPTABLE FACSIMILE. PROFESSIONAL ENGINEER ACCEPTS NO RESPONSIBILITY FOR FINAL INSTALLATION CONFORMANCE WITHOUT ORIGINAL SEALED CERTIFICATE OF INSPECTION OR EQUIVALENT ACCEPTABLE FACSIMILE.

Drawing  
**ELECTRICAL - POWER LAYOUT**

Drawn By  
KC/AJT

Reviewed By  
VJT

Scale  
AS NOTED

Date  
JUNE/2015

Project No.  
1445

File No.  
0

**E2.0**