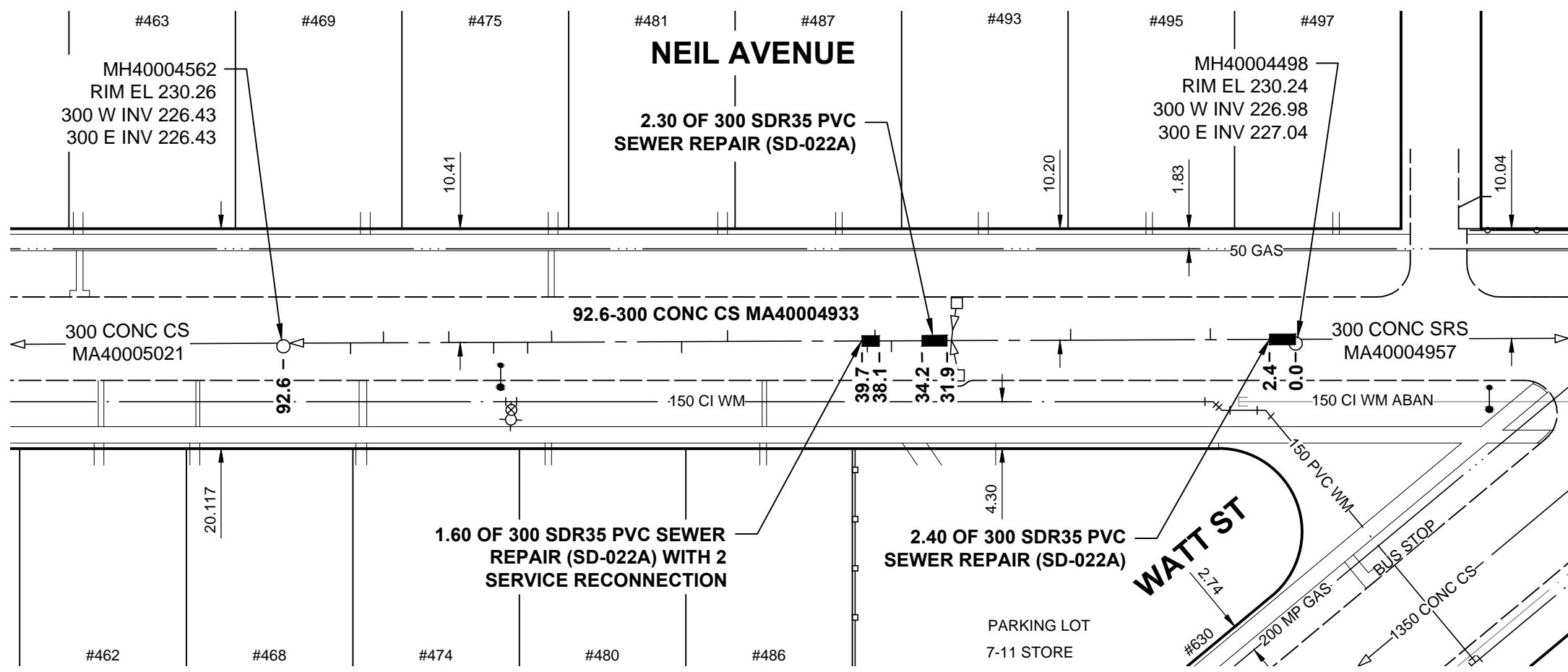


ANSI B SIZE 11" x 17" (279mm x 432mm)

PLOT: 4/7/2015 1:22:00 PM

FILE NAME: W150004 EPR Neil - 03.dwg Saved By: dlane



**PLAN**

SCALE: 1:500



SEWER JUNCTION INFORMATION FROM SEWER VIDEO INSPECTION

SEWER ID MA40004933

DISTANCE FROM MH ID MH40004498		
DISTANCE	DIAMETER	CLOCK
7.8	150	02
20.6	150	02
31.5	150	02
37.0	150	10
38.5	150	02
39.2	150	10
52.0	150	02
56.2	150	10
68.1	150	02
70.3	150	10
73.4	150	10
77.5	150	02
83.5	150	02
86.5	150	10

**METRIC**

WHOLE NUMBERS INDICATE MILLIMETRES  
DECIMALIZED NUMBERS INDICATE METRES



Certificate of Authorization  
**MORRISON HERSHFIELD**  
No. 1736

BID OPPORTUNITY No. 19-2015

**LOCATION APPROVED**  
UNDERGROUND STRUCTURES

SUPR. U/G STRUCTURES COMMITTEE DATE  
**NOTE:**  
LOCATION OF UNDERGROUND STRUCTURES AS SHOWN ARE BASED ON THE BEST INFORMATION AVAILABLE BUT NO GUARANTEE IS GIVEN THAT ALL EXISTING UTILITIES ARE SHOWN OR THAT THE GIVEN LOCATIONS ARE EXACT. CONFIRMATION OF EXISTENCE AND EXACT LOCATION OF ALL SERVICES MUST BE OBTAINED FROM THE INDIVIDUAL UTILITIES BEFORE PROCEEDING WITH CONSTRUCTION.

BM 12-062 ELEV 230.128	N.E. Cor. Watt St. & Kimberly Ave., Tblt. on top of 0.05 m dia. x 2.4 iron pipe, 0.3 m W. of E.L. of Watt St. & on N.L. of Kimberly Ave.		
B	ISSUED FOR TENDER	15/04/07	HAK
A	ISSUED FOR CLIENT REVIEW	15/04/02	HAK
No.	REVISIONS	YY/MM/DD	BY

**MORRISON HERSHFIELD**

DESIGNED BY	MR	CHECKED BY	HAK
DRAWN BY	DML	APPROVED BY	BWB
HOR. SCALE	1:500	RELEASED FOR CONSTRUCTION	
VERT. SCALE			
DATE	15/04/02	DATE	

PROFESSIONAL'S SEAL

H. A. KATZ

CONSULTANT DRAWING No.  
W150004 EPR Neil - 03.dwg

**THE CITY OF WINNIPEG**  
WATER AND WASTE DEPARTMENT

2015 LOCAL STREET & ALLEY RENEWAL PROGRAM

**NEIL AVENUE**

**300 CONCRETE CS POINT REPAIR**  
1st MH W OF WATT ST TO  
2nd MH W OF WATT ST

SHEET	OF
5	5
CITY DRAWING NUMBER	
<b>10993</b>	