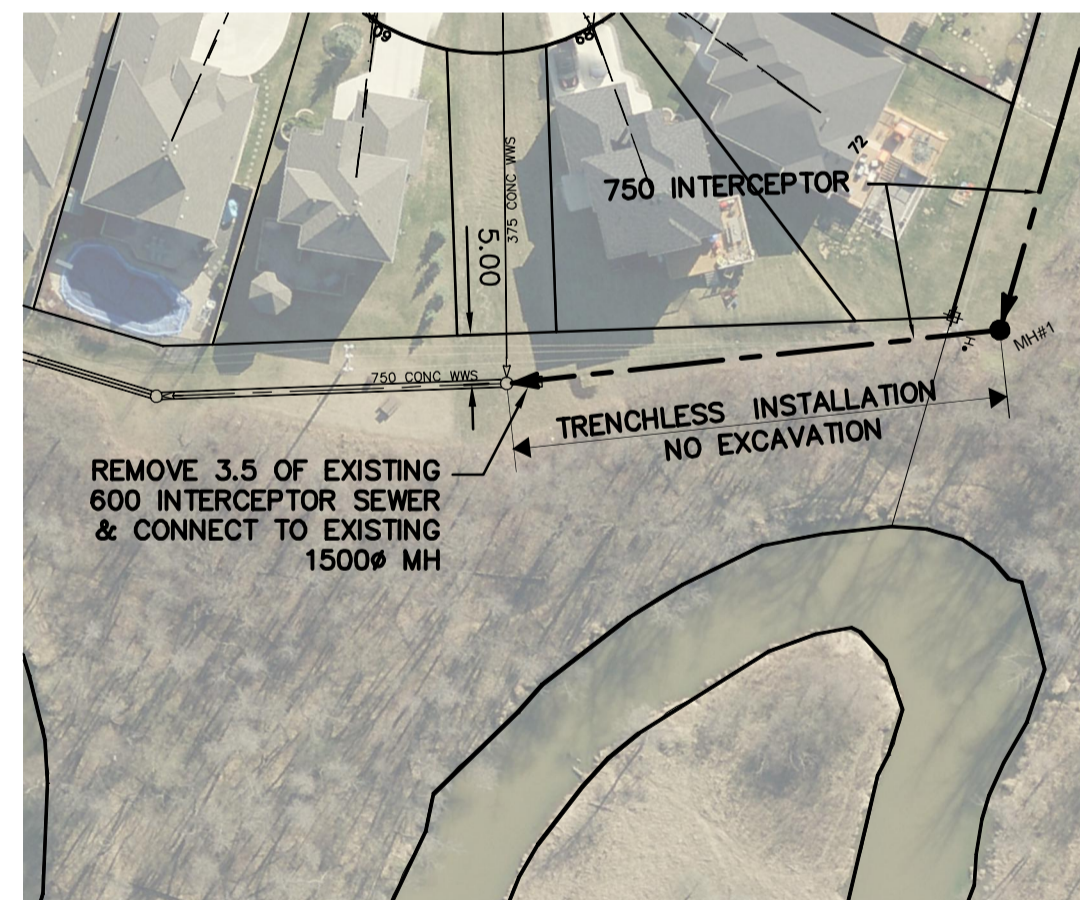
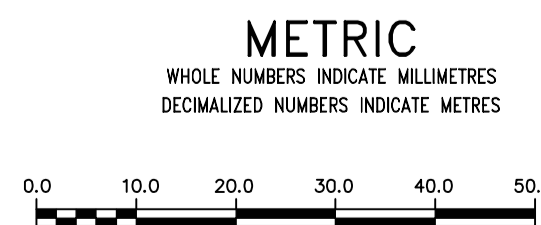


NOTE: CHAINAGES SHOWN ARE ALONG
 CL OF PIPE.



FOR CONTINUATION SEE
 DWG 10969



WARNING
 IF POWER EQUIPMENT OR EXPLOSIVES ARE TO BE USED FOR EXCAVATION ON THIS PROJECT THE CONTRACTOR MUST:
 1) NOTIFY THE GAS COMPANY OF THE PROPOSED LOCATION OF EXCAVATION.
 2) TAKE PRECAUTION TO AVOID DAMAGE TO GAS COMPANY INSTALLATIONS.
 SEE PROVINCIAL REGULATION 21072 FOR DETAILS

LOCATION APPROVED UNDERGROUND STRUCTURES
 SUPV. U/G STRUCTURES COMMITTEE DATE
 NOTE:
 LOCATION OF UNDERGROUND STRUCTURES AS SHOWN ARE BASED ON THE BEST INFORMATION AVAILABLE BUT NO GUARANTEE IS GIVEN THAT ALL EXISTING UTILITIES ARE SHOWN OR THAT THE GIVEN LOCATIONS ARE EXACT. CONFIRMATION OF EXISTENCE AND EXACT LOCATION OF ALL SERVICES MUST BE OBTAINED FROM THE INDIVIDUAL UTILITIES BEFORE PROCEEDING WITH CONSTRUCTION.

B.M.	ELEV.	DESIGNED BY	CHECKED BY
		DB	KZ
		RS	KZ
		SCALE:	RELEASED FOR CONSTRUCTION
		HORIZONTAL 1: 750	DATE
		VERTICAL 1: 50	DATE
		DATE 2015 05 25	DATE
		NO. REVISIONS	DATE BY
		2 REVISED TRENCHLESS INSTALLATION FROM MH TO EXISTING MH	15/05/25 CN
		1 REVISED MISCELLANEOUS TEXT & OBJECTS	15/05/12 RS

ENGINEER'S SEAL
 ORIGINAL SIGNED BY K.R. ZUREK 15/05/12
 CONSULTANT DRAWING NUMBER

THE CITY OF WINNIPEG
 WATER AND WASTE DEPARTMENT
 ENGINEERING DIVISION
 2015 SEWER WORKS
 CONTRACT NO. 3
WARDE AVENUE INTERCEPTOR
 45 N OF S R BRIDGETOWN DRIVE TO
 223 E OF W R BRIDGETOWN DRIVE

SHEET 2 OF 5
 CITY DRAWING NUMBER 10968
 FILE PATH: R:\DRAWINGS\SEWER\2015 RENEWALS\WARDE INTERCEPTOR\
 FILE NAME: Warde_Interceptor_(INTERNAL)_R3.dwg