

1 SECTION
S2 1:10

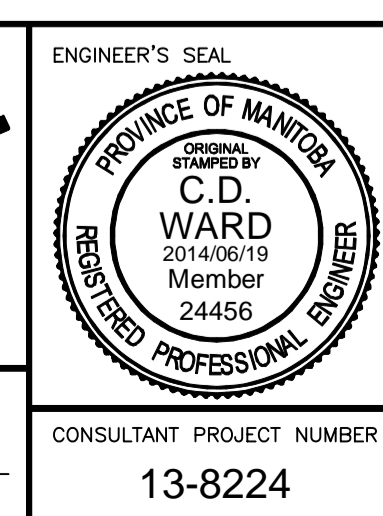
RETAINING WALL BACKFILL NOTES:
FOR STRUCTURAL BACKFILL WITHIN 1m OF RETAINING WALLS, COMPACT IN LIFTS NOT EXCEEDING 150 THICK USING LIGHT EQUIPMENT.

METRIC
WHOLE NUMBERS INDICATE MILLIMETRES
DECIMALIZED NUMBERS INDICATE METRES

G:\CAD\DWG\138224\09-Structural\01-Contract\Brady\138224-09-RETAINING WALLS 3.dwg



B.M. ELEV.	DESIGNED BY	CDW
	DRAWN BY	KB
	CHECKED BY	SSR
	APPROVED BY	ARR
	HOR. SCALE	AS NOTED
	VERTICAL	
1 ISSUED FOR TENDER	14/06/19	ARR
NO. REVISIONS	DATE	BY
		DATE
		MARCH 2014



<p>THE CITY OF WINNIPEG WATER AND WASTE DEPARTMENT</p>	
<p>4R WINNIPEG DEPOT BRADY ROAD RESOURCE MANAGEMENT FACILITY</p>	
<p>CITY DRAWING NUMBER 1-0400A-S0002-003</p>	<p>SHEET 11 OF 35</p>
<p>CONSULTANT PROJECT NUMBER 13-8224</p>	
<p>RETAINING WALL DETAILS 3 OF 3</p>	
<p>CONSULTANT DRAWING NUMBER S4</p>	