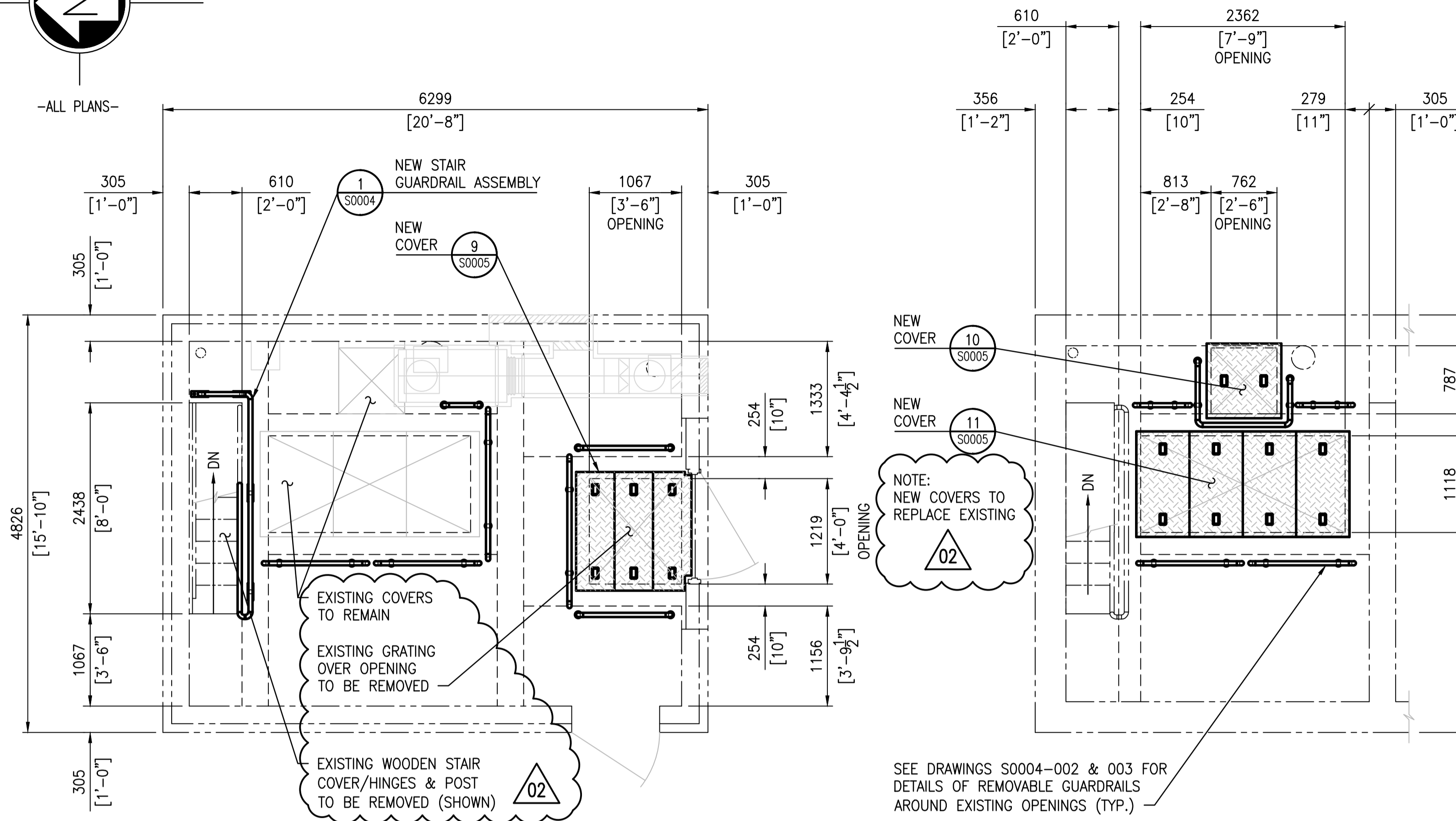


-ALL PLANS-

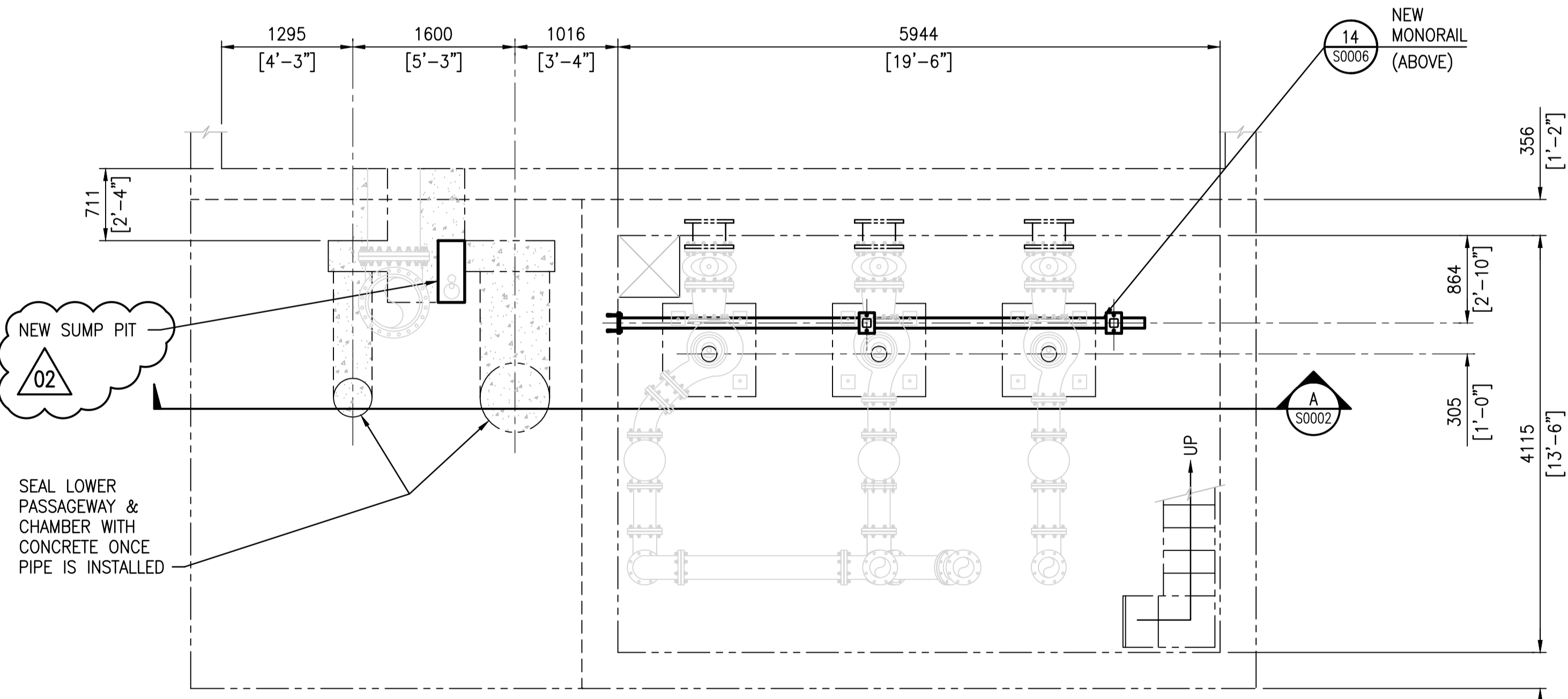
NOTES:

- SEE DRAWING 1-0169L-S0004 FOR GENERAL NOTES.
- SEE DRAWING 1-0169L-S0005 FOR STRUCTURAL NOTES.

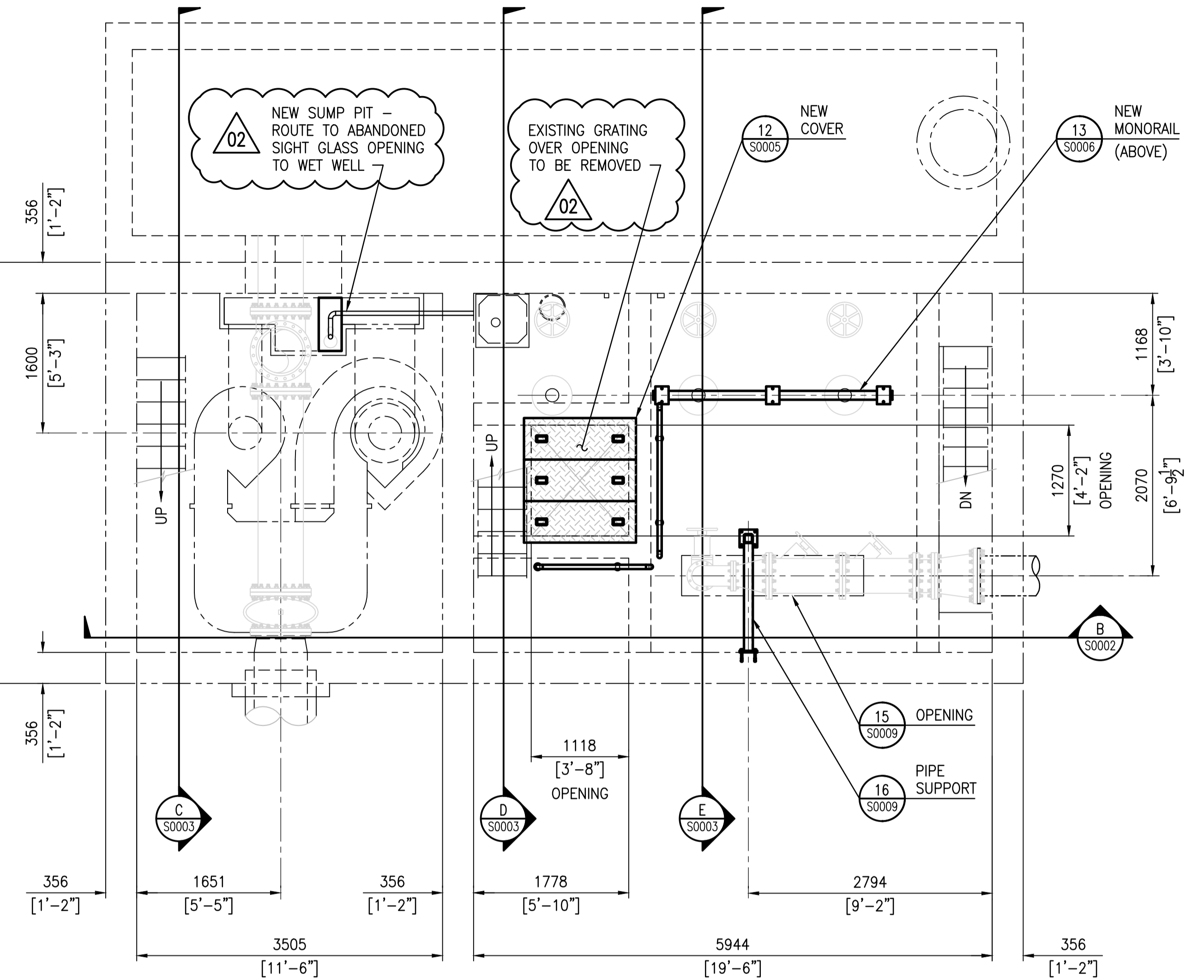


PLAN @ T.O.C. EL. 232.715 (763'-6")
SCALE: 1 : 40

PARTIAL PLAN @ T.O.C. EL. 230.175 (755'-2")
SCALE: 1 : 40

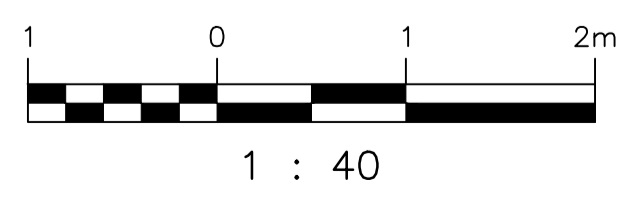


PLAN ABOVE EL. 224.269 (735'-9 1/2")
SCALE: 1 : 40



PLAN ABOVE EL. 227.635 (746'-10")
SCALE: 1 : 40

SECTION ARROWS SHOWN TYPICAL ALL PLAN VIEWS
DEPTH SHOWN ON PLANS VARIES - SEE ELEVATIONS



DRAWING NUMBER	REFERENCE DRAWINGS
403-B	AINSLIE COMM. & PUMPING STATION - SUPERSTRUCTURE & DETAILS
403-A	AINSLIE COMM. & PUMPING STATION - REINFORCING DETAILS
403	AINSLIE COMM. & PUMPING STATION

NO.	REVISIONS	DATE	DESIGN	CHECK
02	COVER / SUMP PIT NOTES ADDED	2015/10/08	K.K.	
01	ISSUED FOR ADDENDUM - G.RAILS / SUMP ADDED	2015/09/28	K.K.	
00	ISSUED FOR TENDER	2015/09/17	K.K.	

SNC-LAVALIN INC. 148 Nature Park Way Winnipeg, MB, Canada R3P 0X7 204-786-8080		ENGINEER'S SEAL PRELIMINARY NOT TO BE USED FOR CONSTRUCTION
DESIGNED BY: K. KOTYK DRAWN BY: B. DICKSON SCALE: 1:40 DATE: 2015/06/22 CONSULTANT NO.:	CHECKED BY: D. COATES APPROVED BY: I. PARKINSON ISSUED FOR CONSTRUCTION BY: DATE:	THE CITY OF WINNIPEG WATER AND WASTE DEPARTMENT OLIVE WASTEWATER LIFT STATION 2015 UPGRADES PLANS STRUCTURAL MODIFICATIONS
CITY DRAWING NUMBER 1-0169L-S0001		SHEET 001 REV. 02 SIZE A1