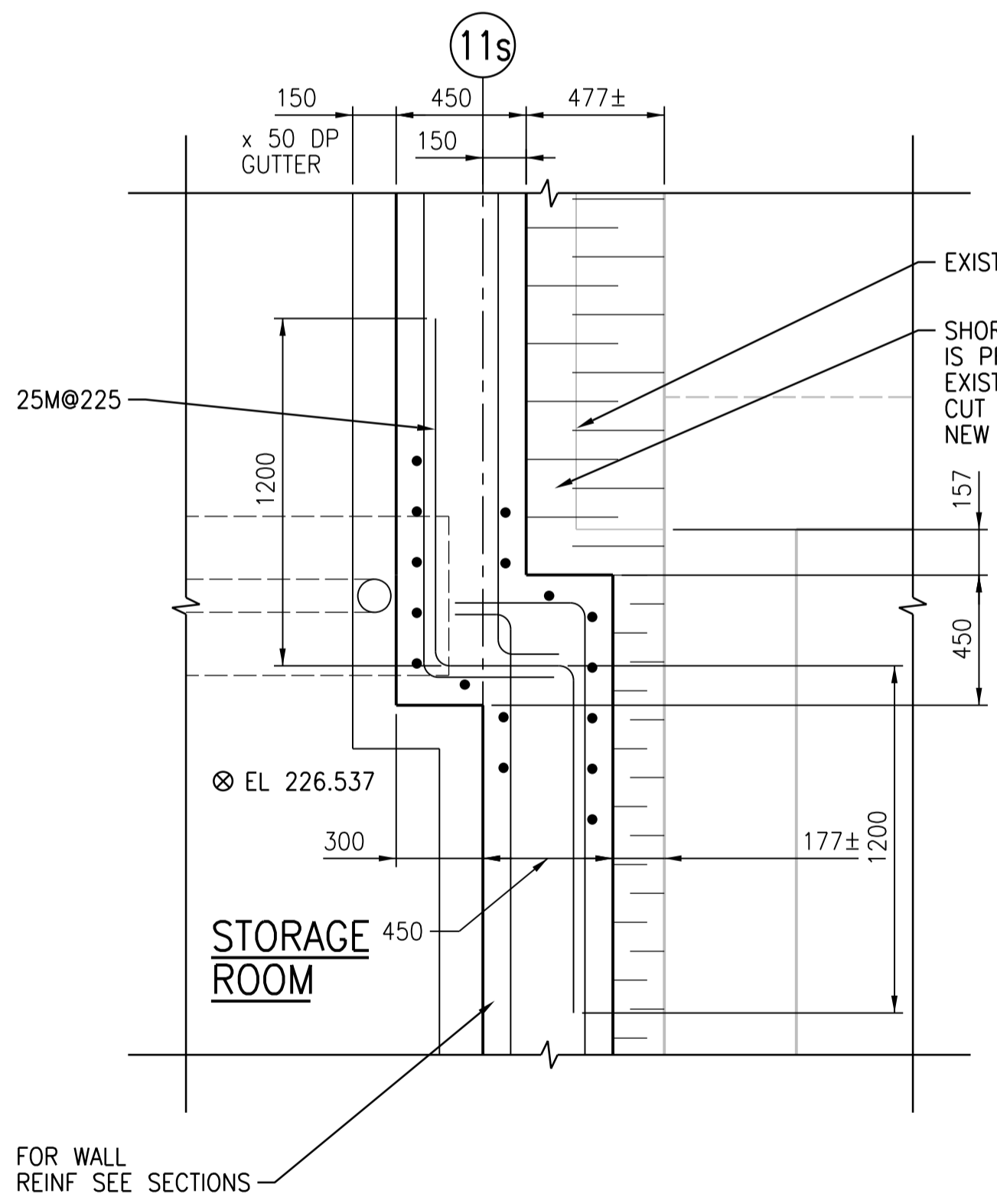


1 DETAIL
1:20
SGAD-S005

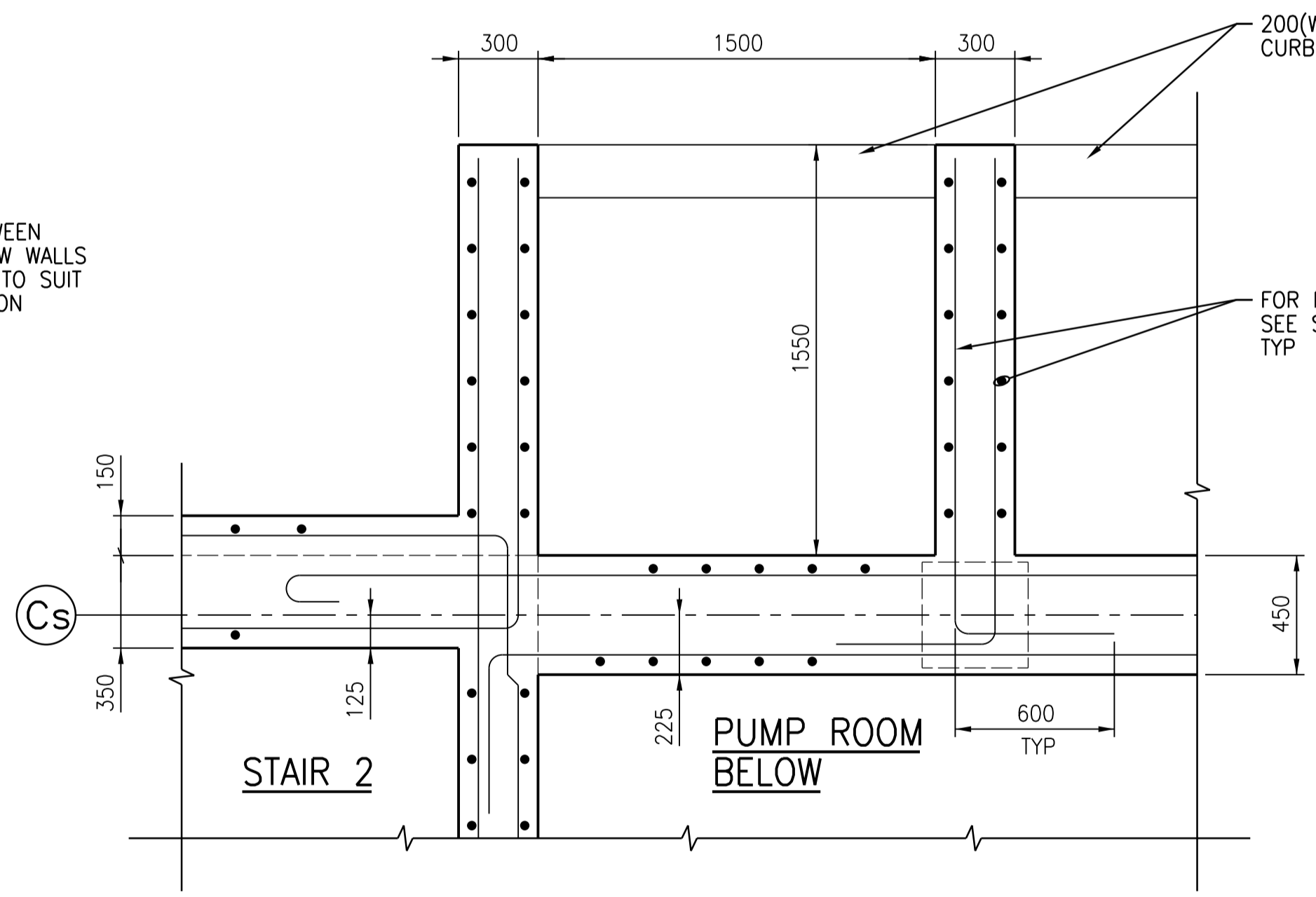
2 DETAIL
1:20
SGAD-S005

3 DETAIL
1:20
SGAD-S005

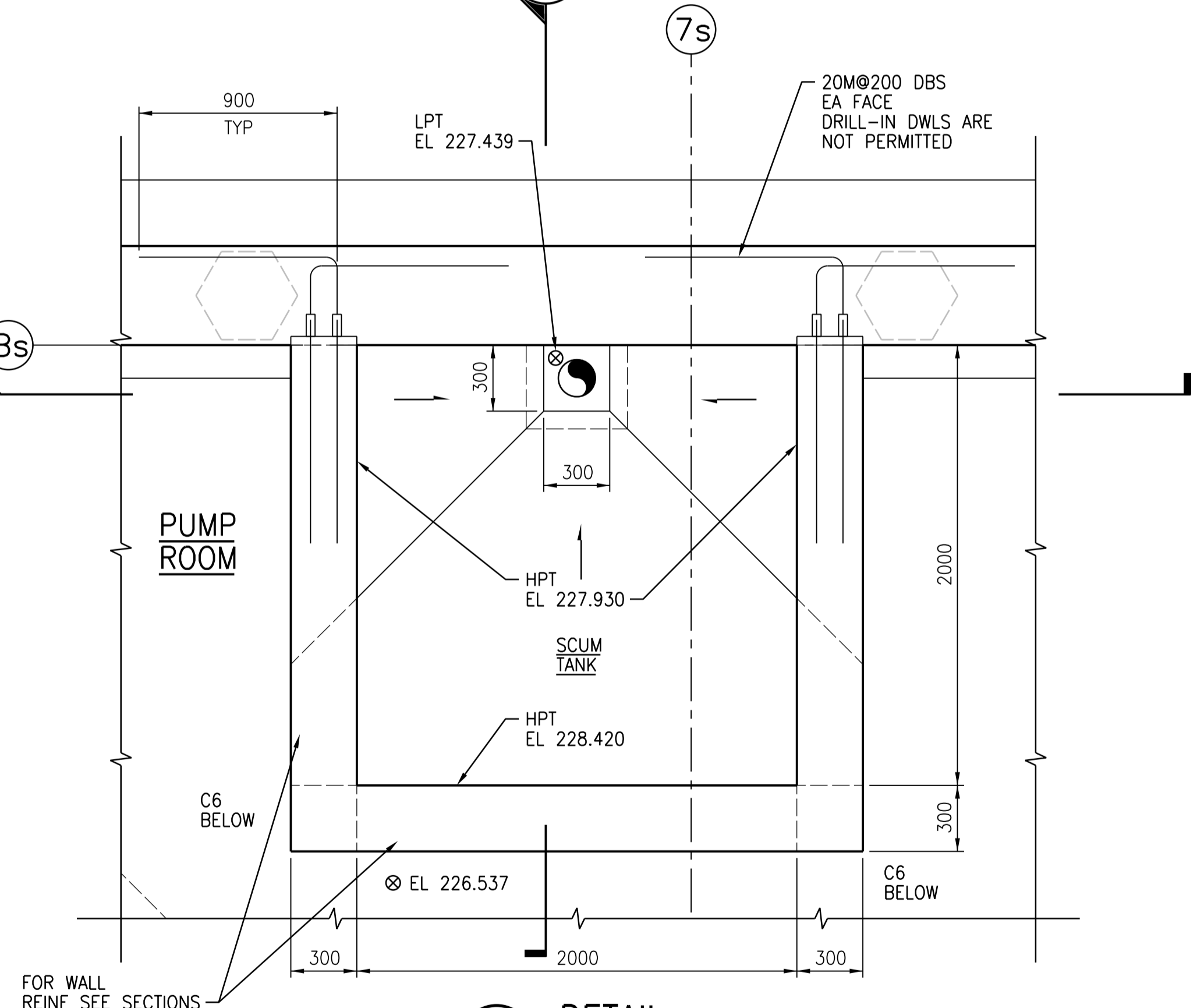
4 DETAIL
1:20
SGAD-S005



5 DETAIL
1:20
SGAD-S005



6 DETAIL
1:20
SGAD-S009



7 DETAIL
1:20
SGAD-S004



NO.	REVISIONS	DATE	DESIGN	CHECK
01	ISSUED FOR TENDER - B.O. 899-2015	02/2016	G.O.	J.C.
00	ISSUED FOR TENDER - B.O. 899-2015	01/2016	G.O.	J.C.

CH2MHILL

SNC-LAVALIN

DESIGNED BY: A THAKKAR

CHECKED BY: R. PARIKH

DRAWN BY: G. OMORI

APPROVED BY: H.T. FREIHAMMER

SCALE: 1:20

ISSUED FOR CONSTRUCTION BY: T. TURZAK

DATE: 2016/01/29

DATE: 2016/01/29

CONSULTANT NO.: 474248

ENGINEER'S SEAL

24/02/2016

PROVINCE OF MANITOBA

S.L.E. LUI

Member 37003

REGISTERED PROFESSIONAL ENGINEER

Edw

THE CITY OF WINNIPEG

Winnipeg

WATER AND WASTE DEPARTMENT

SOUTH END WATER POLLUTION CONTROL CENTRE

SEWPPC UPGRADING/EXPANSION PROJECT

STRUCTURAL

SECONDARY CLARIFIERS 4 AND 5

DETAILS

CITY DRAWING NUMBER: 1-0102-SDTL-S006

SHEET: 001

REV: 01

SIZE: A1