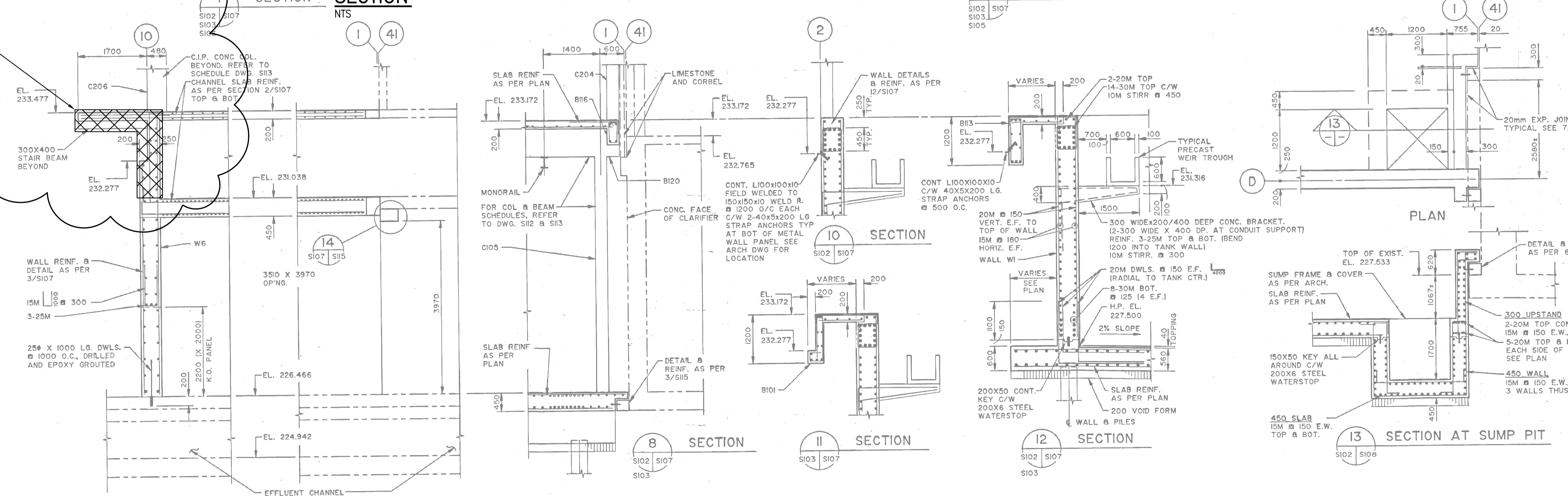


CUT AND REMOVE EXISTING CONCRETE SEE 0330-808 & 0330-817 TYPICAL FOR ALL DEMOLITION SHOWN ON THIS DRAWING



SECTION NTS

NOTES:
 1. FOR NEW CONSTRUCTION SEE DRAWING 1-0102-SGAD-S009, 1-0102-SGAD-S010, 1-0102-SGAD-S025 AND 1-0102-SGAD-S032.
 2. REFER TO GENERAL DEMOLITION NOTES DRAWING 4-0102-DGAD-A001.



NO.	REVISIONS	DATE	DESIGN	CHECK
01	ISSUED FOR ADD. 2 - B.O. 899-2015	02/2016	G.O. J.C.	
00	ISSUED FOR TENDER - B.O. 899-2015	01/2016	G.G. J.C.	

CH2MHILL		KCS GROUP	
DESIGNED BY: E. LUI	CHECKED BY: R. PARIKH	ENGINEER'S SEAL	
DRAWN BY: G. GERMAN	APPROVED BY: H.T. FREIHAMMER		
SCALE: NTS	ISSUED FOR CONSTRUCTION BY: T. TURZAK		
DATE: 2016/01/29		DATE: 2016/01/29	
CONSULTANT NO.: 474248			

SEALING ARCHITECT OR ENGINEER ACCEPTS RESPONSIBILITY ONLY FOR AREAS IDENTIFIED BY CLOUDING ON THIS DRAWING.
 NOTE: THIS DRAWING SUPERSEDES DRAWING SEP-413

THE CITY OF WINNIPEG
 WATER AND WASTE DEPARTMENT

SOUTH END WATER POLLUTION CONTROL CENTRE
 SEWPCC UPGRADING/EXPANSION PROJECT
 STRUCTURAL
 SECONDARY CLARIFIERS - CONCRETE AND CMU REMOVALS
 TIE-INS (2)

CITY DRAWING NUMBER: 1-0102-SGAD-S054
 SHEET: 001
 REV: 01
 SIZE: A1

