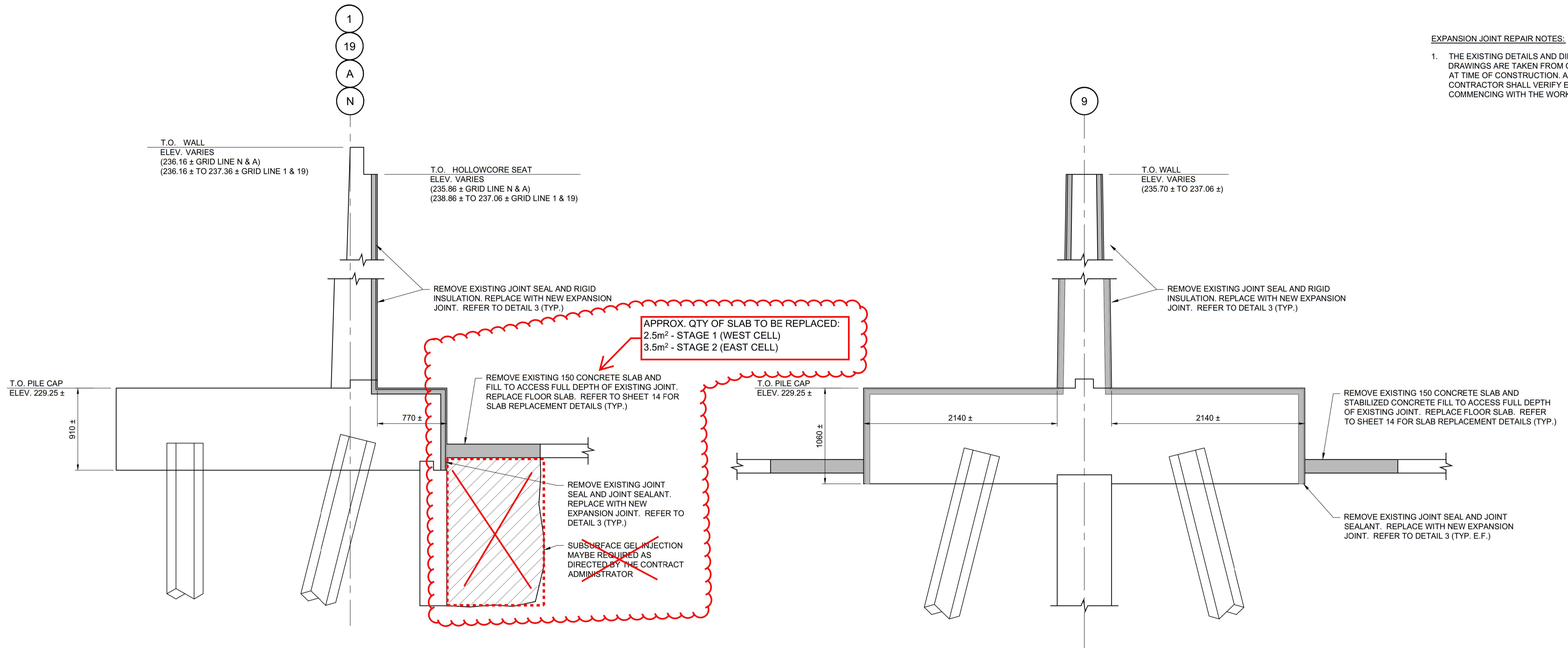


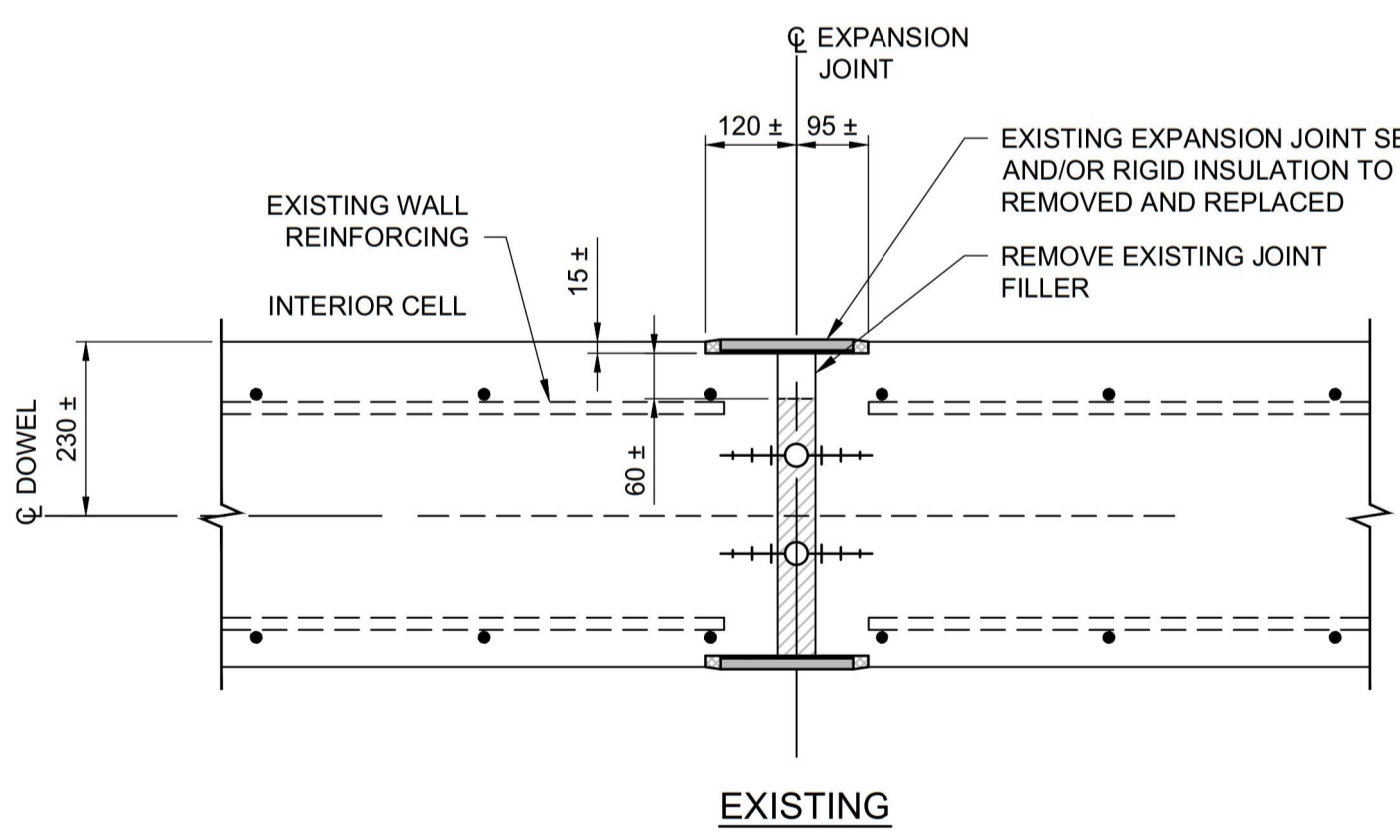
**EXPANSION JOINT REPAIR NOTES:**

- THE EXISTING DETAILS AND DIMENSIONS SHOWN ON ALL DRAWINGS ARE TAKEN FROM ORIGINAL CONTRACT DOCUMENTS AT TIME OF CONSTRUCTION. ACTUAL CONDITIONS MAY VARY. CONTRACTOR SHALL VERIFY EXISTING CONDITIONS BEFORE COMMENCING WITH THE WORK.

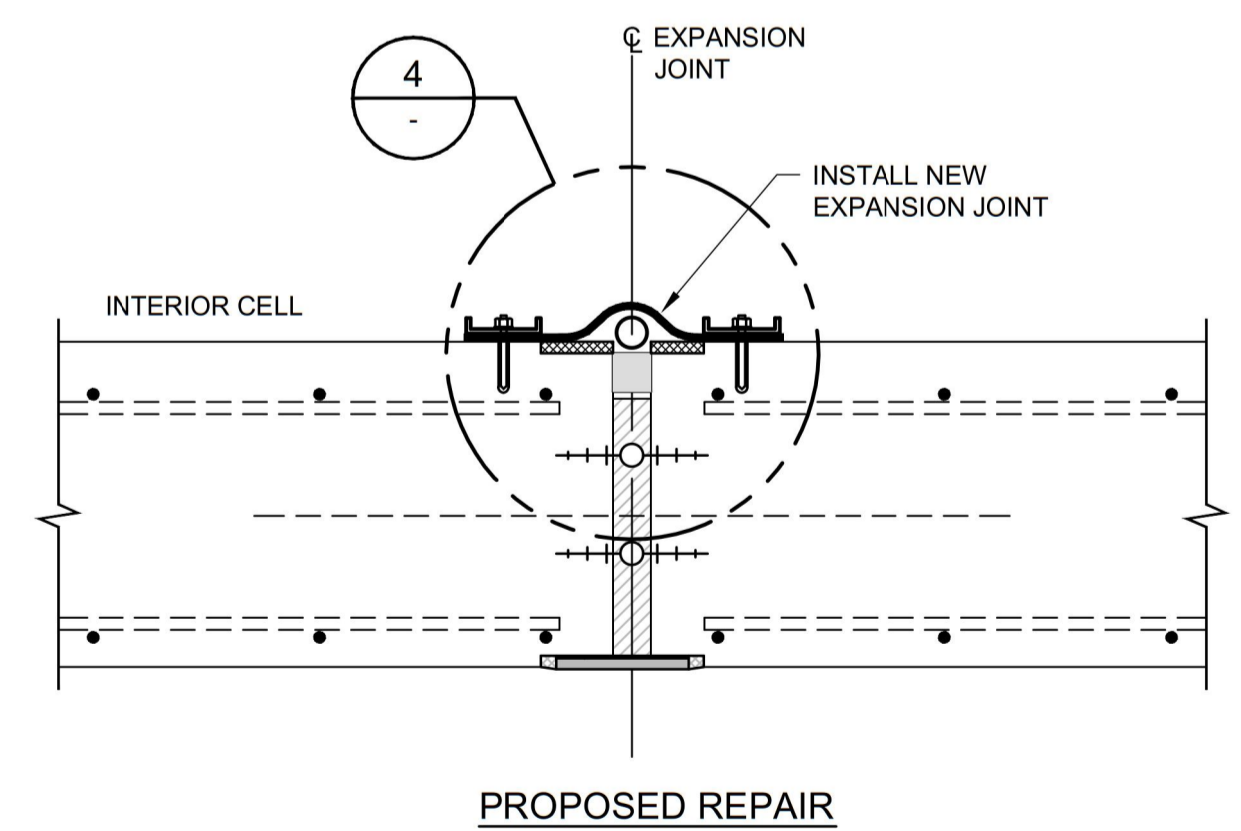


**1 SECTION**  
TYPICAL EXTERIOR WALL (8 THUS)

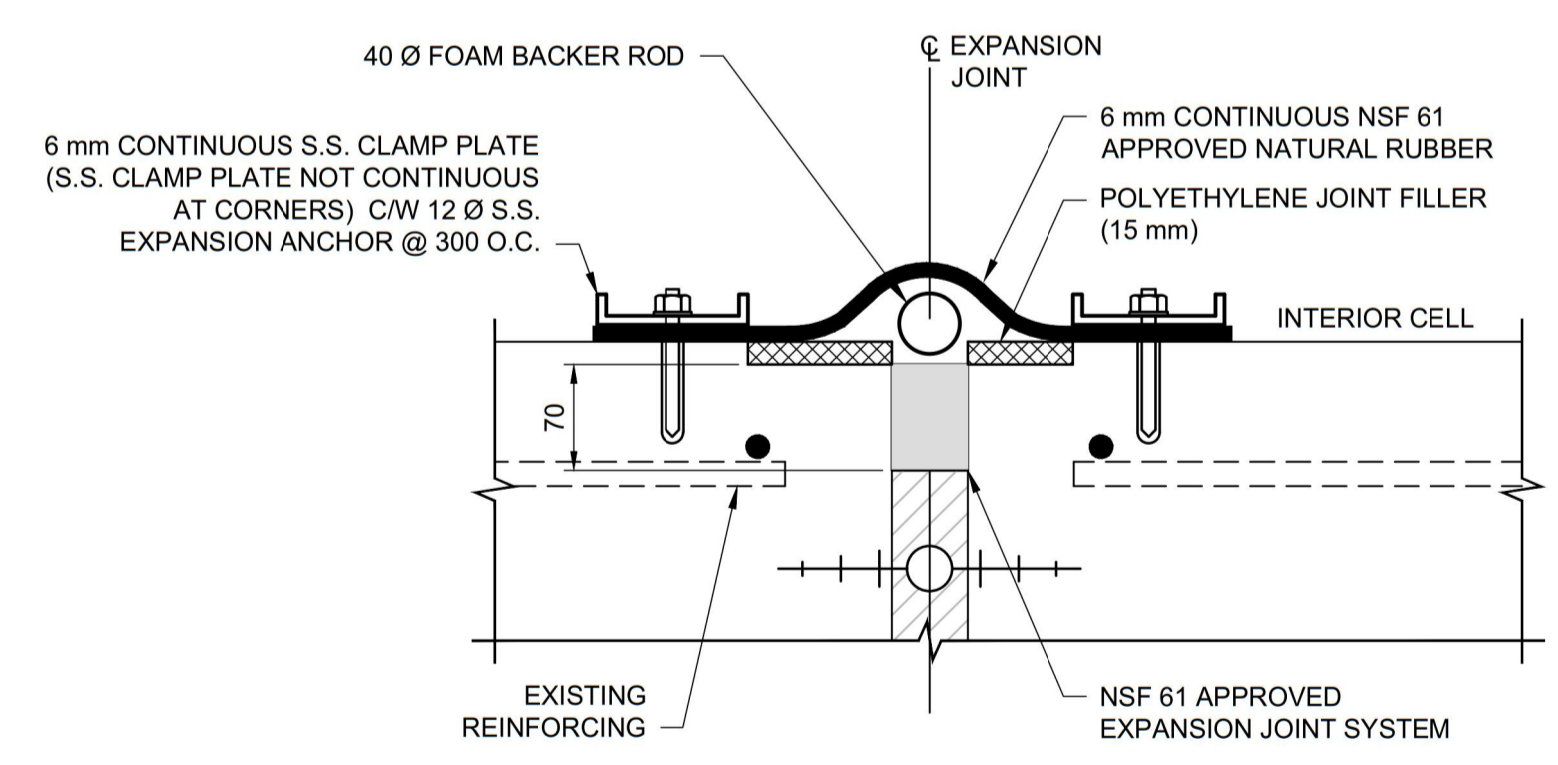
**2 SECTION**  
TYPICAL INTERIOR WALL



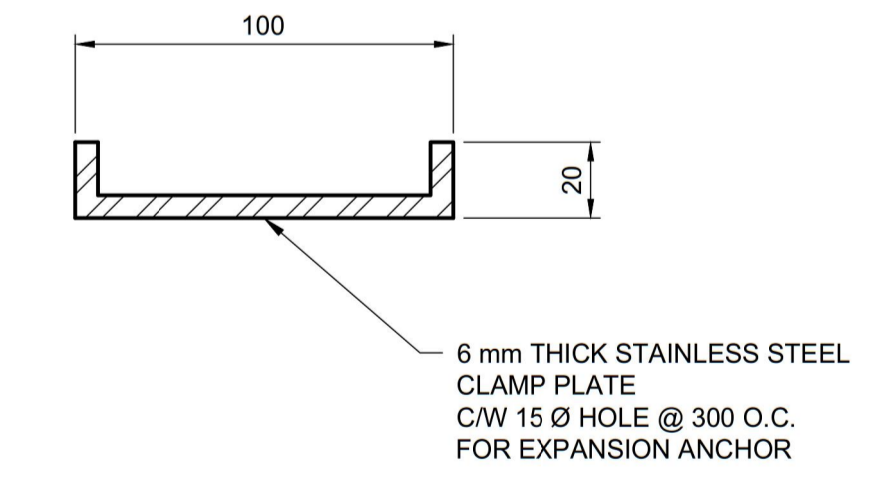
**3 DETAIL**  
INTERIOR WALL AND FOOTING EXPANSION JOINT REPAIR



**PROPOSED REPAIR**



**4 DETAIL**  
TYPICAL EXPANSION JOINT REPLACEMENT



**5 DETAIL**  
STAINLESS STEEL CLAMP PLATE

**METRIC**  
WHOLE NUMBERS INDICATE MILLIMETRES  
DECIMALIZED NUMBERS INDICATE METRES

**APEGM**  
Certificate of Authorization  
Dillon Consulting Limited (MB)  
No. 1789 Date: 2015-11-20

LOCATION APPROVED UNDERGROUND STRUCTURES  
N/A  
SUPV. U/G STRUCTURES COMMITTEE DATE  
NOTE:  
LOCATION OF UNDERGROUND STRUCTURES AS SHOWN ARE BASED ON THE BEST INFORMATION AVAILABLE BUT NO GUARANTEE IS GIVEN THAT ALL EXISTING UTILITIES ARE SHOWN OR THAT THE GIVEN LOCATIONS ARE EXACT. CONFIRMATION OF EXISTENCE AND EXACT LOCATION OF ALL SERVICES MUST BE OBTAINED FROM THE INDIVIDUAL UTILITIES BEFORE PROCEEDING WITH CONSTRUCTION.

NO.	REVISIONS	DATE	BY
2	ISSUED FOR ADDENDUM No.2	2015 12 10	SSR
1	ISSUED FOR TENDER	2015 11 20	SSR

CHECKED BY	DRA
APPROVED BY	SSR
DESIGNED BY	FAK
DRAWN BY	TLK
SCALE:	AS NOTED
HORIZONTAL	
VERTICAL	
DATE	2015 11 20

**DILLON CONSULTING**

ENGINEER'S SEAL  
RELEASED FOR CONSTRUCTION

**THE CITY OF WINNIPEG**  
WATER AND WASTE DEPARTMENT  
ENGINEERING DIVISION  
WILKES RESERVOIR NORTH CELL REHABILITATION  
FOOTING AND WALL JOINT REPLACEMENT  
SECTIONS AND DETAILS

CONSULTANT DRAWING NUMBER: 14-1411-S-107  
SHEET 15 OF 47  
CITY DRAWING NUMBER: 1-0650R-S0007-001