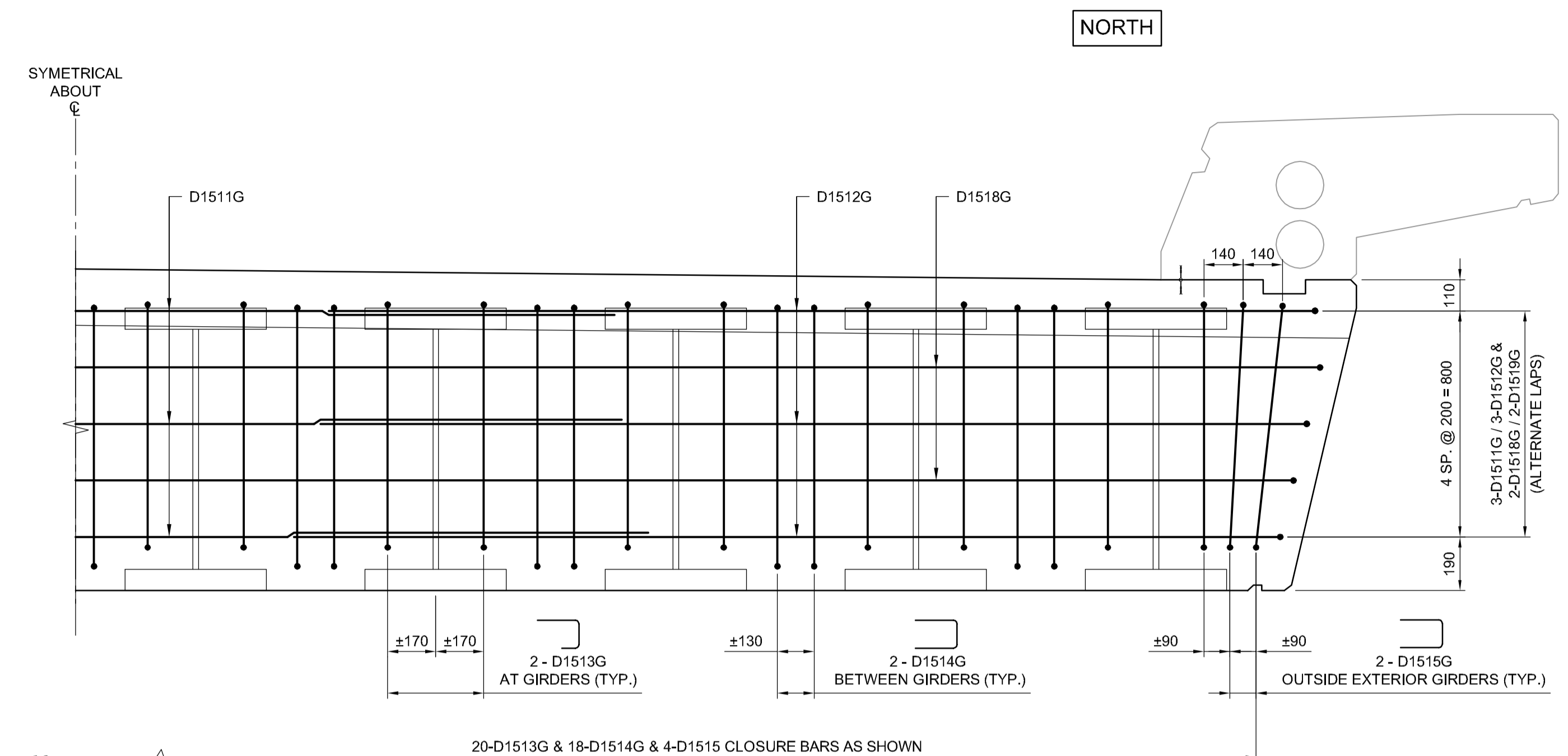
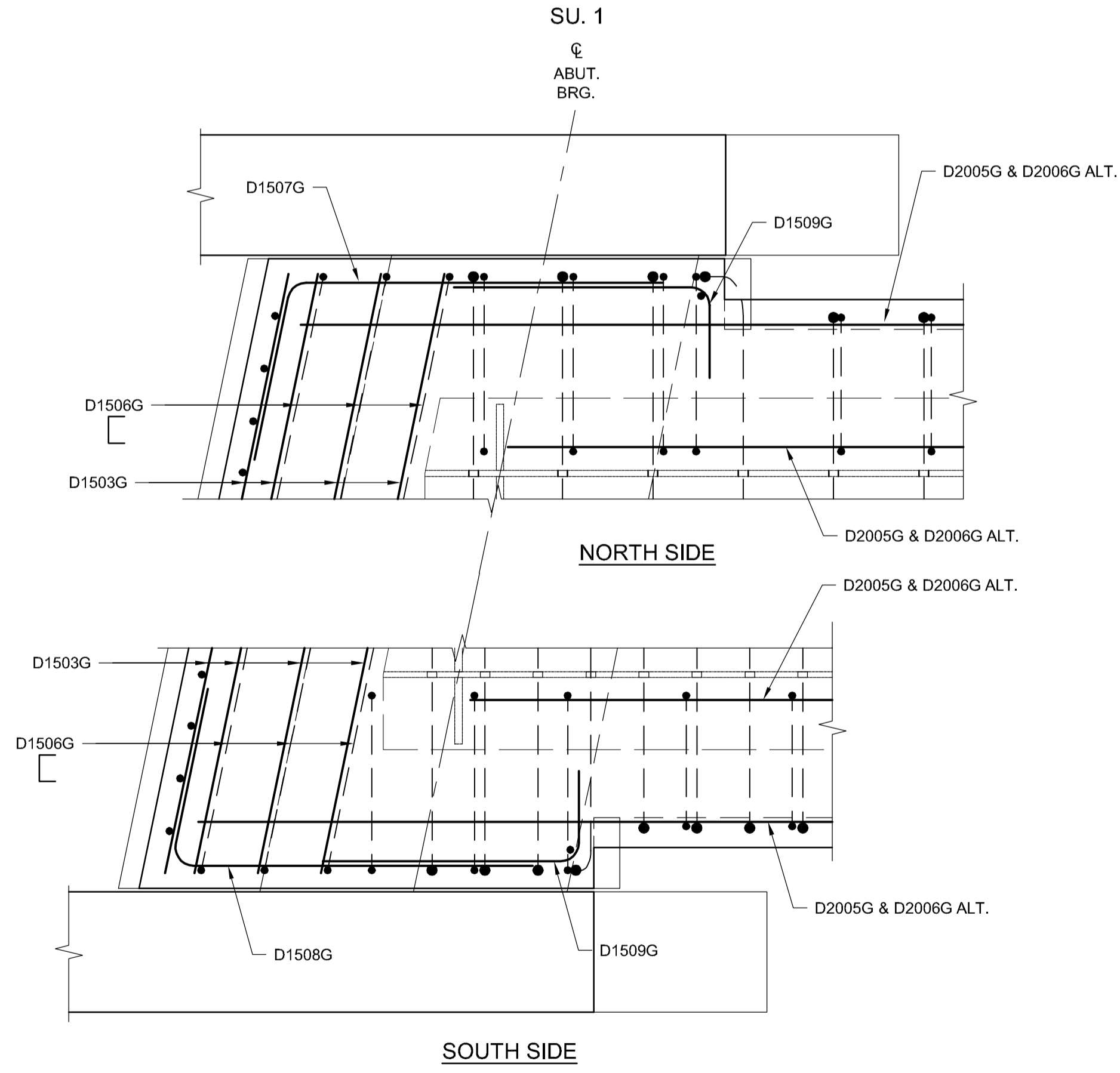


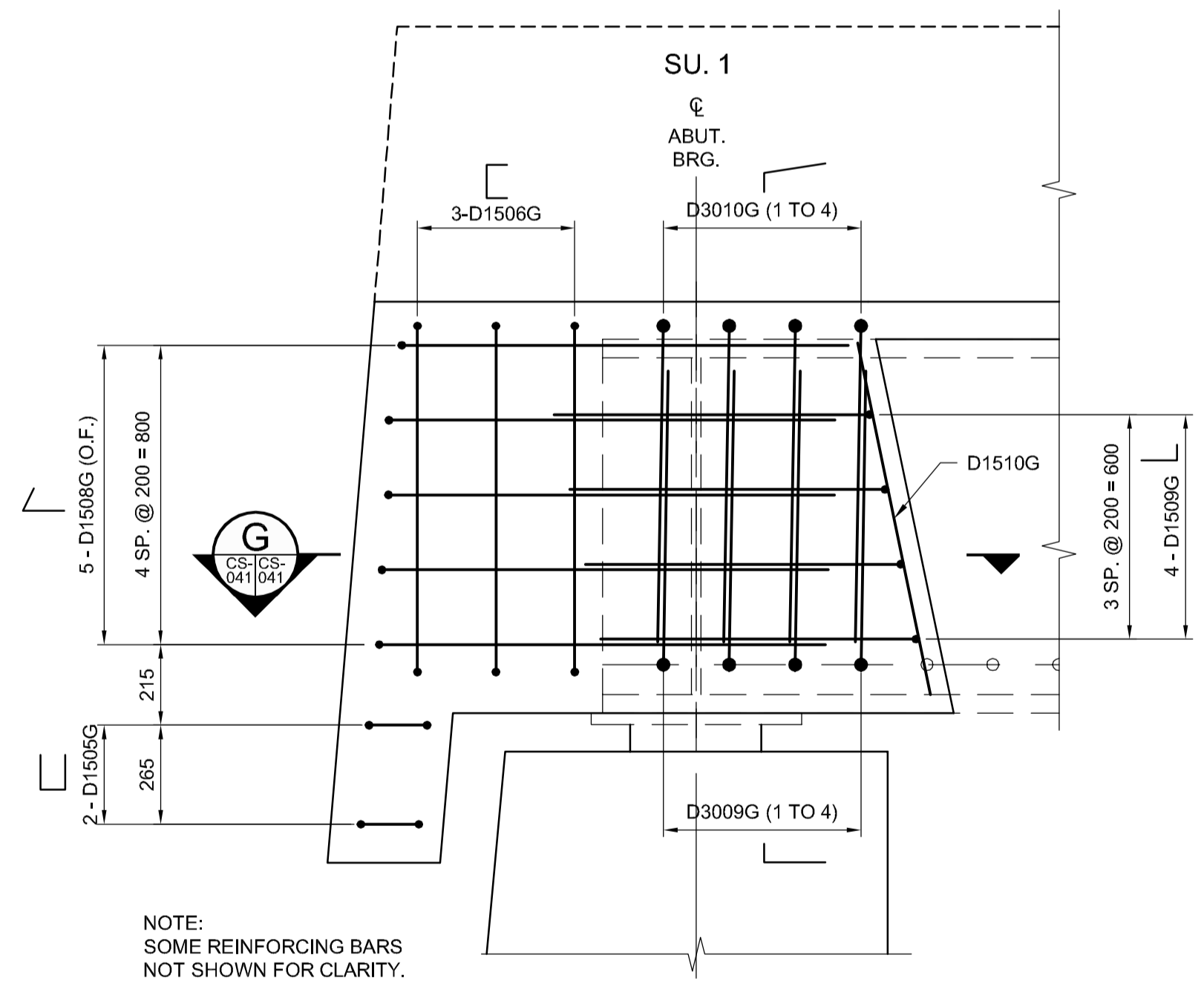
E SECTION
SCALE: 1:15
TYPICAL AT ABUTMENTS



F SECTION
SCALE: 1:15
TYPICAL AT PIERS



G SECTION
SCALE: 1:15
SU.1 SHOWN, SU.4 SIMILAR



G ELEVATION
SCALE: 1:15
DECK END DIAPHRAGM - SOUTH ELEVATION
TYPICAL AT ABUTMENTS

NOTE: SOME REINFORCING BARS NOT SHOWN FOR CLARITY.

ALL REINFORCING CHANGED TO GALVANIZED REINFORCING STEEL

- NOTES:**
- FOR REINFORCING STEEL NOTES REFER TO SHEET C2-CS-001.
 - REINFORCING STEEL WITH MARKS ENDING WITH "G" SHALL BE GALVANIZED REINFORCING.
 - FOR CONCRETE CLEAR COVER TO REINFORCEMENT REFER TO SHEET C2-CS-001.

G:\CAD\163353\Technical\Workspac\Engineering\Drawings and Figures\Structures\Contract\163353-C2-CON-CS-DECK SLAB REINFORCING 5.dwg



DESIGNED BY	RE	CHECKED BY	SSR
DRAWN BY	CGC	APPROVED BY	DBW
HOR. SCALE	AS SHOWN	RELEASED FOR CONSTRUCTION	
VERTICAL SCALE	AS SHOWN		
NO.	REVISIONS	DATE	BY
1	ADDENDUM #1	17/01/25	RE
0	ISSUED FOR TENDER	17/01/09	RE

ENGINEER'S SEAL
PROVINCE OF MANITOBA
R.B. ERIC
Member 22665
REGISTERED PROFESSIONAL ENGINEER
CONSULTANT PROJECT NUMBER
16-3353

THE CITY OF WINNIPEG
PUBLIC WORKS DEPARTMENT
Waverley Street Underpass at CN Mile 3.89 Rivers Sub
Contract 2: Underpass Structure, Railworks,
Roadworks, Land Drainage Sewer, Pumping Station
and Landscaping Works
CITY DRAWING NUMBER
U-239-2016-C2-CS-041
SHEET **041** OF **085**
CONSULTANT DRAWING NUMBER
C2-CS-041