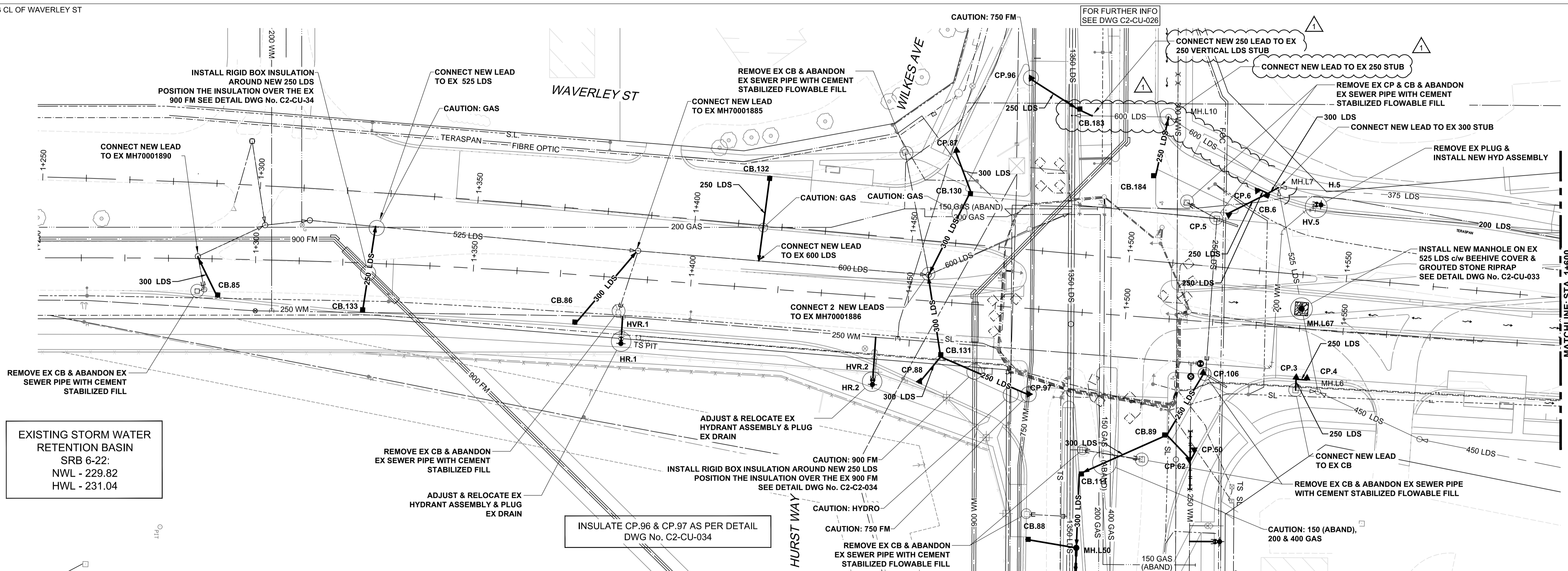


CHAINAGE ALONG CL OF WAVERLEY ST



EXISTING STORM WATER RETENTION BASIN  
SRB 6-22:  
NWL - 229.82  
HWL - 231.04

NOTE: REFER TO LDS STRUCTURE & LOCATION SCHEDULE ON DRAWING C2-CU-038 FOR FURTHER CATCHBASIN, CATCHPIT, DITCH INLET & MANHOLE INFORMATION

**WARNING**

- IF POWER EQUIPMENT OR EXPLOSIVES ARE TO BE USED FOR EXCAVATION ON THIS PROJECT THE CONTRACTOR MUST:
1. NOTIFY THE GAS COMPANY OF THE PROPOSED LOCATION OF EXCAVATION.
  2. TAKE PRECAUTION TO AVOID DAMAGE TO GAS COMPANY INSTALLATIONS SEE PROVINCIAL REGULATION 210/72 FOR DETAILS.
  3. OBTAIN EXCAVATION PERMITS PRIOR TO CONSTRUCTION.

WATER MAIN		PIPE ABANDONMENTS		WATER MAIN	
150 WM	HYDRANT	150 WM	SURVEY BAR	150 WM	HYDRANT
150 WM	VALVE	150 WM	CURB STOP	150 WM	VALVE
300 LDS	LAND DRAINAGE SEWER	300 LDS	REDUCER	300 LDS	LAND DRAINAGE SEWER
250 WWS	WASTE WATER SEWER	250 WWS	COUPLING	250 WWS	WASTE WATER SEWER
	SEWER SERVICE PIPE		ANODE		PAVEMENT CROWN
	DRAINAGE CONNECTION PIPE		HYDRO		N/W PROPERTY LINE
	MANHOLE		MTS		S/E PROPERTY LINE
	CATCH BASIN		GAS		N/W GUTTER
	CURB INLET		TESTHOLE		S/E GUTTER
	CULVERT		LAMP STANDARD		
EXISTING	LEGEND - PLAN	NEW	LEGEND - PLAN	NEW	LEGEND - PROFILE

UNDERGROUND STRUCTURES	
SUPV. U/G STRUCTURES	DATE
LOCATION OF UNDERGROUND STRUCTURES AS SHOWN ARE BASED ON THE BEST INFORMATION AVAILABLE BUT NO GUARANTEE IS GIVEN THAT ALL EXISTING UTILITIES ARE SHOWN OR THAT THE GIVEN LOCATIONS ARE EXACT. CONFIRMATION OF EXISTENCE AND EXACT LOCATION OF ALL SERVICES MUST BE OBTAINED FROM THE INDIVIDUAL UTILITIES BEFORE PROCEEDING WITH CONSTRUCTION.	

B.M. ELEV.	NO.	REVISIONS	DATE	BY
	1	ISSUED FOR ADDENDUM 2	17/02/03	Wjd
	0	ISSUED FOR TENDER	17/01/09	Wjd

**AECOM**

DESIGNED BY	MPG	CHECKED BY	
DRAWN BY	KLC	APPROVED BY	
HOR. SCALE	1:500	RELEASED FOR CONSTRUCTION	
VERTICAL	1:100	DATE	

ENGINEER'S SEAL  
M.P.A. GAUDREAU  
Member 32167  
REGISTERED PROFESSIONAL ENGINEER

**THE CITY OF WINNIPEG**  
PUBLIC WORKS DEPARTMENT

WAVERLEY STREET UNDERPASS AT CN MILE 3.89 RIVERS SUB  
CONTRACT 2: UNDERPASS STRUCTURE, RAILWORKS,  
ROADWORKS, LAND DRAINAGE SEWER, PUMPING STATION  
AND LANDSCAPING WORKS

WAVERLEY STREET - PLAN/PROFILE  
LDS  
STATION 1+250 to STATION 1+600

CITY DRAWING NUMBER  
U239-2016-C2-CU-022

SHEET 22 OF 41

CONSULTANT DRAWING NUMBER  
C2-CU-022

PA:60321148;900-Work\9100-DD CAD\200-SHEETS\Municipal\63353-C2-CU-Waverley-002.dwg

**AECOM**  
Certificate of Authorization  
AECOM Canada Ltd.  
No. 4671 Date: \_\_\_\_\_  
BID OPPORTUNITY NO. 473-2016