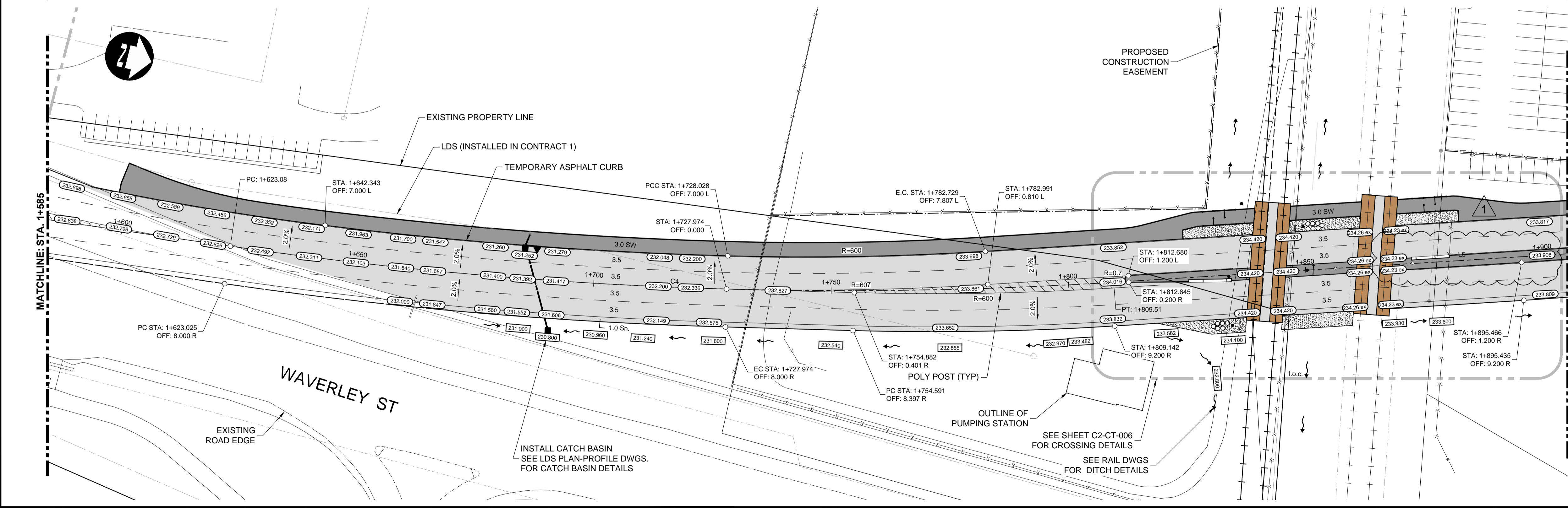


GENERAL DETOUR CONSTRUCTION NOTES:
 1. SEE CONSTRUCTION STAGING SHEETS FOR DETOUR SECTIONS (GE-025 TO GE-052)



METRIC
 WHOLE NUMBERS INDICATE MILLIMETRES
 DECIMALIZED NUMBERS INDICATE METRES

WARNING

- IF POWER EQUIPMENT OR EXPLOSIVES ARE TO BE USED FOR EXCAVATION ON THIS PROJECT THE CONTRACTOR MUST:
1. NOTIFY THE GAS COMPANY OF THE PROPOSED LOCATION OF EXCAVATION.
 2. TAKE PRECAUTION TO AVOID DAMAGE TO GAS COMPANY INSTALLATIONS SEE PROVINCIAL REGULATION 210/72 FOR DETAILS.
 3. OBTAIN EXCAVATION PERMITS PRIOR TO CONSTRUCTION.



150 WM	WATERMAIN	150 WM	CONCRETE	150 WM	WATERMAIN	150 WM	WATERMAIN
300 LDS	HYDRANT	300 LDS	ASPHALT	300 LDS	LAND DRAINAGE SEWER	300 LDS	LAND DRAINAGE SEWER
250 WWS	VALVE	250 WWS	PLANING	250 WWS	WASTE WATER SEWER	250 WWS	WASTE WATER SEWER
100 GAS	MANHOLE	100 GAS	SIDEWALK	100 GAS	HYDRANT	100 GAS	HYDRANT
300 LDS	CATCH BASIN	300 LDS	PAVING STONES	300 LDS	VALVE	300 LDS	VALVE
250 WWS	CURB INLET	250 WWS	PARTIAL DEPTH REPAIR	250 WWS	Q PROFILE	250 WWS	Q PROFILE
100 GAS	LAND DRAINAGE SEWER	100 GAS	PROPERTY LINE	100 GAS	NORTH/WEST GUTTER	100 GAS	NORTH/WEST GUTTER
250 WWS	WASTE WATER SEWER	250 WWS	DRAINAGE ARROW	250 WWS	SOUTH/EAST GUTTER	250 WWS	SOUTH/EAST GUTTER
100 GAS	HYDRO	100 GAS	CURB RAMP (SD-229C)	100 GAS	NORTH/WEST DITCH	100 GAS	NORTH/WEST DITCH
100 GAS	M.T.S.	100 GAS	DETECTABLE WARNING SURFACE TILE (SD-229AA)	100 GAS	SOUTH/EAST DITCH	100 GAS	SOUTH/EAST DITCH
EXISTING	LEGEND-PLAN	PROPOSED	EXISTING	LEGEND-PLAN	PROPOSED	EXISTING	LEGEND-PROFILE
EXISTING	LEGEND-PLAN	PROPOSED	EXISTING	LEGEND-PROFILE	PROPOSED	EXISTING	LEGEND-PROFILE

UNDERGROUND STRUCTURES

SUPPLY	U/G STRUCTURES	DATE

LOCATION OF UNDERGROUND STRUCTURES AS SHOWN ARE BASED ON THE BEST INFORMATION AVAILABLE BUT NO GUARANTEE IS GIVEN THAT ALL EXISTING UTILITIES ARE SHOWN OR THAT THE GIVEN LOCATIONS ARE EXACT. CONFIRMATION OF EXISTENCE AND EXACT LOCATION OF ALL SERVICES MUST BE OBTAINED FROM THE INDIVIDUAL UTILITIES BEFORE PROCEEDING WITH CONSTRUCTION.

B.M. ELEV.

SEE SHEET C2-CT-007 FOR CONTROL POINT INFORMATION

DILLON CONSULTING

DESIGNED BY	RTP	CHECKED BY	DBW
DRAWN BY	TJH	APPROVED BY	DBW
HOR. SCALE	1:500	RELEASED FOR CONSTRUCTION	
VERTICAL	1:20		

ENGINEER'S SEAL

PROVINCE OF MANITOBA
D.B. WIEBE
 Member
 22480
 REGISTERED PROFESSIONAL ENGINEER

CONSULTANT PROJECT NUMBER
16-3353

THE CITY OF WINNIPEG
 PUBLIC WORKS DEPARTMENT

Winnipeg

WAVERLEY STREET UNDERPASS AT CN MILE 3.89 RIVERS SUB CONTRACT 2: UNDERPASS STRUCTURES, RAILWORKS, ROADWORKS, LAND DRAINAGE SEWER, PUMPING STATION AND LANDSCAPING WORKS

CITY DRAWING NUMBER
 U-239-2016-C2-CT-002

SHEET OF
 002 OF 081

CONSULTANT DRAWING NUMBER
C2-CT-002

DETOUR PLAN-PROFILE - STA. 1+585 TO 1+905

G:\CAD\163353\Technical\Workspaces\Engineering\Drawings and Figures\Roadworks\Contract\163353-C2-CON-CT-PLAN-PROFILE-DETOUR.dwg