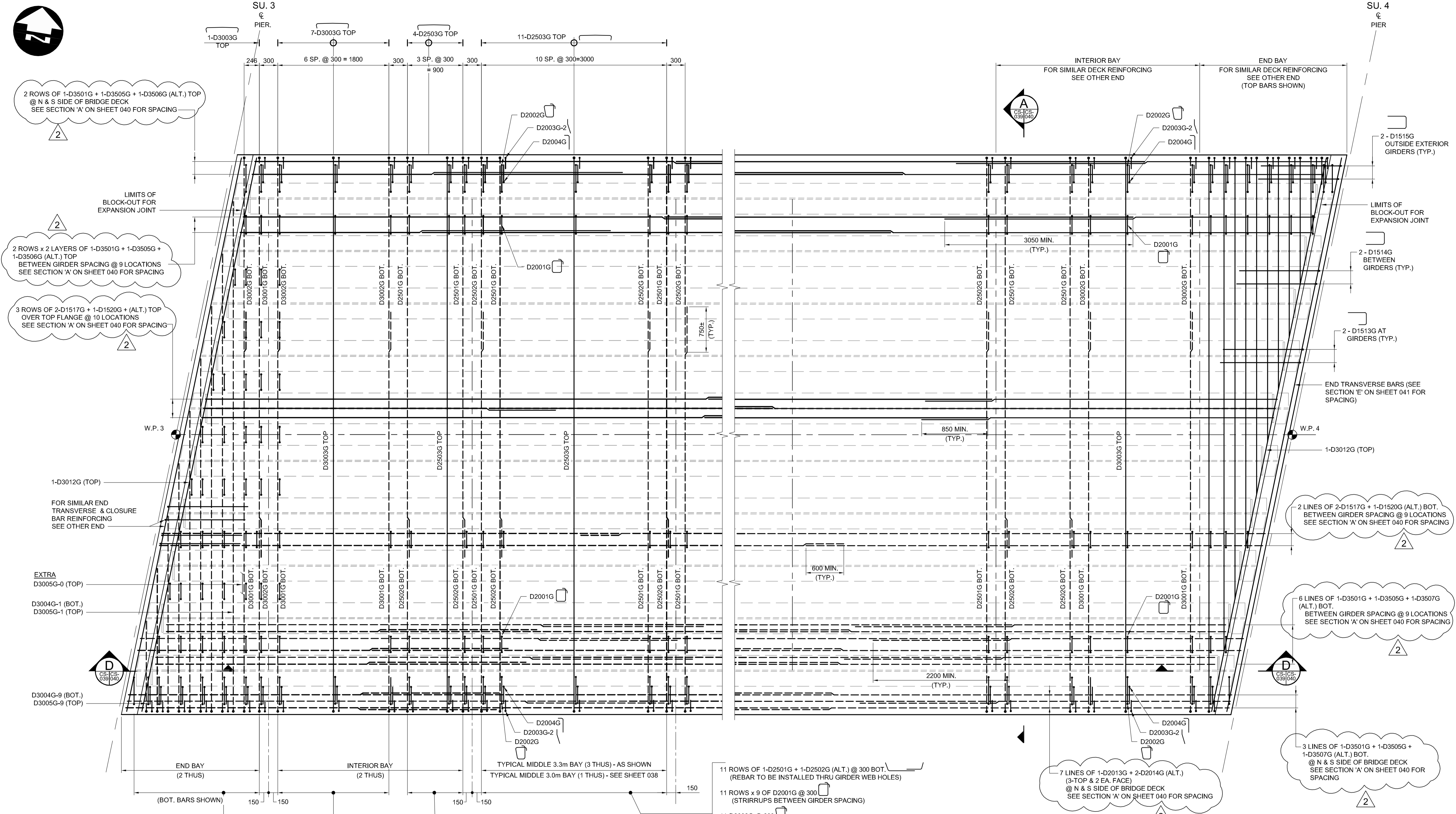


G:\CAD\163353\Technical\Workspaces\Engineering\Drawings and Figures\Structures\Contract\163353-C2-CON-CS-DECK SLAB REINFORCING 3.dwg



2 ROWS OF 1-D3501G + 1-D3505G + 1-D3506G (ALT.) TOP @ N & S SIDE OF BRIDGE DECK SEE SECTION 'A' ON SHEET 040 FOR SPACING

2 ROWS x 2 LAYERS OF 1-D3501G + 1-D3505G + 1-D3506G (ALT.) TOP BETWEEN GIRDER SPACING @ 9 LOCATIONS SEE SECTION 'A' ON SHEET 040 FOR SPACING

3 ROWS OF 2-D1517G + 1-D1520G + (ALT.) TOP OVER TOP FLANGE @ 10 LOCATIONS SEE SECTION 'A' ON SHEET 040 FOR SPACING

2 LINES OF 2-D1517G + 1-D1520G (ALT.) BOT. BETWEEN GIRDER SPACING @ 9 LOCATIONS SEE SECTION 'A' ON SHEET 040 FOR SPACING

6 LINES OF 1-D3501G + 1-D3505G + 1-D3507G (ALT.) BOT. BETWEEN GIRDER SPACING @ 9 LOCATIONS SEE SECTION 'A' ON SHEET 040 FOR SPACING

3 LINES OF 1-D3501G + 1-D3505G + 1-D3507G (ALT.) BOT. @ N & S SIDE OF BRIDGE DECK SEE SECTION 'A' ON SHEET 040 FOR SPACING

2 ROWS OF 1-D3001G + 1-D3002G (ALT.) (REBAR TO BE INSTALLED THRU GIRDER WEB HOLES)

1 EA. OF D3004G (1 TO 9) BOT. (REBAR TO BE INSTALLED THRU GIRDER WEB HOLES)

1 EA. OF D3005G (1 TO 9) TOP (SPACING TO MATCH BOT. REBARS)

38-D2001G = TOTAL NO. OF STIRRUPS (STIRRUPS REQ'D. BETWEEN EACH GIRDER SPACING TO BE CONFIRMED TO SUIT DURING REBAR INSTALLATION)

7 ROWS OF 1-D3001G + 1-D3002G (ALT.) @ 300 BOT. (REBAR TO BE INSTALLED THRU GIRDER WEB HOLES)

7 ROWS x 9 OF D2001G @ 300 (STIRRUPS BETWEEN GIRDER SPACING)

7-D2002G @ 300 (STIRRUPS @ N & S SIDE OF BRIDGE DECK)

7 - D2003G-2 + 7-D2004G IN PAIRS @ 300 (DOWELS FOR WALKWAY SLAB @ N & S SIDE OF BRIDGE DECK)

4 ROWS OF 1-D2501G + 1-D2502G (ALT.) @ 300 BOT. (REBAR TO BE INSTALLED THRU GIRDER WEB HOLES)

4 ROWS x 9 OF D2001G @ 300 (STIRRUPS BETWEEN GIRDER SPACING)

4-D2002G @ 300 (STIRRUPS @ N & S SIDE OF BRIDGE DECK)

4 - D2003G-2 + 4-D2004G IN PAIRS @ 300 (DOWELS FOR WALKWAY SLAB @ N & S SIDE OF BRIDGE DECK)

11 ROWS OF 1-D2501G + 1-D2502G (ALT.) @ 300 BOT. (REBAR TO BE INSTALLED THRU GIRDER WEB HOLES)

11 ROWS x 9 OF D2001G @ 300 (STIRRUPS BETWEEN GIRDER SPACING)

11-D2002G @ 300 (STIRRUPS @ N & S SIDE OF BRIDGE DECK)

11 - D2003G-2 + 11-D2004G IN PAIRS @ 300 (DOWELS FOR WALKWAY SLAB @ N & S SIDE OF BRIDGE DECK)

7 LINES OF 1-D2013G + 2-D2014G (ALT.) (3-TOP & 2 EA. FACE) @ N & S SIDE OF BRIDGE DECK SEE SECTION 'A' ON SHEET 040 FOR SPACING

ALL REINFORCING CHANGED TO GALVANIZED REINFORCING STEEL

NOTES:
1. FOR GIRDER WEB HOLES LOCATION TO ACCOMMODATE BOTTOM TRANSVERSE REINFORCEMENT REFER TO GIRDER DRAWING SHEET 030.

DECK TOP AND BOTTOM REINFORCING PLAN - SPAN 3
SCALE 1:30

NOTE:
MAINTAIN STAGGERED SPICING AT TOP AND BOTTOM THROUGHOUT REBAR INSTALLATION

APEGM
Certificate of Authorization
Dillon Consulting Limited (MB)
No. 1789 Date: 2017/01/09

NO.	REVISIONS	DATE	BY	DATE
2	ADDENDUM #4	17/02/24	RE	
1	ADDENDUM #1	17/01/25	RE	
0	ISSUED FOR TENDER	17/01/09	RE	

DESIGNED BY	RE	CHECKED BY	SSR
DRAWN BY	NBG/CCG	APPROVED BY	DBW
HOR. SCALE	AS SHOWN	RELEASED FOR CONSTRUCTION	
VERTICAL	AS SHOWN		

ENGINEER'S SEAL
PROVINCE OF MANITOBA
R.B. ERIC
Member 22665
REGISTERED PROFESSIONAL ENGINEER
CONSULTANT PROJECT NUMBER
16-3353

THE CITY OF WINNIPEG
PUBLIC WORKS DEPARTMENT
Waverley Street Underpass at CN Mile 3.89 Rivers Sub
Contract 2: Underpass Structure, Railworks, Roadworks, Land Drainage Sewer, Pumping Station and Landscaping Works
DECK SLAB REINFORCING PLAN
SPAN 3
CITY DRAWING NUMBER
U-239-2016-C2-CS-039
SHEET **039** OF **085**
CONSULTANT DRAWING NUMBER
C2-CS-039