

WARNING

IF POWER EQUIPMENT OR EXPLOSIVES ARE TO BE USED FOR EXCAVATION ON THIS PROJECT THE CONTRACTOR MUST:

1. NOTIFY THE GAS COMPANY OF THE PROPOSED LOCATION OF EXCAVATION.
2. TAKE PRECAUTION TO AVOID DAMAGE TO GAS COMPANY INSTALLATIONS SEE PROVINCIAL REGULATION 210/72 FOR DETAILS.
3. OBTAIN EXCAVATION PERMITS PRIOR TO CONSTRUCTION.

EXISTING STORM WATER RETENTION BASIN
 SRB 6-22:
 NWL - 229.82
 HWL - 231.04

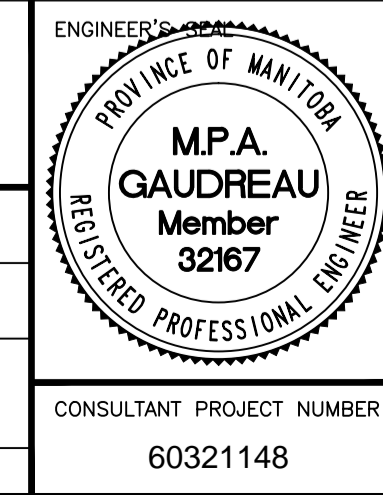
NOTE: REFER TO LDS STRUCTURE & LOCATION SCHEDULE ON DRAWING C2-CU-036 FOR FURTHER CATCHBASIN, CATCHPIT, DITCH INLET & MANHOLE INFORMATION

PA:60321148;900-Work\9100-DD CAD\200-SHEETS\Municipal\63353-C2-CON-CU-Taylor-001.dwg
 TOWERS REALTY GROUP
 24-7 INTOUCH CONTACT CENTERS
 ALBRECHTSEN HEALTH & FITNESS

150 WM	150 WM	150 WM	150 WM	150 WM	150 WM	150 WM	150 WM
HYDRANT	VALVE	LAND DRAINAGE SEWER	WASTE WATER SEWER	SEWER SERVICE PIPE	DRAINAGE CONNECTION PIPE	MANHOLE	CATCH BASIN
HYDRANT	VALVE	LAND DRAINAGE SEWER	WASTE WATER SEWER	PAVEMENT CROWN	N/W PROPERTY LINE	S/E PROPERTY LINE	N/W GUTTER
HYDRANT	VALVE	LAND DRAINAGE SEWER	WASTE WATER SEWER	PAVEMENT CROWN	N/W PROPERTY LINE	S/E PROPERTY LINE	N/W GUTTER
HYDRANT	VALVE	LAND DRAINAGE SEWER	WASTE WATER SEWER	PAVEMENT CROWN	N/W PROPERTY LINE	S/E PROPERTY LINE	N/W GUTTER
HYDRANT	VALVE	LAND DRAINAGE SEWER	WASTE WATER SEWER	PAVEMENT CROWN	N/W PROPERTY LINE	S/E PROPERTY LINE	N/W GUTTER
HYDRANT	VALVE	LAND DRAINAGE SEWER	WASTE WATER SEWER	PAVEMENT CROWN	N/W PROPERTY LINE	S/E PROPERTY LINE	N/W GUTTER
HYDRANT	VALVE	LAND DRAINAGE SEWER	WASTE WATER SEWER	PAVEMENT CROWN	N/W PROPERTY LINE	S/E PROPERTY LINE	N/W GUTTER
HYDRANT	VALVE	LAND DRAINAGE SEWER	WASTE WATER SEWER	PAVEMENT CROWN	N/W PROPERTY LINE	S/E PROPERTY LINE	N/W GUTTER
HYDRANT	VALVE	LAND DRAINAGE SEWER	WASTE WATER SEWER	PAVEMENT CROWN	N/W PROPERTY LINE	S/E PROPERTY LINE	N/W GUTTER
HYDRANT	VALVE	LAND DRAINAGE SEWER	WASTE WATER SEWER	PAVEMENT CROWN	N/W PROPERTY LINE	S/E PROPERTY LINE	N/W GUTTER

UNDERGROUND STRUCTURES	B.M. ELEV.
SUPV. U/G STRUCTURES	DATE
1 ISSUED FOR ADDENDUM 4	17/02/21
0 ISSUED FOR TENDER	17/01/09
NO. REVISIONS	DATE BY DATE

AECOM	
DESIGNED BY: MPG	CHECKED BY:
DRAWN BY: KLC	APPROVED BY:
HOR. SCALE: 1:500	RELEASED FOR CONSTRUCTION:
VERTICAL: 1:100	DATE:
CONSULTANT PROJECT NUMBER: 60321148	



METRIC
 WHOLE NUMBERS INDICATE MILLIMETRES
 DECIMALIZED NUMBERS INDICATE METRES



THE CITY OF WINNIPEG PUBLIC WORKS DEPARTMENT

Waverley Street Underpass at CN Mile 3.89 Rivers Sub
 Contract 2: Underpass Structure, Railworks, Roadworks, Land Drainage Sewer, Pumping Station and Landscaping Works

CITY DRAWING NUMBER: U239-2016-C2-CU-018
 SHEET 18 OF 41
 CONSULTANT DRAWING NUMBER: C2-CU-018

TAYLOR AVENUE - PLAN/PROFILE
 LDS
 STA 2+180 TO STA 2+560