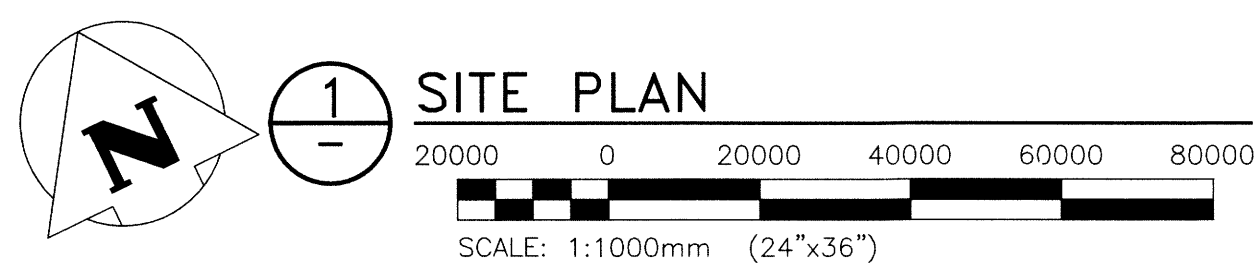
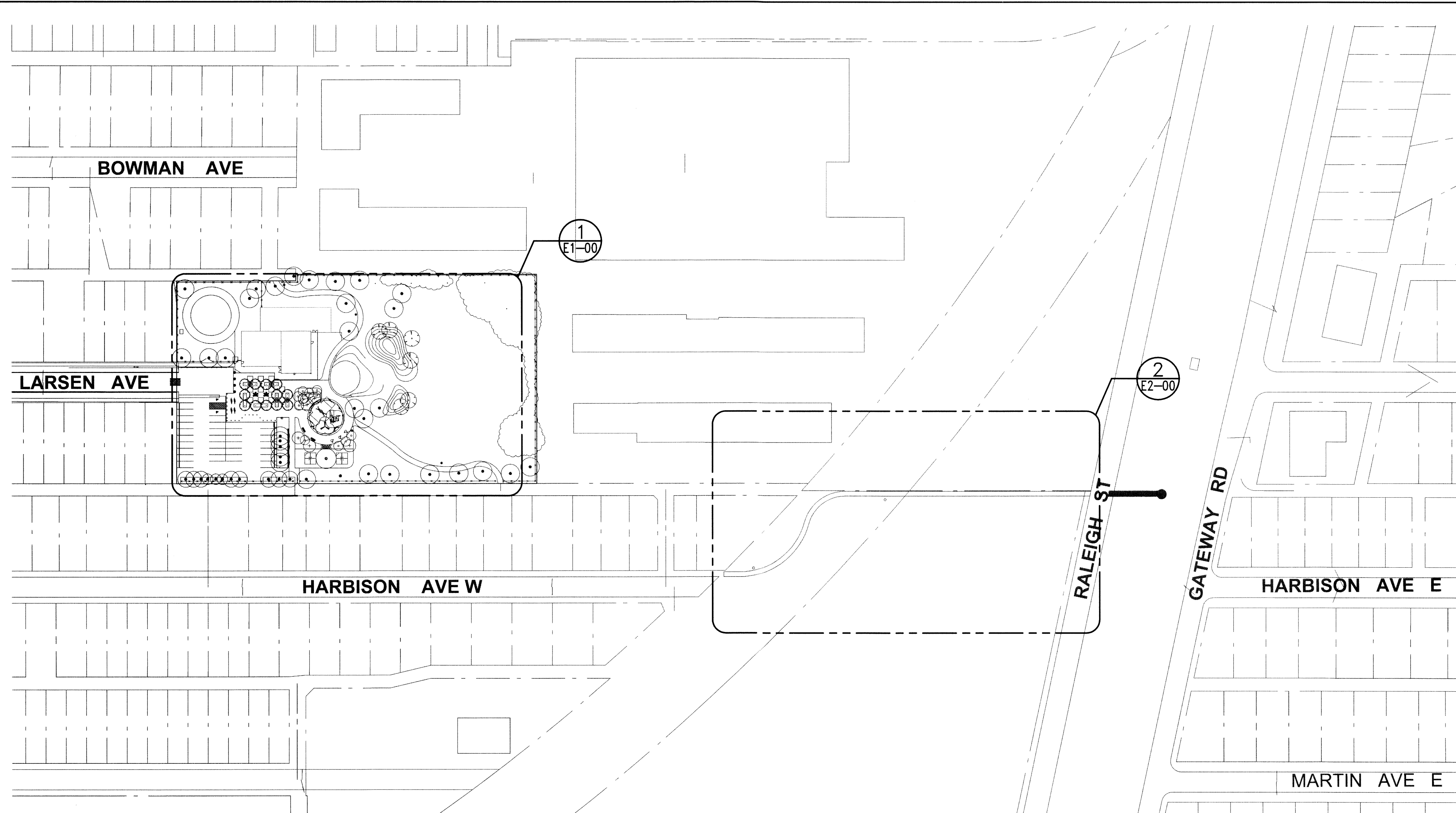


Filepath: F:\Projects\2016\16-0109-003\DWG\Elec\16-0109-003_E0-00.dwg - Tab: E0-00 Plotted By: deroche 16/06/24 [Fri 8:18am]
 24x36 / PLOT SCALE



LUMINAIRE SCHEDULE					
TYPE	DESCRIPTION	VOLTAGE	LAMPS	MANUFACTURER	
P	ARCHITECTURAL AREA LED LUMINAIRE WITH MATCHING 16' ARCHITECTURAL POLE	120V	58W LED 3300°K	FIXTURE POLE	LUMENPULSE: P500T-LE2-58L-120-A11-WW HAPCO: RTA16C5A4-01
S	AREA LED LUMINAIRE WITH 16' POLE AND HOUSE-SIDE SHIELD	120V	35W LED 3000°K	FIXTURE POLE	DSX0-LED-20C-530-30K-T2M-MVOLT-SPA-HS-DOBXD HAPCO: S5A16D5-4-BM
E	EXISTING FIXTURE	120V			

DRAWING LIST	
DWG. No.	DESCRIPTION
E0-00	SITE PLAN
E1-00	SITE LIGHTING - SHEET 1
E2-00	SITE LIGHTING - SHEET 2
E3-00	DETAILS
E4-00	SPECIFICATIONS

DRAWING QUANTITY = 5

HYDRO NOTES

- THE ELECTRICAL CONTRACTOR SHALL BE RESPONSIBLE FOR COORDINATING THE FOLLOWING WITH THE LOCAL MB HYDRO OFFICE:
- APPROVAL OF ANY CHANGES TO THE UNDERGROUND CONDUIT ROUTE PRIOR TO INSTALLATION.
 - MB HYDRO INSPECTION AND APPROVAL OF ALL UNDERGROUND CONDUIT, TRANSFORMER PAD INSTALLATION, CSTE PLACEMENT, ALL FIBERGLASS BASES AND PRIOR TO ANY BACK FILLING.
 - SUBMISSION OF THE CSTE ARRANGEMENT FOR SHOP DRAWING APPROVAL PRIOR TO PURCHASE AND INSTALLATION.
 - THE CONTRACTOR SHALL ARRANGE FOR MB HYDRO TO PROVIDE A NEW ELECTRICAL SERVICE UP TO THE NEW CSTE. THE CONTRACTOR SHALL ARRANGE PAYMENT FOR THE NEW HYDRO SERVICE THROUGH THE PROJECT CASH ALLOWANCE.
 - THE CSTE, METERING ENCLOSURE, MAIN BREAKER AND ALL CABLING FROM THE CSTE IS THE RESPONSIBILITY OF THE CONTRACTOR AND SHALL BE CARRIED UNDER THEIR BASE CONTRACT PRICE. A CONTINUOUS WIREWAY FROM THE LOCKABLE METERING ENCLOSURE TO THE CTS (WITHIN THE CSTE) MUST BE INSTALLED BY THE CONTRACTOR FOR MB HYDRO TO INSTALL THEIR METERING EQUIPMENT.
 - ALL CONSTRUCTION POWER SHALL BE ARRANGED AND PAID FOR BY THE CONTRACTOR FOR THE DURATION OF THE CONSTRUCTION.

SERVICING NOTES:

- EXACT LOCATION OF ALL HYDRO ENTRANCE ON SITE AND OFF TO BE CONFIRMED WITH MB HYDRO DIRECTLY BEFORE ANY INSTALLATION CAN PROCEED.
- CONTRACTOR TO OBTAIN APPROVED PERMITS FROM LOCAL GAS COMPANY AND CONTACT THEIR INSPECTION DEPARTMENT PRIOR TO UNDER TAKING ANY EXCAVATIONS. FAILURE TO DO SO MAY BE AN OFFENSE UNDER THE PROVINCIAL GAS ACT.
- EACH PROJECT WILL BE EVALUATED AT THE TIME OF DESIGN AS TO WHETHER CONCRETE ENCASEMENT WILL BE REQUIRED. CONTRACTOR TO CONFIRM EXACT REQUIREMENTS WITH MB HYDRO AND ADJUST TO SUIT. ALL COSTS TO BE INCLUDED IN BASE TENDER QUOTE

SERVICE GROUNDING NOTES:

- ALL HYDRO OWNED PAD MOUNTED GROUNDING IS PROVIDED BY MB HYDRO.
- ELECTRICAL CONTRACTOR SHALL PROVIDE A SYSTEM GROUND AS PER THE DRAWINGS AND THE CEC.
- ALL INSTALLATIONS AND FIXTURES CONTAINING SUBSURFACE CONDUCTIVE MATERIALS SUCH AS METALLIC FENCES, STREET BASES, REINFORCED CONCRETE WALLS AND SPRINKLER PIPES MUST BE KEPT A MINIMUM OF 2.5 METERS FROM THE NEAREST POINT OF THE MB HYDRO GRID AROUND THEIR PAD MOUNTED TRANSFORMER. ONLY INSTALLATIONS AND FIXTURES WHICH CAN BE INSULATED (SUCH AS FENCE POSTS) AND CONCRETE WALLS UTILIZING EPOXY COATED REBAR IS ALLOWED WITHIN THE 2.5 METER ZONE.
- ANY INSTALLATIONS AND FIXTURES CONTAINING ABOVE SURFACE CONDUCTIVE MATERIALS SUCH AS METALLIC FENCES, METAL CLAD BUILDINGS, REINFORCED CONCRETE WALLS, MAILBOXES MOUNTED ON REINFORCED CONCRETE PADS, MTS OR SHAW PEDESTALS, ETC. THAT ARE LOCATED WITHIN 2.0M OF THE PAD MOUNTS METAL ENCLOSURE MUST BE INSULATED SUCH THAT A PERSON CANNOT CONTACT IT AND THE PADMOUNTS ENCLOSURE SIMULTANEOUSLY.

GENERAL NOTES

- DEVICE SYMBOLS SHOWN ON THE DRAWINGS AS A "GREY" LINE WEIGHT DENOTES THAT THEY ARE EXISTING.
- ALL LUMINAIRES SHALL BE SUITABLE FOR THE ENVIRONMENT IN WHICH THEY ARE INSTALLED. EQUIPMENT MOUNTED OUTDOORS SHALL BE NEMA 3R. DEVICES MOUNTED IN DAMP OR WET LOCATIONS SHALL BE WEATHERPROOF.
- ALL LUGS, TERMINALS, ETC. IN ELECTRICAL DISTRIBUTION EQUIPMENT SHALL BE LISTED FOR A MINIMUM OF 75 DEGREES C CONDUCTORS. TERMINATIONS LISTED FOR ONLY 60 DEGREES C CONDUCTORS ARE NOT PERMITTED.

SYMBOL LEGEND

SYMBOL	DESCRIPTION
	POLE MOUNTED LUMINAIRE
	PHOTOCCELL
	UNDERGROUND CABLE
	PANEL BOARD

0	16/06/24	ISSUED FOR CONSTRUCTION	<i>CB</i>
NO.	YY/MM/DD	DESCRIPTION	DESIGN BY / DESIGN CHECK
REVISIONS / ISSUE			
CLIENT:			
SCATLIFF + MILLER + MURRAY visionary urban design + landscapes			
PROJECT:			
EAST END CULTURAL AND LEISURE CENTRE			
DWG. DESCRIPTION:			
ELECTRICAL SITE PLAN			
DESIGN BY:	JLL	DATE (YY/MM/DD):	16/06/20
DESIGN CHECK:	<i>CB</i>	DATE:	16/06/23
DRAWN BY:	RAH	DATE:	16/06/20
DWG CHECK:	<i>RAH</i>	DATE:	16/06/23
DWG. NO.:	16-0109-003	E0-00	0

APEGM
Certificate of Authorization
KGS Group
No. 245

KGS GROUP
CONSULTING ENGINEERS

AUTHENTICATION FOR CURRENT REVISION
ENG. STAMP
R. LALONDE
Member 32345
JUNE 24/2024