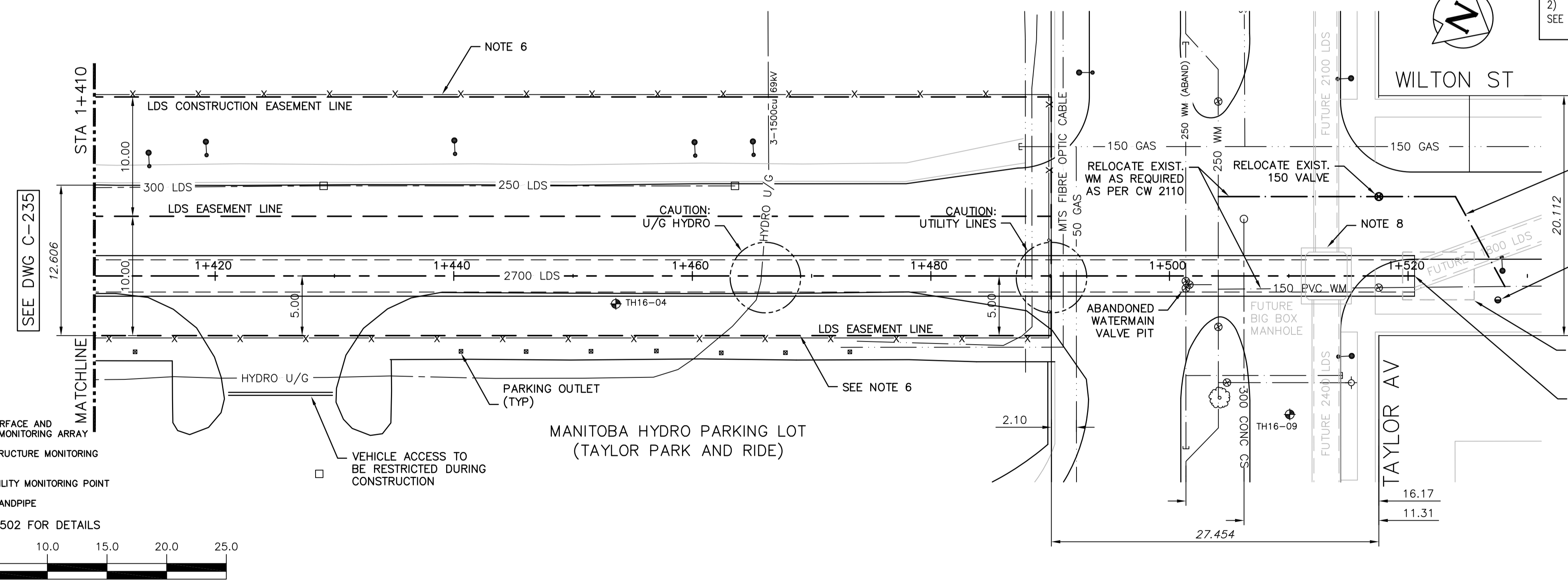


1+420 1+440 1+460 1+480 1+500 1+520

WARNING
 IF POWER EQUIPMENT OR EXPLOSIVES ARE TO BE USED FOR EXCAVATION ON THIS PROJECT THE CONTRACTOR MUST:
 1) NOTIFY THE GAS COMPANY OF THE PROPOSED LOCATION OF EXCAVATION.
 2) TAKE PRECAUTION TO AVOID DAMAGE TO GAS COMPANY INSTALLATIONS.
 SEE PROVINCIAL REGULATION 210/72 FOR DETAILS

PROPERTY LIMITS DELINEATION
 DELINEATION OF PROPERTY LIMITS AS SHOWN ON THIS DWG DOES NOT REPRESENT A "LEGAL SURVEY". CH2M HILL MAKES NO REPRESENTATION OR WARRANTY AS TO THE ACCURACY OF PROPERTY LIMITS DELINEATED ON THIS DRAWING, NOR ON THE DIMENSIONAL ACCURACY OF DRAWING FEATURES RELATIVE TO THOSE PROPERTY LIMITS.

- CONSTRUCTION NOTES:**
- SEWER AND WATER SERVICES SHOWN ON DRAWING ARE APPROXIMATE ONLY.
 - LOCATION OF ALL SEWER AND WATER LINES TO BE CONFIRMED IN FIELD.
 - INSTALL NEW SEWER BY TRENCHLESS METHODS, UNLESS OTHERWISE NOTED.
 - REFER TO SPECIFICATION FOR DETAILS OF TRAFFIC MANAGEMENT ON TAYLOR AVENUE.
 - CONTRACTOR'S TEMPORARY SHAFT TO HAVE A MIN. OF 1.0m OF PROPOSED 2700 LDS ENTER FROM SOUTH. SHORING TO BE DESIGNED FOR REUSE AS RECEIVING SHAFT FOR FUTURE 1800 LDS TO THE NORTH, AND REMAIN IN-PLACE UP TO 1.0m BELOW GROUND ELEVATION ALL AROUND. SHAFT TO BE FULLY BACKFILLED WITH CONTROLLED LOW STRENGTH MATERIAL (MAX. 1MPa). REINSTATEMENT OF ALL PAVEMENT AREAS TO BE TEMPORARY ASPHALT (50mm DEPTH) OVER CONTROLLED LOW STRENGTH MATERIAL. CONSTRUCTION FENCING TO REMAIN IN PLACE AROUND SHAFT AREA DURING CONSTRUCTION. FENCING TO BE REMOVED AFTER SHAFT BACKFILLED. LIMITS OF TEMPORARY SHAFT ARE SHOWN FOR ILLUSTRATIVE PURPOSES ONLY.
 - INSTALL AND MAINTAIN TEMPORARY CONSTRUCTION FENCING ALONG ALL LDS CONSTRUCTION EASEMENT LINES.
 - PROPOSED STANDPIPE LOCATION TO BE DETERMINED ON SITE BY THE CONTRACTOR PRIOR TO CONSTRUCTION COMMENCEMENT. REFER TO SPECIFICATION FOR DETAILS.
 - FUTURE CONNECTION PIPE WORK AND MANHOLE SHOWN FOR ILLUSTRATION PURPOSES ONLY.
 - FINAL WATERMAIN RELOCATION ALIGNMENT TO BE DETERMINED BY THE CONTRACT ADMINISTRATOR IN THE FIELD ONCE CONTRACTOR'S SHAFT LAYOUT IS FINALIZED.



- LEGEND**
- PROPOSED SURFACE AND SUBSURFACE MONITORING ARRAY
 - PROPOSED STRUCTURE MONITORING POINT
 - PROPOSED UTILITY MONITORING POINT
 - PROPOSED STANDPIPE
- SEE DWG C-502 FOR DETAILS

EXISTING	LEGEND-PLAN	PROPOSED	EXISTING	LEGEND-PLAN	PROPOSED	EXISTING	LEGEND-PROFILE	PROPOSED
150 WM	WATER MAIN	150 WM	HYDRO	M.T.S.	150 WM	WATER MAIN	150 WM	HYDRANT, VALVE
300 LDS	LAND DRAINAGE SEWER	300 LDS	CONCRETE	ASPHALT	300 LDS	LAND DRAINAGE SEWER	300 LDS	LAND DRAINAGE SEWER
250 WWS	WASTE WATER SEWER	250 WWS	SIDEWALK	PLANNING	250 WWS	WASTE WATER SEWER	250 WWS	WASTE WATER SEWER
MANHOLE	MANHOLE	MANHOLE	PROPERTY LINE	SURVEY BAR	MANHOLE	NORTH/WEST GUTTER	MANHOLE	SOUTH/EAST GUTTER
CATCH BASIN	CATCH BASIN	CATCH BASIN	GAS	CURB STOP	CATCH BASIN	N/W, S/E R'S	CATCH BASIN	N/W, S/E R'S
CURB INLET	CURB INLET	CURB INLET	TEE	TEE	CURB INLET		TEE	TEE
BEND	BEND	BEND			BEND			
REDUCER	REDUCER	REDUCER			REDUCER			

LOCATION APPROVED UNDERGROUND STRUCTURES

SUPV. U/G STRUCTURES COMMITTEE DATE

NOTE:
 LOCATION OF UNDERGROUND STRUCTURES AS SHOWN ARE BASED ON THE BEST INFORMATION AVAILABLE BUT NO GUARANTEE IS GIVEN THAT ALL EXISTING UTILITIES ARE SHOWN OR THAT THE GIVEN LOCATIONS ARE EXACT. CONFIRMATION OF EXISTENCE AND EXACT LOCATION OF ALL SERVICES MUST BE OBTAINED FROM THE INDIVIDUAL UTILITIES BEFORE PROCEEDING WITH CONSTRUCTION.

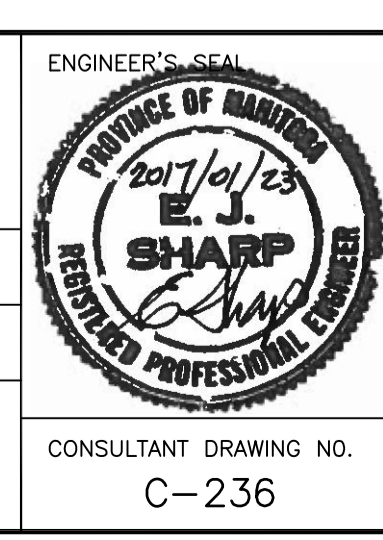
KGS GROUP CONSULTING ENGINEERS

ch2m

DESIGNED BY: SDG
 CHECKED BY: MD
 DRAWN BY: JBC
 APPROVED BY:

HOR. SCALE: 1:250
 VERTICAL: 1:50

RELEASED FOR CONSTRUCTION: K. ZUREK
 DATE: JANUARY 5, 2017



THE CITY OF WINNIPEG WATER AND WASTE DEPARTMENT

PROJECT TITLE: COCKBURN AND CALROSSIE COMBINED SEWER RELIEF WORKS - CONTRACT 4

WILTON STREET FROM STA 1+410 TO MH 32

SHEET OF 10 OF 12
 COMPUTER FILE NAME: C-236.dwg
 CITY DRAWING NUMBER: LD-7896

File name: C:\pwworkdir\ch2mhill_wbg\jortez\140204776\