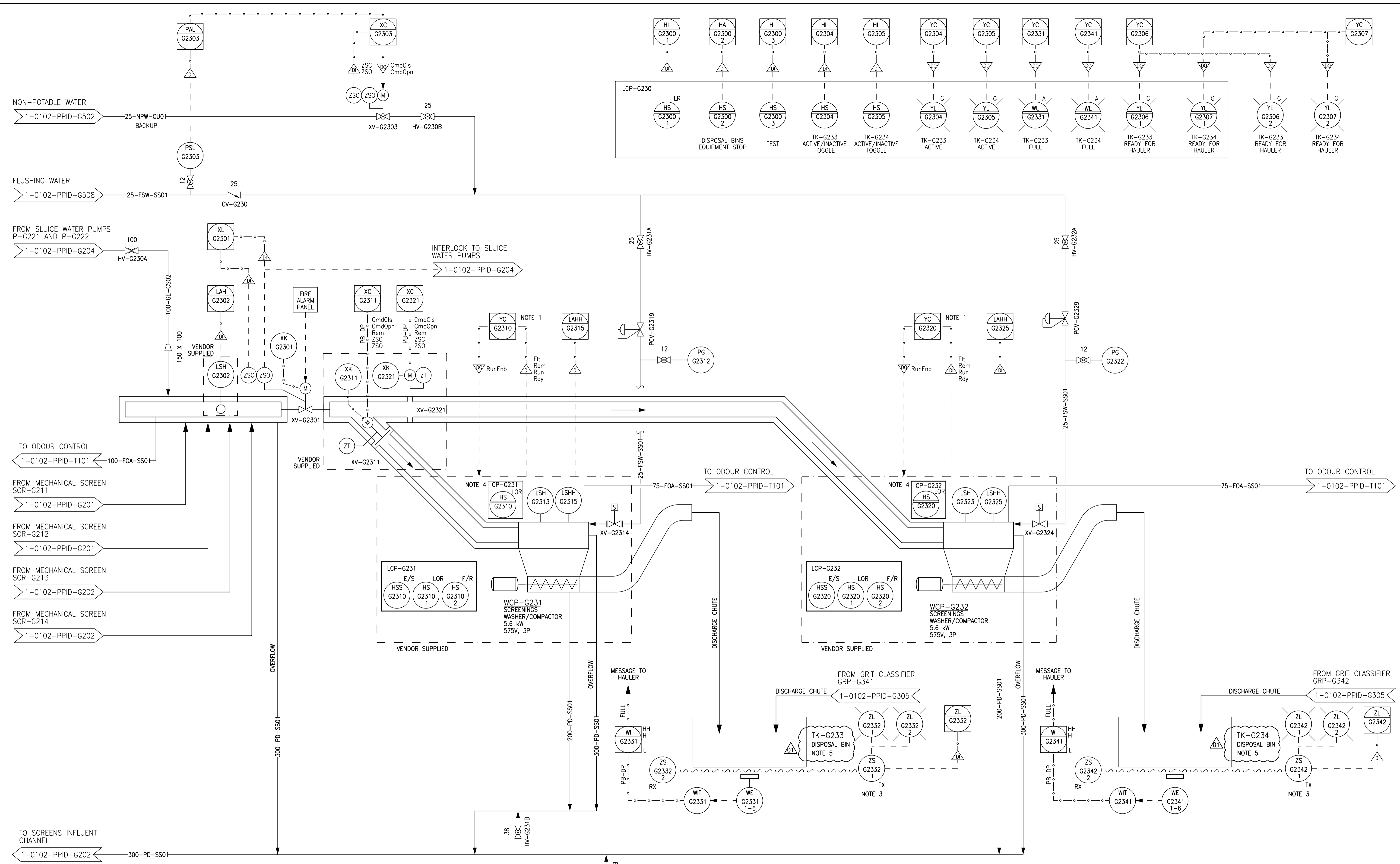


A1 SIZE - 594mm x 841mm

©CH2M HILL 2017. ALL RIGHTS RESERVED.



- NOTES**
- ADDITIONAL MONITORING POINTS ARE AVAILABLE ON THE HMI VIA THE CONTROL SYSTEM NETWORK.
  - INSTRUMENTS SHOWN IN AN AUXILIARY LOCATION ARE LOCATED IN CORRESPONDING WASHER COMPACTOR PANEL UNLESS OTHERWISE NOTED.
  - IR SENSOR USED TO INDICATE TO TRUCK DRIVERS THAT BIN IS IN CORRECT POSITION.
  - ADDITIONAL STATUS INDICATION IS AVAILABLE AT THIS PANEL.
  - DISPOSAL BINS TK-G233 AND TK-G234 SUPPLIED BY OTHERS.

**APEGM**  
 Certificate of Authorization  
 CH2M HILL Canada Ltd.  
 No. 1441

NO.	REVISIONS	DATE	DESIGN	CHECK
01	ISSUED FOR ADDENDUM 2 - 976-2016	2017/06/09	JBC	
00	ISSUED FOR CONSTRUCTION - 976-2016	2017/04/05	E.F.B.	

**CH2MHILL**  
 SNC-LAVALIN  
 DESIGNED BY: B. EDGAR  
 CHECKED BY: F. ABSI  
 DRAWN BY: A. CLARKE  
 APPROVED BY: H.T. FREIHAMMER  
 SCALE: NTS  
 ISSUED FOR CONSTRUCTION BY: J. SHUMKA  
 DATE: 2017/04/05  
 DATE: 2017/04/05  
 CONSULTANT NO.: 474248

ENGINEER'S SEAL  
 F. J. ABSI  
 MEMBER 36875  
 REGISTERED PROFESSIONAL ENGINEER

**THE CITY OF WINNIPEG**  
 WATER AND WASTE DEPARTMENT  
 SOUTH END WATER POLLUTION CONTROL CENTRE  
 SEWPC UPGRADING/EXPANSION PROJECT  
 PROCESS AND INSTRUMENTATION DIAGRAM  
 SCREENINGS WASHERS/ COMPACTORS  
 WCP-G231 AND WCP-G232 AND DISPOSAL BINS  
 CITY DRAWING NUMBER: 1-0102-PPID-G203  
 SHEET: 001  
 REV: 01  
 SIZE: A1