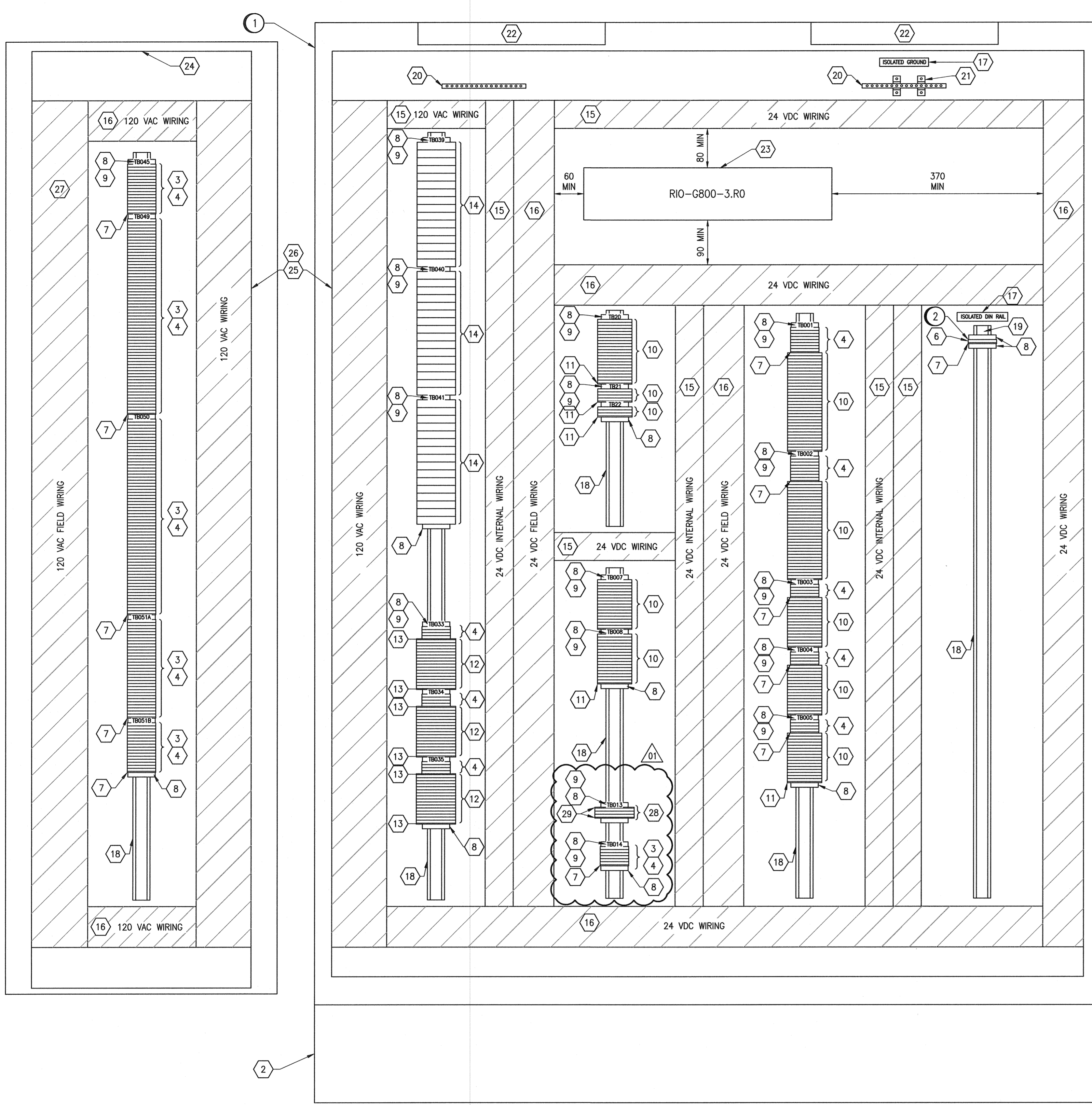


A1 SIZE - 594mm x 841mm

LAST SAVE: 2017/06/21 - 11:42am  
 PATH: C:\pwworkdir\ch2mhill\wg\0356208\1-0102-ACBD-G026-002.dwg

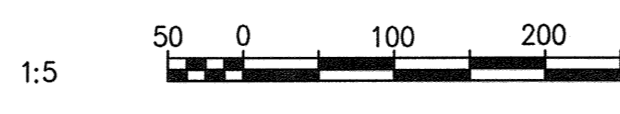


**SIDE PANEL VIEW**  
1 : 5

**INTERIOR PANEL VIEW**  
1 : 5

**SPECIFIC NOTES:**

- ① PROVIDE MODULAR CABINET ACCESSORIES AND FRAME JOINING KITS AS REQUIRED FOR A COMPLETE INSTALLATION. PROVIDE BARRIER PANELS BETWEEN JOINED OR GANGED ENCLOSURES. PROVIDE SOLID SIDES TO CLOSE OPEN SIDES OF ENCLOSURE.
- ② CONNECT ISOLATED DIN RAIL TO ISOLATED GROUND BAR.



BILL OF MATERIAL				
ITEM	QTY	DESCRIPTION	MANUFACTURER	CATALOG NUMBER
1	1	TYPE 12 MODULAR ENCLOSURE WITH SUB-PANEL - 2000x1600x600mm WITH LARGE DATA POCKET	HOFFMAN	PP20166 ADP2
2	1	200mm PLINTH BASE FOR ITEM 1	HOFFMAN	PPB2166
3	AS REQ'D	FUSED TERMINAL - UT 4 WITH FUSE PLUG - P-FU 5X20	PHOENIX CONTACT	3046142 3036806
4	AS-REQ'D	FEED-THROUGH TERMINAL - UT 4-MTD	PHOENIX CONTACT	3046184
5	-	KNIFE DISCONNECT TERMINAL - UT 4-MT	PHOENIX CONTACT	3046139
6	AS REQ'D	POTENTIAL-EARTH TERMINAL - UT 4-MTD-PE/S	PHOENIX CONTACT	3046207
7	AS REQ'D	TERMINAL END PLATE - D-UT 2,5/4 TWIN	PHOENIX CONTACT	3047141
8	AS REQ'D	TERMINAL END CLAMP - CLIFFIX 35	PHOENIX CONTACT	3022218
9	AS REQ'D	TERMINAL BLOCK MARKER - KLM-A	PHOENIX CONTACT	1004348
10	AS REQ'D	DOUBLE LEVEL FUSED TERMINAL - UTTB 4 WITH FUSE PLUG-P-FU 5X20	PHOENIX CONTACT	3044720 3036806
11	AS REQ'D	DOUBLE LEVEL TERMINAL END PLATE - D-UTTB 2,5/4	PHOENIX CONTACT	3047293
12	AS REQ'D	RELAY MODULE, 120 VAC, 1PDT, FOR PLC INPUT	PHOENIX CONTACT	2966281
13	AS REQ'D	RELAY MODULE SEPARATING PLATE	PHOENIX CONTACT	2966841
14	AS REQ'D	48 SERIES - RELAY INTERFACE MODULE, 1 POLE, 16A	FINDER	48.61.7.024.0050
15	AS REQ'D	NARROW SLOT WIRING DUCT AND COVER, 2.25"x3.12"	PANDUIT	F2X3LG6
16	AS REQ'D	NARROW SLOT WIRING DUCT AND COVER, 3.25"x3.12"	PANDUIT	F3X3LG6
17	AS REQ'D	LAMACOIDS	-	-
18	AS REQ'D	35mm DIN RAIL	PHOENIX CONTACT	0801733
19	AS REQ'D	DIN RAIL INSULATED SUPPORT BRACKET	PHOENIX CONTACT	1201141
20	2	GROUND BAR, 14 TAPS	ILSCO	D167-14
21	2	GROUND BAR ISOLATION STAND OFF	PANDUIT	UGB-IN-SO
22	2	LED PANEL LIGHT AND DOOR SWITCH	HOFFMAN	LED24V15 ALFSWD
23	1	X80 RIO RACK - AS PER DETAIL A	SCHNEIDER	-
24	1	PROLINE SIDE PANEL	HOFFMAN	PPFSM206
25	AS REQ'D	CORNER TYPE WIRING DUCT 3.10" HEIGHT	PANDUIT	CWD3LG6
26	AS REQ'D	4" HEIGHT SLOTTED DIVIDER WALL	PANDUIT	SD4H6
27	AS REQ'D	NARROW SLOT WIRING DUCT AND COVER, 4.25"x3.12"	PANDUIT	F4X3LG6
28	AS REQ'D	RELAY MODULE, 24 VDC, 1PDT, FOR PLC OUTPUT	PHOENIX CONTACT	2966278
29	AS REQ'D	RELAY MODULE SEPARATING PLATE	PHOENIX CONTACT	2966841

**GENERAL NOTES:**

- 1. ALL POWER AND 120 VAC WIRING TO BE TEW/MTW 300V, 105°C INSULATION, STRANDED COPPER, 12 AWG OR LARGER WHERE CURRENT REQUIREMENTS DICTATE AS PER CEC REQUIREMENTS.
- 2. ALL 24 VDC CONTROL WIRING TO BE TEW/MTW 300V, 105°C INSULATION, STRANDED COPPER, 16 AWG.
- 3. ALL ANALOG WIRING TO BE 18 AWG SHIELDED TWISTED PAIR, WITH INSULATION RATED AT 300V.
- 4. COMPONENTS ARE TO BE LABELED AS SHOWN ON THE DRAWINGS.
- 5. TEST ALL WIRING AND COMPONENTS FOR FUNCTIONAL OPERATION, CORRECT CONNECTION, CONTINUITY AND INSULATION INTEGRITY. DOCUMENT ALL TEST RESULTS.
- 6. ALL MAJOR COMPONENTS INSIDE THE PANEL ARE TO BE LABELED WITH LAMACOIDS IN ACCORDANCE WITH MAJOR DESCRIPTIONS ON THE DRAWINGS.
- 7. PROVIDE WIRE BARREL FERRULES FOR WIRING WHERE POSSIBLE.
- 8. ALL TERMINAL BLOCKS SHALL BE NUMBERED AS SHOWN IN THE DRAWINGS, COMPLETE WITH GROUP LABELING.
- 9. ALL WIRES SHALL BE MARKED AS INDICATED ON THE DRAWINGS.
- 10. ROUTE ALL 24 VDC WIRING SEPARATE FROM 120 VAC WIRING.
- 11. JUMPER BARS SHALL BE USED INSTEAD OF WIRE JUMPERS WHERE POSSIBLE.

RIO-G800-3.R0  
 RACK: BME XBP 1200

PS	0	1	2	3	4	5	6	7	8	9	10	11	
BMX CFS 3020													
BME CFA 312 10													
BMX DDI 3202K													
BMX DDI 3202K													
BMX DDI 3202K													
BMX DDI 3202K													
BMX DDI 3202K													
SPACE (BMX XEM 010)													
BMX DDO 1602													
BMX DDO 1602													
BMX DDO 1602													
BMX DDO 1602													
BMX DDO 1602													
SPACE													

**CONNECTOR LEGEND:**

- ① BMX FCW 303 40-WAY CONNECTOR WITH FLYING LEADS
- ② BMX FTB 2010 SCREW CLAMP TERMINAL BLOCK

**DETAIL - RIO RACK CONFIGURATION**  
NTS

1-0102-EGAD-G002	POWER LAYOUT, GRIT/SCREENING ELECTRICAL ROOM
REFERENCE DRAWINGS	DESCRIPTION

01	ISSUED FOR ADDENDUM 3 - 976-2016	2017/06/23	TMC	PC
00	ISSUED FOR CONSTRUCTION - 976-2016	2017/04/05	MW	PC
NO.	REVISIONS	DATE	DESIGN	CHECK

**CH2MHILL.**  
 SNC-Lavalin  
 DESIGNED BY: M. WANG  
 CHECKED BY: P. CHICATUN  
 DRAWN BY: M. WANG  
 APPROVED BY: E. RYCZKOWSKI  
 SCALE: AS SHOWN  
 ISSUED FOR CONSTRUCTION BY: J. SHUMKA  
 DATE: 2015/07/24  
 DATE: 2017/04/05  
 CONSULTANT NO.: 474248

ENGINEER'S SEAL  
**PROVINCE OF MANITOBA**  
**REGISTERED PROFESSIONAL ENGINEER**  
**CHICATUN**  
**Member 30307**  
 JUN 21 2017  
 REV. 01

**THE CITY OF WINNIPEG**  
 WATER AND WASTE DEPARTMENT  
 SOUTH END WATER POLLUTION CONTROL CENTRE  
 SEWPPC UPGRADING/EXPANSION PROJECT  
 AUTOMATION - CABINET LAYOUT  
 HEADWORKS AREA  
 CP-G823, PROCESS RIO CABINET - RIO-G800-3  
 CITY DRAWING NUMBER: 1-0102-ACBD-G026-002  
 SHEET: 002  
 REV.: 01  
 SIZE: A1